



CASF High Density Eligible Areas 2020 CASF Workshop

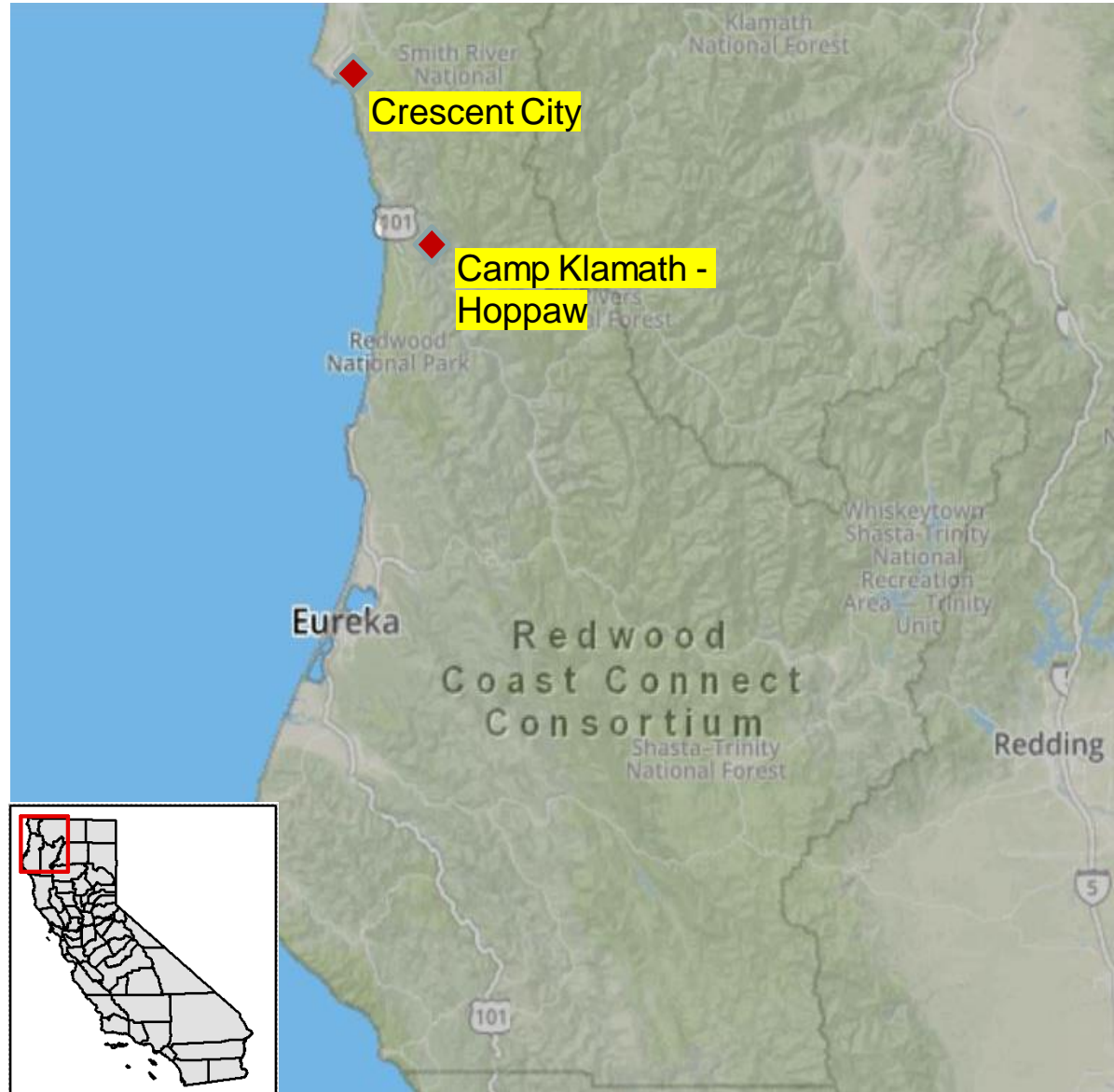


CASF Public Workshop
Carlos Jennings, GIS Analyst, Communications Division
April 23, 2020



Redwood Coast Connect Consortium

Crescent City
Camp Clamath – Hoppaw





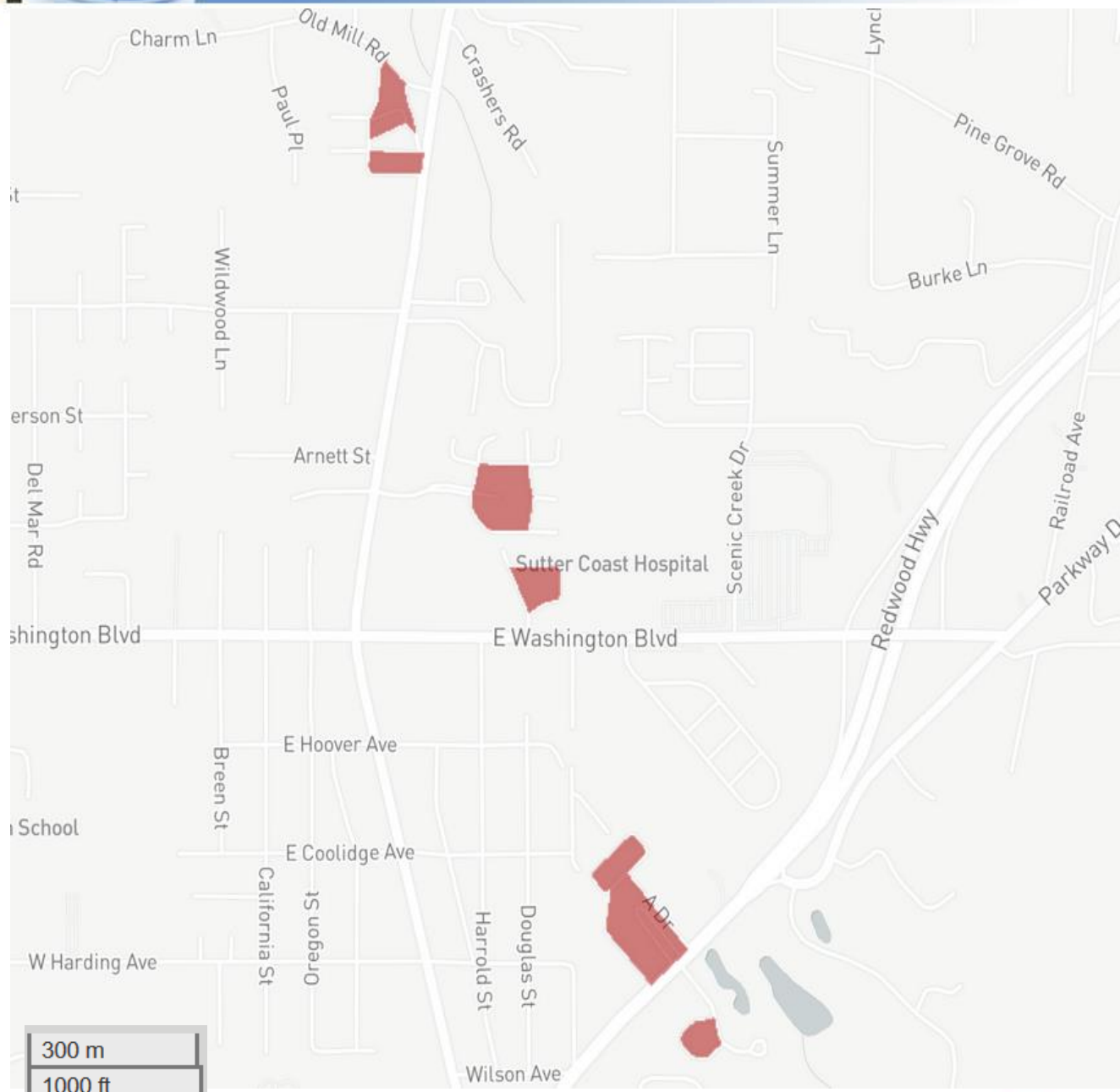
Redwood Coast Connect Consortium

Crescent City Del Norte County

Unserviced Households – 126
 Population – 256
 Median Household Income – \$40,368

Density of Eligible Housing Units per Sq.Mi.

- 1 - 5
- 5 - 10
- 10 - 50
- 50 - 150
- 150 - 300
- 300 or Greater





Redwood Coast Connect Consortium

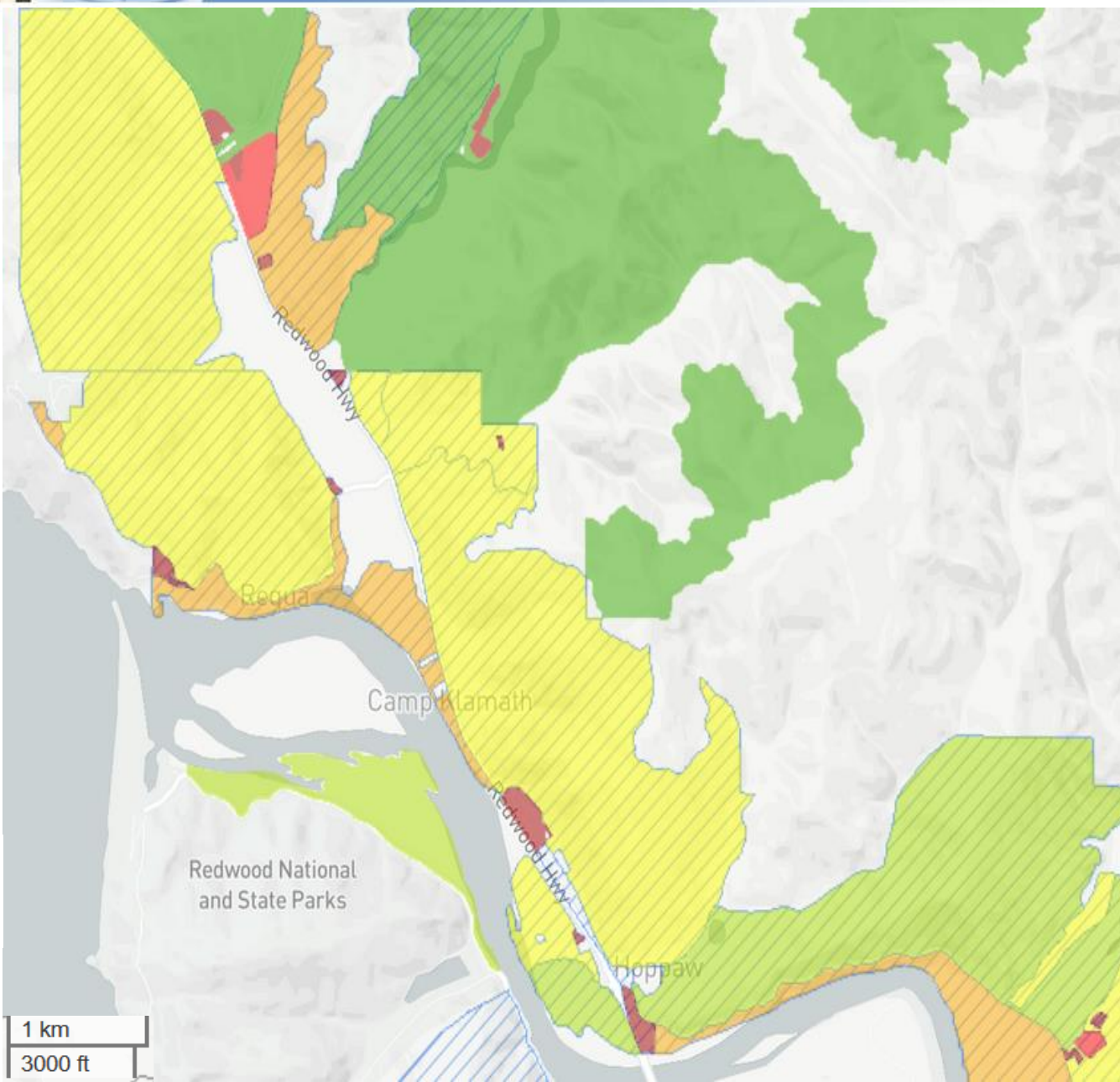
Camp Klamath - Hoppaw Del Norte County

Unserved Households – 503
 Population – 1,216
 Median Household Income - \$32,232
 CAFII Provider - *Frontier*

Density of Eligible Housing Units per Sq.Mi.

- 1 - 5
- 5 - 10
- 10 - 50
- 50 - 150
- 150 - 300
- 300 or Greater

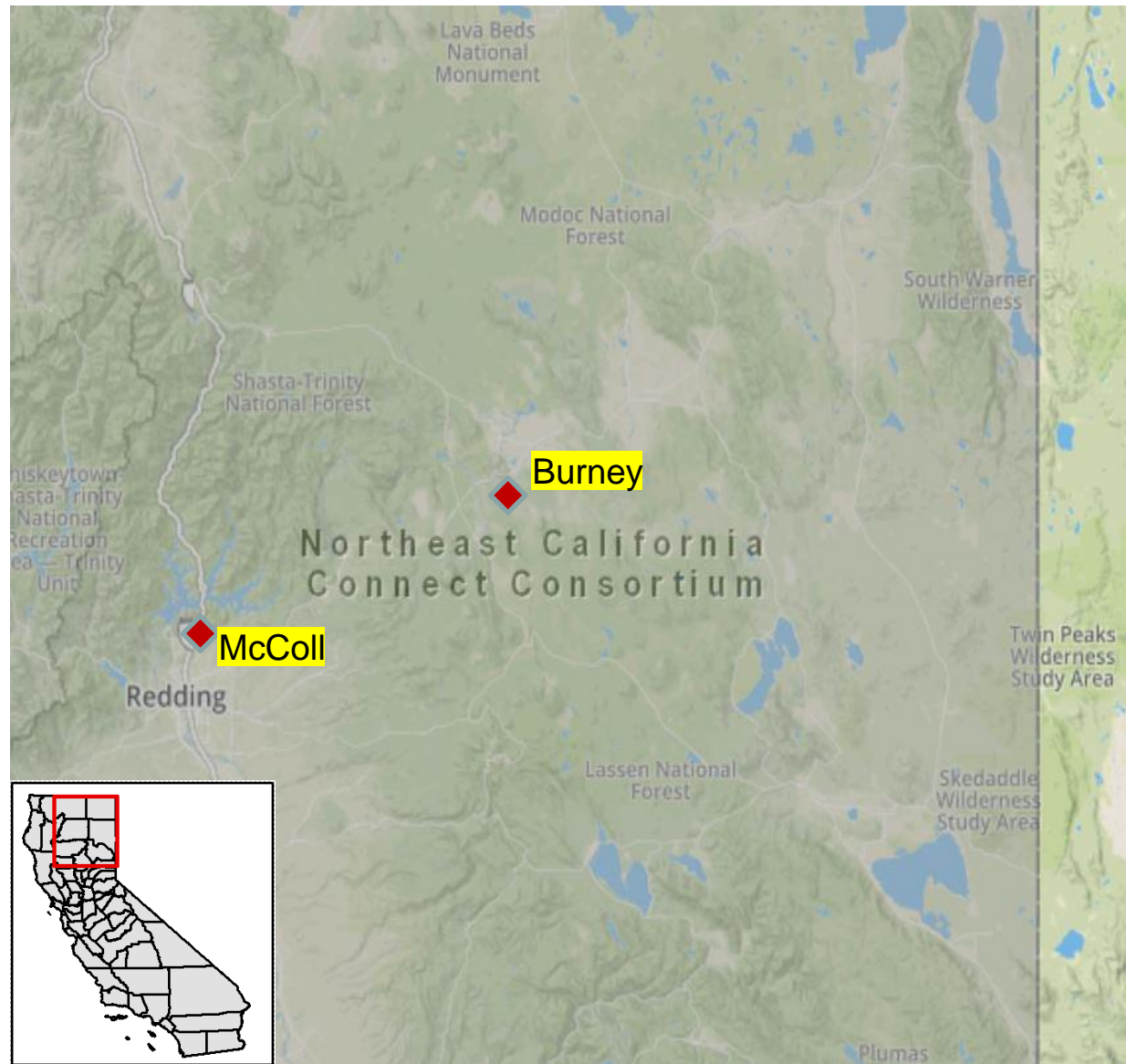
- CAFII CAM43 Supported Locations
- CAFII Auction 903 Results
- CASF Approved Last Mile Projects





Northeast California Connect Consortium

Burney
McColl

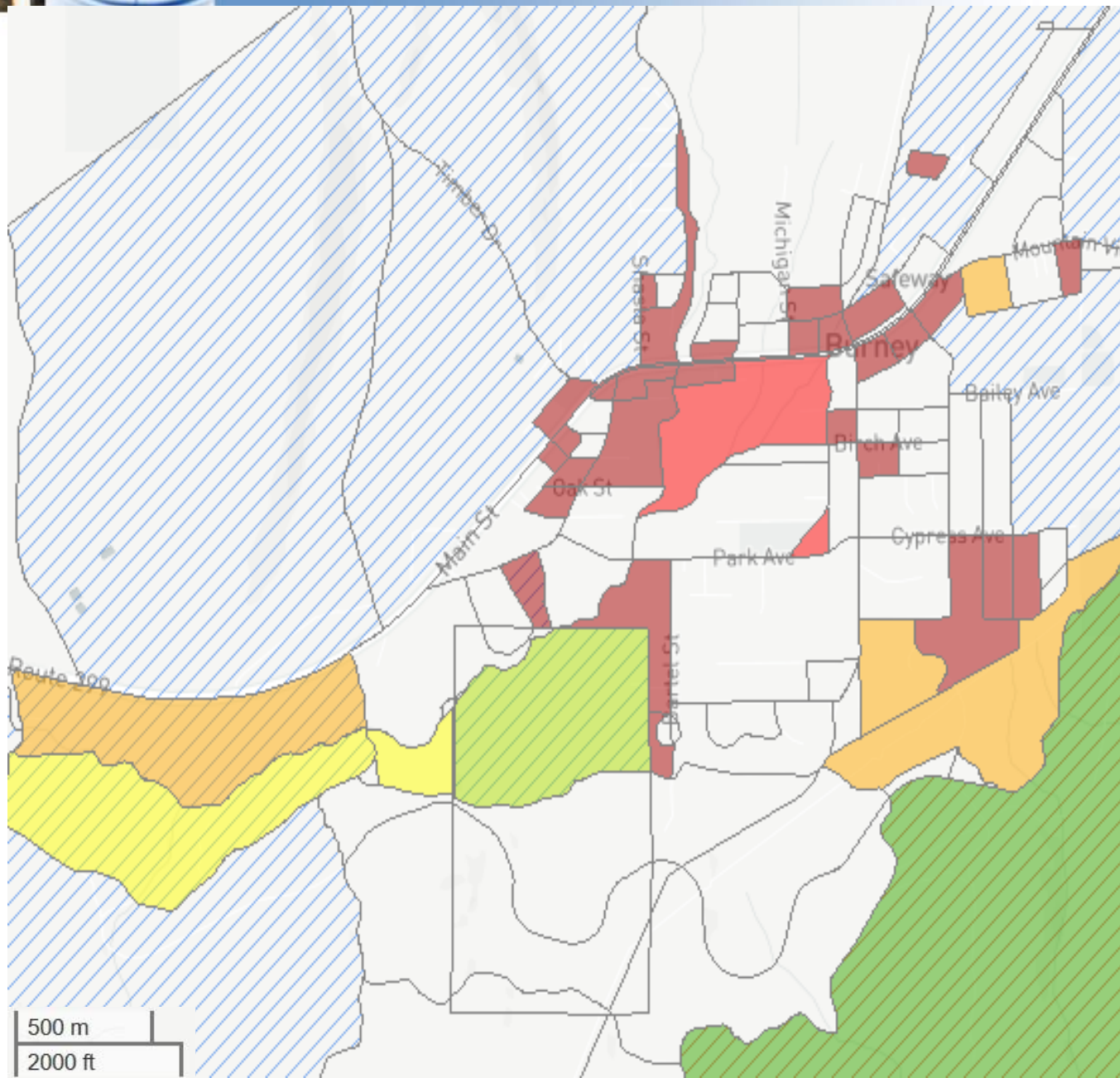




Northeast California Connect Consortium

Burney Shasta County

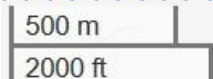
Unserved Households – 273
 Population – 816
 Median Household Income - \$16,086
 CAFII Provider - *Frontier*



Density of Eligible Housing Units per Sq.Mi.

- 1 - 5
- 5 - 10
- 10 - 50
- 50 - 150
- 150 - 300
- 300 or Greater

- CAFII CAM43 Supported Locations
- CAFII Auction 903 Results
- CASF Approved Last Mile Projects





Northeast California Connect Consortium

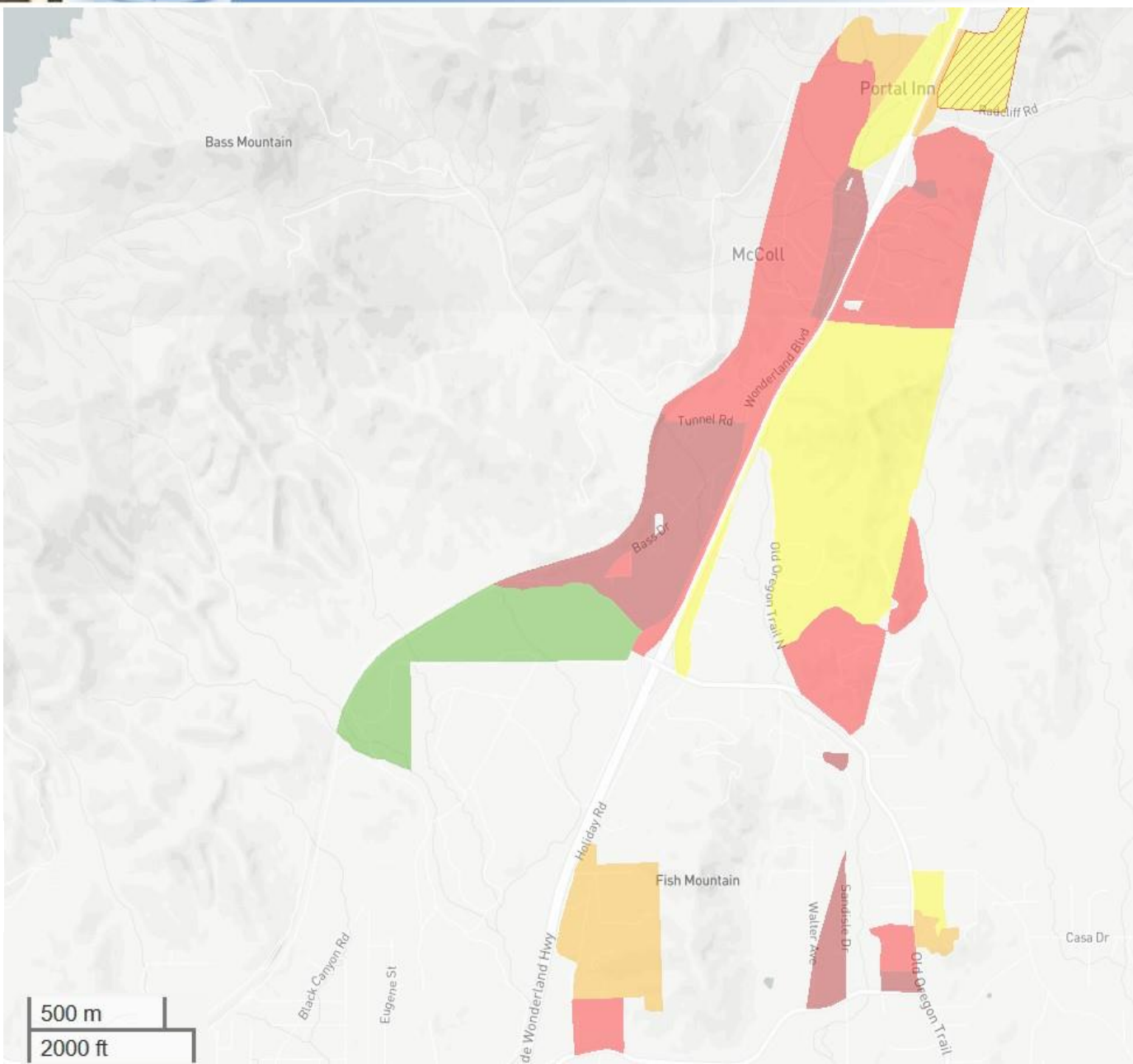
McColl Shasta County

Unserved Households – 424
 Population – 972
 Median Household Income - \$41,861
 CAFII Provider – AT&T

Density of Eligible Housing Units per Sq.Mi.

- 1 - 5
- 5 - 10
- 10 - 50
- 50 - 150
- 150 - 300
- 300 or Greater

- CAFII CAM43 Supported Locations
- CAFII Auction 903 Results
- CASF Approved Last Mile Projects





Upstate California Connect Consortium

Lucerne - Nice
Hobergs - Cobb -
Whispering Pines





Upstate California Connect Consortium

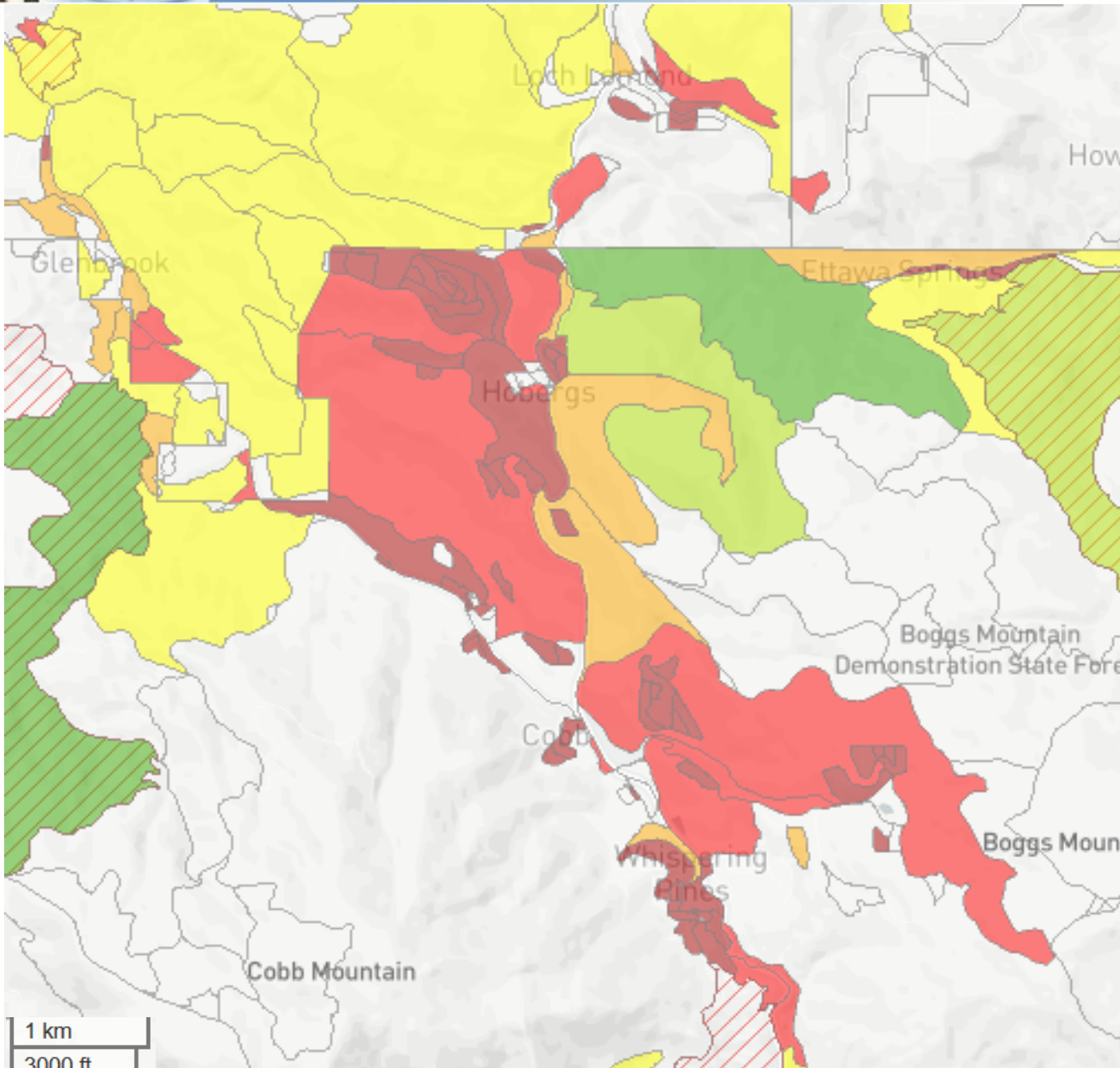
Hobergs-Cobb Whispering Pines Lake County

Unserved Households – 905
 Population – 2,072
 Median Household Income – \$62,670
 CAFII Provider – AT&T

Density of Eligible Housing Units per Sq.Mi.

- 1 - 5
- 5 - 10
- 10 - 50
- 50 - 150
- 150 - 300
- 300 or Greater

- CAFII CAM43 Supported Locations
- CAFII Auction 903 Results
- CASF Approved Last Mile Projects

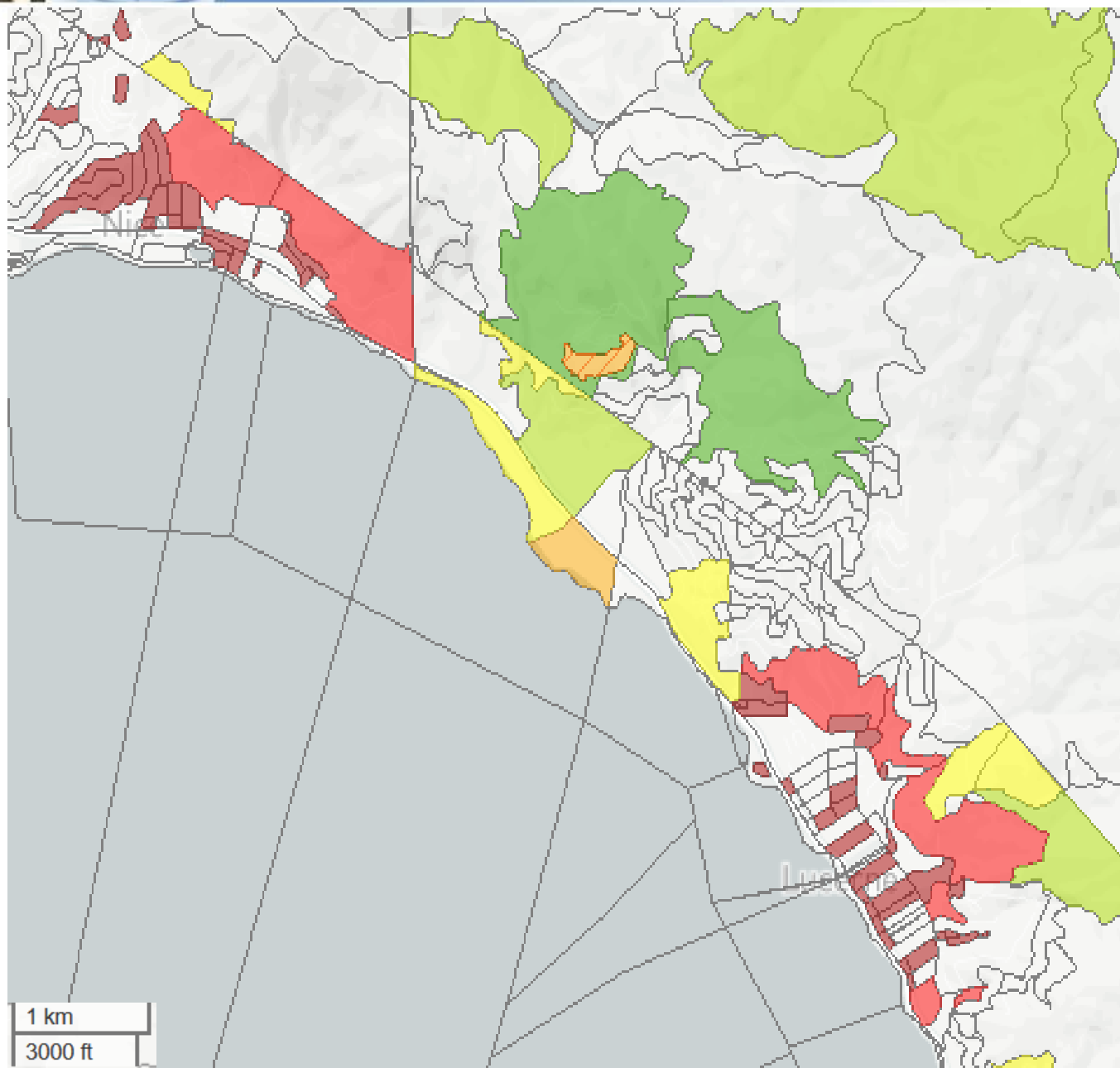




Upstate California Connect Consortium

Lucerne – Nice Lake County

Unserved Households – 650
 Population – 1,511
 Median Household Income - \$34,342
 CAFII Provider – AT&T



Density of Eligible Housing Units per Sq.Mi.

- 1 - 5
- 5 - 10
- 10 - 50
- 50 - 150
- 150 - 300
- 300 or Greater

- CAFII CAM43 Supported Locations
- CAFII Auction 903 Results
- CASF Approved Last Mile Projects



Upstate California Connect Consortium

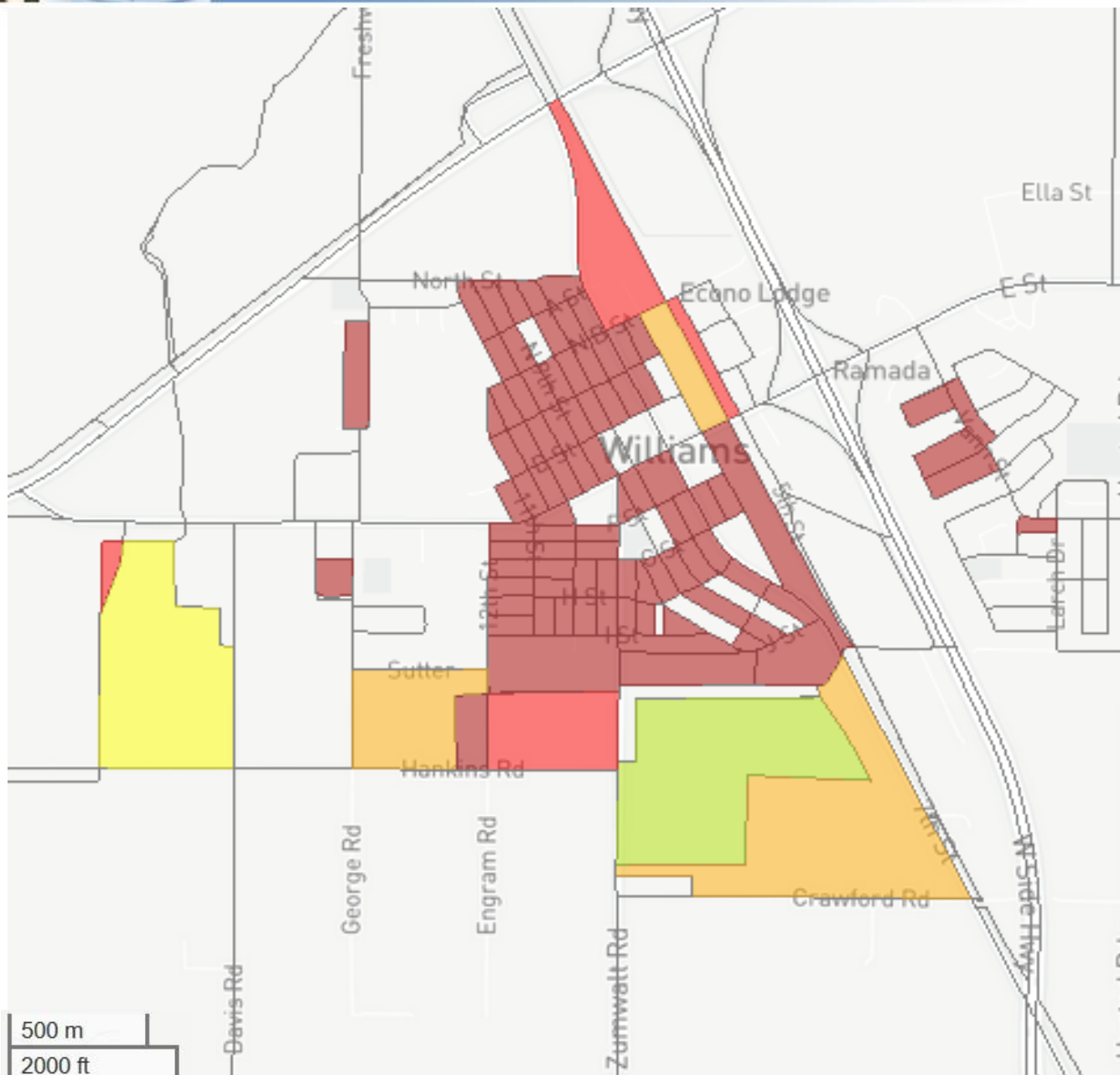
Williams Colusa County

Unserved Households – 709
 Population – 2,542
 Median Household Income - \$66,387

Density of Eligible Housing Units per Sq.Mi.

- 1 - 5
- 5 - 10
- 10 - 50
- 50 - 150
- 150 - 300
- 300 or Greater

- CAFII CAM43 Supported Locations
- CAFII Auction 903 Results
- CASF Approved Last Mile Projects





Connected Capital Area Broadband Consortium

Waldo Junction
Rancho Murieta





Connected Capitol Area Broadband Consortium

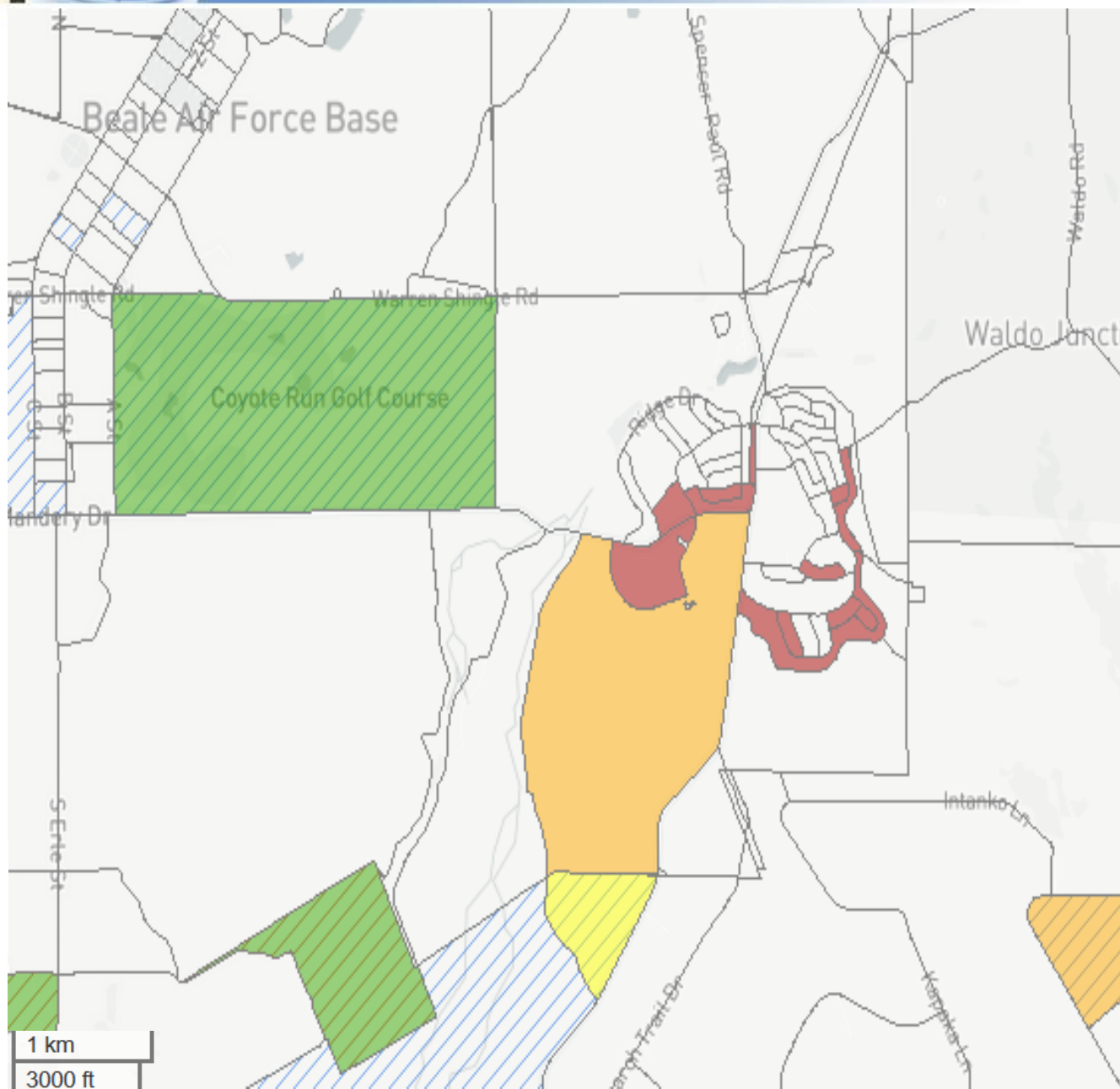
Waldo Junction Yuba County

Unserviced Households – 140
 Population – 505
 Median Household Income - \$71,831
 CAFII Provider – AT&T

Density of Eligible Housing Units per Sq.Mi.

- 1 - 5
- 5 - 10
- 10 - 50
- 50 - 150
- 150 - 300
- 300 or Greater

- CAFII CAM43 Supported Locations
- CAFII Auction 903 Results
- CASF Approved Last Mile Projects





Connected Capitol Area Broadband Consortium

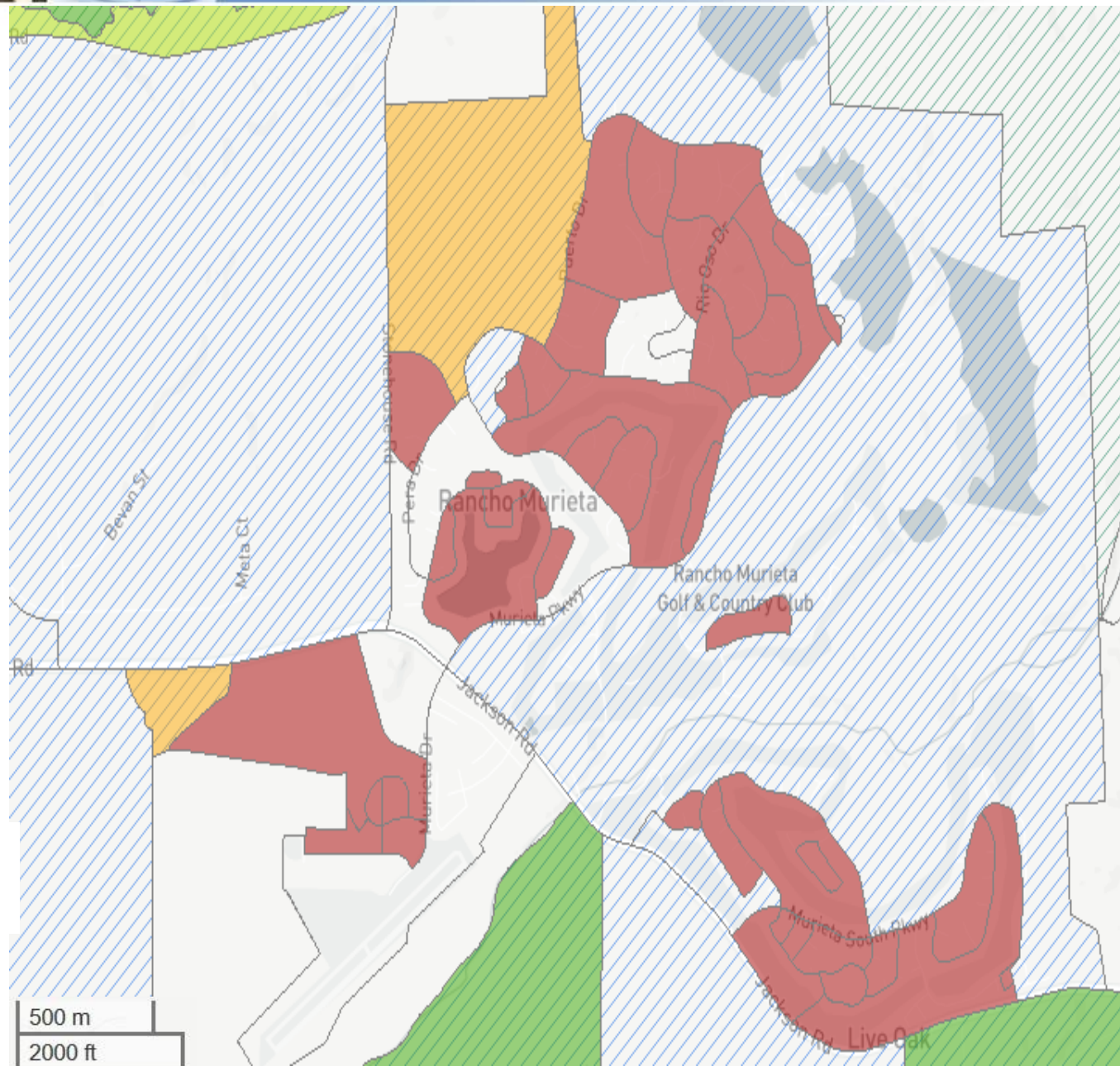
Rancho Murieta Sacramento County

Unserved Households – 1,641
 Population – 4,222
 Median Household Income – \$99,420
 CAFII Provider – AT&T

Density of Eligible Housing Units per Sq.Mi.

- 1 - 5
- 5 - 10
- 10 - 50
- 50 - 150
- 150 - 300
- 300 or Greater

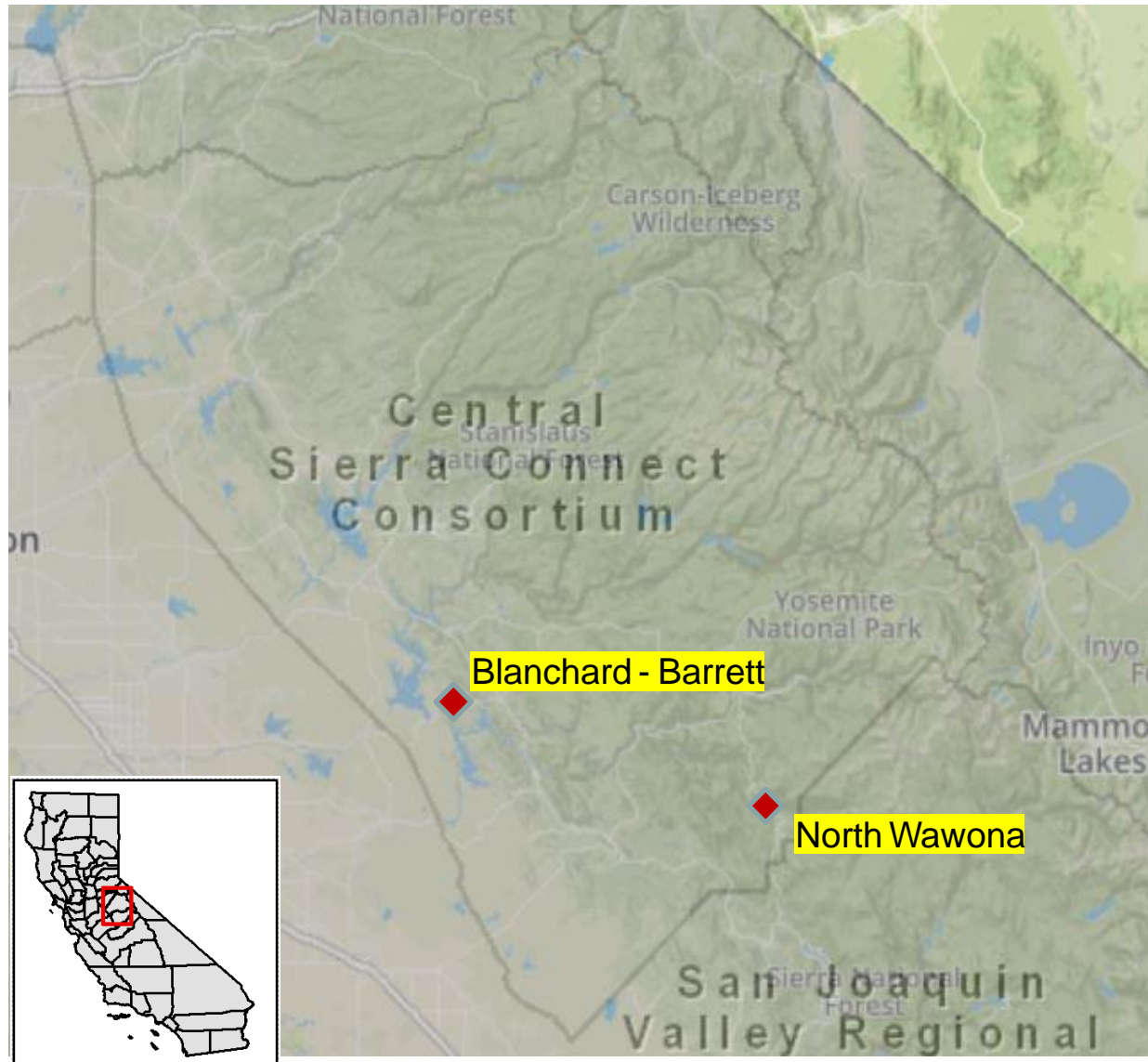
- CAFII CAM43 Supported Locations
- CAFII Auction 903 Results
- CASF Approved Last Mile Projects





Central Sierra Connect Consortium

Blanchard – Barrett
North Wawona





Central Sierra Connect Consortium

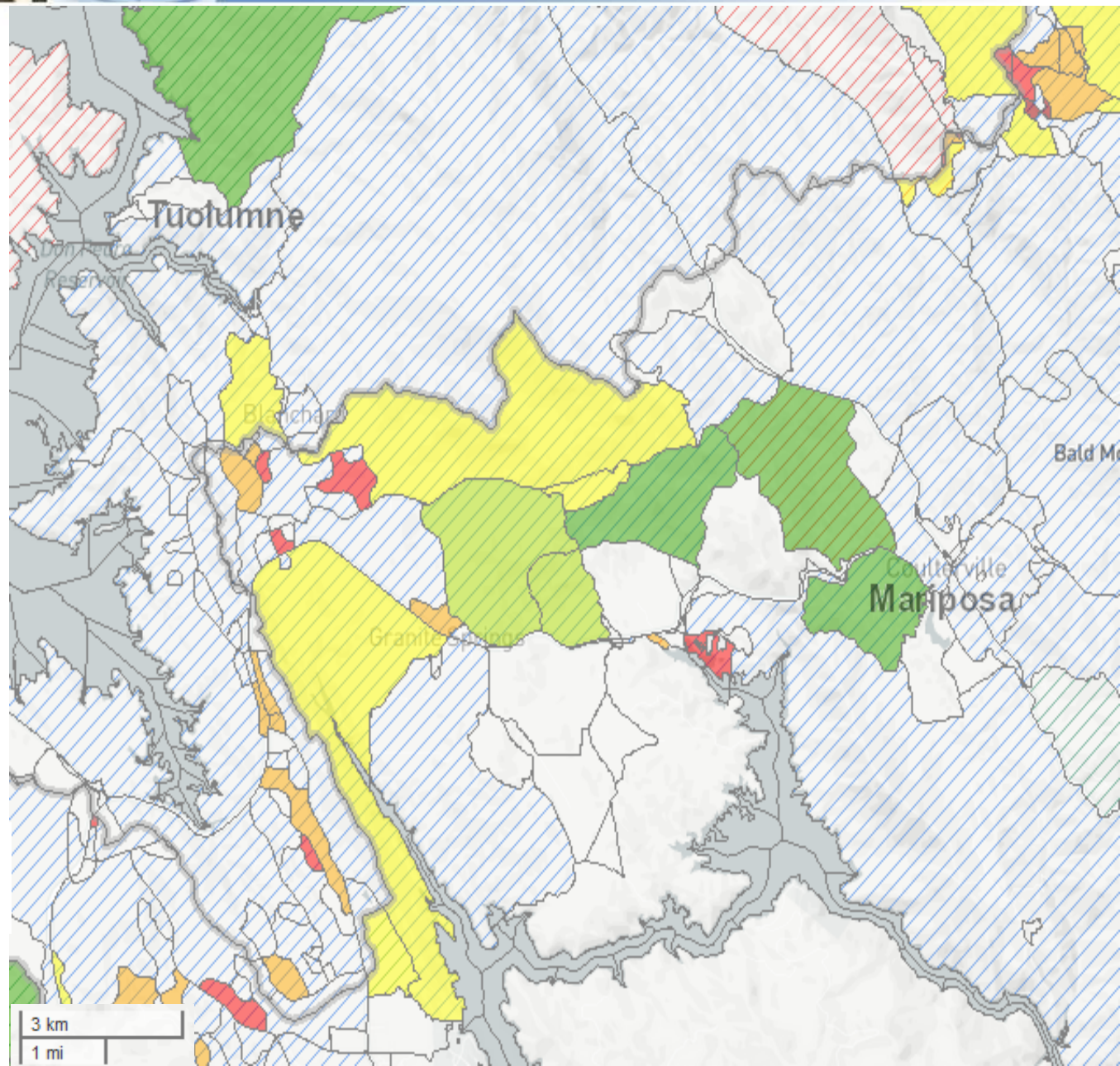
**Blanchard - Barrett
Tuolumne County
Mariposa County**

Unserved Households – 517
 Population – 853
 Median Household Income - \$46,653
 CAFII Provider – AT&T

Density of Eligible Housing Units per Sq.Mi.

- 1 - 5
- 5 - 10
- 10 - 50
- 50 - 150
- 150 - 300
- 300 or Greater

- CAFII CAM43 Supported Locations
- CAFII Auction 903 Results
- CASF Approved Last Mile Projects

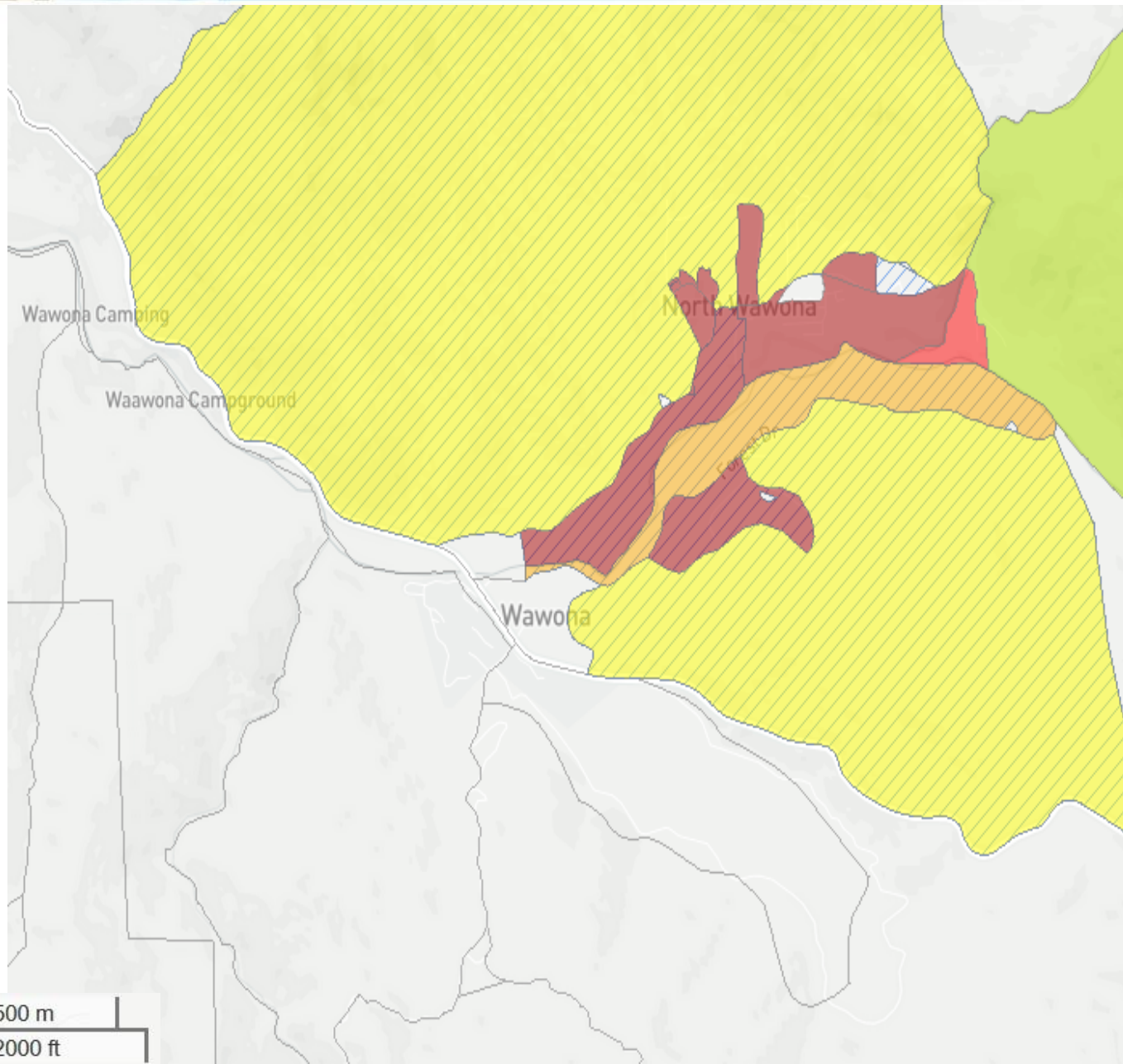




Central Sierra Connect Consortium

North Wawona Mariposa County

Unserved Households – 70
 Population – 166
 Median Household Income - \$72,583
 CAFII Provider – AT&T



Density of Eligible Housing Units per Sq.Mi.

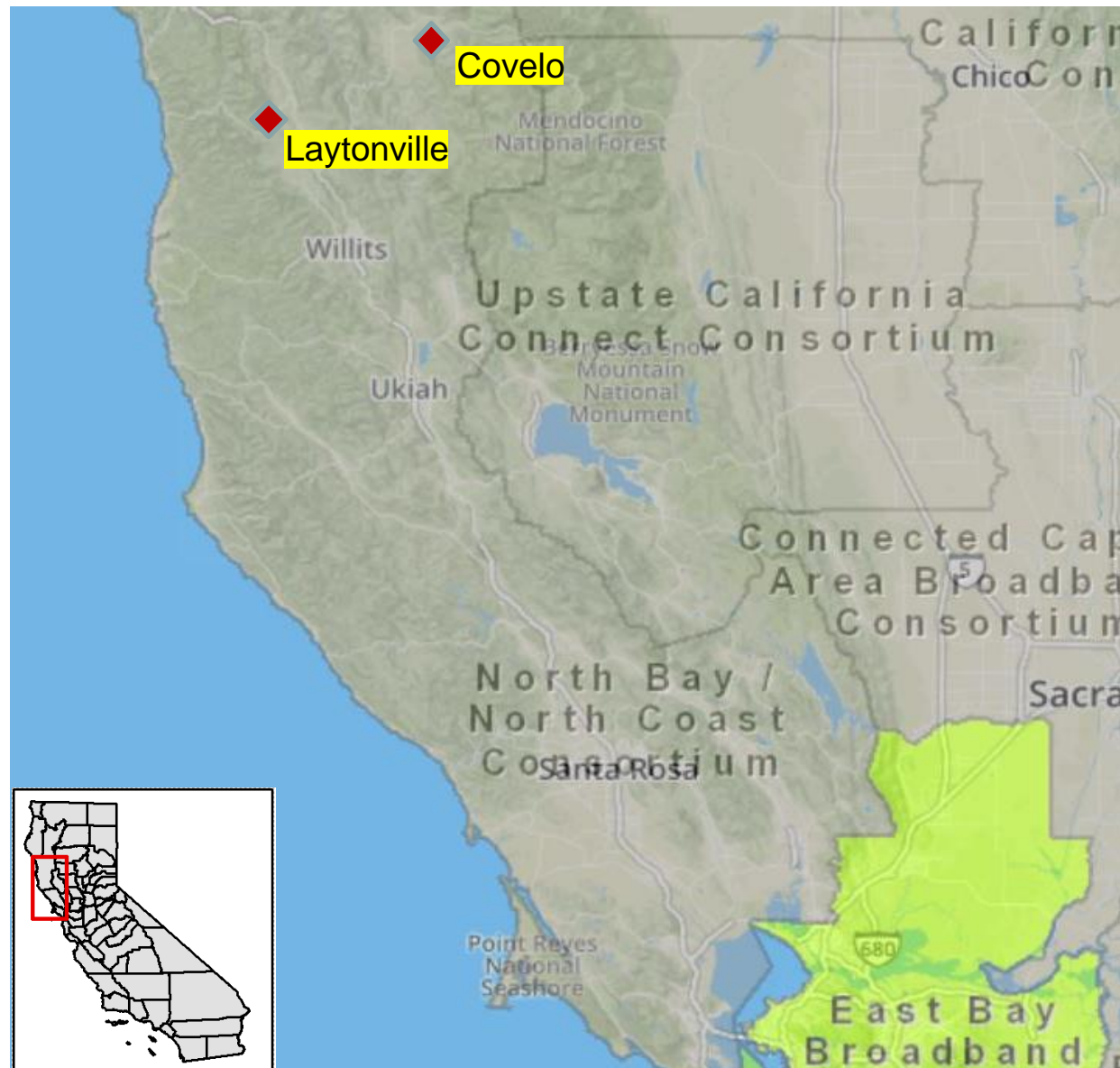
- 1 - 5
- 5 - 10
- 10 - 50
- 50 - 150
- 150 - 300
- 300 or Greater

- CAFII CAM43 Supported Locations
- CAFII Auction 903 Results
- CASF Approved Last Mile Projects



North Bay North Coast Broadband Consortium

Covelo
Laytonville





North Bay North Coast Broadband Consortium

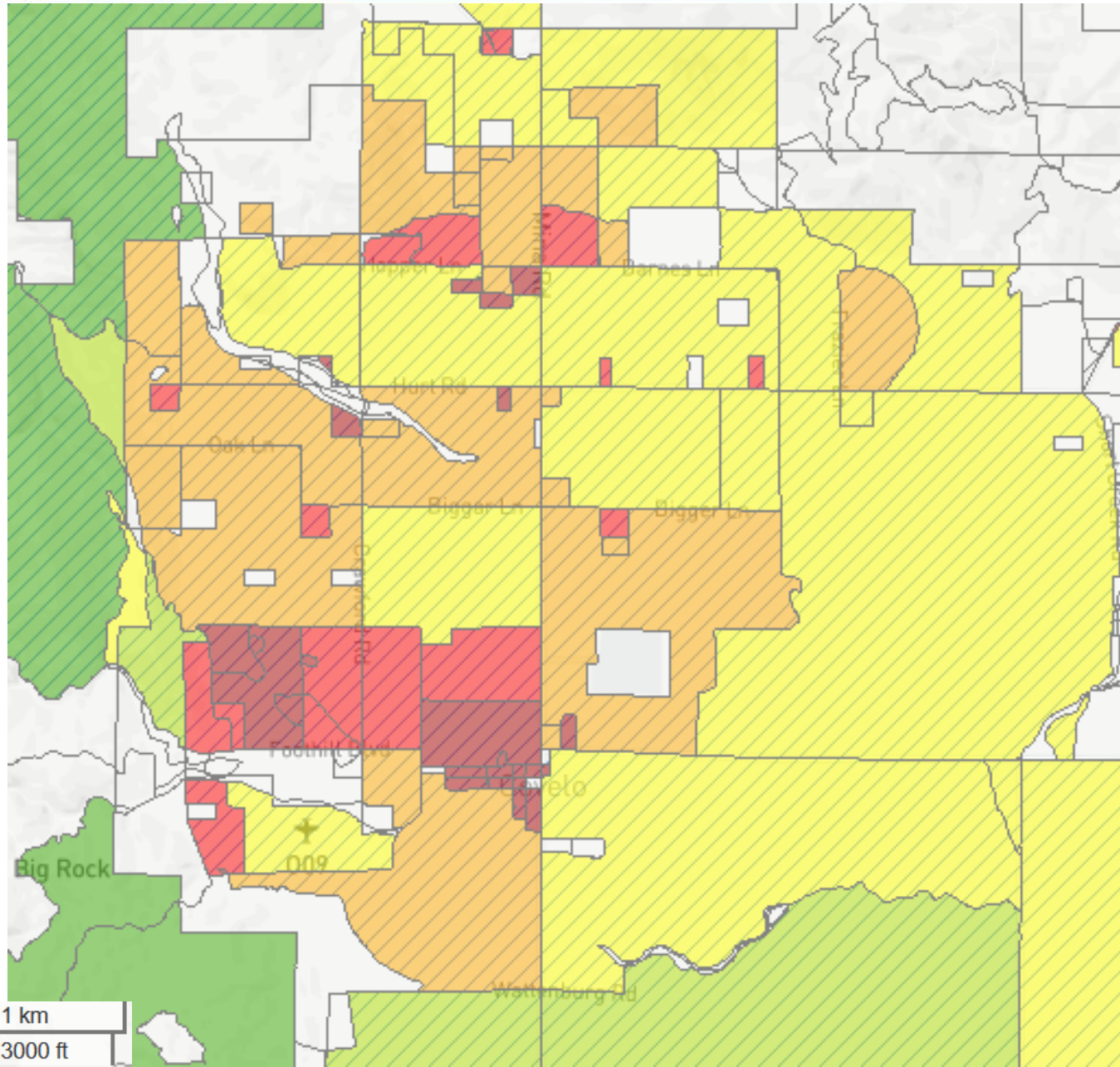
Covelo Mendocino County

Unserved Households – 772
 Population – 2,119
 Median Household Income - \$38,187
 CAFII Provider - *Frontier*

Density of Eligible Housing Units per Sq.Mi.

- 1 - 5
- 5 - 10
- 10 - 50
- 50 - 150
- 150 - 300
- 300 or Greater

- CAFII CAM43 Supported Locations
- CAFII Auction 903 Results
- CASF Approved Last Mile Projects





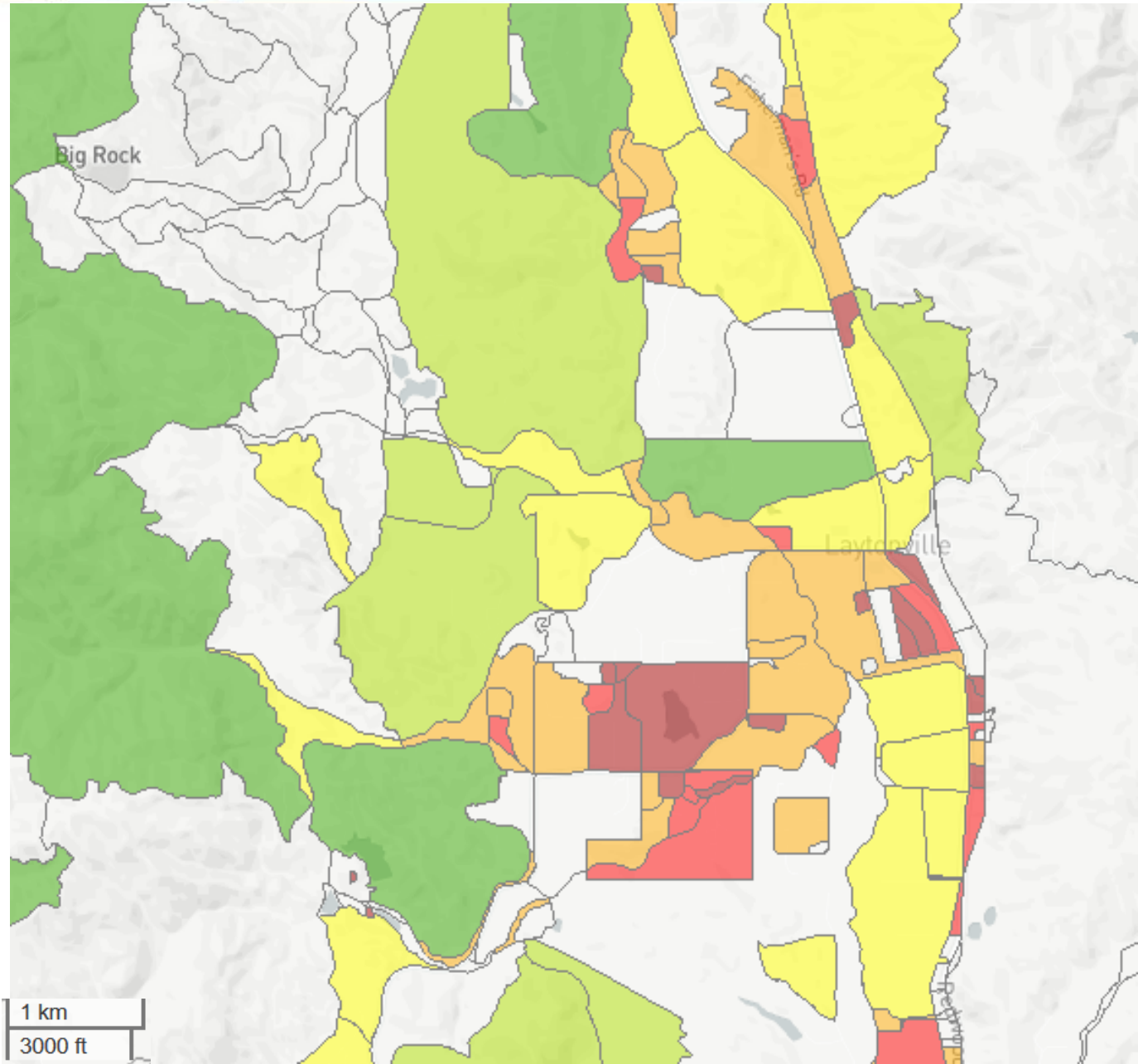
North Bay North Coast Broadband Consortium

Laytonville Mendocino County

Unserved Households – 532
Population – 1,322
Median Household Income - \$45,534

Density of Eligible Housing Units per Sq.Mi.

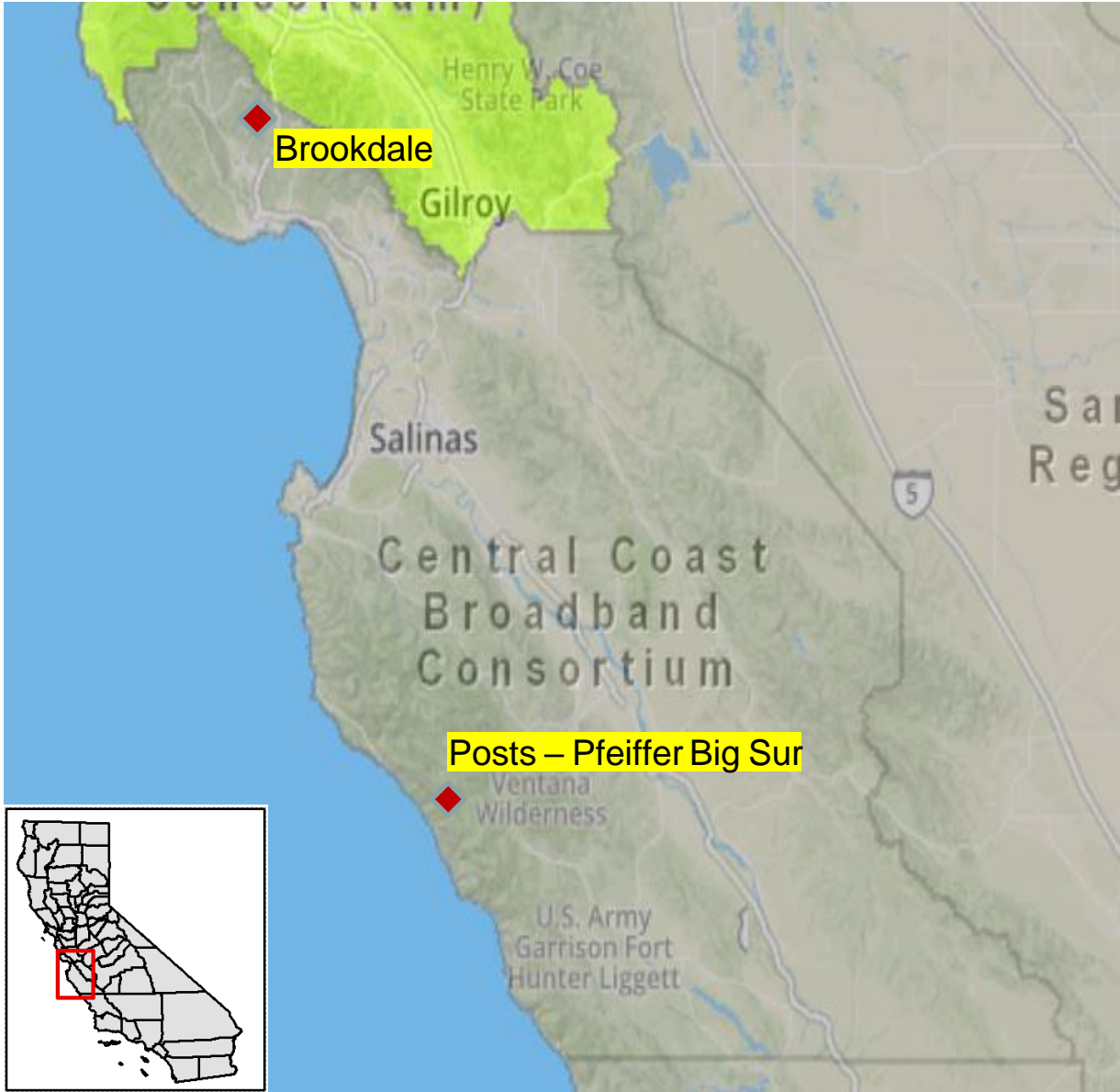
- 1 - 5
- 5 - 10
- 10 - 50
- 50 - 150
- 150 - 300
- 300 or Greater





Central Coast Broadband Consortium

Brookdale Posts – Pfeiffer Big Sur





Central Coast Broadband Consortium

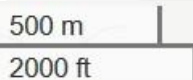
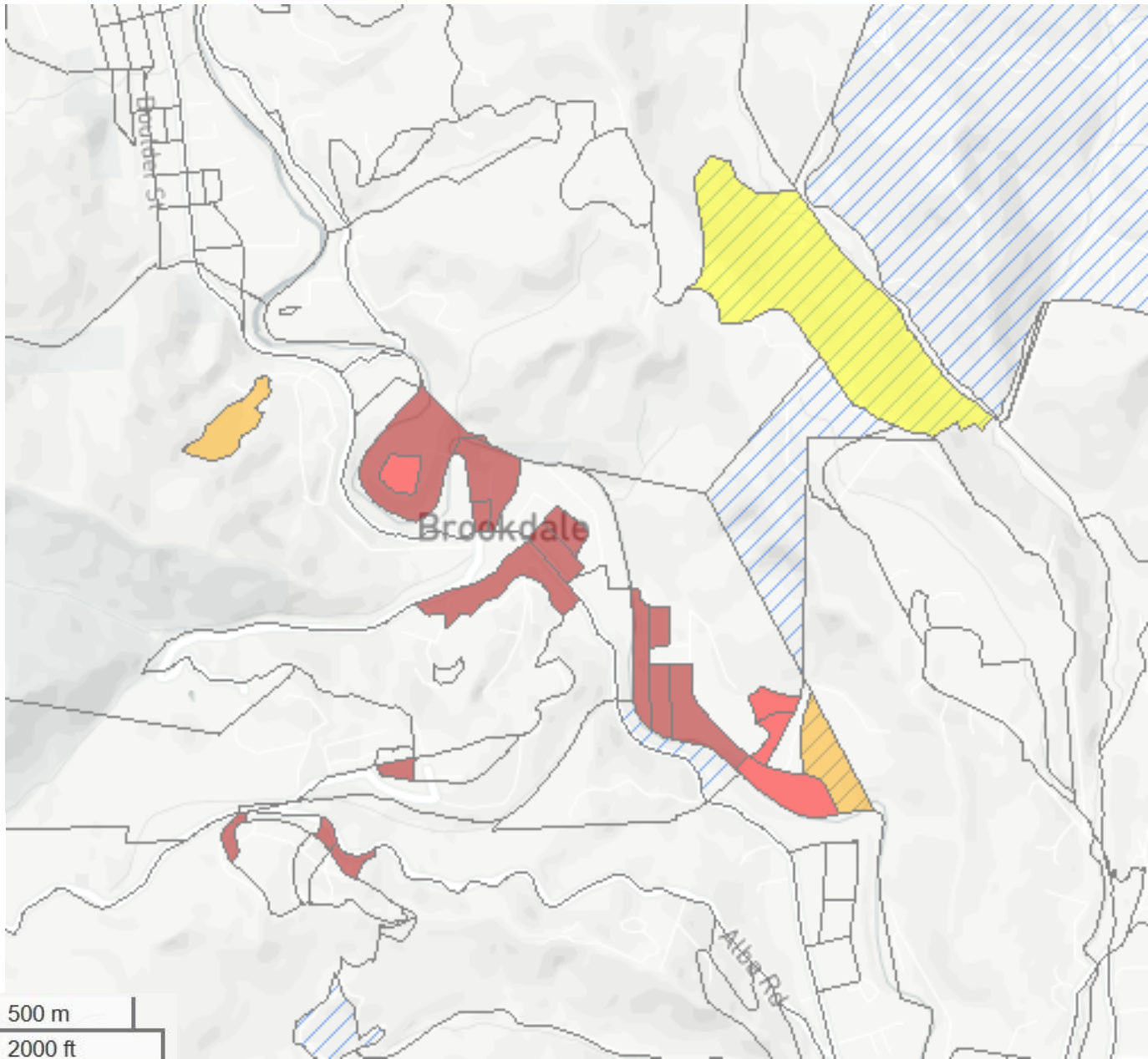
Brookdale Santa Cruz County

Unserved Households – 111
 Population – 315
 Median Household Income - \$85,313
 CAFII Provider – AT&T

Density of Eligible Housing Units per Sq.Mi.

- 1 - 5
- 5 - 10
- 10 - 50
- 50 - 150
- 150 - 300
- 300 or Greater

- CAFII CAM43 Supported Locations
- CAFII Auction 903 Results
- CASF Approved Last Mile Projects

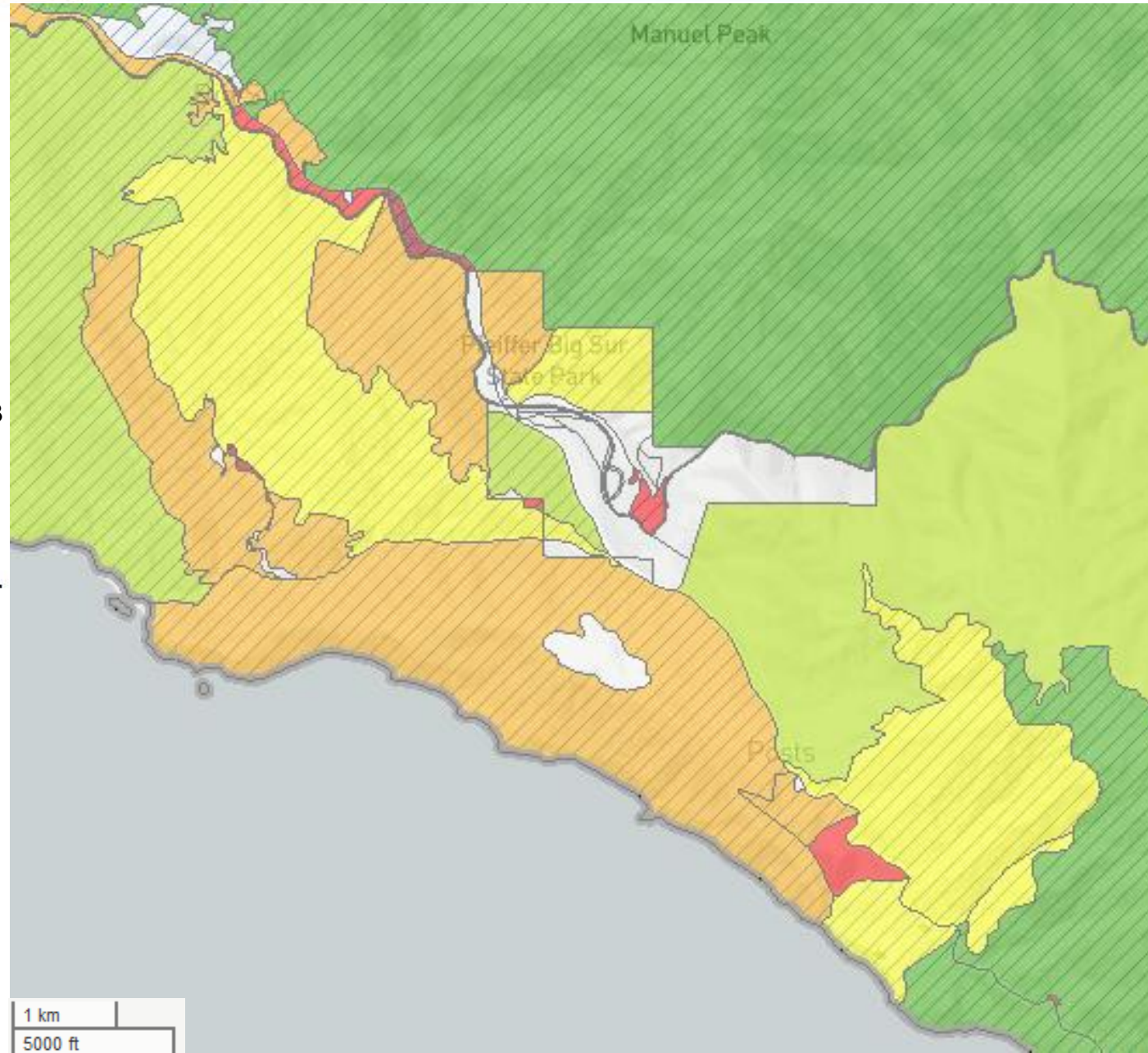




Central Coast Broadband Consortium

Posts – Pfeiffer Big Sur Monterey County

Unserved Households – 533
 Population – 838
 Median Household Income – \$63,843
 CAFII Provider – AT&T



Density of Eligible Housing Units per Sq.Mi.

- 1 - 5
- 5 - 10
- 10 - 50
- 50 - 150
- 150 - 300
- 300 or Greater

- CAFII CAM43 Supported Locations**
- CAFII Auction 903 Results**
- CASF Approved Last Mile Projects**



Thank you!
For Additional CASF Information:
<https://www.cpuc.ca.gov/casf>

[CASF Application Questions@cpuc.ca.gov](mailto:CASF_Application_Questions@cpuc.ca.gov)

Broadband Interactive Map questions:
CJ1@cpuc.ca.gov

