



# New CPUC Order on Pole Attachments

**Wireless West Conference  
Anaheim, California  
April 21, 2016**

**Charlotte F. TerKeurst**  
Program Manager  
Electric Safety and Reliability Branch  
Safety and Enforcement Division  
California Public Utilities Commission





## Decision (D.) 16-01-046 Issued in Rulemaking 14-05-001

In 1998, D.98-10-058 provided competitive local exchange carriers and cable television providers with nondiscriminatory access to public utility infrastructure.

D.16-01-046 now provides commercial mobile radio service (CMRS) carriers with nondiscriminatory access.

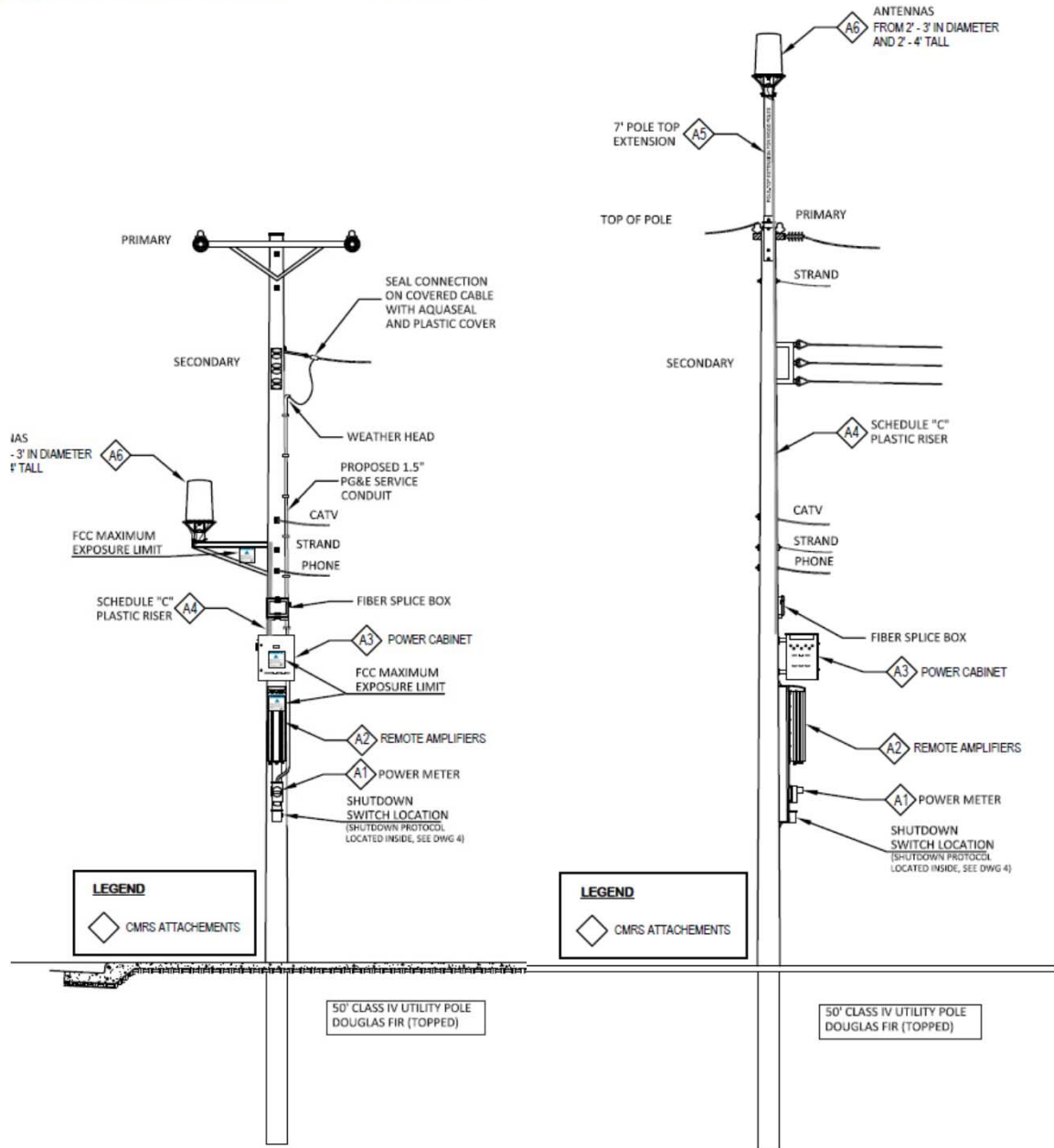
- Amends most right-of-way rules in D.98-10-058 to apply to CMRS.
- But adopts CMRS-specific pole-attachment fees (not addressed in this presentation).
- Amends General Order (GO) 95 to ensure that CMRS pole installations are safe.
- Provides that certain other issues may be considered later.





# Typical CMRS Attachments

(source: AT&T)





# GO 95 Safety Amendments

(page 1 of 3)

- Prohibit antenna installations that obstruct pole climbing space or interfere with fall-protection gear.

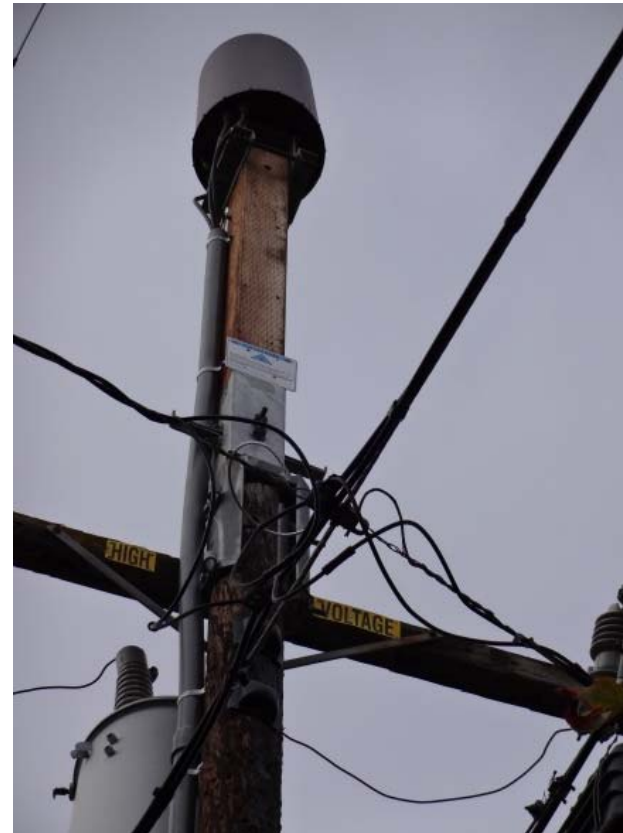




# GO 95 Safety Amendments

(page 2 of 3)

- Require pole-overturning calculations for new pole-top antenna attachments.





# GO 95 Safety Amendments

(page 3 of 3)

- Generally prohibit antennas on guard arms.
- Clarify requirements for signs regarding radio-frequency radiation of antennas.
- Clarify protocols for de-energizing antennas.
- Only qualified workers may work on wireless facilities installed above supply lines.





# Pending Issues

(page 1 of 2)

D.16-01-046 directs that SED shall:

- Evaluate whether the definition of “material increase” in existing Rule 44.2 should be revised.

Rule 44.2: Any entity planning the addition of facilities that materially increases loads on a structure shall perform a loading calculation...

Note: ... a material increase in load is an addition which increases the load on a structure by more than five percent per installation, or ten percent over a 12-month span, of the electric utility’s or Communication Infrastructure Provider’s current load.





# Pending Issues

(page 2 of 2)

## SED shall:

- Develop a proposed rule regarding interference with fall-protection gear, to apply to all pole attachments.
- Develop a proposed rule regarding pole overturning calculations, to apply to all pole-top (and perhaps other) installations.

## SED may:

- Resubmit its proposed Rule 94.3-D regarding safety factor calculations, and address whether it should apply to all pole attachments, or just CMRS.







# Upcoming CPUC *en banc* on Pole Safety

April 28, 2016

9:30 am – 5 pm

Ronald Reagan State Building—Auditorium

300 S. Spring St

Los Angeles, CA 90013

Agenda and media advisory available at:

<http://www.cpuc.ca.gov/General.aspx?id=10150>

