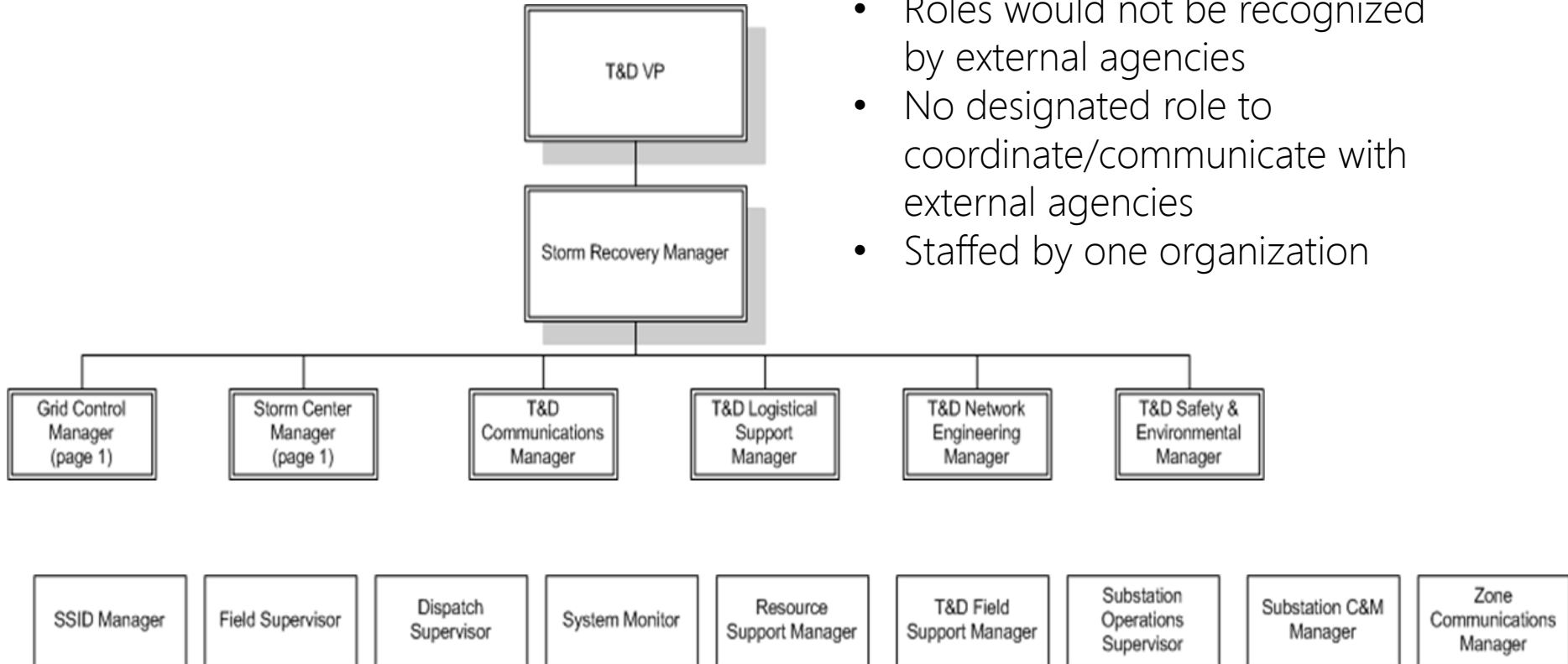


NIMS as Utility Emergency Management Best Practices

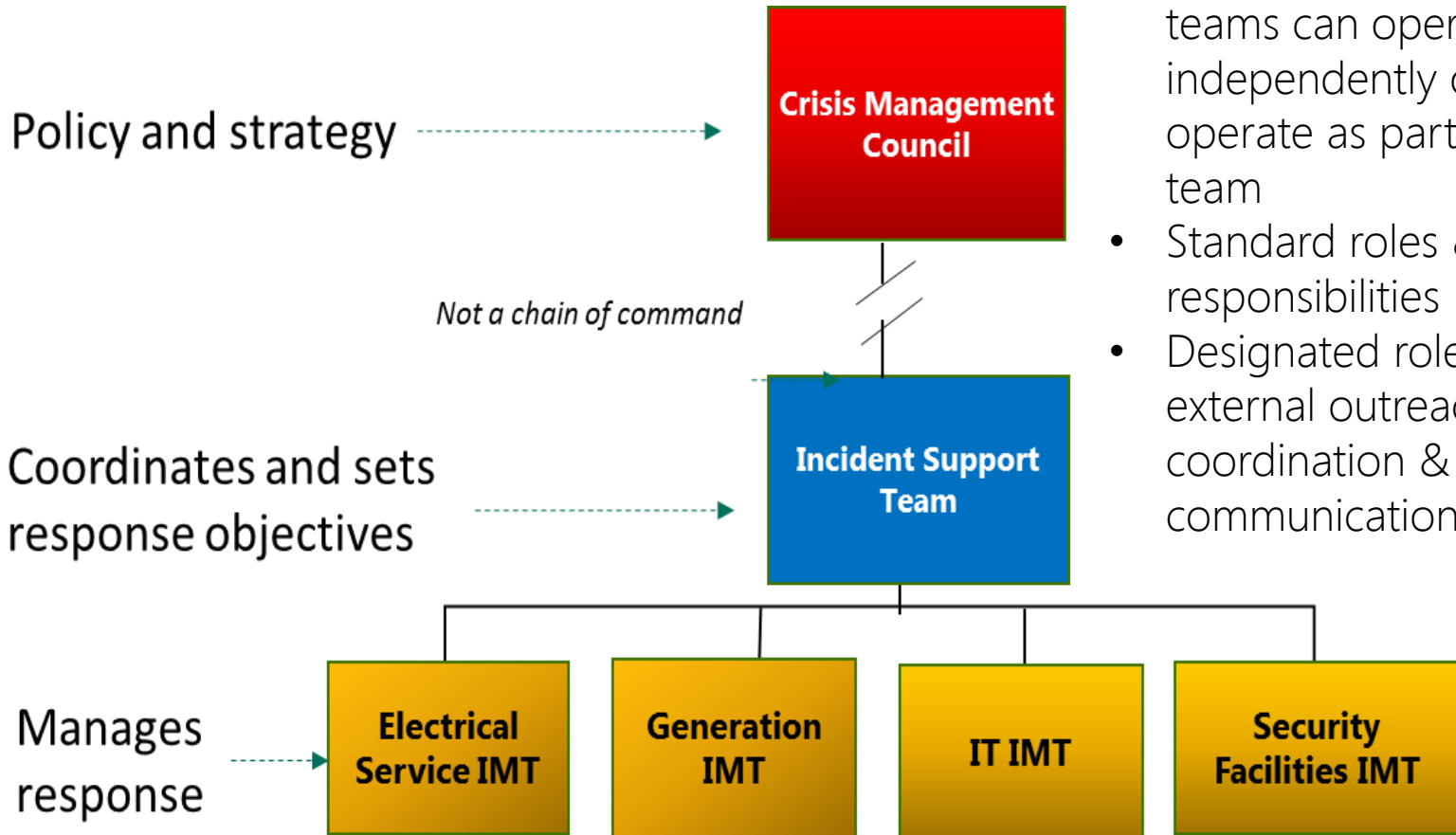
Don Daigler
Director, Business Resiliency
Southern California Edison

SCE Response Structure (2011)

- One dimensional
- Roles would not be recognized by external agencies
- No designated role to coordinate/communicate with external agencies
- Staffed by one organization



SCE's Current Response Structure (Since 2013)



- Multidimensional
- Scalable & flexible - teams can operate independently or can operate as part of one team
- Standard roles & responsibilities
- Designated roles for external outreach, coordination & communication

SCE's Response Parallels the Public Sector Response



SCE as an Investor Owned Utility is a private company operating within a public sector response framework, and operates similarly with respect to:

- **Preparedness:** National Preparedness System
- **Planning:** Comprehensive Preparedness Guide (CPG 101)
- **Exercises:** Homeland Security Exercise Evaluation Program (HSEEP)
- **Incident Response:** National Incident Management System (ICS)
- **National Integration:** Infrastructure Protection Plan & Sector Specific Plan

Strength of Standardization

SCE

Organization Assignment List (ICS 203)

Incident Name Storm/Event 1716	Operational Period	Date From 2017-09-02T14:27:50 Time From 08:00:00	Date To 2017-09-04T14:27:50 Time To 20:00:00
Incident Commander(s) and Command Staff		Operations Section	
IC/UCs	Anthony Edeson	Chief	Brian Howard/Kurt Carlson
		Deputy	
Deputy		Grid Ops Branch Director	Charlie Clifford
Safety Officer	Angela Little	Staging Area	
SES	Daniel Thomason	Lighthi	
Public Info. Officer	Brian Leventhal	Branch Director	Charles Clifford
Liason Officer	Carolyn Sims	Deputy	Richard Floyd
Agency/Organization Representatives		Mesa	
Agency/Organization	Name	Branch Director	Charles Clifford
		Deputy	Richard Floyd
		Mira Loma	
Planning Section		Branch Director	Charles Clifford
Chief	Rachel Lupo	Deputy	Richard Floyd
Deputy		Other / Unaffected Areas	
Resources Unit	Jennifer Potter	Branch Director	Charles Clifford
Situation Unit	Toni Baker	Deputy	Richard Floyd
Documentation Unit	Eleanor Olivas	Pier Fire	
Demobilization Unit		Branch Director	
Technical Specialists		Deputy	
		Civil	
Logistics Section		Generation	
Chief	Bruce Drew	Restoration	
Deputy		Vista	
IT Branch Director	Doug Cooper	Branch Director	
Support Branch		Deputy	
Director		Air Operations Branch	
Supply Unit		Air Ops Branch Dir.	
Facilities Unit			
Ground Support Unit		Finance/Administration Section	
Service Branch		Chief	William Gayler
Director		Deputy	
Communications Unit			
Medical Unit		Comp/Claims Unit	
Food Unit		Cost Unit	
Prepared by Name Eleanor Olivas Signature _____	Position/Title Document Unit Date/Time 08/31/2017 12:47:13		

Common process, roles and responsibilities among multiple agencies promotes seamless integration between public and private sectors

Cal Fire

ORGANIZATION ASSIGNMENT LIST (ICS 203)

1. Incident Name WHITTIER		2. Operational Period DAY	
Date/Time From: 07/11/2017 0700		TUE	Date/Time To: 07/11/2017 1900
3. Incident Commander(s) and Command Staff:		MEDICAL UNIT	LENSKE/RUBINSTEIN (T)
IC/UC	MARK VON TILLOW	SECURITY UNIT	ROY CAMERON
IC/UC	WOODY ENOS	FOOD UNIT	ADAM TAT
IC/UC	SCOTT JALBERT	7. Operations Section:	
DEPUTY	LARRY SAVAGE	DAY OPS SECTION CHIEF	PATRICK RUSSELL
SAFETY OFFICER	DAVID UPDYKE LARRY WRIGHT	NIGHT OPS SECTION CHIEF	MIKE APPLING
INFORMATION OFFICER	MIKE LINDBERY	PLANNING OPS	JOHN LANE
LIAISON OFFICER	ROBBIN EKMAN/ PAT MCELROY STEVE OAKS (T)	OPS SECTION CHIEF	
4. Agency/Organization Representative(s):		STAGING AREA	
Agency/Organization	Name	Branch	I
SBC SHERRIF	BRIAN OLMSTEAD	BRANCH DIRECTOR	ALEX MCBATH
SBC SHERRIF	LT. SHAWN LAGRADY	DEPUTY	
CHP	S.P. REID	DIVISION/GROUP	Y TBA
OES	ART TORREZ	DIVISION/GROUP	Z BRUCE CARLISLE
LPF AGENCY REP	PONCHO SMITH	DIVISION/GROUP	A DEANO ESADES
SCE	SCOTT BROWN	DIVISION/GROUP	B LEON JEFFREY
RED CROSS	PAMELA VOGUE	Branch II	
5. Planning Section:		BRANCH DIRECTOR	RICHARD HERRERA
CHIEF	GARY D MONTGOMERY	DEPUTY	
		DIVISION/GROUP	H TBA
		DIVISION/GROUP	K UNSTAFFED
		DIVISION/GROUP	M TBA
		Branch III	
		BRANCH DIRECTOR	
		DEPUTY	
		DIVISION/GROUP	P UNSTAFFED
		DIVISION/GROUP	R UNSTAFFED
		DIVISION/GROUP	T UNSTAFFED
		DIVISION/GROUP	W UNSTAFFED
7b. Air Operations Branch:		AIR OPS BRANCH DIRECTOR	
		AIR ATTACK SUPERVISOR	TERRY HARRIS
		AIR SUPPORT SUPERVISOR	KELVIN E MSELFISH
6. Logistics Section:		9. Finance/Administration Section:	
CHIEF	BRIAN L GADDIS	CHIEF	DENNIS STEVENS/HEIDI BARAJAS (T)
SUPPLY UNIT	MARTIN HERNANDEZ	TIME UNIT	J WHITE/J PRINCE
FACILITIES UNIT		PROCUREMENT UNIT	PJ VILHAUER/J KINGSBURY
GROUND SUPPORT UNIT	B. CLARK/J. SILVA	COMPENSATION UNIT	
COMMUNICATIONS UNIT	CLAY FLAD	COST UNIT	T MONAHAN/ E MOLINA (T)
9. Prepared By: Name: A. WEBSTER	Position/Title: RESL	Signature:	
ICS 203	IAP Page	Date/Time: 07/10/2017 2013	

What Does It Take to Implement NIMS and ICS

Executive (CEO) Commitment

- Adhere to the standards as they are written
- Minimize modifications
- Participation on IMT is a core job responsibility
- Participation in exercises is a core job responsibility
- Adequate funding

Culture

- Important to manage the change during implementation
- Important to make the case for the change

Expertise

- Consultant/FTEs – to guide implementation
- Principled adherence to standards is critical
- Existing utility employees will be constrained in implementing the frameworks previously mentioned without some outside assistance