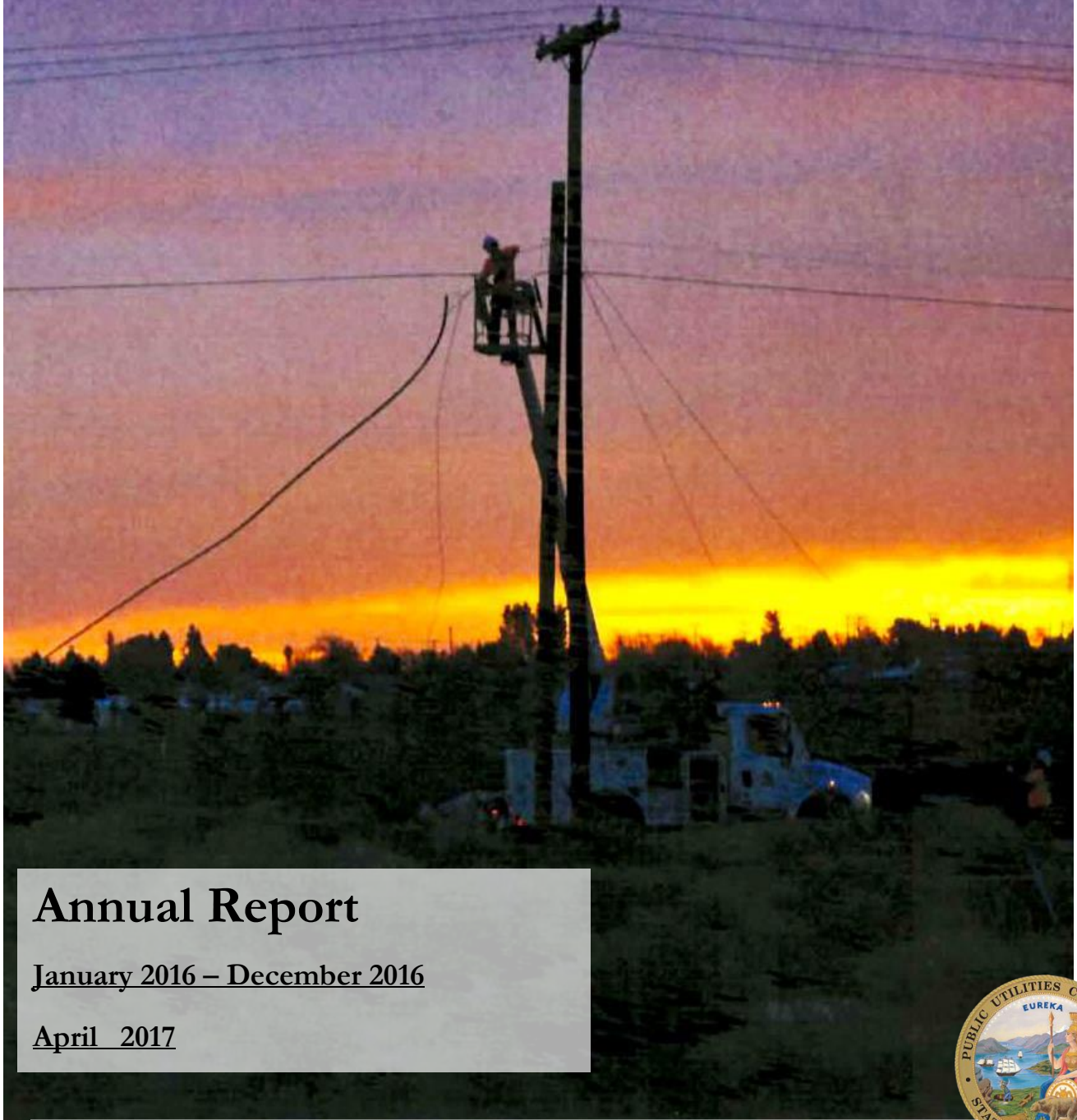




California Advanced Services Fund

A program to bridge the digital divide in California



Annual Report

January 2016 – December 2016

April 2017



Photo: Installation of CASF subsidized optical fiber near Boron, California

Table of Contents

I. Executive Summary	2
II. CASF Program Background	6
III. Reporting Pursuant to Public Utilities Code 914.7(a)	6
A. CASF Funding Expended in 2016	7
B. CASF Expenditures and Fund Condition	8
C. Recipients of CASF Funds and Regions Affected in 2016	9
D. Expected Benefits and Adoption from 2016 CASF Expenditures	25
E. Leveraging Program Funds with Federal Funds	31
F. FCC’s CAF II Program May Not Solve 98% Availability Goal	31
G. Remaining Unserved and Underserved Households in California	35
H. CASF Fund Balance and Projected Revenues Through 2020	46
IV. Second Interim Financial and Performance Audit	47
V. Attachment	48
Attachment A-1: Approved CASF Infrastructure Projects	49
Attachment A-2: Pending Infrastructure Projects	54
Attachment A-3: Infrastructure Projects Denied, Withdrawn or Inactive	55
Attachment A-4: Rescinded Infrastructure Projects	56
Attachment B: 2016 Consortia Account Reported Benefits	58
Attachment C: Approved Public Housing Infrastructure Grants	63
Attachment D: Approved Public Housing Adoption Grants	73
Attachment E: Served Status by Region and County	75

I. Executive Summary

The California Public Utilities Commission (CPUC) submits this annual report (pursuant to California Public Utilities (PU) Code section 914.7(a) for calendar year 2016 of the CPUC's California Advanced Services Fund (CASF) program.¹

This CASF Annual Report to the Legislature presents financial and programmatic highlights through the year 2016, including awards, expenditures, federal funds and surcharge collections. The impact of the CASF program is described in terms of geographic regions, remaining unserved and underserved areas in need of broadband access, subscriptions and potential benefits. The CASF program provides:

Most program funds are for infrastructure deployment. Some funds are for broadband awareness, training and access devices via the consortia and public housing programs.

- (1) Grants and loans for deployment of broadband infrastructure in unserved and underserved areas;
- (2) Grants to regional consortia to advance broadband deployment, access and adoption;
- (3) Grants to public housing for access and/or adoption activities.



Homes in Paradise, CA, population 120, project funded by CASF

¹ The CPUC's Communications Division staff prepared this report.

The CASF Program continues to make steady progress toward closing the digital divide in California. As of December 31, 2016, there have been 58 CASF infrastructure project grants awarded and 33 completed. Together, the 58 projects are required to build facilities to 57,846 households and to build middle-mile facilities in areas that potentially reach an additional 52,909. In total, the 58 projects will potentially benefit 110,755 unserved and underserved households combined.² The 33 completed and 1 partially completed infrastructure projects as of December 31, 2016, offer broadband service to 15,887 households in their respective areas and 44% of households subscribe.³ In 2016, 12 grants were awarded to regional Consortia to continue their initiatives aimed at increasing broadband deployment, access and adoption in the geographic regions they represent. There were 189 public housing infrastructure grants approved providing free or low-cost Wi-Fi or DSL to 11,752 units, and 43 adoption projects approved to provide digital literacy training to public housing locations with 9,653 residents.

Served speed is defined as service having at least 6 Mbps down and 1.5 Mbps up. **Unserved** is where service speed is less than 768 Kbps down or 200 Kbps up. **Underserved** is in between.

On March 2, 2017, the CPUC opened a proceeding to implement Senate Bill 745 (SB 745) which amends Sections 281 and 914.7 of the Public Utilities (PU) Code⁴. SB 745 added language for the inclusion of representatives of workforce organizations and air pollution control or air quality management districts to be included in the eligible consortia. It mandated that only unserved⁵ housing developments be eligible for Public Housing Account infrastructure funding. Additionally, SB 745 extended the Public Housing Account and postponed the return of moneys to other accounts within the CASF until December 31, 2020. The proceeding is expected to conclude in 2017.

² Data based on CASF resolutions approving the 58 infrastructure projects. See <http://www.cpuc.ca.gov/General.aspx?id=1057>.

³ Includes 209 subscriptions associated with middle-mile project facilities that also directly connect to a household. This does not include the subscriptions of ISPs not associated with the grants that interconnect with CASF middle-mile projects.

⁴ SB 745 was signed by Governor Brown on September 27, 2016

⁵ Per SB 745, a housing development is unserved when at least one housing unit within the housing development is not offered broadband Internet service.

Table 1, below, is a summary of awards for each of the CASF accounts from their inception through calendar year (CY) 2016 as well as their outstanding applications pending review as of December 31, 2016.

Table 1. CASF Summary of Awards as of December 31, 2016

CASF Account	Total Authorized Funding Since Programs' Inception	Total Awarded from Programs' Inception through CY 2015	Total Awarded in CY 2016	Total Awarded from Programs' Inception through December 2016	Outstanding Application Requests
Infrastructure Grant	\$270,000,000	\$123,486,699	\$29,464,713	\$152,951,412	\$126,510,301
Infrastructure Loan	\$5,000,000	\$626,654	\$0	\$0	
Consortia	\$15,000,000	\$8,873,476	\$3,226,376	\$12,099,852	\$1,442,808
Public Housing	\$25,000,000	\$2,497,866	\$6,860,800	\$9,358,666	\$10,163,765
Totals	\$315,000,000	\$135,484,697	\$39,551,887	\$174,409,930	\$138,116,873
Fund Balance (as of 12/31/2016) = \$150,222,020					

Per PU Code section 281 (b)(1); “The goal of the program is, no later than December 31, 2015, to approve funding for infrastructure projects that will provide broadband access to no less than 98 percent of California households.”⁶ The CPUC considers an area served if broadband is available at speeds of 6 Mbps downstream and 1.5 Mbps upstream, or greater. Based on this definition of “served” availability, Table 2 below, shows that Statewide, an estimated 95 percent of households have access to wireline broadband at served speeds.⁷ In addition, the 98 percent broadband access goal has been met for households located in urban areas, while only an estimated 47 percent of households in rural areas have access to broadband at served speeds. Regarding mobile broadband, the majority of households in all areas of California do have access to mobile services, however when 98 percent reliability standards are applied to the source data, only an estimated 10 percent of rural households have access to mobile broadband at served speeds.⁸

⁶ PU Code section 281(b)(1) and D.12-02-015, p.17.

⁷ There is no reference to the word “served” in the statute. Based on a literal reading of the statute, the Commission could define the program such that the underserved household counts are added to the served household counts, and therefore the program would have already met the 98% goal.

⁸ See Table 13 “Mobile Broadband Availability.”

Table 2. Percentage of Rural and Urban Household Availability by Technology

	Statewide Households Served	Urban Households Served	Rural Households Served
Wireline*	95.2	97.9	46.5
Fixed Wireless*	30.6	-	-
Mobile**	7.8	7.7	9.9
Combined Technologies	97.6	-	-

* Estimates based on December 2015 Broadband Availability Data.

** Estimates based on Spring 2016 mobile field testing using interpolated mean minus 2 standard deviation results.

Major aspects of broadband data collection have changed over the course of the program. Mobile analysis, for example, no longer relies on broadband speeds reported by the providers. We now rely entirely on our own CalSPEED testing program to measure mobile broadband performance. Enhancements to our test protocol have allowed us to identify quality and reliability factors that impact mobile users as much or more than throughput speeds. As a result, the percent of households estimated to be “served” by mobile broadband has been reduced from 99% based on advertised speeds to 8% based on interpolated mean minus two standard deviations.

The combined data suggests that availability is nearly to at 98 percent goal. However, substantive caveats must be considered: fixed-wireless providers may not serve all households within identified census block reporting areas, the consortia and public have expressed a preference for wireline service and there is debate about whether mobile is an adequate substitute service (e.g. mobile service is variable and has relatively low data caps). Further, the CPUC determined in the recent market competition preceding that mobile broadband was not a substitute for wireline broadband.⁹

The data confirms that there is an urban versus rural broadband availability divide. Shown in Attachment F is “served” broadband status by county. Most counties have broadband availability below the statewide 98 percent goal, and only six counties, having relatively large populations and large population density, exceed the 98 percent standard.

⁹ Decision 16-12-025, Finding of Fact 7(g).

Since its inception in 2008, progress of CASF program has been modest. As part of an effort to attain the 98% program goal, the CPUC’s Communication Division (CD) staff published a “high-impact analysis” white-paper report in February 2017, identifying areas that contain unserved and underserved areas. The report identifies over 34,000 households, and about 9% of the remaining 360,000 households that must be served in order to meet our 98% broadband availability statutory mandate. Further, CD staff held workshops on February 28, 2017 in an effort to gather public views on program strategies to assess and improve the CASF program. This effort may result in program modifications following a public comment process and a CPUC order.

II. CASF Program Background

The CPUC established the CASF program in Decision 07-12-054. Senate Bill 1193 (Stats. 2008, c.393) affirmed the CASF as a new universal service program geared towards the deployment of broadband infrastructure in unserved and underserved areas of California. A history of the CASF program and CPUC program developments are described in prior CASF annual reports.¹⁰

III. Reporting Pursuant to Public Utilities Code 914.7(a)

The 2016 CASF Annual Report to the Legislature reports on the statutory requirements in Public Utilities Code section 914.7(a):

- (1) The amount of funds expended from the CASF in the prior year;
- (2) The recipients of funds expended from the CASF in the prior year;
- (3) The geographic regions of the state affected by funds expended from the CASF in the prior year;
- (4) The expected benefits to be derived from the funds expended from the CASF in the prior year;
- (5) Actual broadband adoption levels from the funds expended from the CASF in the prior year;
- (6) The amount of funds expended from the CASF used to match federal funds;

¹⁰ These reports are posted on the CPUC website at:
<http://www.cpuc.ca.gov/PUC/Telco/Information+for+providing+service/CASF/CASFReports.htm>

- (7) An update to the expenditures from the CASF and broadband adoption levels, and an accounting of remaining unserved and underserved households and areas of the state; and
- (8) The status of the CASF balance and the projected amount to be collected in each year through 2020 to fund approved projects.

In 2016, the CPUC continued to make progress toward closing the digital divide in California. The CPUC funded 11 additional infrastructure projects awarding \$33,977,844 to provide broadband access to 18,249 unserved and underserved households combined. The 12 regional Consortia approved in 2016 was awarded \$3,226,376 and continue to advance initiatives aimed at increasing broadband deployment, access and adoption in 40 out of 58 counties in California. Additionally, 189 public housing infrastructure grants were approved by the CPUC affecting 11,752 units, and 43 adoption projects awarding \$6,864,084 to provide digital literacy training to public housing locations with 9,653 residents in 2016. In total, the CPUC adopted 24 CASF resolutions disbursing approximately \$13.5 million in 2016.

A. CASF Funding Expended in 2016

The CASF is funded by a surcharge rate on revenues collected by telecommunications carriers from end-users for intrastate telecommunication services. Per PU Code section 281(d)(3), the CPUC may collect a total of \$315 million to fund the CASF program, where \$100 million was collected prior to January 1, 2011, and \$215 million may be collected on and after January 1, 2011, and continuing through calendar year 2020 in an amount not to exceed \$25 million per year. An amount higher than \$25 million per year may be collected if it does not result in an increase in the total amount of all surcharges collected from telephone customers that year. Following these guidelines, the CPUC assessed the initial surcharge rate based on intrastate telecommunication service revenues projected by the telecommunications carriers. Each year thereafter, the CPUC reassessed the revenue requirement taking into consideration the variance between projected and actual revenues, and modified the surcharge rate, as appropriate. Table 3, below, summarizes

surcharge collections and other revenues CASF received from inception of the program through December 31, 2016, as well as the applicable surcharge rates for the collection periods.

Table 3. CASF Revenue*
2008 - 2016

	Surcharge Revenues	Other Revenues **	Total Revenues	Surcharge Rate / Effective Date until changed	
FY 08-09	\$79,017,271	\$350,967	\$79,368,238	0.25%	1/1/2008
FY 09-10	\$36,284,686	\$657,998	\$36,942,684	0.00%	1/1/2010
FY 10-11	\$230,528	\$526,221	\$756,749		
FY 11-12	\$11,000,027	\$157,400	\$11,157,427	0.14%	11/1/2011
FY 12-13	\$23,290,541	\$127,069	\$23,417,610	0.16%	4/1/2013
FY 13-14	\$28,649,903	\$892,064	\$29,541,967	0.46%	4/1/2014
FY 14-15	\$65,609,157	\$315,686	\$65,924,843		
FY 15-16	\$56,326,670	\$823,272	\$57,149,942		
FY 16-17	\$17,615,980	\$332,718	\$17,948,698	0.00%	12/1/2016
(as of Dec 2015)					
Total	\$318,024,761¹¹	\$4,183,397	\$322,208,157		
* Data are based on CALSTARS Q24 and Q26 FY year-end reports and December month-end reports.					
** Other Revenues include investment income, loan repayment and interest from loan.					

B. CASF Expenditures and Fund Condition

As of December 31, 2016, CASF had a fund balance of approximately \$150 million. Table 3(a), below, depicts CASF revenues, expenditures and fund balance as of December 31, 2016.

¹¹ The CPUC over-collected \$3,024,761 over \$315 million due to reporting of revenue between two accounting systems and difficulty in collecting the exact amount of the surcharge.

Table 3(a). CASF Revenue and Expenditures

1	Revenues	2008-Dec 2015	2016	Total as of 12/31/16
2	Regulatory / Delinquent Fees	\$264,007,542	\$54,017,219	\$318,024,761
3	Investment Income	\$3,156,808	\$1,002,082	\$4,158,890
4	Loan repayment and Interest	\$15,595	\$8,911	\$24,506
5	Total Revenues (Sum of Lines 2-4)	\$267,179,945	\$55,028,212	\$322,208,157
6				
7	Disbursements *			
8	Infrastructure Grant - Local Assistance	\$59,227,695	\$7,401,482	\$66,629,176
9	Infrastructure Grant - State Operations	\$9,937,831	\$3,122,713	\$10,060,544
10	Sub-Total	\$66,165,526	\$10,524,194	\$76,689,720
11	Infrastructure Loan - Local Assistance	\$330,802	\$1,913	\$332,715
12	Infrastructure Loan - State Operations	\$453,501	\$264,898	\$718,399
13	Sub-Total	\$784,303	\$266,811	\$1,051,114
14	Consortia - Local Assistance	\$7,923,787	\$687,378	\$8,611,165
15	Consortia - State Operations	\$676,103	\$116,780	\$792,883
16	Sub-Total	\$8,599,890	\$804,158	\$9,404,048
17	Public Housing - Local Assistance	\$139,110	\$1,799,802	\$1,938,912
18	Public Housing - State Operations	\$320,999	\$132,872	\$453,871
19	Sub-Total	\$460,109	\$1,932,674	\$2,392,783
20				
21	Total Disbursements (Sum of Lines 10,13,16,19)	\$76,009,828	\$13,527,837	\$89,537,665
22				
23	Available Funds (Line 5 less Line 21)	\$191,170,117	\$41,500,375	\$232,670,492
24	Outstanding Encumbrances as of Dec 31, 2016			\$82,244,472
25	Fund Balance as of 12/31/2016 (Line 23 less Line 24)			\$150,222,020

* Data are based on CALSTARS Q16 FY year-end reports and December month-end reports. State Operations for each account include pro-rata and fund adjustment allocated based on the account's approved budget.

C. Recipients of CASF Funds and Regions Affected in 2016

PU Code sections 914.7(a)(2) and (3) require the CPUC to report on the recipients of funds and the geographic regions of the state affected by funds expended from the CASF in the prior year.

1. Infrastructure Grant and Loan Account Distributions

Table 4, below, lists approved CASF infrastructure projects, recipients, grant and loan awards and payments for the 58 projects as of December 2016, by county. In 2016, total awards from the CASF Infrastructure Grant and Loan Accounts amounted to \$33.9 million for eleven projects potentially benefitting

**CA SF Infrastructure
Grant and Loan
awards through 2016
totaled \$153.6 million**

18,249 households.¹² In calendar year 2016, grantee payments totaled \$7.9 million.¹³ Cumulatively from 2008 through 2016, infrastructure grant and loan awards totaled \$152.9 million for 58 projects. Out of the 58 projects that have been awarded CASF infrastructure grants, to date, 33 projects have been completed and 1 project partially completed. Information about households connected, subscribed and potentially connected is described in Section D, pages 25 through 29. Of note is that some projects have been completed with total costs under budget, as the program only reimburses costs incurred to complete the project. Additionally, approved, pending, denied, withdrawn and rescinded projects and details about each project including, applicant, location, amount, and households is contained in Attachments A-1 through A-4.

¹² Attachment A-1 “Approved CASF Infrastructure Projects” identifies unserved and underserved households by project.

¹³ There were no loan payments in 2015.

Table 4. CASF Infrastructure Grant and Loan Distributions
(2009 through 2016)¹⁴

Projects Approved, Not Complete								
Completed Projects								
† indicates Middle Mile Projects								
Item #	Recipient	Project Name	County	Approval Date	Grant Award	2016 Payments	Completion Date	Total Payment a/o 12/31/2016
1	Anza Electric Cooperative, Inc.	Connect Anza	Riverside	12/17/2015	\$2,662,450	\$1,075,136	On-going	\$1,075,136
Total Anza Electric					\$2,662,450	\$1,075,136		\$1,075,136
2	AT&T	Alta/Blue Canyon	Nevada/Placer	12/20/2009	\$56,628	\$0	5/27/11	\$56,628
3	AT&T	Blanchard	Mariposa	11/21/2008	\$35,816	\$0	5/27/11	\$24,963
4	AT&T	Comptche	Mendocino	2/20/2009	\$18,392	\$0	5/27/11	\$9,364
5	AT&T	Grenada	Siskiyou	11/21/2008	\$57,596	\$0	5/27/11	\$20,150
6	AT&T	Hopland	Mendocino	1/21/2008	\$61,952	\$0	5/27/11	\$22,306
7	AT&T	Mt. Wilson	Los Angeles	11/21/2008	\$2,420	\$0	5/27/11	\$859
8	AT&T	Warner Springs	San Diego	11/20/2009	\$93,896	\$0	5/27/11	\$43,985
9	AT&T	Lodi	San Joaquin	3/12/2009	\$137,416	\$0	12/1/10	\$45,541
10	AT&T	Clovis	Fresno	4/16/2009	\$36,393	\$0	6/1/12	\$36,393
11	AT&T	Easton	Fresno	3/12/2009	\$49,869	\$0	6/1/12	\$36,354
Total AT&T					\$550,378	\$0		\$296,543
12	Audeamus	Tranquility and West Fresno	Fresno County	5/6/2010	\$1,154,496	\$0	11/21/11	\$1,154,494
Total Audeamus					\$1,154,496	\$0		\$1,154,494
13	Bright Fiber Network, Inc.	Bright Fiber	Nevada	12/3/2015	\$16,156,323	\$0	On-going	\$0
Total Bright Fiber Network, Inc.					\$16,156,323	\$0		\$0
14	Calaveras Telephone Company	Poker Flat Project	Calaveras	7/29/2010	\$640,698	\$179,423	7/7/16	\$527,676
Total Calaveras Telephone Company					\$640,698	\$179,423		\$527,676
15	Cal.Net	El Dorado North	El Dorado	1/14/2016	\$1,139,755	\$0	On-going	\$0
16	Cal.net	El Dorado South	El Dorado	6/23/2016	\$1,256,524	\$0	On-going	\$0
17	Cal.net	Amador Calaveras and Alpine	Amador Calaveras Alpine	11/15/2016	\$2,862,388	\$0	On-going	\$0
18	Cal.net, Inc.	Tuolumne Mariposa	Tuolmne & Mariposa	12/15/2016	\$3,608,224	\$0	On-going	\$0
Total Cal.net					\$8,866,891	\$0		\$0

¹⁴ Project name, location and grant/loan awarded sourced from authorizing CPUC resolutions. See <http://www.cpuc.ca.gov/General.aspx?id=1057>. Payment information captured when payment made and validated with CALSTARS' fiscal reports. *The total payment to the CVIN/CENIC project was cut by \$0.36 million due to a change in the build-out.

Item #	Recipient	Project Name	County	Approval Date	Grant Award	2016 Payments	Completion Date	Total Payment a/o 12/31/2016
19	CVIN LLC*	†Central Valley Independent Network, LLC middle mile fiber-optic network infrastructure	Multiple	12/03/09	\$6,659,967	\$0	5/31/14	\$6,312,983
Total CVIN LLC					\$6,659,967	\$0		\$6,312,983
20	Foresthill Telephone Company	Big Dipper	Placer	10/03/2013	\$117,000	\$29,250	7/11/16	\$117,000
Total Foresthill Telephone Company					\$117,000	\$29,250		\$117,000
21	Frontier, Citizens Telecom. of California, Inc.	Birds Landing	Solano	3/12/2009	\$100,444	\$0	3/10/10	\$99,130
22	Citizens Telecom. of California, Inc.	Livingston	Merced	3/12/2009	\$62,000	\$0	11/15/09	\$39,555
23	Citizens Telecom. of California, Inc.	Prattville	Lake Almanor, Plumas	11/21/2008	\$41,192	\$9,923	6/29/16	\$9,923
24	Citizens Telecom. of California, Inc.	Shingletown	Shasta	9/29/2016	\$545,690	\$0	On-going	\$0
25	Citizens Telecom. of California, Inc.	† Petrolia	Humboldt	7/23/2015	\$202,557	\$202,557	2/3/16	\$202,557
26	Frontier Comm. of the West Coast	Del Norte	Del Norte	9/22/2011	\$68,168	\$0	1/21/16	\$0
27	Frontier Comm. of the Southwest	Alpine	Alpine	9/22/2011	\$95,919	\$0	1/21/16	\$0
28	Frontier Comm. of the Southwest	Havasu Palms and Black Meadow	San Bernardino	6/10/2011	\$168,171	\$0	Completed	\$0
Total Frontier Communications Affiliates					\$1,284,141	\$212,480		\$351,166
29	Happy Valley Tele. Co.	Olinda	Shasta	10/03/2013	\$1,833,689	\$0	On-going	\$0
Total Happy Valley Telephone Co					\$1,833,689	\$0		\$0
30	Inyo Networks	Nicasio	Western Marin Co	7/14/2016	\$1,491,078	\$0	On-going	\$0

Item #	Recipient	Project Name	County	Approval Date	Grant Award	2016 Payments	Completion Date	Total Payment a/o 12/31/2016
31	California Broadband Cooperative (Inyo Networks)	‡ Digital 395	Mono, Inyo and Eastern Kern Co's, No. Eastern Sn Bernardino	12/3/2009	\$29,223,432	\$69,333	8/31/14	\$26,824,274
Total Inyo Networks					\$30,714,510	\$69,333		\$26,824,274
32	IP Networks	‡ Hwy 36 Humboldt	Humboldt Trinity	11/20/2009	\$5,753,240	\$0	1/2/12	\$5,753,240
Total IP Networks					\$5,753,240	\$0		\$5,753,241
33	Karuk Tribe	Klamath River Rural Broadband Initiative	Humboldt	10/17/2013	\$6,602,422	\$0	On-going	\$0
Total Karuk Tribe					\$6,602,422	\$0		\$0
34	MCC Telephony	Kernville Teleconnect	Kern	9/9/2010	\$285,992	\$0	On-going	\$0
Total MCC Telephony					\$285,992	\$0		\$0
35	Pinnacles Telephone Company	Pinnacles Monument	San Benito	10/31/2013	\$195,299	\$0	12/4/14	\$180,277
Total Pinnacles Telephone					\$195,299	\$0		\$180,277
36	Plumas Sierra Telecom	‡ Plumas-Sierra Telecom middle-mile	Plumas, Lassen and Sierra	2/25/2010	\$1,721,280	\$0	3/11/14	\$1,721,280
Total Plumas Sierra Telecom.					\$1,721,280	\$0		\$1,721,280
37	Ponderosa Cablevision	Auberry project	Fresno	11/20/2009	\$1,154,780	\$0	5/19/14	\$1,154,780
38	Ponderosa Telephone	Big Creek	Fresno	10/31/2013	\$898,574	\$0	On-going	\$0
39	Ponderosa Telephone	Cressman	Fresno	4/10/2014	\$1,027,380	\$0	On-going	\$0
40	Ponderosa Telephone	Beasore - Central Camp	Medara	12/19/2013	\$1,755,042	\$0	On-going	\$0
Total Ponderosa Telephone Affil.					\$4,835,776	\$0		\$1,154,780
41	Race Telecom	Mojave Air and Space Port Project	Kern	6/24/2010	\$506,199	\$0	11/1/12	\$494,419
42	Race Telecom	Boron	Kern	12/19/2013	\$3,426,357	\$187,439	3/31/15	\$2,880,819
43	Race Telecom	Kern County High Desert	Kern	10/17/2013	\$12,583,343	\$0	4/1/15	\$9,785,805
44	Race Telecom	Mono County Underserved	Mono	6/26/2014	\$4,650,593	\$856,330	On-going	\$2,995,124
45	Race Telecom	Gigafly Backus	Kern	11/20/2009	\$2,239,991	\$1,707,761	12/27/16	\$1,707,761
46	Race Telecom	Five Mining Com	Kern	1/14/2016	\$2,037,721	\$0	On-going	\$0
47	Race Telecom	Gigafly Mono	Kern	1/28/2016	\$6,580,007	\$0	On-going	\$0
48	Race Telecom	Gigafly Occidental	Occidental	8/18/2016	\$7,687,016	\$0	On-going	\$0
49	Race Telecom	Gigafly North 395	Kern	12/1/2016	\$3,124,490	\$0	On-going	\$0

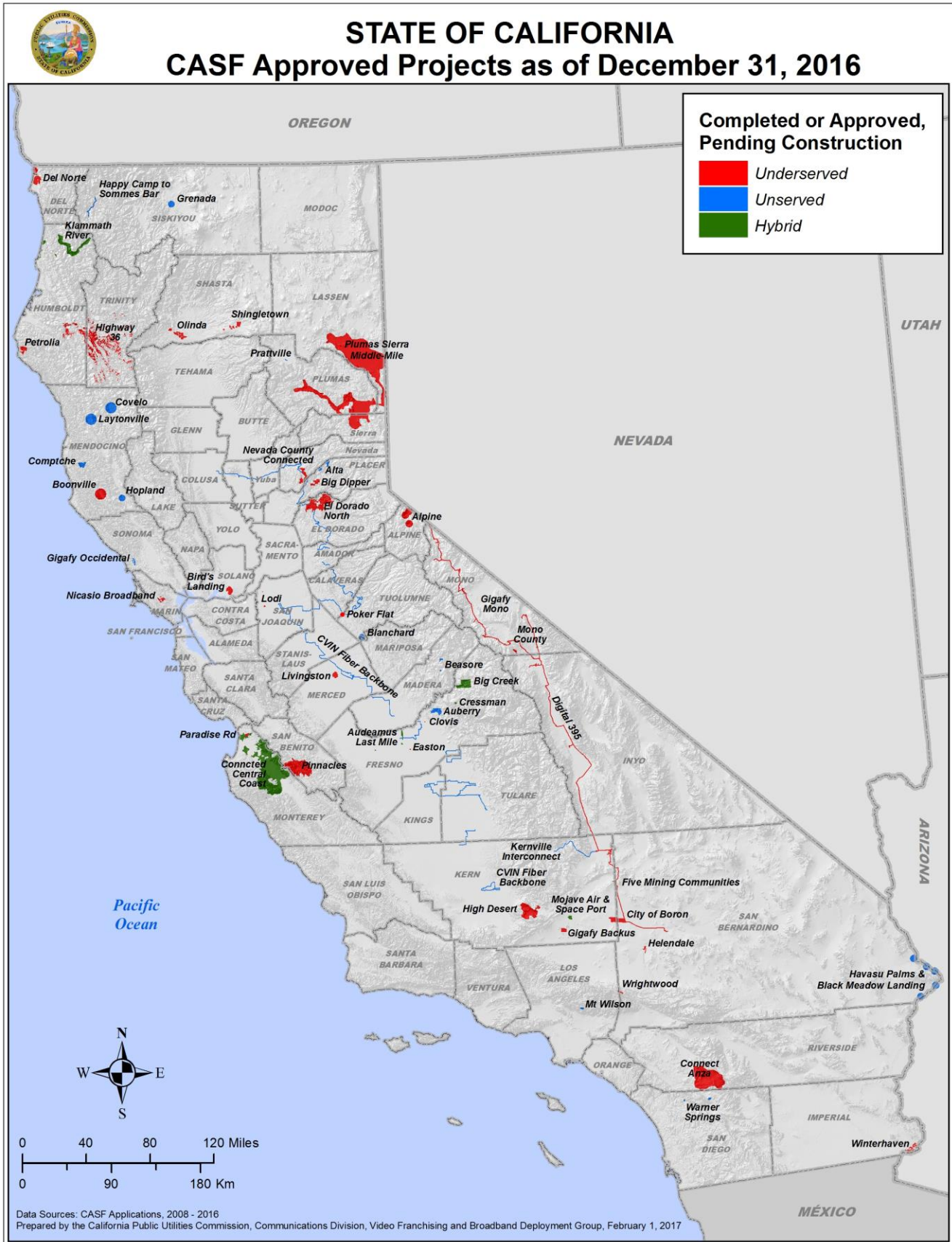
Item #	Recipient	Project Name	County	Approval Date	Grant Award	2016 Payments	Completion Date	Total Payment a/o 12/31/2016
Total Race Telecom					\$42,835,717	\$2,751,531		\$17,863,928
50	Sunesys, LLC	‡ Connected Central Coast	Santa Cruz and – Monterrey	4/10/2014	\$10,640,000	\$1,539,106	On-going	\$1,539,106
Total Sunesys					\$10,640,000	\$1,539,106		\$1,539,106
51	Surfnet Comm.	Paradise Road	Monterrey	4/10/2014	\$177,954	\$0	On-going	\$0
Total Surfnet Comm.					\$177,954	\$0		\$0
52	Siskiyou Telephone	Happy Camp	Siskiyou	12/15/2016	\$3,645,085	\$0	On-going	\$0
Total Siskiyou					\$3,645,085	\$0		\$0
53	Ultimate Internet Access	Helendale	San Bernardino	5/27/2015	\$1,385,825	\$1,085,285	On-going	\$1,085,285
54	Ultimate Internet Access	Wrightwood	San Bernardino, Los Angeles	5/27/2015	\$1,937,380	\$625,576	On-going	\$625,576
Total Ultimate Internet Access					\$3,323,205	\$1,710,862		\$1,710,862
55 & 56	Willits Online	Covelo & Laytonville	Mendocino	3/12/2009	\$108,000	\$0	12/15/10	\$102,025
57	Willits Online	Boonville	Mendocino	10/31/2013	\$122,931	\$30,750	12/1/15	\$163,629
Total Willits Online					\$230,931	\$30,750		\$234,903
58	Winterhaven Telephone Co (TDS Telecom)	Winterhaven	Imperial	10/03/2013	\$2,063,967	\$386,999	On-going	\$386,999
Total Winterhaven					\$2,063,967	\$386,999		\$386,999
Grand Total					\$152,951,412	\$7,984,870		\$67,204,648



United States Post Office in Wrightwood, CA, project funded by CASF

Map 1, below, depicts the geographic location of the 58 CASF infrastructure grant awarded since program inception through 2016, excluding the 29 rescinded grants listed in Attachment A-4. CD notes, that the underserved, unserved and hybrid (combination of unserved and underserved) grants are distributed throughout California, though there is not a project in every county. Attachment A-1 identifies the number of unserved and underserved households potentially served by each project.

Map 1. Approved CASF Infrastructure Projects in California



2. Consortia Grants

The Consortia Grant Account has three grant cycles in years 2011, 2013 and 2016. Of the \$8,873,476 approved grants from the prior rounds, a total disbursement of \$8,523,106 million¹⁵ has been paid. In addition, CD hosted three Regional Consortia Learning Community Summits and reimbursed Consortia a total of \$62,460 for participating in these summits.

AB 1262 (Statutes 2015, Chapter 242) redirected \$5 million from the CASF Revolving Loan Account to the Consortia Grant Account and established the funding for the 2016 Grants Cycle. The 2016 Grants Cycle funds consortia activities ranging from one year to five years. Of the \$3,226,376 approved grants, a total disbursement of \$25,598 has been paid. There are five applications remaining pending review requesting \$1,442,808.¹⁶

Table 5, identifies the grant recipients, the amount of grants approved, and the CPUC resolutions approving the grants. Map 2, illustrates the distribution of the 17 regional consortia representation by county (geographic region) within California. The map shows that four of 58 counties are not represented by a regional consortium. They are San Francisco, San Mateo, and Santa Clara and Orange counties.

¹⁵ In 2015, the State Controller's Office (SCO) conducted an audit of California One Million New Internet Users (NIU) to determine whether reimbursement claims were in compliance with conditions of the grant. Based on the audit report (ftp://ftp.cpuc.ca.gov/Telco/CASF/Consortia/20151109_NIU_Final_Audit_Report.pdf), CD issued a letter to NIU on April 18, 2016 demanding NIU refund of \$82,381.

¹⁶ Including a late filed consortia application submitted after the deadline.

Table 5. Consortia Grant Awards and Payments (As of 12/31/2016)¹⁷

	Name of Consortium	Approved Amount	Resolution/ Approval Date	Approved Amount	Resolution/ Approval Date
1	California's One Million New Internet User Coalition	\$450,000	T-17355 2/16/2012	--	--
2	Broadband Consortium of the Pacific Coast	\$300,000	T-17445 6/12/2014	\$250,000	T-17550 1/19/2017
3	Central Coast Broadband Consortium	\$450,000	T-17349 12/2/2011	\$264,500	T-17529 8/18/2016
4	Central Sierra Connect Consortium	\$450,000	T-17355 2/16/2012	\$249,000	T-17544 12/1/2016
5	Connected Capital Area Broadband Consortium	\$448,301	T-17355 2/16/2012	\$298,750	T-17538 11/10/2016
6	East Bay Broadband Consortium	\$450,000	T-17349 12/2/2011	\$272,160	T-17529 8/18/2016
7	Eastern Sierra Connect Consortium	\$450,000	T-17355 2/16/2012	\$126,700	T-17550 1/19/2017
8	Gold Country Broadband Consortium	\$450,000	T-17355 2/16/2012	\$298,750	T-17538 11/10/2016
9	Inland Empire Broadband Consortium	\$450,000	T-17355 2/16/2012	\$300,000	T-17538 11/10/2016
10	Inyo-Mono Broadband Consortium	--	--	\$105,216	T-17537 10/27/2016
11	Los Angeles County Regional Broadband Consortium	\$2,310,000	T-17349 12/2/2011	\$600,000	T-17544 12/1/2016
12	North Bay/North Coast Broadband Consortium	\$250,000	T-17445 6/12/2014	\$250,000	T-17544 12/1/2016
13	Northeast California Connects Consortium	\$449,991	T-17349 12/2/2011	\$289,343	T-17550 1/19/2017
14	Redwood Coast Connect Consortium	\$450,000	T-17349 12/2/2011	\$208,000	T-17537 10/27/2016
15	San Diego Imperial Regional Broadband Consortium	\$450,000	T-17355 2/16/2012	--	--
16	San Joaquin Valley Regional Broadband Consortium	\$450,000	T-17349 12/2/2011	\$180,000	T-17537 10/27/2016
17	Tahoe Basin Projects	\$167,000	T-17440 5/15/2014	\$200,000	T-17529 8/18/2016
18	Upstate California Connect Consortium	\$448,184	T-17349 12/2/2011	\$267,445	T-17550 1/19/2017
	Total	\$8,873,476		\$3,226,376	

¹⁷ Payment information recorded when payments made and verified with CALSTARS' fiscal reports.

Map 2. Approved CASF Consortia



3. Public Housing Account Distributions

Public Housing Account distributions began in January, 2015. As set out in Assembly Bill 1299, funds not distributed by the end of December, 2016, were to be transferred back to other CASF accounts.¹⁸ In 2016, the Legislature passed and the Governor signed SB 745 (effective January 1, 2017).¹⁹ Among the specific changes made by SB 745 is the extension of the date by which remaining funds from the Public Housing Account shall be transferred back to other CASF Accounts from December 31, 2016 to December 31, 2020. Additionally, SB 745 mandates that only “unserved” housing developments will be eligible for Public Housing Account infrastructure funding. As defined in SB 745, a housing development is “unserved” when at least one housing unit within that housing development is not offered broadband Internet service.²⁰ Since the deployments funded through this program are dependent on the purchase of a digital circuit from an existing ISP which is already servicing the area²¹ and since staff has found that nearly all public housing application locations received by CD to date are “wired” as defined in Decision (D.)14-12-039²² staff concludes that there will be few, if any, eligible locations. The CPUC reopened Rulemaking 12-10-012, on March 2, 2017 to address implementation of the new statute. The CPUC will continue to consider applications filed prior to SB 745 under existing Public Housing Account program rules.²³

¹⁸ AB 1299 (Stats. 2013, Ch. 507)

¹⁹ SB 745 (Stats. 2016, Ch. 710)

²⁰ Pub. Util. Code §§ 281, subds. (h)(3)(A) & (h)(3)(B), as modified by SB 745.

²¹ D.14-12-039, CASF Broadband Public Housing Account Application Requirements and Guidelines, Appendix B, p. B14, which requires the applicant to identify its bandwidth source, either at the MPOE or its wireless equivalent.

²² Resolution T-17515 modified D.14-12-039, Appendix B, and authorizes CD staff to approve applications for wired properties through expedited review. According to D.14-12-039, ‘a unit is “wired” for broadband Internet if it is possible to subscribe to a commercially available broadband Internet service, such as via Digital Subscriber Line (DSL), cable modem or another protocol, utilizing the existing “wired” facilities. A unit having such wiring is considered as having broadband service “available.” An “unwired property” has at least one unit that is not “wired.”’ Staff received only one project proposal that was unwired, as defined above, and this was due to the absence of a local ISP, not an issue with inside wiring. The project brought in a nearby fixed wireless provider to acquire outside broadband capacity.

²³ Resolution T-17514, issued December 6, 2016, page 12, states: “Staff interprets SB 745 amendments as not applicable to applications submitted previous to its effectiveness and therefore intends to consider applications filed prior under existing program rules.”

Table 6, below, summarizes projects submitted, funding requested, projects awarded and payments made for both infrastructure and adoption projects as of December 31, 2016. See Attachment (D) for listings of approved projects with award amounts and payments made.

Table 6. CASF Public Housing Grants Summary (As of 12/31/2016)²⁴

Calendar Year	Grant Type	Number Projects Submitted	Number Unique Applicants	Total Funding Requested	Number Projects Awarded	Total Awarded*	Payments**
2015	Infrastructure	264	47	\$10,709,708.76	86	\$2,133,282.20	\$290,080.94
	Adoption	115	20	\$3,590,804.20	14	\$364,584.00	\$0.00
2016	Infrastructure	229	43	\$8,141,884.40	189	\$5,511,877.97	\$1,542,753.00
	Adoption	60	14	\$2,055,340.30	43	\$1,348,922.00	\$106,088.00
Totals	Infrastructure	493	75	\$18,851,593.16	275	\$7,645,160.17	\$1,832,833.94
	Adoption	175	26	\$5,646,144.50	57	\$1,713,506.00	\$106,088.00
	Total	668	84	\$24,497,737.66	332	\$9,358,666.17	\$1,938,921.94

* See Attachments D and E for listings of approved projects with award amounts and payments made

** Payment information captured when a payment request is issued by CD to the Fiscal Office. Payment by calendar year differs from the Local Assistance Expenditure in Table 4 as Table 4 represents payment at time of issuance from Fiscal. The total payment amount differs slightly from Table 4 due to rounding errors.

4. Public Housing Infrastructure Projects

Of the 493 projects submitted through calendar year 2016, 275 projects were awarded, with an aggregate award amount of \$7,645,160 (with 189 projects awarded in 2016, with an aggregate award amount of \$5,511,878). Sixty infrastructure projects were completed in 2016.²⁵ A total aggregate of \$1,832,834 in payments were made to projects either completed, or partially complete, with \$1,542,753 paid out in 2016.

The CPUC authorized CD staff to approve applications through expedited review that meet all of the expedited review criteria.²⁶ Where an application does not meet the above expedited review criteria, it may still be considered for a grant but it must go through the CPUC Resolution approval process. Of the total 275 projects approved, 52 were approved through CPUC Resolutions, and the remaining 223 were approved via the expedited review process.

²⁴ Local assistance expenditure/encumbrance information captured when expenditure/encumbrance made and validated with CALSTARS fiscal reports.

²⁵ Projects may be built by end of calendar year 2016, but completion report and full payment made in 2017.

²⁶ D.14-12-039, Appendix B, p. B13.

Of the 493 infrastructure projects submitted, 80 were challenged by ISPs on grounds that an ISP already provides services at the Publicly Supported Community (PSC).²⁷ In Resolution T-17515, the CPUC denied twelve challenges on the grounds that the reasons stated in the challenges provided were not supported in D.14-12-039 or in PU Code section 281(h).²⁸ Resolution T-17515 further authorized staff to approve projects in buildings that were already “wired” as defined in D.14-12-039.²⁹ Subsequently, on July 1, 2016, CD issued letters to Charter Communications, Cox Communications and Comcast Corporation denying the remaining challenges.³⁰ Charter Communications filed a request for rehearing of Resolution T-17515, which is still pending.³¹ Additionally, Charter Communications filed a request for rehearing of Resolution T-17514. Resolution T-17514 approved grant funding for 35 Public Housing Account infrastructure projects, none of which were challenged by Charter Communications.³² Charter Communications based its request for a rehearing on the claim that they provide service at six locations of projects funded through Resolution T-17514.³³

²⁷ Challenges were presented by Charter Communications (53), Cox Communications (19) and Comcast Corporation (8)

²⁸ Resolution T-17515. (<http://docs.cpuc.ca.gov/SearchRes.aspx?docformat=ALL&DocID=163155772>).

²⁹ Resolution T-17515 modified D.14-12-039, Appendix B, p. B1-B19, delegating to CD staff the authority to approve applications through expedited review for properties that are wired. According to D.14-12-039, “a unit is “wired” for broadband Internet if it is possible to subscribe to a commercially available broadband Internet service, such as via Digital Subscriber Line (DSL), cable modem or another protocol, utilizing the existing “wired” facilities. A unit having such wiring is considered as having broadband service “available.” An “unwired property” has at least one unit that is not “wired.””

³⁰ Remaining challenges to date at the time the letters were issued. Charter Communications submitted additional challenges to projects in the October, 2016, cycle.

³¹ Charter Communications also filed for a Request for Reconsideration of the July 1st letter.

³² Resolution T-17515 denied seven challenges by Cox Communications based on the authority consistent with Resolution T-17514. (<http://docs.cpuc.ca.gov/SearchRes.aspx?docformat=ALL&DocID=170897855>).

³³ Charter Communications did not provide information to support their claim of service, nor did they serve comments related to Resolution T-17514.

5. Public Housing Adoption Projects

Of the 175 projects submitted through calendar year 2016, 57 projects were awarded, with an aggregate award amount of \$1,713,506 (with 43 projects awarded in 2016, with an aggregate award amount of \$1,348,922). A total aggregate of \$106,088 in payments were made to all projects partially completed. All payments were made in 2016.



2 Public Housing Projects in San Francisco, installation of Wi-Fi systems funded by CASF

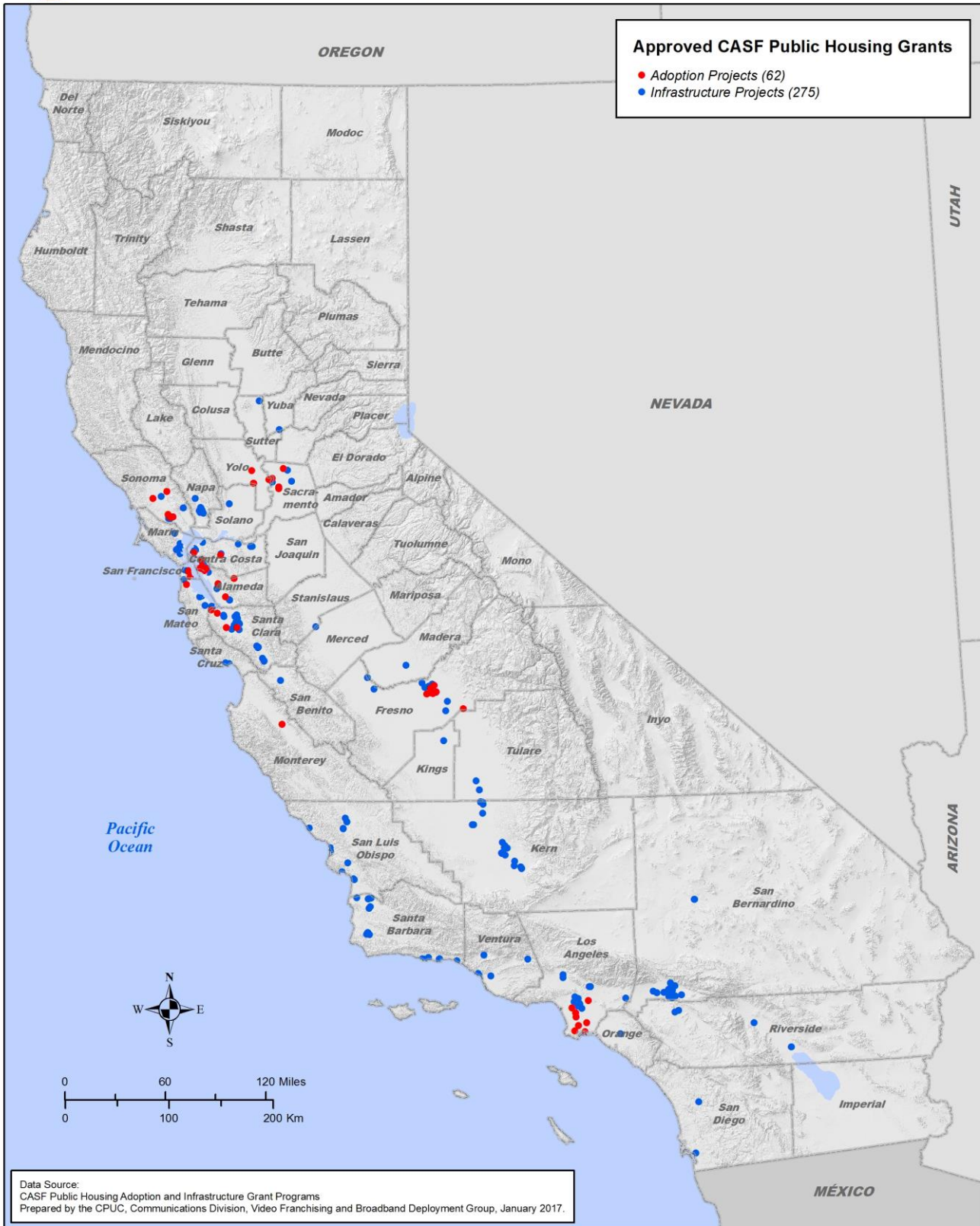
Map 3, below, depicts the distribution of the 275 approved infrastructure and 57 approved adoption projects by geographic region within California. No grants have been awarded north of Yuba and east of the Central Valley due to the lack of applications submitted to the CPUC. Of the approved infrastructure projects, 22 are in rural areas (as designated by the applicant); one of the approved adoption projects is in a rural area.³⁴

³⁴ Of the 493 infrastructure projects submitted, 48 were in rural areas and of the 175 adoption projects three were in rural areas, as designated by the applicant.

Map 3. CASF Grants to Public Housing Broadband Projects



**CASF PUBLIC HOUSING GRANTS
Approved Projects as of December 31, 2016**



D. Expected Benefits and Adoption from 2016 CASF Expenditures

PU Code sections 914.7(a)(4) and (5) require the CPUC to report on the expected benefits to be derived and actual broadband adoption levels from the funds expended from the CASF in the prior year.

1. Infrastructure Grant and Loan Account Benefits

One expected benefit from the CASF program is the potential number of households that will have access to broadband services as a result of CASF program grants. Table 7, below, summarizes the expected infrastructure benefits from the 58 projects approved through 2016. Last mile infrastructure projects include direct connections to identified households for which facilities are to be built. However, unless otherwise identified, middle-mile projects identify only the potential number of households that may be reached as a result of the “middle mile” facilities being built, should last-mile connections be built later.

Table 7. CASF Infrastructure Grant & Loan Account Award Connections and Cost Per Household³⁵

Approved Projects (2008-2016)	Total Infrastructure Awards	Unserved Households	Underserved Households	Total Households	Cost per Household
CASF Last Mile Projects (51.5 Projects)**	\$95,105,716	16,012	41,834	57,846 grant funded connections	\$1,644 per grant funded connection
CASF Middle Mile Projects (6.5 Projects)**	\$57,845,561	59	52,850	52,909* in region but not connected by project	\$1,093 per potential household
All Infrastructure Projects (58 Projects)	\$152,951,277	16,071	94,684	110,755 potential and direct connections	\$1,381 per potential and direct connections

* Middle Mile Projects estimate of the number of households in the region of facilities that would benefit should last mile facilities be built interconnecting with the middle-mile grant facility.

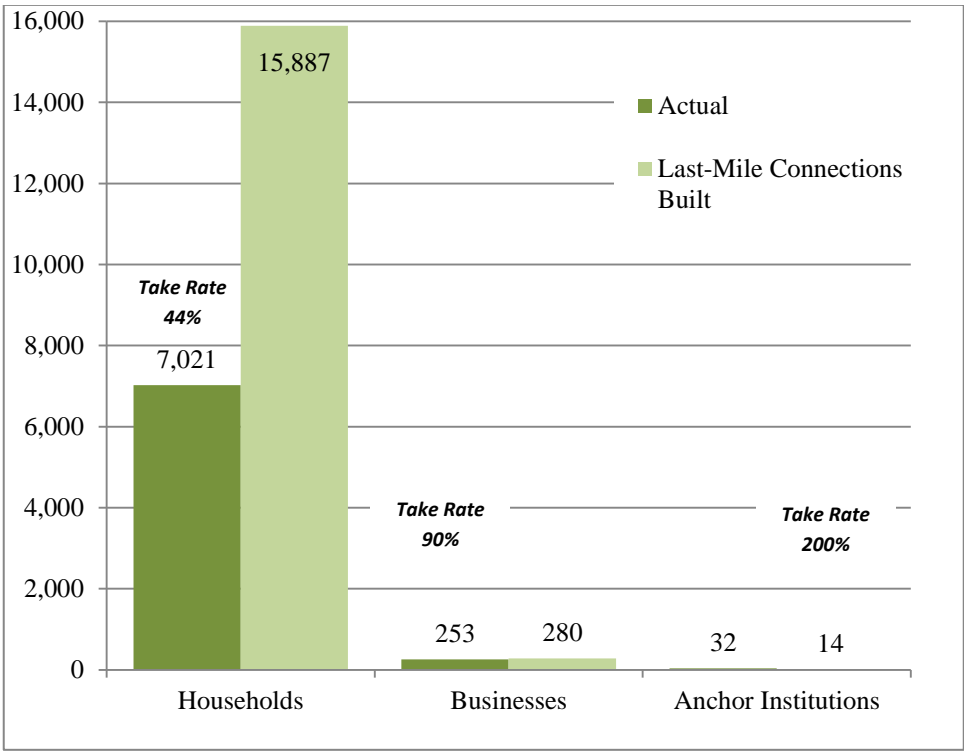
** The 0.5 represents allocation of a hybrid project among its last-mile and middle-mile project components.

³⁵ Household data based on CASF resolutions. See Attachment A-1 “Approved CASF Infrastructure Projects” or <http://www.cpuc.ca.gov/General.aspx?id=1057>.

Of note, is that in 2014, funding for the CVIN, LLC project was reduced by \$346,984 due to lack of fixed-wireless construction, thereby reducing total potential households by 206,764 reflected in this report. Program total of potential households as shown in prior CASF 2014 and 2015 annual reports inadvertently included the CVIN project households.

Another measure of program benefits is the subscribership to broadband as a result of infrastructure projects now delivering service. Chart 1, below, illustrates total subscribership and average take rate of households, businesses, and anchor institutions for completed or partially completed CASF last-mile infrastructure deployment grant projects.³⁶ The average household take rate of 44 percent is low relative to applicants’ estimated take rates.

Chart 1. Subscribers to Partially and Completed Last-Mile Projects
(as of December 31, 2016)



³⁶ The subscriber data reflects responses from 31 grantees for their last-mile projects offering services as of December 31, 2016. Table 8(b) reflects three partially completed and 24 completed projects.

Table 8(a) CASF Infrastructure Grant Subscribership and Cost per Subscriber for Completed and Partially Completed Projects

	Reported Subscribers ³⁷ (Current customers)			Last-mile Connections Built ³⁸			Cost Per Subscribed Last- Mile Household ³⁹
	Households	Businesses	Anchor Institutions	Households	Businesses	Anchor Institutions	
2016 Last-Mile Project Subscribers	7,021	253	32	15,887	280	14	\$2,644

Table 8(a), above, represents estimated subscribership and actual number of subscribers for each project and the cumulative total as reported to the CPUC. This data is used to provide the information in Chart 1 and Table 8(b) and (c). Table 8(a) indicates that the average cost per subscribed household is \$2,644.

Table 8(b) Subscribership by Project

2016 Completed Last-Mile Projects Fully Constructed and Operating					Actual Subscribers			Estimated Potential Subscribers		
	Grantee	Project Name	Completion Date	Project Type	House holds	Business	Anchor Institutions	House-holds	Business	Anchor Institutions
1	Anza Elect	Anza	12/1/17	Last Mile	2,000	20	3			
2	ATT	Alta	5/27/11	Last Mile	213			236		
3	ATT	Blanchard	5/27/11	Last Mile	169			123		
4	ATT	Clovis	6/1/12	Last Mile	76			125		
5	ATT	Comptche	5/27/11	Last Mile	113			97		
6	ATT	Easton	6/1/12	Last Mile	9			9		
7	ATT	Grenada	5/27/11	Last Mile	133			275		
8	ATT	Hopland	5/27/11	Last Mile	240			328		
9	ATT	Lodi	12/1/10	Last Mile	127			35		
10	ATT	Mt. Wilson	5/27/11	Last Mile	12			15		
11	ATT	Warner Springs	5/27/11	Last Mile	125			66		
12	Audeamus	Tranquility & W Fresno	10/1/12	Last Mile	190	24	7	585	34	12
13	CVIN LLC	CVIN	5/31/14	Middle Mile		164	61		56,000	6,296

³⁷ One grantee does not categorize customers by “business” or “anchor institution,” therefore all subscribers are reported as “households” for their two projects.

³⁸ *Id.*

³⁹ Derived from the total of \$18,566,085 cost for the 22 completed last-mile projects that received payments in Table 4 divided by the number of Actual Subscribership for Households, ($\$18,566,085 \div 7,021 = \$2,644$). The cost is the sum of the amount paid out for completed and paid projects; completed but yet to be paid projects; and partially completed projects that have received partial payment, to serve households. This does not include the cost of middle-mile to support last-mile projects.

2016 Completed Last-Mile Projects Fully Constructed and Operating					Actual Subscribers			Estimated Potential Subscribers		
	Grantee	Project Name	Completion Date	Project Type	House holds	Business	Anchor Institutions	House-holds	Business	Anchor Institutions
14	Calaveras	Poker Flat	6/30/15	Last Mile	299			409		
15	Citizens	Bird's Landing	3/10/10	Last Mile	18	7		69		
16	Citizens	Prattville	6/29/16	Last Mile	41	2		171		
17	Citizens	Livingston	11/15/09	Last Mile	71	3		234		
18	Citizens	Del Norte County	1/21/16	Last Mile	73	1	1	313		
19	Citizens	San Bernardino Co.	Complete	Last Mile	256	16	1	3,732		
20	Citizens	Alpine County	1/21/16	Last Mile	372	25	13	381		
21	Citizens*	Petrolia	2/3/16	Middle Mile	98	8	4			
22	Foresthill	Big Dipper Project	7/1/15	Last Mile	18	2		60	6	
23	Inyo Networks CA Broadband Cooperative	Digital 395	8/31/14	Middle Mile			160			251
24	Pinnacles	Pinnacles	12/1/14	Hybrid	23		1	36		2
25	IP Networks	Hwy 36 Humboldt-Trinity Counties	1/2/12	Middle Mile						
26	Ponderosa	Auberry	5/19/14	Last Mile	359			1,043		
27	Ponderosa	Big Creek	10/21/16	Last Mile	32	5		578	9	2
28	Plumas-Sierra	Plumas-Sierra	3/1/14	Middle Mile	567	233	65			
29	Race	Mojave Air & Space	11/1/12	Last Mile		128			231	
30	Race	Kern County Boron	4/1/15	Last Mile	547	15		892		
31	Race	Gigafy Backus	12/27/16	Last Mile	109			253		
32	Race	Mono County		Last Mile	115	1	2	727		
33	Race	Kern Co. High Desert	4/1/15	Last Mile	681	4		4,371		
34 & 35	Willits Online	Boonville	12/1/15	Last Mile	5			120		
36	Willits Online	Covelo/Laytonville	12/1/09	Last Mile	520		1	640		
	Totals			Last Mile	7,021	253	28	15,887	280	14
				Middle Mile	567*	405	290		56,000	6,547
				Hybrid	23	0	1	36		2
	Totals				7,611	658	319	15,923	56,246	6,563

* Petrolia not in middle mile HHS

Hybrid

Middle Mile

Last Mile

Table 8(c), below, illustrates total subscribership for completed or partially completed CASF middle-mile and hybrid (combination of middle and last mile) projects.⁴⁰ The actual middle-mile subscribership will be greater than the reported values because the numbers in Table 8(c) do not include households and businesses in the areas served by last-mile providers who obtain services from these middle-mile projects.

Table 8(c) Broadband Subscribers For CASF Middle-Mile and Hybrid Projects

(as of December 31, 2016)

	Direct Subscribership ⁴¹ (Current Customers)		
	Households	Businesses	Anchor Institutions
2016 Middle-Mile and Hybrid Project Subscribership	590	407	287

2. Consortia Account Benefits

The benefits derived from the approved Consortia receiving funding from the Consortia Grant Account include promoting ubiquitous broadband deployment, access, and adoption in 54 out of 58 counties in California. Each regional Consortium delivers unique activities to the counties they represent that focus on the needs of their communities. These activities are intended to:

- Increase sustainability of broadband infrastructure and projects;
- Promote broadband deployment (availability) for residences in California;
- Promote broadband access and adoption (knowledge of service options and ability to utilize services as well as subscription of services) for residences in California;
- Increase the rate of broadband adoption by facilitating consumer education, outreach, and training;
- Support those community-based stakeholders, especially anchor institutions, who are working to increase deployment, access and adoption.

⁴⁰ The subscriber data reflects responses from three grantees for their middle-mile and hybrid projects offering services as of December 31, 2016.

⁴¹ Subscribership as reported by the three middle-mile/hybrid project grantees does not include indirect subscriber of last-mile ISPs who obtain interconnection and transport services from these projects.

Although consortia activities generally include the items above, all approved consortia have numerous activities and tasks unique to each. Individual consortia reported benefits are in Attachment B.

3. Public Housing Account Benefits

The 189 infrastructure projects approved in 2016 are expected to provide free or low cost broadband connectivity to 11,752 public housing units, at an average cost of \$534 per resident unit⁴². The 43 adoption projects approved in 2016 are expected to provide digital literacy training to public housing locations with 9,653 residents in total, at an average cost of \$242 per resident (the program requirement is that either 75% of the residents are trained, or that the digital literacy classes are provided for a duration of one year after the ramp-up period).

Given that the WiFi (and similar) systems subsidized by CASF grant funding do not typically have a network login; network usage can instead be tracked by the number of individual devices that access the system monthly. Infrastructure project grant recipient data shows the monthly average number of unique devices accessing the network at 300% of the total number of units. The monthly average data aggregate for the amount of data transferred over the network per unique device is 6.3GB (down and up). This information indicates that the deployed systems are well used.

Adoption grant recipients have up to a nine month period in order to ramp-up their adoption project, and up to 12 months thereafter to complete their project. As of end of calendar year 2016, none of the funded projects have been completed. Nine projects are scheduled to complete by June, 2017. Of these nine projects six are on track to train 75% of residents, with the remaining three training a smaller percentage. No conclusions can be drawn as to the effectiveness of the program until projects have completed. However, the submitted project applications indicate plans to train less than 75% of residents. Applicants may expect lower turn-out based on their prior experience.

⁴² Per D.14-12-039 Public Housing Account Infrastructure Grants do not pay for maintenance or operation costs. The grant recipient must commit to charging residents no more than \$20 per month for broadband Internet service. However, almost all grant recipients do not charge residents.

E. Leveraging Program Funds with Federal Funds

PU Code section 914.7(a)(6) requires a report on the amount of funds expended from the CASF used to match federal funds. With an investment of about \$40 million in CASF funds, California has been able to leverage almost \$155 million in federal matching funds from the American Recovery and Reinvestment Act of 2009 (ARRA) for broadband deployment in the State. The six projects that successfully secured ARRA funding have received a total of \$36.79 million from the CASF. Table 9, below, shows the amount of CASF funds expended for ARRA projects.

Table 9. CASF Broadband Infrastructure Projects That Leveraged ARRA Funding

Project Name	Recovery Act Funding (in millions)	CASF Awards (in millions)	CASF Expended (in millions)
Ponderosa Cablevision Auberry Project	\$3.85	\$1.16	\$0.61
Calaveras Poker Flat Project	\$4.09	\$0.64	\$0.35
Digital 395 Middle Mile Project	\$81.15	\$29.22	\$26.66
Plumas Sierra Telecommunications (PST) Middle Mile Project	\$13.77	\$1.72	\$1.72
Audeamus Last Mile Project	\$5.48	\$1.15	\$1.15
Central Valley Independent Network, LLC (CVIN) & the Corporation for Educational Network Initiatives in California (CENIC) Middle Mile Project	\$46.62	\$6.66	\$6.30 ⁴³
Total	\$154.96	\$40.55	\$36.79

F. FCC’s CAF II Program May Not Solve 98% Availability Goal

The FCC has identified 231,835 locations for which it will subsidize the deployment of 10/1 Mbps service in the local exchange territories of AT&T, Frontier, and Consolidated. Under the program, all CAF II eligible locations to be compensated are to be upgraded by 2020.⁴⁴ However, the impact of broadband deployment resulting from the FCC’s CAF II program on California’s

The Connect America Fund (CAF II) provides recurring, time limited subsidies to eligible locations identified by the FCC

⁴³ The total payment to the CVIN/CENIC project was cut by \$0.36 million due to a change in the build-out.

⁴⁴ The determination is based on a cost model methodology. See; FCC “Connect America Cost Model”

<https://transition.fcc.gov/wcb/CAM%20v.4.2%20Methodology.pdf>

98% broadband availability goal is indeterminate at this time for several reasons. First, there is not a one-to-one relationship between “households” used by the CPUC and “locations” used by the FCC for its CAF program. The term “locations” is much broader than “households.” Locations include not only occupied households, which are what the CPUC considers in its broadband analysis, but unoccupied households and businesses as well. Thus, there is no accurate way to know how many, if any, unserved households will gain broadband access, even if CAF-subsidized service is made available to all locations.

An additional complication with quantifying the impact of CAF in California is that the three carriers taking CAF II funds have some flexibility among their assigned census blocks where they may build or upgrade service. Further, not all of the households within each CAF II eligible census block will be upgraded, because not all of the households are considered by the FCC to be “high cost” CAF II eligible.

Finally, under the CAF II program, carriers must deploy speeds meeting or exceeding the FCC’s 10 Mbps downstream/1Mbps upstream benchmark. That speed combination would still be considered “underserved” in California, as it fails the upstream requirement of 1.5 Mbps to be considered “served.”

Table 10, below, shows the number of in CASF-eligible households and CAF II identified locations within unserved and underserved areas. Because it is improbable that all new CAF II deployment is limited to businesses, or that all deployment is limited to households, we have attempted to estimate the impact of the CAF II program assuming that 50% of the deployment is to household locations. We further credited that number to estimate the remaining unserved and underserved households in the state.

Table 10. Impact of CAF II Locations on Broadband Availability

2016	Underserved (by Wireline broadband)	Unservd (by Wireline broadband)
Total CASF Eligible Households	325,955	292,764
CAF II Supported Locations Within CASF Census Blocks*	79,117	129,490
50% of CAF II Supported Locations Within CASF Census Blocks	39,559	64,745

* In addition, 23,182 locations are in 'served' census blocks and 46 are in census blocks with no occupied households.

Sources: Broadband availability data collected and validated by the CPUC as of December 31, 2015. Household data from CA DOF 1/1/2016 estimate. CAF II Supported Locations data from FCC Wireline Competition Bureau, April 2015.

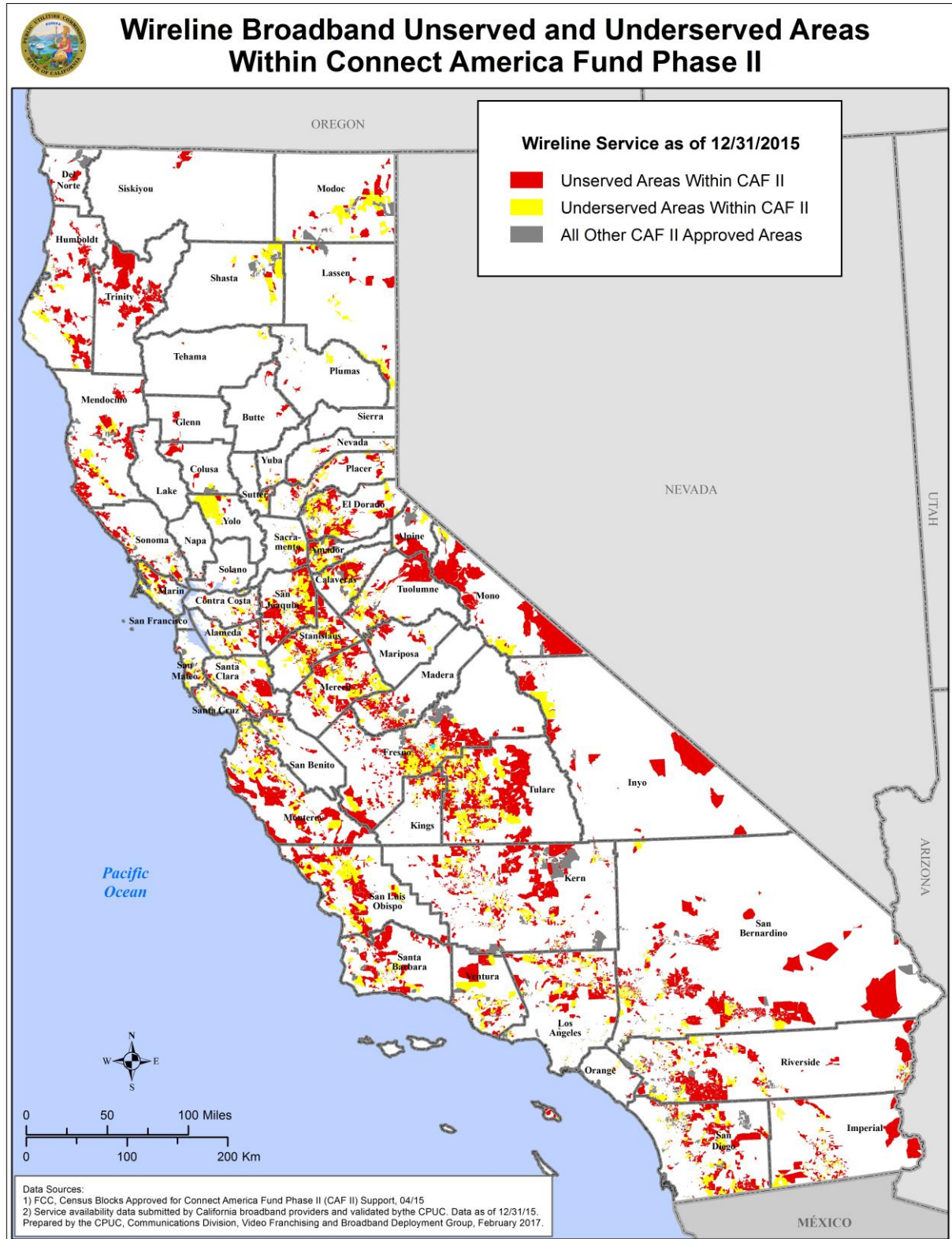
Although CD cannot determine the impact the CAF II program will have on increased availability with any certainty, an estimate, based on applying 50% of eligible locations, shown in Table 11 below, indicates that CAF II will likely improve broadband availability toward the 98% goal. However, the CAF II spending would probably not result in California reaching the 98% goal and the CAF II impact would not be known until after 2020.

Table 11. Estimated Wireline Broadband Availability Post CAF II

2016	Total	Served		Underserved		Unservd	
Based on Households	12,941,948	12,427,533	96.0%	228,019	1.8%	286,396	2.2%

Map 4, below, shows the combined CASF eligible unserved and underserved wireline areas that fall within CAF II eligible census tracts of the collective three carriers. Note that the unserved and underserved areas do not cover entire CAF II eligible census tracts as some parts of the census tracts are unpopulated. The CAF II areas may be viewed on the interactive State Broadband Map as well.

Map 4. Connect America Funding In California (Phase II)



G. Remaining Unserved and Underserved Households in California

1. Broadband Access at Current CPUC Speed Standards

This section of the 2016 CASF Annual Report addresses PU Code section 914.7(a)(7), which requires “an accounting of remaining unserved and underserved households and areas of the state.”

The geographic data in this section illustrates broadband deployment in California for wireline, fixed wireless, and mobile.

The following data presented is validated and adjusted by CD staff to improve accuracy. First, wired and fixed-wireless broadband service provider data is collected from providers and is validated by several means as described on the

CPUC website; “CPUC Broadband Validation Methodology” at

<http://www.cpuc.ca.gov/General.aspx?id=2529>

Second, CD has improved data accuracy over time via the Commission’s CalSPEED testing program as well as via public feedback. The broadband mapping data collection is explained on the CPUC’s website at <http://www.cpuc.ca.gov/General.aspx?id=2540>

The data validation attempts to reduce false representations of broadband availability. However, despite these efforts to improve accuracy, CD recognizes that some availability data error remains. Evaluation of availability of broadband in rural areas at the address level, have greater propensity for error than urban because of their relatively large census block areas. Service providers report a census block as served when at least one customer is served within the block. Thus, project evaluations often require specific testing and analysis of availability via CalSPEED.

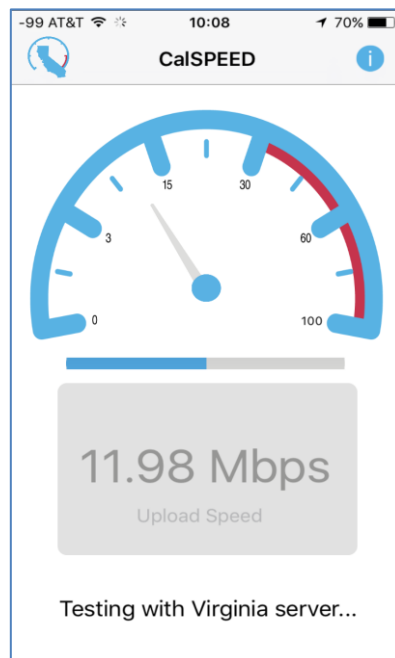
CPUC’s Interactive Broadband Availability Map helps consumers find and report broadband service availability in their area.

<http://www.broadbandmap.ca.gov/>

Consumer feedback can be provided via paper or electronically.

<http://www.cpuc.ca.gov/BroadbandAvailabilityandPublicFeedback/>

As part of CPUC staff’s effort to increase public participation in crowdsourced broadband testing, the CPUC offers CalSPEED on desktop (CalSPEED.org), iPhone, and Android. What distinguishes CalSPEED from other mobile speed testing apps are (1) tests reporting “no available service” are automatically reported the next time the tester re-runs a test having service, (2) tests are done to servers on opposite ends of the continental United States in order to test performance for locally cached versus remotely cached content, (3) results are used to estimate service quality for a variety of applications like voice, video and video, and (4) results are displayed on the California Interactive Broadband Map and are used to validate or invalidate a provider’s service. Additionally, the CPUC has initiated a coordinated fixed broadband testing survey project to assess consumer broadband speed experience.⁴⁵



⁴⁵ Decision 16-12-025, ordering paragraph 4 requires staff to report to the CPUC its findings and recommendations.

The following tables and maps illustrate estimated availability by wireline, fixed-wireless and mobile wireless broadband technologies for the remaining households without broadband access in California at 6 Mbps downstream and 1.5 Mbps upstream or greater.⁴⁶ The presentation reflects data as of December 31, 2015, as submitted to the CPUC and validated by CD to the census block level.

Table 12, below, shows the availability of broadband by wireline technologies to California households. In particular, 95.2 percent of California households (12,323,230) have served speeds available, 2.5 percent of households (325,955) have underserved speeds available, and 2.3 percent of households (292,764) have service so slow, if at all, that they are considered unserved. We note that there is an increase of 0.3 percentage points in served households compared to 2015.

Table 12. Wireline Broadband Availability⁴⁷

As of December 31, 2016

2016	Total	Served Broadband service at least 6 Mbps down and 1.5 Mbps up		Underserved Broadband service slower than 6 Mbps down or 1.5 Mbps up		Unserved Either no service available, or internet access is slower than 768 Kbps down or 200 Kbps up	
		Households	Percentage	Households	Percentage	Households	Percentage
	12,941,948	12,323,230	95.2%	325,955	2.5%	292,764	2.3%

Map 5, depicts the geographic distribution of wireline availability throughout California. Of note is that wireline availability is primarily located in urban areas with relatively large population density in comparison to under and unserved areas in less densely populated, rural areas. Also, large areas of California are depicted as having no households.

⁴⁶ The CPUC broadband availability map separates broadband services into wireline, fixed-wireless, and mobile. Examples of “wireline” technologies include DSL, Cable Modem, and Fiber to the Home. These technologies use wires or cables that make a physical connection from the provider to the user. “Fixed wireless” solutions rely on radio waves at a particular frequency range to make a “point-to-point” connection between the provider and the user at a fixed location. “Mobile” includes cellular technologies such as 2G, 3G, or 4G LTE to provide service to users who can receive a broadband signal while the user is in motion.

⁴⁷ Source: Broadband data collected by CPUC as of December 31, 2014. Household data estimate from California Department of Finance, January 1, 2015.

Map 5. Wireline Broadband Availability in California

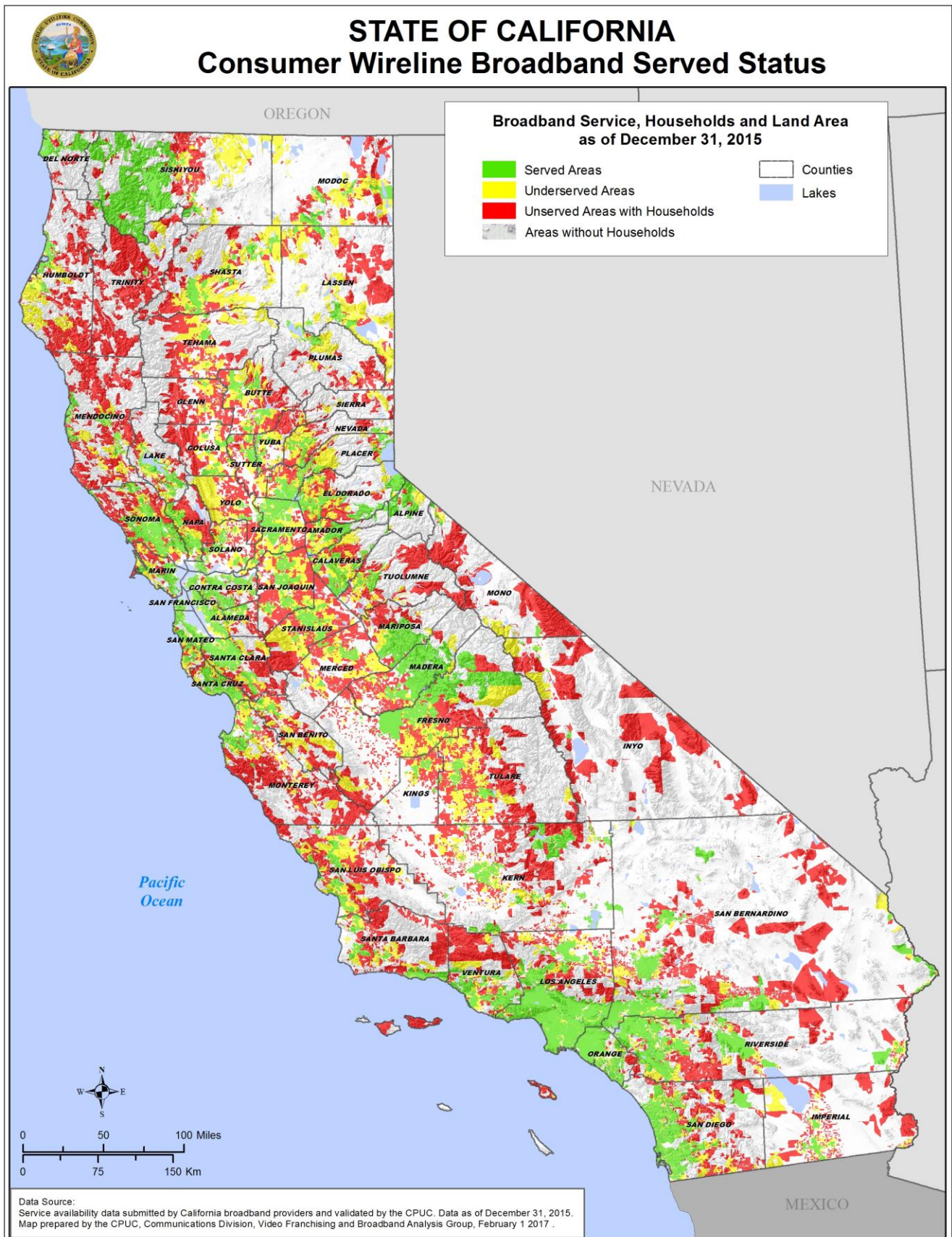


Table 13, below, shows fixed-wireless broadband availability. The percentage of California households served by fixed wireless as of December 31, 2016, is 30.6 percent (3,958,990), which is a 12.6 percentage point increase from the 2015 values.

A key limitation of fixed wireless technology is that in most cases, there must be direct line of sight between the antenna at the consumer's premise and the provider's access point or tower. In many rural parts of California, terrain and foliage makes full fixed wireless coverage difficult, if not nearly impossible. Fixed wireless propagation in such areas is negatively affected by hills as well as the scattering effects of randomly distributed leaves, branches and tree trunks, which can cause attenuation, scattering, diffractions and absorption of fixed wireless radio signals. For this reason, the served and underserved designations for fixed wireless areas are depicted as "partially served" and "partially underserved" respectively. Depending on conditions, such areas "may be" considered grant-eligible. Areas with test reports indicating robust service availability with direct line-of-sight are considered not grant eligible.

Table 13. Fixed Wireless Broadband Availability

As of December 31, 2016

2016	Total	Partially Served		Partially Underserved		Unservd	
		Broadband service of at least 6 Mbps down and 1.5 Mbps up		Broadband service slower than 6 Mbps down or 1.5 Mbps up		Either no service available, or Internet access is slower than 768 Kbps down or 200 Kbps up	
Households	12,941,948	3,958,990	30.6%	168,173	1.3%	8,814,785	68.1%

Map 6, below, shows that fixed wireless availability is primarily in rural areas where wireline is non-existent and is an important component of connectivity in these regions.

Map 6. Fixed-Wireless Broadband Availability in California

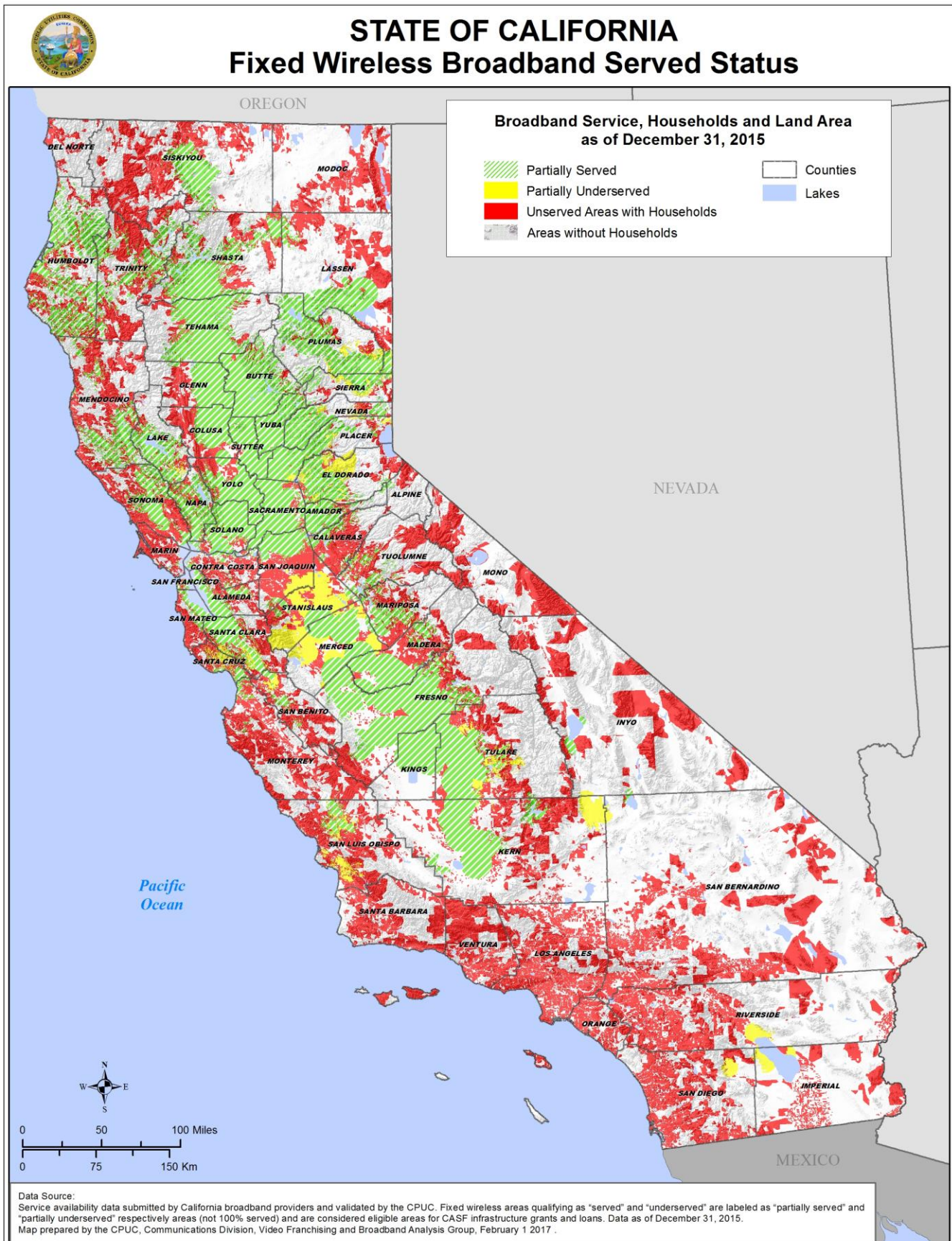


Table 14, below, shows availability utilizing mobile broadband technologies based on the CPUC’s mobile field test CalSPEED program.

Table 14. Mobile Broadband Availability: Mobile Served Estimate⁴⁸

As of December 31, 2016

2016	Total	Served Broadband service at least 6 Mbps down and 1.5 Mbps up		Underserved Broadband service slower than 6 Mbps down or 1.5 Mbps up		Unservd Either no service available, or internet access is slower than 768 Kbps down or 200 Kbps up	
Households	12,941,948	1,006,042	7.8%	11,499,033	88.9%	436,873	3.4%

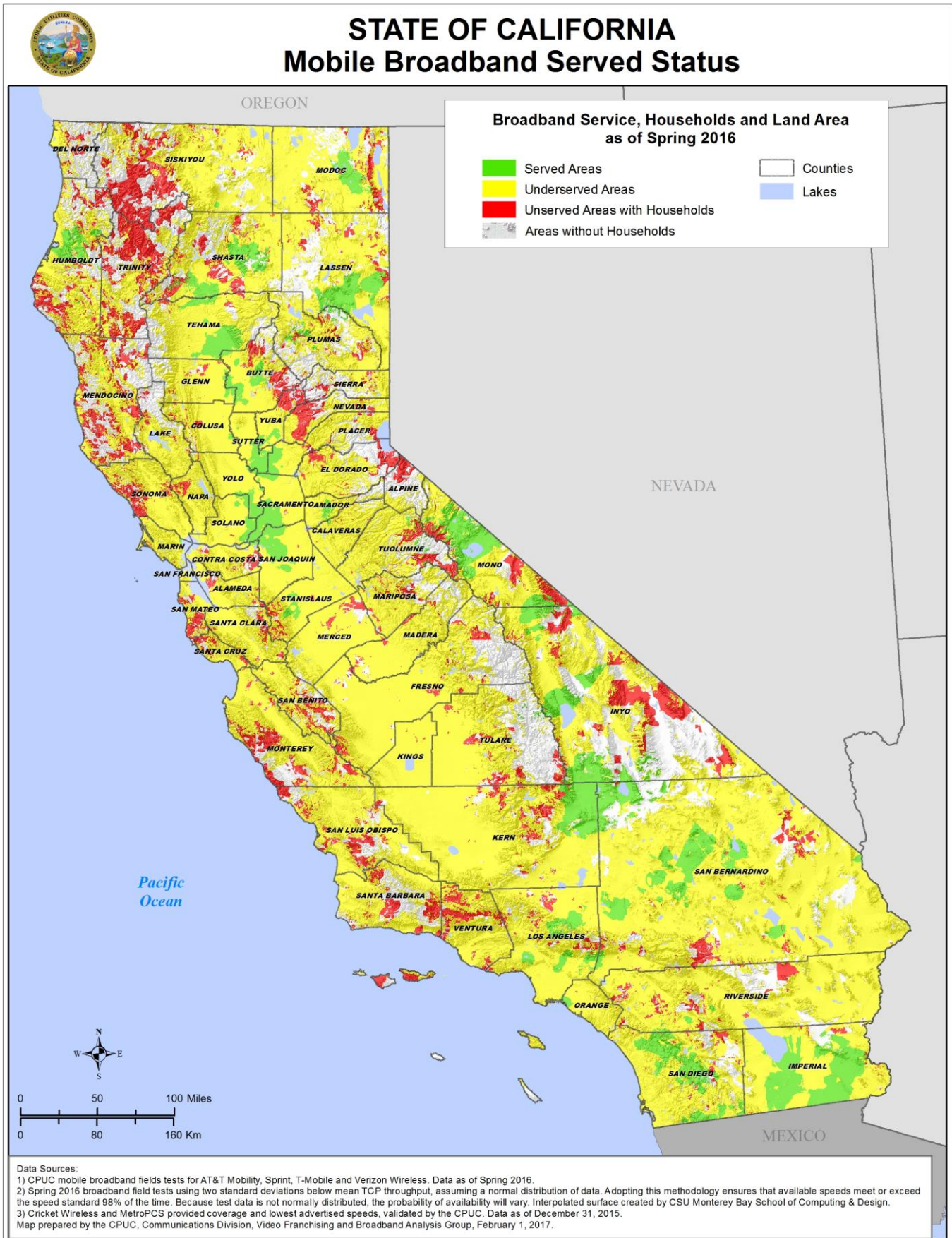
The CPUC has found that average (mean throughput) measured speeds are not representative of a consumer’s actual mobile experience because mobile broadband speeds are highly variable. Instead, CPUC Staff’s analysis quantifies expected speeds at 98 percent probability.⁴⁹

Map 7, below depicts the geographic availability of mobile broadband. Note that the majority of the state is “underserved” by mobile broadband.

⁴⁸ Estimate based on Spring 2016 Field Test data for AT&T Mobility, Sprint, T-Mobile and Verizon Wireless. Data as of December 31, 2016. Mobile testing data and reports are available at <http://www.cpuc.ca.gov/General.aspx?id=1778>

⁴⁹ CPUC Staff has calculated the throughput level represented by two standard deviations below the tested mean, indicating that a consumer will receive service at least that fast at a 98% confidence interval. Assuming a normal distribution of data, adopting a speed standard at two standard deviations below the mean provides that available speeds meet or exceed the speed standard 98% of the time. Because test data is not normally distributed, the actual probability will vary.

Map 7. Mobile Broadband Availability in California



2. Broadband Access at 25 Mbps Downstream and 3 Mbps Upstream

Table 15, below, indicates the availability of wireline broadband to all California households and rural and urban households. Compared to Table 11, which indicates that 5.1% of California households do not have current served speeds, increasing the “served” definition for wireline from 6 Mbps downstream and 1.5 Mbps upstream, to 25 Mbps downstream and 3 Mbps upstream would increase the number of program eligible households in California by 0.9%, or 128,832 households. However, the total number of eligible households under the 25/3 Mbps standard would be 777,936. Using the average cost per household of all CASF approved projects, the total cost to connect unserved households is roughly estimated to be \$1.3 billion.⁵⁰ An alternative estimation is based on the average cost of CASF approved fiber-to-the-home projects, where the total cost to reach the 98% served program goal could sum to \$3.2 billion.⁵¹

Table 15. Households* Served by Wireline Broadband at 25/3 Mbps**
(as of December 31, 2015)

2015	All California	Rural	Urban
Households	12,941,948	680,877	12,261,071
Households Served	12,196,361	254,438	11,941,923
Percentage	94%	37%	97%
Households Underserved & Unserved	745,587	426,439	319,148
Percentage	6%	63%	3%

* CA Department of Finance, January 2016 estimate.

** Served estimates based on the broadband data collected by CPUC as of December 31, 2015.

⁵⁰ Table 8(a) computes average cost per last-mile and middle-mile separately. Because middle-mile does not reach end-user households directly, there is a necessity for last-mile to reach end-user customers. While not all last-mile CASF projects require a subsidized middle-mile project, to assess program costs requires consideration of CASF middle-mile project costs. Therefore, by necessity the averages of both are summed ($\$1,519 + \$175 = \$1,694$) to arrive at an estimate of average cost to serve each household.

⁵¹ The average of 15 CASF approved fiber-to-the-home projects is \$9,442, inclusive of \$175 middle-mile costs. Assuming urban fiber-to-the-home project costs are 20% of rural (and excluding middle-mile), the urban cost per household would be \$1,853. Actual costs would differ and likely be larger due to variables such terrain, environmental review and permitting costs. Total estimated CASF program cost to reach 98% is $\$9,442 \times 297,161 + \$1,853 \times 224,174$; to reach 100% is \$4.9 billion.

Tables 16, below, indicates the availability of mobile broadband to all rural and urban households in California. Compared to Table 13, which indicates that 84% of California households do not have mobile availability at current served speeds, increasing the “served” definition for wireline from 6 Mbps downstream and 1.5 Mbps upstream, to 25 Mbps downstream and 3 Mbps upstream would increase the number of program eligible households in California by 100%, or 12,830,035 households. The effect of this on the CASF program is that mobile could not preclude an area that has no wireline services from being ineligible. Thus, only wireline availability becomes the practical determinant of program eligibility at 25/3 Mbps. However, the effect may be temporary as mobile speeds and service quality improve.

Table 16. Households* Served by Mobile Broadband at 25/3 Mbps**
(as of December 31, 2015)

2015	All California	Rural	Urban
Households	12,941,948	680,877	12,261,071
Households Served	0	0	0
Percentage	0%	0%	0%
Households Underserved & Unserved	12,941,948	680,877	12,261,071
Percentage	100%	100%	100%

* CA Department of Finance, January 2016 estimate.

** Served estimates based on the mobile field testing, interpolated mean minus 2 standard deviation results. CPUC Communications Division, Spring 2016, Field Test Report Data.

3. High Impact Areas

CD staff issued a white paper in February 2017, as part of its efforts to increase broadband deployment and to better identify High Impact areas. CD staff identified thirteen areas containing 34,228 households which staff believes represents the best “bang for the buck” for deploying broadband Internet infrastructure to more California households. In identifying these high impact areas, staff specifically searched for areas with the following;

1. Sufficient potential subscribers to maintain a network
2. Relatively high household density
3. The presence of unserved households
4. The lack of significant competition,
5. The lack of challenging terrain that would drive up deployment costs

CD staff first analyzed household density, creating 46 “areas of interest” comprising groups of census blocks with a household density of higher than 150 households per square mile. CD staff refined this list by removing areas lacking unserved households, areas partially served by fixed wireless, areas where 60 percent or more of households already have Internet service at speeds of 10/1 and areas with challenging terrain.

As part of this effort, CD staff requested public comment on its white paper, with a focus on the methodology used, whether existing Internet service providers already serve the identified areas, if current providers will commit to serve the identified areas or if inadvertently a particular community was overlooked. CD staff is in the process of reviewing public comment input submitted by March 17, 2017, and at the public workshop held on February 28, 2017.

Following final identification of the “high-impact areas,” staff may draft a CPUC resolution for Commission approval that provides specific applications to serve such areas as a “priority review” above other pending projects or out of area projects received. CD staff intends to host further public workshops focused on improving CASF program efficiency, efficacy, and alternatives to reach the goal of providing 98 percent of California households with access to Internet service at served speeds.

H. CASF Fund Balance and Projected Revenues Through 2020

Per PU Code section 281(d)(3), the CPUC collected a total of \$315 million to fund the CASF program; where \$100 million was collected prior to January 1, 2011, and \$215 million was collected on and after January 1, 2011, and continuing through calendar year 2020 in an amount not to exceed \$25 million per year. The CASF surcharge has reached \$315 million and the collection of surcharges has ceased as of December 1, 2016.

Table 17, below, presents the status of the CASF balance and the amount collected in each year through 2020 to fund approved projects, as required in P. U. Code Section 914.7(a)(8).

Table 17. CASF Estimated Surcharge Collection
(As of December 31, 2016)

Calendar Year	Surcharge Rate(a)	Surcharge Collection	Total	Variance (Under collection)	Estimated Running Total
2008-2010	0.25%	\$115 million	\$115 million	\$15 million	\$115 million
2011	0.14%	\$467,496	\$16 million	(\$9 million)	\$116 million
2012	0.14%	\$22 million	\$22 million	(\$3 million)	\$138 million
2013	0.164%	\$22 million	\$22 million	(\$3 million)	\$160 million
2014	0.46% ^b	\$38 million	\$38 million	\$13 million	\$198 million
2015	0.464%	\$58 million	\$58 million	\$33 million	\$256 million
2016	0.464%	\$56 million ^c	\$56 million	\$31 million	\$312 million
2017	0.464% ^d	\$3 million ^c	\$3 million	(\$3 million)	\$315 million
2018	0.0%	\$0 million	\$0 million	-	\$315 million
2019	0.0%	\$0 million	\$0 million	-	\$315 million
2020	0.0%	\$0 million	\$0 million	-	\$315 million
Total			\$315 million		

(a) Surcharge rate changes:

- Set to 0.025% by Decision 07-12-054 (December 20, 2007), effective January 1, 2008
- Set to 0.0% by Resolution T-17248 (December 17, 2009), effective January 1, 2010
- Set to 0.14% by Resolution T-17343 (September 22, 2011), effective November 1, 2011
- Set to 0.164% by Resolution T-17386 (February 20, 2013), effective April 1, 2013
- Set to 0.464% by Resolution T-17434 (February 27, 2014), effective April 1, 2014

(b) Surcharge rate was 0.164% in January to March 2014 and 0.464% thereafter.

(c) Estimated based on surcharge rate and billing base.

(d) Surcharge rate set to 0.0% since \$315M has been collected.

IV. Second Interim Financial and Performance Audit

In 2016, the State Controller's Office (SCO) performed a special purpose financial audit of the CASF from July 1, 2010 through December 31, 2015. This is the second independent interim financial audit of the CASF. The first audit was for the period of January 1, 2008 through June 30, 2010. The conclusion was that the CASF was expended in compliance with PU Code sections 281 and 282, other state laws and CPUC directives. The audit reports are available at

<http://www.cpuc.ca.gov/General.aspx?id=9226>.

V. Attachments

A-1: Approved Infrastructure Projects

A-2: Pending Infrastructure Projects

**A-3: Infrastructure Projects Denied/Withdrawn/Not
Acted Upon**

A-4: Rescinded Infrastructure Projects

B: Consortia Account Benefits

C: Public Housing Infrastructure Grants

D: Public Housing Adoption Grants

E: Served Status by Region and County

Attachment A-1: Approved CASF Infrastructure Projects⁵²
(as of December 31, 2016)

Projects Approved before 2016			Projects Approved in 2016 (11)			Middle-Mile (7)			
	GRANTEE	PROJECT NAME	LOCATION	UN-SERVED HOUSE HOLDS	UNDER-SERVED HOUSE HOLDS	TOTAL POTENTIAL HOUSE HOLDS	GRANT AWARD	FUNDS REQUESTED PER HOUSE HOLD	TYPE
1	Anza Electrical Coop	Connect Anza	Riverside County	0	3,751	3,751	\$2,662,450	\$710	Last-mile
2	AT&T	Alta/Blue Canyon	Nevada/Placer Counties	236	0	236	\$56,628	\$240	Last-mile
3	AT&T	Blanchard	Mariposa	123	0	123	\$35,816	\$291	Last-mile
4	AT&T	Clovis	Fresno	0	125	125	\$36,393	\$291	Last-mile
5	AT&T	Comptche	Mendocino County	97	0	97	\$18,392	\$190	Last-mile
6	AT&T	Easton	Fresno	0	9	9	\$49,869	\$5,541	Last-mile
7	AT&T	Grenada	Siskiyou	275	0	275	\$57,596	\$209	Last-mile
8	AT&T	Hopland	Mendocino	328	0	328	\$61,952	\$189	Last-mile
9	AT&T	Lodi	San Joaquin	0	35	35	\$137,416	\$3,926	Last-mile
10	AT&T	Mount Wilson	Los Angeles	15	0	15	\$2,420	\$161	Last-mile
11	AT&T	Warner Springs	San Diego County	66	0	66	\$93,896	\$1,423	Last-mile
12	Audeamus	Tranquility and West Fresno	Fresno County	234	351	585	\$1,154,496	\$1,973	Last-mile
13	Bright Fiber, Inc.	Bright Fiber Project	Nevada County	0	1,941	1,941	\$16,156,323	\$8,581	Last-mile
14	Calaveras Telephone Company	Poker Flat Project	Calaveras	0	409	409	\$640,698	\$1,566	Last-mile
15	Cal.net, Inc.	El Dorado North Fixed Wireless Broadband	El Dorado County	0	1,537	1,537	\$1,139,755	\$742	Last-mile

⁵² Data based on CASF resolutions, see <http://www.cpuc.ca.gov/General.aspx?id=1057>. D. 12-02-015 defines an area “served” if current broadband providers can provide speeds of at least 6 mbps download and 1.5 mbps upload. An “unserved” area is ‘an area that is not served by any form of wireline or wireless facilities-based broadband, such that Internet connectivity is available only through dial-up service.’ An “underserved” area is “an area where broadband is available, but no wireline or wireless facilities-based provider offers service at advertised speeds of at least 6 mbps download and 1.5 mbps upload.”

	GRANTEE	PROJECT NAME	LOCATION	UNSERVED HOUSE HOLDS	UNDER-SERVED HOUSE HOLDS	TOTAL # OF POTENTIAL HOUSE HOLDS	GRANT AWARD	FUNDS REQUESTED PER HOUSE HOLD	TYPE
16	Cal.net Amador	Amador, Cala, Alp	Ama, Cala, Alp.		4,878	4,878	\$2,862,388	\$587	Last-mile
17	Cal.net, Inc.	Tuolumne Mariposa	Tuolmne & Mariposa Co's		7,711	7,711	\$3,608,224	\$468	Last-mile
18	Cal.net, Inc.	El Dorado South and East Fixed Wireless Broadband	El Dorado County	0	1,350	1,350	\$1,256,524	\$931	Last-mile
19	CVIN LLC*	Central Valley Independent Network, LLC. (CVIN) & the Corporation for Educational Network Initiatives in California (CENIC) middle mile fiber-optics network infrastructure	Amador, Calaveras, Colusa, El Dorado, Fresno, Kings, Kern, Mariposa, Merced, Madera, Nevada, Placer, San Joaquin, Stanislaus, Tuolumne, Tulare, Sutter & Yuba	0	0	0	\$6,659,967	\$0	Middle-mile
20	Foresthill Telephone Company/Sebastian	Big Dipper	Placer County	0	84	84	\$117,000	\$1,393	Last-mile
21	Frontier/Citizens	Birds Landing	Solano	0	69	69	\$100,444	\$1,456	Last-mile
22	Frontier/Citizens	Livingston	Merced	0	308	308	\$62,000	\$201	Last-mile
23	Frontier/Citizens	Petrolia	Humboldt	0	104	104	\$202,557	\$1,948	Middle-mile
24	Frontier/Citizens	Prattville	Lake Almanor, Plumas	171	0	171	\$41,192	\$241	Last-mile
25	Frontier/Citizens	Shingletown	Shasta County		1,017	1,017	\$545,690	\$537	Last-mile
	CVIN LLC* \$6,659,967 - \$346,984(reduced) = \$6,312,983								

	GRANTEE	PROJECT NAME	LOCATION	UNSERVED HOUSE HOLDS	UNDERSERVED HOUSE HOLDS	TOTAL # OF POTENTIAL HOUSE HOLDS	GRANT AWARD	FUNDS REQUESTED PER HOUSE HOLD	TYPE
26	Frontier Communications of the Southwest, Inc.	Alpine	Markleeville , Woodfords, Paynesville, Fredericksbu rge and surrounding areas		623	623	\$95,919	\$154	Last-mile
27	Frontier Communications of the Southwest, Inc.	San Bernardino Havasu Palms Black Meadow	San Bernardino County	3,732	0	3,732	\$168,171	\$45	Last-mile
28	Frontier Communications of the West Coast	Del Norte	Ship Ashore and Fort Dick areas of the Smith River exchange ; Pacific Shores area of the Crescent City exchange	0	645	645	\$68,168	\$106	Last-mile
29	Happy Valley** Telephone Company (TDS Telecom)	Olinda	Shasta County	0	1,908	1,908	\$1,833,689	\$961	Last-mile
30	Inyo Networks California Broadband Cooperative	Digital 395 Middle Mile	Mono, Inyo and Eastern Kern Counties, North Eastern San Bernardino	0	28,127	28,127	\$29,223,432	\$1,039	Middle-mile
31	Inyo Networks California Broadband Cooperative	Nicasio Broadband	Marin County		216	216	\$1,491,078		Last-mile
32	IP Networks	Hwy 36 Humboldt-Trinity Counties	Humboldt and Trinity Counties	0	527	527	\$5,753,240	\$10,917	Middle-mile

	GRANTEE	PROJECT NAME	LOCATION	UNSERVED HOUSE HOLDS	UNDER-SERVED HOUSE HOLDS	TOTAL # OF POTENTIAL HOUSE HOLDS	GRANT AWARD	FUNDS REQUESTED PER HOUSE HOLD	TYPE
33	Karuk Tribe	Klamath River Rural Broadband Initiative (last mile & middle mile)	Humboldt County	295	321	616	\$6,602,422	\$10,718	Last-mile
34	MCC Telephony	Kernville Teleconnect	Kernville, Onyx, Weldon, Wofford Heights, Inyokern	7,779	1,400	9,179	\$285,992	\$31	Last-mile
35	Pinnacles Telephone Company	Pinnacles Monument	San Benito County	0	47	47	\$195,299	\$4,155	Last-mile
36	Plumas Sierra Telecom	Plumas-Sierra Middle-Mile	Plumas, Lassen and Sierra	0	13,000	13,000	\$1,721,280	\$132	Middle-mile
37	Ponderosa Cable Vision	Auberry	Fresno	1,043	0	1,043	\$1,154,780	\$1,107	Last-mile
38	Ponderosa Telephone Company	Beasore/Central Camp	Madera County	32	0	32	\$1,755,042	\$54,845	Last-mile
39	Ponderosa Telephone Company	Big Creek	Fresno County	6	73	79	\$898,574	\$11,374	Last-mile
40	Ponderosa Telephone Company	Cressman	Cressman area of Fresno County	59	11	70	\$1,027,380	\$14,677	Last-mile
41	Race Telecom	Gigafy Backus	Kern County	253	0	253	\$2,239,991	\$8,854	Last-mile
42	Race Telecom	Kern County City of Boron	Kern County	0	892	892	\$3,426,357	\$3,841	Last-mile
43	Race Telecom	Kern County High Desert	Kern County	0	4,371	4,371	\$12,583,343	\$2,879	Last-mile
44	Race Telecom***	Mojave Air and Space Port	Kern County	0	0	0	\$506,199	\$0	Last-mile
**Happy Valley received additional funding \$462,978 + \$1,833,689 = \$2,296,667									
***Race project served business only.									

	GRANTEE	PROJECT NAME	LOCATION	UNSERVED HOUSE HOLDS	UNDER-SERVED HOUSE HOLDS	TOTAL # OF POTENTIAL HOUSE HOLDS	GRANT AWARD	FUNDS REQUESTED PER HOUSE HOLD	TYPE
45	Race Telecomm	Mono County	Mono County	0	727	727	\$4,650,593	\$6,397	Last-mile
46	Race Telecomm	Gigafy Occidental	Occidental	458		458	\$7,687,016	\$16,784	Last-mile
47	Race Telecom	Gigafy North 395	Walker, Bridgeport		444	444	\$3,124,490	\$7,037	Last-mile
48	Race Telecom	Gigafy Mono	Mono County	0		399	\$6,580,007	\$13,893	Last-mile
49	Race Telecom	Five Mining	Sonoma County		202	202	\$2,037,721	\$10,087	Last-mile
50	Sunesys	Connected Central Coast	Portions of the Central Coast between Salinas and Soledad in Santa Cruz and Monterey Counties	59	11,065	11,124	\$10,640,000	\$956	Middle-mile
51	Surfnet Comm.	Paradise Road	Paradise Road, Monterey County	0	278	278	\$177,954	\$853	Last-mile
52	Siskiyou Tele****	Happy Camp	Siskiyou County	10	27	37	\$50,014	\$5,001	Last-mile
			Somes Bar				\$3,595,071	\$133,151	Middle-mile
53	Ultimate Internet Access	Helendale	San Bernardino County	0	2,279	2,279	\$1,385,825	\$608	Last-mile
54	Ultimate Internet Access	Wrightwood	San Bernardino and Los Angeles counties	0	1,857	1,857	\$1,937,380	\$1,043	Last-mile
55	Willits Online	Boonville	Mendocino County	0	605	605	\$122,931	\$271	Last-mile
56	Willits Online	Covelo	Mendocino	300	0	300	\$54,000	\$180	Last-mile
57	Willits Online	Laytonville	Mendocino	500	0	500	\$54,000	\$108	Last-mile
58	Winterhaven Telephone Company (TDS Telecom)	Winterhaven	Imperial County	0	961	961	\$2,063,967	\$2,148	Last-mile
**** Siskiyou Tele (\$50,014 + \$3,595,071 = 3,645,845)									
	Total 2016	New Projects		468	16,764	18,249	\$33,977,978		
Total Approved for CASF Last Mile Projects				16,012	41,834	57,846	\$95,155,864		
Total Approved for CASF Middle Mile Projects				59	52,850	52,909	\$57,795,547		
Total of All Approved CASF Projects As Of 12/31/16				16,071	94,684	110,755	\$152,951,411		

Attachment A-2: Pending Infrastructure Projects⁵³

(as of December 31, 2016)

	GRANTEE	PROJECT NAME	LOCATION	UNSERVED HOUSE HOLDS	UNDER-SERVED HOUSE HOLDS	TOTAL # OF HOUSE HOLDS	GRANT REQUEST BY APPLICANT	LOAN REQUESTS BY APPLICANT	INFRASTRUCTURE TYPE
1	Ducor Telephone Company	Deliver Broadband to the Pacific Crest to Cross the Digital Divide	Tulare and Inyo Counties	0	174	174	\$2,339,400	\$0	Middle-mile*
2	Inyo Networks	Digital 299 Broadband	Humboldt, Trinity and Shasta counties	307	0	307	\$46,709,036	\$0	Middle-mile*
3	LCB Communications LLC	Light Saber Project	Santa Clara County	0	1,636	1,636	\$2,801,023	\$0	Last-mile
4	Race Telecom	Gigafy Phelan	San Bernardino County	0	10,028	10,028	\$23,148,793	\$0	Last-mile
5	Renegade	Vandyland	Santa Barbara County		1,299	1,299	\$460,000	\$154,000	Last-mile
6	Surfnet Communications	Las Cumbres Fiber Project	Santa Cruz County	0	123	123	\$729,932	\$243,311	Last-mile
7	CalNeva Broadband, LLC	RFC-CH Gigabit Project	Fresno Co. Coalinga/Huron				\$511,170		Last-mile
TOTAL				307	13,260	13,567	\$76,699,354	\$397,311	
				Total Amount Requested				\$77,096,665	

*Middle mile projects with Last-mile components a/o 12/31/16

⁵³ Data as submitted by applicants. See <http://www.cpuc.ca.gov/General.aspx?id=1040>.

Attachment A-3: Infrastructure Projects Denied, Withdrawn or Inactive⁵⁴

(as of December 31, 2016)

	GRANTEE	PROJECT NAME	LOCATION	GRANT REQUEST	LOAN REQUEST	TOTAL CASF REQUEST	INFRASTRUCTURE TYPE
1	Cal.net, Inc.	El Dorado and Amador BB1	El Dorado and Amador	\$1,500,000	\$500,000	\$2,000,000	Last-mile
2	Ducor Telephone Company	Rancho Tehama FTTH Network	Tehama	\$3,107,706	\$0	\$3,107,706	Last-mile
3	Golden Bear Broadband	Northern California Middle Mile	Butte, Colusa, Del Norte, Glenn, Humboldt, Lake, Lassen, Mendocino, Modoc, Plumas, Shasta, Siskiyou, Sonoma, Tehama, Trinity, and Yolo	\$119,394,315	\$0	\$119,394,315	Middle-mile
4	Inyo Networks	Alpine Peaks	Placer County	\$759,404	\$0	\$759,404	Last-mile
5	Inyo Networks	South Inyo	Inyo	\$3,091,061	\$0	\$3,091,061	Middle-mile*
6	North County Communications Corp.	Humboldt & Del Norte Project	Humboldt and Del Norte	\$14,828,917	\$0	\$14,828,917	Middle-mile*
7	Plumas Sierra Telecommunications**	PST Plumas/Sierra/Lassen Last-Mile Broadband Project	Plumas, Sierra and Lassen	\$676,902	\$0	\$676,902	Last-mile
8	Ponderosa Telephone	DLC	Madera and Fresno	\$945,000	\$0	\$945,000	Last-mile
9	Ponderosa Telephone	Wishon	Madera and Fresno	\$2,029,848	\$0	\$2,029,848	Last-mile
10	Race Telecom	California City	Kern	\$9,807,584	\$0	\$9,807,584	Last-mile
11	Race Telecom	City of Mojave	Kern	\$3,531,161	\$0	\$3,531,161	Last-mile
12	Schat	Inyo County	Inyo	\$1,414,725	\$452,712	\$1,867,437	Last-mile
13	Schat	Mono County	Mono	\$1,457,257	\$484,944	\$1,942,201	Last-mile
14	Surfnet Communications	Santa Cruz Mountains	Santa Cruz	\$812,381	\$270,794	\$1,083,175	Last-mile
15	The Sea Ranch Association	The Sea Ranch Fiber To The Home (FTTH) Project	Sonoma County	\$3,120,000	\$0	\$3,120,000	Last-mile
16	Viasat, Inc.	Broadband Via Satellite for California	Most of the state	\$11,130,997	\$0	\$11,130,997	Last-mile

*Middle mile projects with last mile components

**Applicant withdrew application on 12/7/2015, but may resubmit a new application without challenged areas.

⁵⁴ Data as submitted by applicants. See <http://www.cpuc.ca.gov/General.aspx?id=1040>. Inactive refers to projects having elements denied for which the applicant has not responded or amend the project.

Attachment A-4: Rescinded Infrastructure Projects⁵⁵

(as of December 31, 2016)

	GRANTEE	PROJECT NAME	GRANT AWARD	LOAN AWARD	TOTAL CASF AWARD	INFRASTRUCTURE TYPE	Reason for Rescinding Grant
1	AT&T California	Carmel	\$91,083	\$0	\$91,083	Last-mile	Opted out of the project due to economic inability to recover sufficient revenues to recover costs
2	AT&T California	Carmel Valley	\$47,916	\$0	\$47,916	Last-mile	Completed work but opted out of receiving CASF funding
3	AT&T California	Friant	\$46,463	\$0	\$46,463	Last-mile	Opted out of project deployment due to costs
4	AT&T California	Irwin	\$41,411	\$0	\$41,411	Last-mile	Opted out of the project due to economic inability to recover sufficient revenues to recover costs
5	AT&T California	Los Banos	\$120,170	\$0	\$120,170	Last-mile	Opted out of project deployment due to costs
6	AT&T California	Madera Acres	\$43,301	\$0	\$43,301	Last-mile	Opted out of the project due to economic inability to recover sufficient revenues to recover costs
7	AT&T California	Oakdale	\$108,783	\$0	\$108,783	Last-mile	Opted out of the project due to economic inability to recover sufficient revenues to recover costs
8	AT&T California	Vacaville	\$171,914	\$0	\$171,914	Last-mile	Opted out of project deployment due to costs
9	Broadband Associates	Highway 299	\$7,830,720	\$0	\$7,830,720	Middle-mile	Encountered financial and construction issues
10	Broadband Associates	Northeastern California	\$18,012,964	\$0	\$18,012,964	Middle-mile	Did not receive Recovery Act funding, implements the contingency terms in the previous resolution
11	California Broadband Cooperative - Inyo Networks	Last Mile	\$2,247,308	\$0	\$2,247,308	Last-mile	Did not receive Recovery Act funding, implements the contingency terms in the previous resolution
12	California Valley Broadband, LLC	California Broadband	\$7,878,386	\$0	\$7,878,386	Middle-mile	Did not receive Recovery Act funding, implements the contingency terms in the previous resolution
13	Citizens Telecommunications Company of California	Alturas Middle-Mile	\$225,918	\$0	\$225,918	Middle-mile	Did not receive Recovery Act funding, implements the contingency terms in the previous resolution
14	Citizens Telecommunications Company of California	Lookout	\$50,707	\$0	\$50,707	Last-mile	Did not receive Recovery Act funding, implements the contingency terms in the previous resolution
15	Nevada County Economic Resource Council	Nevada County Connected	\$1,312,747	\$0	\$1,312,747	Middle-mile	Unsuccessful in acquiring outside investments, sponsorships, or federal grant awards
16	Plumas Sierra Telecommunications	Last Mile	\$166,911	\$0	\$166,911	Last-mile	Did not receive Recovery Act funding, implements the contingency terms in the previous resolution
17	Race Telecom	Last Mile	\$9,500,864	\$0	\$9,500,864	Last-mile	Did not receive Recovery Act funding, implements the contingency terms in the previous resolution
18	Rapid Link, Inc. and Mother Lode Internet	Mother Lode Broadband	\$2,771,341	\$0	\$2,771,341	Middle-mile	Failed to submit performance bond
19	Redwood Telephone LLC	NorCal Open Community Fiber Network Project	\$2,169,815	\$0	\$2,169,815	Middle-mile*	Unsuccessful in acquiring outside investments, sponsorships, or federal grant awards

⁵⁵ Data based on CASF resolutions. See <http://www.cpuc.ca.gov/General.aspx?id=1057>.

	GRANTEE	PROJECT NAME	GRANT AWARD	LOAN AWARD	TOTAL CASF AWARD	INFRASTRUCTURE TYPE	Reason for Rescinding Grant
20	Shasta Co. Telecom	Shasta County	\$2,238,806		\$2,238,806	Last-mile	Did not fulfill reporting requirements or respond to contact requests
21	Siskiyou County Economic Development Council	Middle Mile Project	\$1,697,029	\$0	\$1,697,029	Middle-mile	Unsuccessful in acquiring outside investments, sponsorships, or federal grant awards
22	Siskiyou Telephone	Seiad	\$2,621,824	\$0	\$2,621,824	Middle-mile*	Unsuccessful in acquiring outside investments, sponsorships, or federal grant awards
23	Surfnet	Monterey Dunes	\$79,078	26,359	\$105,437		Matching funding agreement lapsed
24	Telenational Communications Inc.	Mother Lode Broadband	\$3,110,064	\$0	\$3,110,064	Middle-mile	Failed to submit performance bond
25	University Corporation at Monterey Bay	Central Coast BB Consortium Middle-Mile	\$4,975,009	\$0	\$4,975,009	Last-mile	Did not receive Recovery Act funding, implements the contingency terms in the previous resolution
26	Verizon	Crowley Lake & Swall Meadow	\$286,398	\$0	\$286,398	Last-mile	The total grant amount expired before Verizon provided service and Verizon did not seek grant reimbursement following infrastructure deployment; project was completed
27	Verizon	Pinyon	\$174,000		\$174,000	Last-mile	Did not seek reimbursement; Project was completed
28	Verizon	The Sea Ranch	\$1,872,017		\$1,872,017	Last-mile	Did not seek reimbursement; Project was completed
29	Willits Online LLC	Westport	\$149,364		\$149,364	Last-mile	Without prejudice, added costs

*Middle mile projects with last mile components

Attachment B: 2016 Consortia Account Reported Benefits⁵⁶

Broadband Consortium of the Pacific Coast

- Held more than 20 meetings with local/state Decision Makers resulting in broadband policies in the following geographic areas/topics: Santa Maria, Lompoc, Solvang, County of Santa Barbara, County of Ventura, City of Ventura. The City of Ventura has a draft policy pending approval.
- Advanced strategies for connecting anchor institutions with the conduct of performance of mapping and asset analysis
- Participated in developing 1 Broadband infrastructure applications in following locations: On August 12, 2016, the CPUC received an application for CASF funding from Renegade Technologies (The Vandyland Plan).
- List Broadband infrastructure plans promoted, adopted: Convened and conducted regional stakeholder meetings in Ventura County and Northern Santa Barbara County (Lompoc East). Initiated strategic dialogue between municipalities and broadband providers. The cities of Santa Paula, Lompoc, and Santa Maria are uniquely positioned for breakthroughs.
- 18 meetings with officials and business representatives from Lompoc and Santa Barbara County, Santa Paula area and Ventura County and following outreach activities. led to following outcomes: A new 1500 development east of Santa Paula is developing strategy for delivering Gigabit service / A relook at a tri-county anchor institution connection strategy as a catalyst for economic development as well as connections to rural outlying area.

East Bay Broadband Consortium

- Tech Exchange received 324 desktops, 250 laptops and 146 monitors
- 20 Tech Fairs held; 804 families received free computers and 177 families signed up for new Broadband subscriptions.
- Agreement with Oakland Parks and Rec to establish pilot; agreed with Community Technology Network to coordinate program; drafted program redesign.
- Collaborative launched its website, assisted 7 companies to develop diversity, inclusion and equity strategies and hosted sold-out forum for tech workers.
- Tech Pathways provides framework for understanding tech careers and covers East Bay tech training programs.

⁵⁶ Consortia with CASF funding for 2016 operations were requested to report benefits to the Communications Division. This self-reporting is presented here. No information was requested from California One Million NIU, Connected Capital or San Diego/Imperial Consortia because no payments were made for activities in 2016.

- EBBC participated in 2 T2P2 meetings. EBBC presented information on TechPathways and engaged participation and presented information on Smart Neighborhoods pilot.
- Planning for 4th EBBC Summit has begun.
- Narrative, Tabular and Financial Reports for Q1/Year 1 have been submitted.
- New website has been designed and will be launched in Q2/Year 1.

Eastern Sierra Connect Consortium

- 36 Internet Literacy Courses delivered 4 hours per course to average 20 individuals per class.
- Held 3 meetings with local/state Decision Makers concerning broadband policies in rural areas of Kern County.
- Submitted final Reports and invoice for the CASF Consortia grant closure.

Gold Country Broadband Consortium

- 4 Internet Literacy Courses delivered 8 hours per course to 72 individuals
- Held 2 meetings with local/state Decision Makers resulting in broadband policies in the following geographic areas/topics: Nevada, Co, Placer Co, El Dorado Co., Alpine co and Sierra Co meetings regarding broadband implementation needs and funding requirements for new projects.
- Participated in developing 3 Broadband infrastructure applications in following locations: Two grant proposals from Cal.Net for broadband infrastructure in the region, plus 1 application for an EDA feasibility grant in El Dorado County.
- List Broadband infrastructure plans promoted, adopted: assisted in the Broadband infrastructure plan for El Dorado Co and participated in the EDA feasibility grant application, and participated in the infrastructure plan for Nevada Co, in particular, Grass Valley and Nevada City
- 2 meetings with Town of Washington and unincorporated parts of Auburn area and following outreach activities: Determined that broadband delivery speeds are non-existent or extremely slow, outcome is to create plan for access to broadband in these communities and provide mapping support through consultant.

North Bay/North Coast Broadband Consortium

- The CASF grant to **NBNCBC** ended June 30, 2016. While consortium-wide activities were minimal during the second half of 2016, the individual county teams did continue their efforts in a range of activities including collaborating with local groups that were working in the area of access and adoption and with those providers engaged in deploying broadband infrastructure projects. In addition, the Mendocino team provided CPUC Commissioner Sandoval valuable input on the Rural Call Completion Proceeding that was approved and issued on December 20, 2016. Specifically, achievements in 2016 include:

- **Two Assessment Reports Produced**--Mendocino completed a comprehensive assessment of free public access computer availability and digital literacy programs that are found throughout the county in March 2015. The full report –“*The Availability of and the Needs for Adoption Programs In Mendocino County*” was distributed to BAMC’s email list of over 400 people, and is posted on the BAMC website. The report identified a significant need in most areas of the county for digital literacy classes and public access to free use of computers and Wi-Fi, especially the rural and coastal areas, where many people do not have access at home.
- Sonoma developed and distributed a survey to gather data on existing adoption programs. “*The Sonoma County Adoption Report*” was published in November 2015. The results showed that current programs are clustered around the Highway 101 corridor.
- The Marin County Board of Supervisors and the MTA charged MBTF with the responsibility to support broadband adoption programs, with funding from the county budget along with funding from MTA. MBTF has 3 target communities for adoption programs including: The Canal Area neighborhood in San Rafael, the Hamilton section of Novato, and Marin City in the unincorporated area of Southern Marin. The Marin Telecommunications Agency, the County of Marin and other non-profits partnered to establish a ten computer lab in Marin City that is used for digital literacy training for low income youth and seniors/adults.
- Mendocino (BAMC) worked with 9 school districts to develop a digital literacy program and submitted the proposal for private funding (Bechtel and Cisco). Unfortunately, to date BAMC has not found funding for the program but efforts are ongoing. BAMC successfully applied to the CETF/Frontier grant program on behalf of the CAI Healthy Start. BAMC worked with the Laytonville Family Resource Center to facilitate participation in this program, and on June 28th were informed that they have been awarded the grant. The terms are from July 1, 2016 to June 30, 2018.
- Napa developed a two-year project plan to provide broadband access and adoption training to as many as 500 migrant workers who reside in the three county-owned and operated farm worker centers throughout the year–“*Napa County Farmworker Housing Centers: Two Year Broadband Adoption, Training and Access Program*”. Napa continues to look for funding to make the program operational.
- Sonoma County’s Guerneville Senior Center as part of ASB’s outreach program partnered with ATT on a tablet training session this quarter. The meeting was filled to capacity and a waiting list has generated the need for a follow up session for those unable to attend the first session. A follow-up survey indicated a need to conduct sessions on smart phone training. Comcast has been invited by school districts through discussions with Russian River Area Resource Advocates and ASB in West Sonoma County to attend school board meetings and present their Internet Essentials Program. Sonoma County has 46 independent school districts, many of which are in rural West County.
- **Three CASF Grants Pursued** --As a result of county team efforts three CASF Infrastructure grant applications were submitted.
 - Inyo Networks---Nicasio was approved; Race Communications---Occidental (Greater Joy Road) was approved; and,
 - Sea Ranch Association--- Sea Ranch has been rescinded, but it has gone ahead with its own implementation.
- **NON-CASF Projects Launched**--In other instances local providers stepped up to increase services, but without seeking a CASF grant.
 - Mendocino County--Assistance was offered to providers to develop CASF grant applications, and work began with Further Reach on an application that ultimately was not completed due to barriers. However, limited deployment has occurred in the following areas. Further Reach---Gualala, Point Arena, Albion; North Coast Internet (NCI)---Central-Inland Mendocino; SeaKay---Westport; and US Cellular---Central Northern Mendocino;
 - Sonic--in several communities in Marin and Sonoma counties.

Tahoe Basin Projects

- Began meeting with individual stakeholders from the public and private sector in order to facilitate the development and adoption of a Universal Dig Once Policy for the Lake Tahoe Basin. Initial in-person discussions have been with the Tahoe Regional Planning Agency and the Tahoe Transportation District. We're continuing to seek support from other applicable Basin jurisdictions, as well as reviewing plans, codes, and ordinances for existing language that would support a Dig Once policy.
- Drafting a Dig One Policy Subcommittee roster of representatives from all Basin jurisdictions and interested ISP's. The first meeting is slated to convene in early January. By bringing these various entities together we will raise understanding, awareness, and support for a Basin-wide Dig Once Policy. Subsequently, existing and potential public/private sector relationships will be formed and strengthened in this environment.
- Reviewed CASF grant applications for Inyo Networks' Alpine Peaks and Trans-Sierra projects. Reviewed challenges by incumbent Wireless Internet Service Providers (WISP) and provided data to applicant regarding Alpine Peaks project, which was subsequently rejected by the Communications Division. Provided liaison between applicant and the local public utilities district regarding the Trans-Sierra project, which is currently considered to be an inactive application due to delays.
- Met with the Sierra Business Council (SBC) to discuss Trans-Sierra project issues and to identify ways to reactivate the project. Also discussed SBC's new role as Fiscal Agent for the Gold County Broadband Consortium and how we could work together to revive the Trans-Sierra project, as it overlaps our two regions.
- Facilitated talks between Inyo Networks, CPUC, and the Alpine Peaks Homeowners Association (HOA) in order to address questions, comments, and concerns stemming from the CPUC's rejection of the Alpine Peaks project.
- Reestablished talks with Charter Communications as a means to address Kingswood West's status as an underserved area within Charter's service footprint. Charter is under a CPUC deadline to upgrade existing digital systems to a minimum of 60 Mbps by May 2017. TPC is looking into whether or not this ruling would apply to Kingswood West, as well as other areas around the Tahoe Basin.
- Reviewed infrastructure project alternatives, for both unaddressed areas, such as Kingswood West, and for areas impacted by stalled or rejected projects, such as the Tahoe Basin middle mile segments included in the Trans Sierra project.
- Met with ISPs to gauge interest in providing service to Rubicon/Meeks Bay and Kingswood West. Several ISP's have expressed interest in both middle and last mile projects in the Basin, namely FiWi Communications and Zayo Group. We're continuing to work with ISPs to explore ways to reduce projects costs, namely through identifying available public infrastructure, applying for CASF construction grants, and working with local jurisdiction to ease right-of-way restrictions.
- Continuing to seek out creative solutions for both Kingswood West and Rubicon/Meeks Bay, such as researching the feasibility of TPC constructing and owning broadband infrastructure (conduit and fiber), as well as the feasibility of creating Local Improvement Districts for localized fiber network installation.
- Reviewed conditions of approval for transactions involving AT&T, Charter, Frontier and Suddenlink, and developed alternatives and recommendations for leveraging the decisions/orders resulting from those proceedings.

- Reviewed shadow conduit/dig once policies, developed recommendations for moving forward, including discussion of ownership alternatives.
- Continued work with El Dorado County regarding its successful application for a planning grant from the Economic Development Administration.
- As the neutral convener and intermediary between the public landowners, regulatory agencies and the cell tower companies, the Tahoe Prosperity Center is continuing to move cell phone coverage expansion forward. In order to serve the recently updated annual visitor numbers of 24 million Tahoe visitors, new cell towers are needed in various sites throughout the Tahoe Basin. Three sites have been identified by the USFS for expansion this year and the TPC is currently working with the providers to determine the primary permittee for each location. We are currently facilitating co-location discussions for these three sites as well.
- In the next quarter we will host a Phase II meeting “Navigating the Permit Process” with all the partners and stakeholders in the expansion of cell service (Agency representatives and Cell Tower and Cell Provider representatives.)
- Conducted a Broadband Provider "Speed Dating" Forum in Northern Santa Barbara County. Acquired briefings of CAF deployment strategies

Attachment C: Approved Public Housing Infrastructure Grants⁵⁷

Projects Approved									
Built Projects*									
Item	RECIPIENT	PROJECT	CITY	ZIP	UNITS	GRANT AWARD 2015	GRANT AWARD 2016	PAYMENTS 2016	TOTAL PAID
1	Abode Communities	Laurel Village	Los Angeles	91331	80	\$36,000	\$0	\$29,370	\$29,370
2	Affordable Housing Access	Villa Mirage	Rancho Mirage	92270	98	\$0	\$44,100	\$0	\$0
3	Affordable Housing Alliance II, Inc. dba Integrity Housing	Dudley Street Senior Apartments	Pomona	91766	84	\$0	\$37,350	\$0	\$0
4	Affordable Housing Alliance II, Inc. dba Integrity Housing	Guest House	Santa Ana	92705	72	\$0	\$32,400	\$0	\$0
5	Affordable Housing Alliance II, Inc. dba Integrity Housing	Rocky Hill Veterans	Vacaville	95688	39	\$0	\$23,400	\$0	\$0
6	Better Opportunity Builders (BOB)	Brierwood	Fresno	93722	50	\$0	\$47,730	\$0	\$0
7	Better Opportunity Builders (BOB)	Villa Del Mar	Fresno	93704	48	\$28,080	\$0	\$7,020	\$7,020
8	Burbank Housing Development Corp.	Crossroads Apartments	Santa Rosa	95407	79	\$0	\$35,288	\$0	\$0
9	Burbank Housing Development Corp.	Parklane Apartments	Petaluma	94952	90	\$0	\$39,875	\$38,710	\$38,710
10	Butterfield Retirement LP	Butterfield Retirement	Morgan Hill	95037	114	\$0	\$34,020	\$0	\$0
11	Cabrillo Economic Development Corporation	Montgomery Oaks	Ojai	93023	21	\$12,600	\$0	\$0	\$3,063
12	Cabrillo Economic Development Corporation	Valle Naranjal Farmwork Housing	Piru	93040	68	\$30,600	\$0	\$0	\$9,138
13	Chinatown Community Development Center	227 Bay	San Francisco	94133	50	\$0	\$22,313	\$0	\$0
14	Chinatown Community Development Center	990 Pacific	San Francisco	94133	92	\$0	\$40,120	\$0	\$0
15	Community Housing Works	Cypress Cove	Escondido	92027	200	\$0	\$85,000	\$0	\$0
16	Community Housing Works	Mayberry Townhomes	San Diego	92113	70	\$0	\$40,250	\$0	\$0
17	Community Housing Works	Northwest Manors II (Mountain)	Pasadena	91104	26	\$0	\$15,600	\$0	\$0
18	Community Housing Works	Northwest Manors II (Raymond)	Pasadena	91103	18	\$0	\$10,800	\$0	\$0
19	CONCERNED CITIZENS OF SOUTH CENTRAL	1410 Apartments	Los Angeles	90011	12	\$7,192	\$0	\$0	\$0
20	CONCERNED CITIZENS OF SOUTH CENTRAL	Central Avenue Village Apartments	Los Angeles	90011	45	\$24,438	\$0	\$0	\$0
21	CONCERNED CITIZENS OF SOUTH CENTRAL	Gwen Bolden Manor	Los Angeles	90011	24	\$14,399	\$0	\$0	\$0
22	CONCERNED CITIZENS OF SOUTH CENTRAL	Juanita Tate Legacy Towers	Los Angeles	90011	118	\$34,882	\$0	\$0	\$0
23	CONCERNED CITIZENS OF SOUTH CENTRAL	ONE WILKINS PLACE	Los Angeles	90011	18	\$10,605	\$0	\$0	\$0
24	CONCERNED CITIZENS OF SOUTH CENTRAL	Roberta II	Los Angeles	90011	40	\$22,255	\$0	\$0	\$0
25	CONCERNED CITIZENS OF SOUTH CENTRAL	Roberta Stephens Apartments I	Los Angeles	90011	40	\$22,255	\$0	\$0	\$0
26	Deep Green Housing and Community Development	Broadway Village II	Los Angeles	90037	50	\$19,900	\$0	\$12,275	\$18,650
27	EAH	Floral Gardens	Selma	93662	56	\$23,140	\$0	\$7,800	\$7,800

* Projects may be built by end of calendar year 2016, but completion report and full payment made in 2017

⁵⁷ Local assistance expenditure/encumbrance information captured when expenditure/encumbrance made and validated with CALSTARS fiscal reports.

Item	RECIPIENT	PROJECT	CITY	ZIP	UNITS	GRANT AWARD 2015	GRANT AWARD 2016	PAYMENTS 2016	TOTAL PAID
28	EAH	Fountain West	Fresno	93705	72	\$30,793	\$0	\$10,363	\$10,363
29	EAH	Palm Court	San Jose	95110	66	\$26,128	\$0	\$26,098	\$26,098
30	EAH	Riviera	San Rafael	94901	28	\$13,033	\$0	\$12,333	\$12,333
31	EAH	Rodeo Gateway	Rodeo	94572	50	\$17,175	\$0	\$15,313	\$15,313
32	EAH	San Clemente	Corte Madera	94925	79	\$31,923	\$0	\$29,736	\$29,736
33	EAH	Silver Oak	Oakley	94561	24	\$12,573	\$0	\$12,573	\$12,573
34	EAH	The Oaks Apartments	Walnut Creek	94597	36	\$15,428	\$0	\$4,838	\$4,838
35	EAH	Turina House	San Rafael	94903	28	\$12,533	\$0	\$11,833	\$11,833
36	EAH	Vista Park I	San Jose	95136	83	\$30,608	\$0	\$30,493	\$30,493
37	EAH	Vista Park II	San Jose	95136	83	\$30,608	\$0	\$30,493	\$30,493
38	EAH Housing	Buchanan Park	San Francisco	94115	68	\$0	\$30,125	\$0	\$0
39	EAH Housing	Casa Adobe	San Pablo	94806	54	\$0	\$21,288	\$0	\$0
40	EAH Housing	Centertown	San Rafael	94901	60	\$0	\$26,638	\$0	\$0
41	EAH Housing	Don De Dios	San Jose	95122	70	\$0	\$31,263	\$0	\$0
42	EAH Housing	Drakes Way	Larkspur	94939	24	\$0	\$13,833	\$0	\$0
43	EAH Housing	Elena Gardens	San Jose	95132	168	\$0	\$66,860	\$0	\$0
44	EAH Housing	Golden Oaks	Oakley	94561	50	\$0	\$29,225	\$0	\$0
45	EAH Housing	Pollard Plaza	San Jose	95122	130	\$0	\$49,650	\$0	\$0
46	East Bay Asian Local Development Corporation	Avalon Senior	Emeryville	94608	67	\$0	\$27,925	\$0	\$0
47	East Bay Asian Local Development Corporation	Drasnin Manor	Oakland	94601	26	\$0	\$13,633	\$0	\$0
48	East Bay Asian Local Development Corporation	Effie's House	Oakland	94606	21	\$0	\$12,175	\$0	\$0
49	East Bay Asian Local Development Corporation	Giant Road	San Pablo	94806	86	\$0	\$38,115	\$0	\$0
50	East Bay Asian Local Development Corporation	Hugh Taylor House	Oakland	94621	43	\$0	\$20,848	\$0	\$0
51	East Bay Asian Local Development Corporation	Jack London Gateway Senior	Oakland	94607	61	\$19,865	\$0	\$8,163	\$8,163
52	East Bay Asian Local Development Corporation	Lillie Mae Jones	Richmond	94801	26	\$0	\$11,580	\$0	\$0
53	East Bay Asian Local Development Corporation	Madison Park	Oakland	94607	98	\$0	\$42,605	\$0	\$0
54	East Bay Asian Local Development Corporation	Madrone Hotel	Oakland	94607	32	\$0	\$18,088	\$0	\$0
55	East Bay Asian Local Development Corporation	Marcus Garvey	Oakland	94607	22	\$0	\$13,050	\$0	\$0
56	East Bay Asian Local Development Corporation	Oak Park	Oakland	94601	35	\$0	\$16,975	\$0	\$0
57	East Bay Asian Local Development Corporation	Prosperity Place (aka 1110 Jackson)	Oakland	94607	71	\$0	\$31,501	\$993	\$993

Item	RECIPIENT	PROJECT	CITY	ZIP	UNITS	GRANT AWARD 2015	GRANT AWARD 2016	PAYMENTS 2016	TOTAL PAID
58	East Bay Asian Local Development Corporation	San Pablo Hotel	Oakland	94612	144	\$0	\$42,980	\$0	\$0
59	East Bay Asian Local Development Corporation	Seven Directions	Oakland	94601	36	\$13,753	\$0	\$10,853	\$10,853
60	East Bay Asian Local Development Corporation	Slim Jenkins Court	Oakland	94607	32	\$0	\$15,300	\$0	\$0
61	East Bay Asian Local Development Corporation	Swans Market	Oakland	94607	18	\$0	\$10,175	\$0	\$0
62	Eden Housing, Inc	Eden Essei Terrace	Hayward	94544	100	\$0	\$36,575	\$0	\$0
63	Eden Housing, Inc	Hayward Senior	Hayward	94541	60	\$0	\$24,375	\$0	\$0
64	Eden Housing, Inc	Josephine Lum Lodge AB	Hayward	94545	78	\$0	\$31,983	\$0	\$0
65	Eden Housing, Inc	Josephine Lum Lodge CD	Hayward	94545	72	\$0	\$29,505	\$0	\$0
66	Eden Housing, Inc	The Altenheim	Oakland	94602	174	\$52,123	\$0	\$0	\$0
67	Eden Housing, Inc	Wamer Creek	Novato	94947	61	\$0	\$25,358	\$0	\$0
68	Eden Housing, Inc.	Jasmine Square	Morgan Hill	95037	72	\$0	\$28,029	\$0	\$0
69	Eden Housing, Inc.	Monticelli	Gilroy	95020	52	\$0	\$23,195	\$0	\$0
70	Eden Housing, Inc.	Rancho Park	Hollister	95023	54	\$0	\$24,195	\$0	\$0
71	Eden Housing, Inc.	Royal Court	Morgan Hill	95037	55	\$0	\$19,028	\$0	\$0
72	Eden Housing, Inc.	Sequoia Manor	Fremont	94538	81	\$0	\$33,975	\$0	\$0
73	Eden Housing, Inc.	Wheeler Manor 650 5th	Gilroy	95020	21	\$0	\$10,151	\$0	\$0
74	Eden Housing, Inc.	Wheeler Manor 651 6th	Gilroy	95020	90	\$0	\$35,708	\$0	\$0
75	Eden South Bay, Inc.	Camphora Apartments	Soledad	93960	44	\$26,198	\$0	\$26,198	\$26,198
76	Episcopal Community Services of San Francisco	Bishop Swing Community House	San Francisco	94103	135	\$38,685	\$0	\$18,350	\$18,350
77	Episcopal Community Services of San Francisco	Canon Barcus Community House	San Francisco	94103	48	\$21,408	\$0	\$6,588	\$6,588
78	Episcopal Community Services of San Francisco	Canon Kip Community House	San Francisco	94103	104	\$30,848	\$0	\$13,838	\$13,838
79	First Community Housing	Bay Avenue Senior	Capitola	95010	109	\$32,655	\$0	\$26,148	\$26,148
80	First Community Housing	Betty Ann Gardens	San Jose	95133	76	\$29,428	\$0	\$29,048	\$29,048
81	First Community Housing	Casa Feliz Studios	San Jose	95112	60	\$22,700	\$0	\$7,050	\$16,200
82	First Community Housing	Craig Gardens	San Jose	95008	90	\$26,100	\$0	\$13,400	\$25,425
83	First Community Housing	Creekview Inn	San Jose	95133	25	\$8,150	\$0	\$8,025	\$8,025
84	First Community Housing	Curtner Studios	San Jose	95125	179	\$0	\$53,533	\$0	\$0
85	First Community Housing	El Paseo	San Jose	95130	98	\$33,433	\$0	\$19,496	\$32,733
86	First Community Housing	Guadalupe Apartments	San Jose	95110	23	\$13,583	\$0	\$12,468	\$12,468
87	First Community Housing	Los Esteros	San Jose	95131	246	\$66,690	\$0	\$31,865	\$63,340
88	First Community Housing	Murphy Ranch	Morgan Hill	95037	100	\$34,838	\$0	\$1	\$33,038

Item	RECIPIENT	PROJECT	CITY	ZIP	UNITS	GRANT AWARD 2015	GRANT AWARD 2016	PAYMENTS 2016	TOTAL PAID
89	First Community Housing	Orchard Gardens	Sunnyvale	94089	62	\$21,680	\$0	\$17,330	\$17,330
90	First Community Housing	Paula Apartments	San Jose	95126	21	\$10,152	\$0	\$10,046	\$10,046
91	First Community Housing	Troy Apartments	San Jose	95110	30	\$16,475	\$0	\$15,425	\$15,425
92	First Community Housing	Villa Montgomery	Redwood City	94063	58	\$18,845	\$0	\$10,395	\$18,395
93	Global CVCAH	Bay Family	Moreno Valley	92553	61	\$0	\$26,840	\$0	\$0
94	Global CVCAH	Clinton Apartments	Mecca	92254	59	\$0	\$25,960	\$0	\$0
95	Global CVCAH	La Amistad	Mendota	93640	81	\$0	\$35,640	\$0	\$0
96	Global CVCAH	Lincoln Family	Mecca	92254	57	\$0	\$25,080	\$0	\$0
97	Global CVCAH	Meridian Family	Sacramento	95828	47	\$0	\$25,850	\$0	\$0
98	Global CVCAH	Mirage Vista	Pixley	93256	55	\$0	\$24,200	\$0	\$0
99	Global CVCAH	Perris Isle Senior	Moreno Valley	92553	189	\$0	\$85,050	\$0	\$0
100	Global CVCAH	Sunnyview I	Delano	93215	70	\$0	\$29,750	\$0	\$0
101	Global CVCAH	Sunnyview II	Delano	93215	70	\$0	\$29,750	\$0	\$0
102	HIP Housing	Edgewater Isle	San Mateo	94401	92	\$29,343	\$0	\$21,893	\$21,893
103	Housing Authority of Fresno County	Maldonado Migrant Center	Firebaugh	93622	64	\$28,800	\$0	\$7,200	\$7,200
104	Housing Authority of the City of Fresno, CA	Dayton Square	Fresno	93726	66	\$29,370	\$0	\$7,343	\$7,343
105	Housing Authority of the City of Fresno, CA	El Cortez	Fresno	93726	48	\$27,840	\$0	\$6,960	\$6,960
106	Housing Authority of the City of Los Angeles	Independent Towers	Los Angeles	90018	196	\$58,698	\$0	\$58,690	\$58,690
107	Housing Authority of the City of Los Angeles	San Fernando Gardens	Pacoima	91331	448	\$0	\$200,978	\$0	\$0
108	Housing Authority of the City of Los Angeles	Union Towers	Los Angeles	90017	200	\$60,000	\$0	\$59,970	\$59,970
109	Housing Authority of the City of San Buenaventura	Buena Vida Family	Ventura	93004	20	\$0	\$11,925	\$0	\$0
110	Housing Authority of the City of San Buenaventura	Westview	Ventura	93001	100	\$0	\$44,963	\$0	\$0
111	Housing Authority of the County of Kern	Arvin FLC	Bakersfield	93307	88	\$0	\$74,800	\$0	\$0
112	Housing Authority of the County of Kern	Baker Street	Bakersfield	93305	37	\$0	\$22,200	\$5,550	\$5,550
113	Housing Authority of the County of Kern	Green Gardens	Bakersfield	93307	104	\$0	\$31,200	\$0	\$0
114	Housing Authority of the County of Kern	Homer Harrison	Delano	93215	50	\$0	\$30,000	\$7,500	\$7,500
115	Housing Authority of the County of Kern	Monterey St	Bakersfield	93305	16	\$0	\$15,808	\$0	\$0
116	Housing Authority of the County of Kern	Park Place Apartments	Bakersfield	93301	80	\$0	\$36,000	\$9,000	\$9,000
117	Housing Authority of the County of Kern	Parkview	Arvin	93203	28	\$0	\$27,300	\$0	\$0
118	Housing Authority of the County of Kern	Pinewood Glen	Bakersfield	93309	110	\$0	\$33,000	\$8,250	\$8,250

Item	RECIPIENT	PROJECT	CITY	ZIP	UNITS	GRANT AWARD 2015	GRANT AWARD 2016	PAYMENTS 2016	TOTAL PAID
119	Housing Authority of the County of Kern	Plaza Towers	Bakersfield	93304	117	\$0	\$35,100	\$8,775	\$8,775
120	Housing Authority of the County of Kern	Plaza Towers Annex	Bakersfield	93304	82	\$0	\$36,900	\$9,225	\$9,225
121	Housing Authority of the County of Kern	Quincy St. Apartments	Delano	93215	32	\$0	\$19,200	\$4,800	\$4,800
122	Housing Authority of the County of Kern	Residence at Old Town Kern	Bakersfield	93305	30	\$0	\$18,000	\$4,500	\$4,500
123	Housing Authority of the County of Kern	Residence at West Columbus	Bakersfield	93301	50	\$0	\$30,000	\$7,500	\$7,500
124	Housing Authority of the County of Kern	Village Congressional	Arvin	93203	60	\$0	\$51,000	\$0	\$0
125	Housing Authority of the County of Kern	Village Park Apartments	Bakersfield	93301	60	\$0	\$27,000	\$6,750	\$6,750
126	Housing Authority of the County of San Bernardino	1077 & 1079 W. 11th Street	San Bernardino	92411	2	\$0	\$1,191	\$0	\$0
127	Housing Authority of the County of San Bernardino	1297 & 1299 Turrill Ave	San Bernardino	92411	2	\$0	\$1,191	\$0	\$0
128	Housing Authority of the County of San Bernardino	1315-1325 N. Davidson	San Bernardino	92411	6	\$0	\$3,599	\$0	\$0
129	Housing Authority of the County of San Bernardino	1470 Lynwood	San Bernardino	92404	15	\$0	\$8,960	\$0	\$0
130	Housing Authority of the County of San Bernardino	1738 W 9th St - Maplewood Homes	San Bernardino	92411	296	\$0	\$74,999	\$0	\$0
131	Housing Authority of the County of San Bernardino	205-211 2nd Street	San Bernardino	92408	4	\$0	\$2,400	\$0	\$0
132	Housing Authority of the County of San Bernardino	2165 West Mill Street	San Bernardino	92410	10	\$0	\$5,907	\$0	\$0
133	Housing Authority of the County of San Bernardino	217-227 4th Street	San Bernardino	92410	6	\$0	\$3,599	\$0	\$0
134	Housing Authority of the County of San Bernardino	224 Merrill Apartments	Rialto	92376	24	\$0	\$14,297	\$0	\$0
135	Housing Authority of the County of San Bernardino	2265 Canyon Villas	Colton	92324	46	\$0	\$22,352	\$0	\$0
136	Housing Authority of the County of San Bernardino	4181 North E Street	San Bernardino	92407	24	\$0	\$14,397	\$0	\$0
137	Housing Authority of the County of San Bernardino	501 E Virginia Way - Sunset Pointe	Barstow	92311	144	\$0	\$43,200	\$0	\$0
138	Housing Authority of the County of San Bernardino	539 B Street, Colton	Colton	92324	40	\$0	\$19,828	\$0	\$0
139	Housing Authority of the County of San Bernardino	630 & 632 J Street	San Bernardino	92411	2	\$0	\$1,191	\$0	\$0
140	Housing Authority of the County of San Bernardino	725 Brockton	Redlands	92374	8	\$0	\$4,766	\$0	\$0
141	Housing Authority of the County of San Bernardino	753 Evans	San Bernardino	92405	24	\$0	\$14,397	\$0	\$0
142	Housing Authority of the County of San Bernardino	754-776 N. Berkeley Street	San Bernardino	92410	6	\$0	\$3,599	\$0	\$0
143	Housing Authority of the County of San Bernardino	755 E Virginia Way - Sunrise Vista	Barstow	92311	156	\$0	\$46,800	\$0	\$0
144	Housing Authority of the County of San Bernardino	772 Pine Street, Colton	Colton	92324	85	\$0	\$38,159	\$0	\$0
145	Housing Authority of the County of San Bernardino	8181 Redwood Terrace	Fontana	92335	68	\$0	\$30,507	\$0	\$0
146	Housing Authority of the County of San Bernardino	8980 Date St - Las Palmas	Fontana	92335	16	\$0	\$9,531	\$0	\$0
147	Housing Authority of the County of San Bernardino	Stone Creek 14	Loma Linda	92354	14	\$0	\$8,390	\$0	\$0
148	Housing Authority of the County of San Bernardino	Stone Creek 20	Loma Linda	92354	20	\$0	\$11,914	\$0	\$0

Item	RECIPIENT	PROJECT	CITY	ZIP	UNITS	GRANT AWARD 2015	GRANT AWARD 2016	PAYMENTS 2016	TOTAL PAID
149	Housing Authority of the County of San Bernardino	Stone Creek 8	Loma Linda	92354	8	\$0	\$4,766	\$0	\$0
150	Housing Authority of the County of Santa Barbara	Lompoc Gardens I	Lompoc	93436	40	\$0	\$33,800	\$0	\$0
151	Housing Authority of the County of Santa Barbara	Lompoc Gardens II	Lompoc	93436	35	\$0	\$33,075	\$0	\$0
152	Housing Authority of the County of Santa Barbara	Miller Plaza	Lompoc	93436	24	\$0	\$22,128	\$0	\$0
153	Housing Authority of the County of Santa Barbara	Parkside Garden Apartments	Lompoc	93436	48	\$0	\$28,800	\$0	\$0
154	LONG BEACH AFFORDABLE HOUSING COALITION	BEVERLY MANOR	LOS ANGELES	90302	59	\$26,550	\$0	\$15,932	\$15,932
155	LONG BEACH AFFORDABLE HOUSING COALITION	GRACE MANOR	CARSON	90745	38	\$21,517	\$0	\$12,286	\$12,286
156	LONG BEACH AFFORDABLE HOUSING COALITION	METRO WEST APARTMENTS	Los Angeles	90247	40	\$18,176	\$0	\$8,576	\$8,576
157	LONG BEACH AFFORDABLE HOUSING COALITION	VERMONT A VENUE APARTMENTS	GARDENA	90247	32	\$19,184	\$0	\$11,063	\$11,063
158	Mary Elizabeth Inn	Mary Elizabeth Inn	San Francisco	94109	92	\$0	\$40,271	\$0	\$0
159	Mary Elizabeth Inn	The Verona	San Francisco	94102	65	\$0	\$28,278	\$0	\$0
160	Mercy Housing California	Land Park Woods	Sacramento	95818	75	\$0	\$33,675	\$0	\$0
161	Mercy Housing California	Mather Veterans Village	Mather	95655	50	\$21,663	\$0	\$16,415	\$16,415
162	Mercy Housing California	Sunset Valley Duplexes	Wheatland	95692	88	\$31,520	\$0	\$9,220	\$21,320
163	Mercy Housing Calwest	1880 Pine	San Francisco	94109	113	\$0	\$33,718	\$0	\$0
164	Mercy Housing Calwest	2698 California	San Francisco	94115	40	\$0	\$18,713	\$0	\$0
165	Mercy Housing Calwest	345 Arguello	San Francisco	94118	69	\$0	\$22,343	\$0	\$0
166	Mercy Housing Calwest	JFK Towers	San Francisco	94115	98	\$0	\$43,645	\$0	\$0
167	MidPen Housing	Celestina Gardens	Sonoma	95476	40	\$0	\$22,589	\$0	\$0
168	MidPen Housing	Fetters Apartments	Sonoma	95476	60	\$0	\$26,770	\$0	\$0
169	MidPen Housing	St. Stephens Senior Housing	Santa Cruz	95062	40	\$0	\$23,509	\$0	\$0
170	MidPen Housing Corporation	Donner Lofts	San Jose	95112	102	\$30,443	\$0	\$30,443	\$30,443
171	MidPen Housing Corporation	Foster Square	Foster City	94404	66	\$28,833	\$0	\$28,833	\$28,833
172	MidPen Housing Corporation	Laguna Commons	Fremont	94538	64	\$0	\$28,752	\$28,432	\$28,432
173	Mid-Peninsula The Farm, Inc	University Avenue Senior	East Palo Alto	94303	41	\$0	\$24,193	\$0	\$0
174	Mid-Peninsula The Farm, Inc.	6800 Mission	Daly City	94014	52	\$0	\$23,400	\$9,799	\$9,799
175	Mid-Peninsula The Farm, Inc.	Onizuka Crossing	Sunnyvale	94085	58	\$23,572	\$0	\$23,572	\$23,572
176	Mid-Peninsula The Farm, Inc.	Sequoia Belle Haven	Menlo Park	94025	90	\$0	\$39,794	\$0	\$0
177	Mutual Housing California	Lemon Hill Townhomes	Sacramento	95824	74	\$31,885	\$0	\$8,135	\$30,035
178	Mutual Housing California	Los Robles	Sacramento	95823	80	\$35,288	\$0	\$9,606	\$34,293

Item	RECIPIENT	PROJECT	CITY	ZIP	UNITS	GRANT AWARD 2015	GRANT AWARD 2016	PAYMENTS 2016	TOTAL PAID
179	Mutual Housing California	Mutual Housing at Foothill Farms	Sacramento	95841	98	\$0	\$43,575	\$0	\$0
180	Napa Valley Community Housing	Arroyo Grande Villas	Yountville	94599	25	\$0	\$20,625	\$0	\$0
181	Napa Valley Community Housing	Magnolia Park Townhomes	Napa	94559	29	\$0	\$23,925	\$0	\$0
182	Napa Valley Community Housing	Mayacamas Village	Napa	94559	51	\$0	\$41,565	\$0	\$0
183	Napa Valley Community Housing	Napa Park Homes	Napa	94558	140	\$0	\$63,700	\$0	\$0
184	Napa Valley Community Housing	Oak Creek Terrace	Napa	94558	41	\$0	\$30,955	\$0	\$0
185	Napa Valley Community Housing	Pecan Court Apartments	Napa	94559	25	\$0	\$23,875	\$0	\$0
186	Napa Valley Community Housing	Silverado Creek Apartments	Napa	94558	102	\$0	\$66,810	\$0	\$0
187	Napa Valley Community Housing	The Reserve of Napa	Napa	94558	117	\$0	\$64,350	\$0	\$0
188	Napa Valley Community Housing	Villa de Adobe Apartments	Napa	94559	16	\$0	\$15,600	\$0	\$0
189	Peoples' Self-Help Housing	Canyon Creek Apartments	Paso Robles	93401	68	\$0	\$30,600	\$0	\$0
190	Peoples' Self-Help Housing	Cawelti Court	Arroyo Grande	93420	28	\$0	\$16,800	\$0	\$0
191	Peoples' Self-Help Housing	College Park	Lompoc	93462	35	\$0	\$21,000	\$5,250	\$5,250
192	Peoples' Self-Help Housing	Courtland Street Apartments	Arroyo Grande	93420	36	\$0	\$21,600	\$5,400	\$5,400
193	Peoples' Self-Help Housing	Creekside Gardens	Paso Robles	93401	29	\$0	\$17,400	\$0	\$0
194	Peoples' Self-Help Housing	Dahlia Court	Carpinteria	93013	55	\$0	\$52,250	\$0	\$0
195	Peoples' Self-Help Housing	Dahlia Court II	Carpinteria	93013	33	\$0	\$31,350	\$0	\$0
196	Peoples' Self-Help Housing	El Patio Hotel	Ventura	93001	42	\$0	\$25,200	\$0	\$0
197	Peoples' Self-Help Housing	Isle Vista Apartments	Isla Vista	93117	56	\$0	\$30,800	\$0	\$0
198	Peoples' Self-Help Housing	Lachen Tara	Avila Beach	93424	29	\$0	\$17,400	\$0	\$0
199	Peoples' Self-Help Housing	Ladera Street Apartments	Santa Barbara	93101	51	\$0	\$28,050	\$0	\$0
200	Peoples' Self-Help Housing	Los Adobes de Maria I	Santa Maria	93458	65	\$0	\$29,250	\$7,312	\$7,312
201	Peoples' Self-Help Housing	Los Adobes de Maria II	Santa Maria	93458	52	\$0	\$23,400	\$5,850	\$5,850
202	Peoples' Self-Help Housing	Los Robles Terrace	Paso Robles	93446	40	\$0	\$24,000	\$0	\$0
203	Peoples' Self-Help Housing	Mariposa Town Homes	Orcutt	93455	80	\$0	\$76,000	\$0	\$0
204	Peoples' Self-Help Housing	Ocean View Manor	Morro Bay	93442	40	\$0	\$24,000	\$0	\$0
205	Peoples' Self-Help Housing	Oceanside Gardens	Morro Bay	93442	21	\$0	\$12,600	\$0	\$0
206	Peoples' Self-Help Housing	Pacific View Apartments	Morro Bay	93442	26	\$0	\$15,600	\$0	\$0
207	Peoples' Self-Help Housing	River View Townhomes	Guadalupe	93434	80	\$0	\$36,000	\$0	\$0
208	Peoples' Self-Help Housing	Rolling Hills Apartments	Templeton	93465	53	\$0	\$49,025	\$0	\$0

Item	RECIPIENT	PROJECT	CITY	ZIP	UNITS	GRANT AWARD 2015	GRANT AWARD 2016	PAYMENTS 2016	TOTAL PAID
209	Peoples' Self-Help Housing	Schoolhouse Lane Apartments	Cambria	93428	24	\$0	\$14,400	\$3,600	\$3,600
210	Peoples' Self-Help Housing	Storke Ranch Apartments	Goleta	93117	36	\$0	\$27,180	\$0	\$0
211	Peoples' Self-Help Housing	Templeton Place	Templeton	93465	29	\$0	\$17,400	\$4,350	\$4,350
212	Peoples' Self-Help Housing	The Villas at Higuera	San Luis Obispo	93401	28	\$0	\$16,800	\$0	\$0
213	Peoples' Self-Help Housing	Victoria Hotel	Santa Barbara	93101	28	\$0	\$16,800	\$4,200	\$4,200
214	Peoples' Self-Help Housing	Victoria Street Bungalows	Santa Barbara	93101	16	\$0	\$15,200	\$0	\$0
215	Peoples' Self-Help Housing	Villa La Esperanza	Goleta	93117	83	\$0	\$53,950	\$0	\$0
216	PEP Housing	10 Toussin	Kentfield	94904	13	\$7,557	\$0	\$0	\$6,492
217	PEP Housing	1275 Lindberg	Petaluma	94954	16	\$8,296	\$0	\$0	\$7,161
218	PEP Housing	167 Edith	Petaluma	94952	24	\$10,675	\$0	\$0	\$9,300
219	PEP Housing	210 Douglas	Petaluma	94952	24	\$10,287	\$0	\$0	\$9,197
220	PEP Housing	575 Vallejo	Petaluma	94952	45	\$16,822	\$0	\$0	\$14,566
221	PEP Housing	579 Vallejo	Petaluma	94952	40	\$12,295	\$0	\$0	\$11,419
222	PEP Housing	Casa Grande	Petaluma	94954	58	\$24,029	\$0	\$20,619	\$20,619
223	PEP Housing	Caulfield Lane	Petaluma	94954	22	\$12,501	\$0	\$9,661	\$9,661
224	PEP Housing	Mountain View	Petaluma	94952	24	\$10,087	\$0	\$9,617	\$9,617
225	Satellite Affordable Housing Associates	Columbia Park Manor	Pittsburg	94565	79	\$0	\$21,162	\$0	\$0
226	Satellite Affordable Housing Associates	Lakeside Senior Apartments	Oakland	94606	100	\$0	\$23,173	\$0	\$0
227	Satellite Affordable Housing Associates	Lawrence Moore	Berkeley	94706	46	\$0	\$15,977	\$0	\$0
228	Satellite Affordable Housing Associates	Linda Glen	Oakland	94611	42	\$0	\$15,238	\$0	\$0
229	Satellite Affordable Housing Associates	Otterbein Manor	Oakland	94618	44	\$0	\$15,598	\$0	\$0
230	Satellite Affordable Housing Associates	Sacramento Senior Homes	Berkeley	94703	40	\$0	\$16,535	\$0	\$0
231	Satellite Affordable Housing Associates (SAHA)	Amistad House	Oakland	94709	60	\$0	\$22,235	\$0	\$0
232	Satellite Affordable Housing Associates (SAHA)	Beth Asher	Oakland	94602	50	\$0	\$30,125	\$0	\$0
233	Satellite Affordable Housing Associates (SAHA)	Petaluma Avenue Homes	Sebastopol	95472	45	\$0	\$17,994	\$0	\$0
234	Satellite Affordable Housing Associates (SAHA)	Satellite Central	Oakland	94612	152	\$0	\$33,461	\$0	\$0
235	Satellite Affordable Housing Associates (SAHA)	Stuart Pratt	Berkeley	94704	44	\$0	\$26,638	\$0	\$0
236	Satellite Affordable Housing Associates (SAHA)	Valdez Plaza	Oakland	94611	150	\$0	\$29,400	\$0	\$0
237	Self Help Enterprises	ALMOND COURT PARTNERS	Wasco	93280	36	\$21,600	\$0	\$21,600	\$21,600
238	Self Help Enterprises	CALIENTE CREEK PARTNERS	ARVIN	93203	46	\$27,600	\$0	\$27,600	\$27,600

Item	RECIPIENT	PROJECT	CITY	ZIP	UNITS	GRANT AWARD 2015	GRANT AWARD 2016	PAYMENTS 2016	TOTAL PAID
239	Self Help Enterprises	NORTH PARK APARTMENTS HOUSING CORPORATION	BAKERSFIELD	93308	104	\$31,200	\$0	\$31,200	\$31,200
240	Self Help Enterprises	RANCHO LINDO PARTNERS	LAMONT	93241	44	\$0	\$35,200	\$26,400	\$26,400
241	Self Help Enterprises	ROLLING HILLS PARTNERS	NEWMAN	95360	52	\$0	\$28,600	\$21,450	\$21,450
242	Self Help Enterprises	SOLINAS VILLAGE aka SELF HELP COMMUNITIES 1, LLC	MCFARLAND	93250	52	\$0	\$35,100	\$26,325	\$26,325
243	Self Help Enterprises	SUNRISE VILLA PARTNERS	WASCO	93280	44	\$26,400	\$0	\$26,400	\$26,400
244	Self Help Enterprises	VILLA HERMOSA PARTNERS	WASCO	93280	40	\$24,000	\$0	\$24,000	\$24,000
245	Self Help Enterprises	WASHINGTON PLAZA PARTNERS	EARLIMART	93219	44	\$26,400	\$0	\$26,400	\$26,400
246	Self-Help Enterprises	Cottonwood Creek	Madera	93637	40	\$22,800	\$0	\$22,800	\$22,800
247	Self-Help Enterprises	Lincoln Plaza	Hanford	93230	48	\$24,000	\$0	\$24,000	\$24,000
248	Self-Help Enterprises	Villa Del Rey	Del Rey	93616	48	\$28,800	\$0	\$28,800	\$28,800
249	Silvercrest, Inc. (non-profit)	Inyo Terrace	Fresno	93727	44	\$25,960	\$0	\$6,490	\$6,490
250	Silvercrest, Inc. (non-profit)	Pacific Gardens	Fresno	93727	56	\$0	\$28,800	\$0	\$0
251	Silvercrest, Inc. (non-profit)	Parc Grove Commons	Fresno	93703	215	\$64,400	\$0	\$64,400	\$64,400
252	Silvercrest, Inc. (non-profit)	Parc Grove Northwest	Fresno	93703	148	\$43,560	\$0	\$43,560	\$43,560
253	Silvercrest, Inc. (non-profit)	Yosemite Village	Fresno	93706	69	\$0	\$44,850	\$0	\$0
254	Surf Development Company	Central Plaza	Santa Maria	93454	112	\$0	\$61,040	\$0	\$0
255	Surf Development Company	Cypress Court	Lompoc	93436	60	\$0	\$27,000	\$0	\$0
256	Surf Development Company	Leland Park	Orcutt	93455	16	\$0	\$15,600	\$0	\$0
257	Surf Development Company	Palm Grove	Lompoc	93436	40	\$0	\$37,800	\$0	\$0
258	Surf Development Company	Parkview Apartments	Goleta	93117	20	\$0	\$15,210	\$0	\$0
259	Surf Development Company	Pescadero Lofts	Goleta	93117	33	\$0	\$19,173	\$0	\$0
260	Surf Development Company	Sandpiper Apartments	Goleta	93117	68	\$0	\$30,600	\$0	\$0
261	Surf Development Company	Santa Rita Village I	Lompoc	93436	36	\$0	\$21,600	\$0	\$0
262	Surf Development Company	Ted Zenich Gardens	Santa Maria	93454	24	\$0	\$14,400	\$0	\$0
263	Sutter Community Affordable Housing	Kristen Court Apartments	Live Oak	95953	56	\$0	\$25,038	\$0	\$0
264	Swords to Plowshares Veterans Rights Organization	The Fairfax Hotel	San Francisco	94109	43	\$9,353	\$0	\$0	\$8,909
265	Swords to Plowshares Veterans Rights Organization	The Stanford Hotel	San Francisco	94108	130	\$5,144	\$0	\$0	\$4,462
266	Tenderloin Neighborhood Development Corporation	Curran House	San Francisco	94102	67	\$0	\$24,966	\$0	\$0
267	Tenderloin Neighborhood Development Corporation	Dalt Hotel	San Francisco	94102	179	\$0	\$45,574	\$0	\$0
268	Tenderloin Neighborhood Development Corporation	Ritz Hotel	San Francisco	94102	88	\$0	\$30,252	\$0	\$0

Item	RECIPIENT	PROJECT	CITY	ZIP	UNITS	GRANT AWARD 2015	GRANT AWARD 2016	PAYMENTS 2016	TOTAL PAID
269	Tenderloin Neighborhood Development Corporation	SOMA Family Apartments	San Francisco	94103	74	\$0	\$27,767	\$0	\$0
270	Tenderloin Neighborhood Development Corporation	SOMA Studios	San Francisco	94103	88	\$0	\$31,344	\$0	\$0
271	The Banneker Homes, Inc.	Banneker Homes	San Francisco	94102	108	\$0	\$45,900	\$0	\$0
272	West Sacramento Housing Development Corporation	Patio Apartments	West Sacramento	95605	45	\$16,875	\$0	\$9,738	\$15,750
273	West Sacramento Housing Development Corporation	Washington Courtyards	West Sacramento	95605	90	\$23,100	\$0	\$9,375	\$20,850
274	West Sacramento Housing Development Corporation	West Capitol	West Sacramento	95691	125	\$32,113	\$0	\$15,212	\$32,112
275	Western Community Housing	Tiki Apartments	Huntington Park	90255	36	\$0	\$20,933	\$0	\$0
Grand Total					17,430	\$2,133,282	\$5,511,878	\$1,542,753	\$1,832,834

Attachment D: Approved Public Housing Adoption Grants

(As of 12/31/2016)⁵⁸

Item	RECIPIENT	PROJECT	CITY	ZIP	RESIDENTS	GRANT AWARD 2015	GRANT AWARD 2016	PAYMENTS 2016	TOTAL PAID
1	BRIDGE Housing Corporation	Armstrong Place Senior Housing	San Francisco	94124	152	\$0	\$36,970	\$0	\$0
2	BRIDGE Housing Corporation	Chestnut Creek Senior Housing	South San Francisco	94080	55	\$0	\$24,250	\$0	\$0
3	BRIDGE Housing Corporation	Chestnut Linden Court	Oakland	94607	410	\$0	\$34,170	\$0	\$0
4	BRIDGE Housing Corporation	Emeryvilla	Emeryville	94608	46	\$0	\$23,550	\$0	\$0
5	BRIDGE Housing Corporation	Geraldine Johnson Senior Housing	San Francisco	94124	74	\$0	\$29,130	\$0	\$0
6	BRIDGE Housing Corporation	Ironhorse at Central	Oakland	94607	251	\$0	\$30,030	\$0	\$0
7	BRIDGE Housing Corporation	Mandela Gateway Apartments	Oakland	94607	440	\$0	\$34,510	\$0	\$0
8	BRIDGE Housing Corporation	Natoma Family Apartments	San Francisco	94103	137	\$0	\$25,550	\$0	\$0
9	BRIDGE Housing Corporation	Richmond City Center	Richmond	94801	171	\$0	\$25,630	\$0	\$0
10	BRIDGE Housing Corporation	St. Joseph's Senior Apartments	Oakland	94601	103	\$0	\$33,130	\$0	\$0
11	BRIDGE Housing Corporation	Terraza Palmera at St. Josephs	Oakland	94601	171	\$0	\$26,090	\$0	\$0
12	Eden Housing, Inc.	801 Alma Family Apartments	Palo Alto	94301	156	\$0	\$12,880	\$0	\$0
13	Eden Housing, Inc.	Altenheim	Oakland	94602	199	\$0	\$19,380	\$0	\$0
14	Eden Housing, Inc.	Camphora	Soledad	93960	134	\$0	\$21,040	\$0	\$0
15	Eden Housing, Inc.	Carlow Court Apartments	Dublin	94568	74	\$0	\$12,880	\$0	\$0
16	Eden Housing, Inc.	Cottonwood Place Apartments	Fremont	94536	146	\$0	\$16,015	\$0	\$0
17	Eden Housing, Inc.	Studio 819 Apartments	Mountain View	94043	61	\$0	\$12,880	\$0	\$0
18	Eden Housing, Inc.	Weinreb Place	Hayward	94541	24	\$0	\$12,351	\$0	\$0
19	Eden Housing, Inc.	Wexford Way	Dublin	94568	416	\$0	\$12,880	\$0	\$0
20	Episcopal Community Services of San Francisco	Bishop Swing Community House	San Francisco	94103	135	\$0	\$49,959	\$0	\$0
21	Episcopal Community Services of San Francisco	Canon Barcus Community House	San Francisco	94103	153	\$0	\$49,520	\$0	\$0
22	Episcopal Community Services of San Francisco	Canon Kip Community House	San Francisco	94103	103	\$0	\$49,593	\$0	\$0
23	First Community Housing	Curtner Studios Digital Connections	San Jose	95125	200	\$25,756	\$0	\$0	\$0
24	First Community Housing	El Paseo Digital Connections	San Jose	95130	98	\$21,030	\$0	\$0	\$0
25	Housing Authority of the County of Los Angeles	Carmelitos Housing Development	Long Beach	90805	999	\$0	\$28,210	\$0	\$0
26	Housing Authority of the County of Los Angeles	Harbor Hills Housing Development	Lomita	90717	761	\$0	\$28,210	\$0	\$0
27	Housing Authority of the County of Los Angeles	Nueva Maravilla Housing Development	Los Angeles	90022	999	\$0	\$28,210	\$0	\$0
28	Jamboree Housing Corporation	Puerto del Sol Apartments	Long Beach	90802	498	\$0	\$23,567	\$5,280	\$5,280
29	Long Beach Affordable Housing Coalition (LBAHC)	Grace Manor	Carson	90745	100	\$0	\$25,007	\$0	\$0

⁵⁸ Local assistance expenditure/encumbrance information captured when expenditure/encumbrance made and validated with CALSTARS fiscal reports. No Public Housing Adoption projects have completed by the end of 2016.

Item	RECIPIENT	PROJECT	CITY	ZIP	RESIDENTS	GRANT AWARD 2015	GRANT AWARD 2016	PAYMENTS 2016	TOTAL PAID
30	Long Beach Affordable Housing Coalition (LBAHC)	Metro West Apts	Los Angeles	90044	67	\$0	\$25,347	\$0	\$0
31	Long Beach Affordable Housing Coalition (LBAHC)	Vermont Manor	Gardena	90247	78	\$0	\$23,987	\$0	\$0
32	Long Beach Affordable Housing Coalition (LBAHC)	West Park	Los Angeles	90043	196	\$0	\$34,561	\$0	\$0
33	Mutual Housing California	Lemon Hill	Sacramento	95824	282	\$0	\$34,550	\$0	\$0
34	Mutual Housing California	Mutual Housing at Sky Park	Sacramento	95823	258	\$0	\$36,370	\$0	\$0
35	Mutual Housing California	Mutual Housing at Spring Lake	Woodland	95776	335	\$0	\$29,710	\$0	\$0
36	Mutual Housing California	Mutual Housing at the Highlands	North Highlands	95660	141	\$0	\$40,780	\$0	\$0
37	Mutual Housing California	New Harmony	Davis	95618	195	\$0	\$31,455	\$0	\$0
38	Mutual Housing California	Owendale	Davis	95618	91	\$0	\$21,085	\$0	\$0
39	Petaluma Ecumenical Properties (PEP Housing)	575 Vallejo Street Senior Apartments Adoption	Petaluma	94952	46	\$10,550	\$0	\$7,023	\$7,023
40	Petaluma Ecumenical Properties (PEP Housing)	579 Vallejo Street Senior Apartments Adoption	Petaluma	94952	41	\$9,430	\$0	\$6,271	\$6,271
41	Petaluma Ecumenical Properties (PEP Housing)	Acacia Lane Senior Apartments Adoption	Santa Rosa	95409	47	\$10,190	\$0	\$6,772	\$6,772
42	Petaluma Ecumenical Properties (PEP Housing)	Casa Grande Senior Apartments Adoption	Petaluma	94954	60	\$13,350	\$0	\$9,030	\$9,030
43	Petaluma Ecumenical Properties (PEP Housing)	Caulfield Lane Senior Apartments Adoption	Petaluma	94954	23	\$5,220	\$0	\$3,512	\$3,512
44	Petaluma Ecumenical Properties (PEP Housing)	Kellgren Senior Apartments Adoption	Petaluma	94954	53	\$11,650	\$0	\$7,776	\$7,776
45	Satellite Affordable Housing Associates	Amistad House	Berkeley	94611	63	\$0	\$48,290	\$0	\$0
46	Satellite Affordable Housing Associates	Arboleda Apartments Adoption	Walnut Creek	94597	92	\$40,756	\$0	\$9,355	\$9,355
47	Satellite Affordable Housing Associates	Merritt Crossing Adoption	Oakland	94606	95	\$50,000	\$0	\$9,843	\$9,843
48	Satellite Affordable Housing Associates	Petaluma Avenue Homes	Sebastapol	95472	99	\$0	\$48,350	\$0	\$0
49	Satellite Affordable Housing Associates	Satellite Central	Oakland	94612	196	\$0	\$50,000	\$0	\$0
50	Satellite Affordable Housing Associates	Strawberry Creek Lodge Adoption	Berkeley	94702	150	\$49,970	\$0	\$11,226	\$11,226
51	Satellite Affordable Housing Associates	Valdez Plaza	Oakland	94611	194	\$0	\$50,000	\$0	\$0
52	Silvercrest, Inc. (non-profit)	Parc Grove Commons	Fresno	93703	559	\$38,894	\$0	\$10,000	\$10,000
53	Silvercrest, Inc. (non-profit)	Parc Grove Northwest	Fresno	93703	381	\$38,894	\$0	\$10,000	\$10,000
54	Silvercrest, Inc. (non-profit)	Viking Village	Fresno	93726	121	\$38,894	\$0	\$10,000	\$10,000
55	West Sacramento Housing Development Corporation	Patio Apartments	West Sacramento	95605	56	\$0	\$26,140	\$0	\$0
56	West Sacramento Housing Development Corporation	Washington Courtyards	West Sacramento	95605	279	\$0	\$45,760	\$0	\$0
57	West Sacramento Housing Development Corporation	West Capitol Courtyards	West Sacramento	95691	155	\$0	\$76,945	\$0	\$0
Grand Total					11,619	\$364,584	\$1,348,922	\$106,088	\$106,088
					Total Grant Awards:	\$1,713,506			

Attachment E: Served Status by Region and County



California
Public Utilities
Commission



STATE of CALIFORNIA
Wireline Broadband Availability
Maximum Advertised Speeds
As of December 31, 2015

CASF Consortia Region	Households (DoF* 1/1/16)	Served Households	Served Percentage	Households to get to 98%
San Joaquin	1,263,434	1,116,263	88.35%	121,903
Northeast	224,746	169,672	75.49%	50,579
Gold Country	250,964	207,695	82.76%	38,250
Central Coast	240,806	202,831	84.23%	33,159
Inland Empire	1,344,217	1,289,159	95.90%	28,173
San Diego Imperial	1,175,840	1,129,239	96.04%	23,085
Orange County (no consortium)	1,024,810	985,238	96.14%	19,076
North Bay North Coast	379,571	354,376	93.36%	17,604
Connected Capital	655,740	626,293	95.51%	16,332
Central Sierra	63,416	45,979	72.50%	16,169
Redwood Coast	71,526	54,230	75.82%	15,866
Pacific Coast	523,007	498,064	95.23%	14,919
Bay Area (no consortium)	1,248,443	1,220,831	97.79%	10,637
Upstate	43,819	34,351	78.39%	8,592
Eastern Sierra	13,889	7,493	53.95%	6,118
East Bay	1,109,698	1,087,079	97.96%	3,947
Los Angeles	3,308,022	3,294,439	99.59%	already > 98%
Total	12,941,948	12,323,230	95.22%	424,408

*Department of Finance. Household data from the California Department of Finance, January 1, 2016 estimate.

Sources:

Broadband availability data collected by the California Public Utilities Commission (CPUC) and validated by CPUC Staff. The CPUC defines "broadband service" as Internet connectivity with download / upload speeds of at least 768 Kbps / 200 Kbps. Such service is considered "available" if the provider can provision new requests for service within 10 business days. Urban vs Rural defined by the 2010 Census urban/rural indicator by census block.

Important note regarding data:

The CPUC's recent approval of service provider license transfers to Frontier and Charter included build-out requirements that will assist in broadband deployment in rural areas, but may not completely meet the 98 percent goal. At this time the CPUC does not have a list of all census blocks Frontier and Charter will serve as they have some discretion to target their build-out commitments. Additionally, some of the commitments may improve service in areas already deemed "served" on the CASF eligibility map, and thus would not increase the statewide count of "served households." Further, FCC support will also lead to increased broadband deployment in rural communities.

In Summer 2015, the three largest wireline telephone corporations in the State accepted CAF Phase II support. Here also, the overall effect on the CAF II commitments is unclear for the reasons above and additionally because CAF II commitments extend to "eligible locations", and do not include all households and the Program's minimum performance standard for upload speed is 500 Kbps below the CASF upload speed standard of 1.5 Mbps.



**California
Public Utilities
Commission**



STATE of CALIFORNIA Wireline Broadband Availability

Maximum Advertised Speeds

As of December 31, 2015

County	CASF Consortia Region	Household(D of 1/1/16)*	Served HH	Served %	98% HH	98% Gap (HH)
Alameda	East Bay	569,029	560,910	98.57%	557,648	exceeds 98%
Alpine	Gold Country	493	258	52.31%	483	225
Amador	Central Sierra	14,349	12,124	84.50%	14,062	1,938
Butte	Northeast	88,666	78,330	88.34%	86,893	8,562
Calaveras	Central Sierra	18,906	12,977	68.64%	18,528	5,551
Colusa	Upstate	7,263	5,865	80.75%	7,118	1,253
Contra Costa	East Bay	392,848	385,252	98.07%	384,991	exceeds 98%
Del Norte	Redwood Coast	9,744	9,099	93.38%	9,549	450
El Dorado	Gold Country	69,637	53,265	76.49%	68,244	14,979
Fresno	San Joaquin	302,936	270,523	89.30%	296,877	26,354
Glenn	Upstate	10,019	6,370	63.58%	9,819	3,449
Humboldt	Redwood Coast	55,986	43,696	78.05%	54,866	11,171
Imperial	San Diego Imperial	49,811	42,977	86.28%	48,815	5,837
Inyo	Eastern Sierra	8,010	6,385	79.71%	7,850	1,465
Kern	San Joaquin	264,953	246,986	93.22%	259,654	12,667
Kings	San Joaquin	42,346	35,016	82.69%	41,499	6,483
Lake	Upstate	26,537	22,116	83.34%	26,006	3,890
Lassen	Northeast	9,762	5,967	61.13%	9,567	3,599
Los Angeles	Los Angeles	3,308,022	3,294,439	99.59%	3,241,862	exceeds 98%
Madera	San Joaquin	44,322	39,950	90.14%	43,436	3,485
Marin	North Bay North Coast	103,127	100,250	97.21%	101,064	815
Mariposa	Central Sierra	7,871	5,340	67.84%	7,714	2,374
Mendocino	North Bay North Coast	34,226	23,006	67.22%	33,541	10,535
Merced	San Joaquin	79,530	66,079	83.09%	77,939	11,860
Modoc	Northeast	4,072	1,695	41.63%	3,991	2,295
Mono	Eastern Sierra	5,879	1,108	18.84%	5,761	4,654
Monterey	Central Coast	126,182	96,074	76.14%	123,658	27,585
Napa	North Bay North Coast	50,117	46,318	92.42%	49,115	2,796
Nevada	Gold Country	40,167	28,804	71.71%	39,364	10,559
Orange	Orange County (no consortium)	1,024,810	985,238	96.14%	1,004,314	19,076
Placer	Gold Country	139,235	125,368	90.04%	136,450	11,083
Plumas	Northeast	8,540	2,283	26.74%	8,369	6,086
Riverside	Inland Empire	713,205	692,600	97.11%	698,941	6,341
Sacramento	Connected Capital	526,915	511,723	97.12%	516,377	4,653

County	CASF Consortia Region	Household(D oF 1/1/16)*	Served HH	Served %	98% HH	98% Gap (HH)
San Bernardino	Inland Empire	631,012	596,559	94.54%	618,392	21,832
San Diego	San Diego Imperial	1,126,029	1,086,261	96.47%	1,103,509	17,247
San Francisco	Bay Area (no consortium)	359,416	358,510	99.75%	352,228	exceeds 98%
San Joaquin	San Joaquin	226,579	210,123	92.74%	222,047	11,924
San Luis Obispo	Pacific Coast	103,964	92,942	89.40%	101,885	8,943
San Mateo	Bay Area (no consortium)	260,940	257,433	98.66%	255,721	exceeds 98%
Santa Barbara	Pacific Coast	145,757	136,865	93.90%	142,842	5,976
Santa Clara	Bay Area (no consortium)	628,087	604,888	96.31%	615,525	10,637
Santa Cruz	Central Coast	97,163	92,526	95.23%	95,220	2,694
Shasta	Northeast	70,426	54,965	78.05%	69,017	14,053
Sierra	Gold Country	1,432	0	0.00%	1,403	1,403
Siskiyou	Northeast	19,351	14,532	75.10%	18,964	4,432
Solano	East Bay	147,821	140,918	95.33%	144,865	3,947
Sonoma	North Bay North Coast	192,101	184,802	96.20%	188,259	3,457
Stanislaus	San Joaquin	168,204	157,442	93.60%	164,840	7,398
Sutter	Connected Capital	31,504	28,581	90.72%	30,874	2,293
Tehama	Northeast	23,929	11,899	49.73%	23,450	11,551
Trinity	Redwood Coast	5,796	1,435	24.76%	5,680	4,245
Tulare	San Joaquin	134,564	90,143	66.99%	131,873	41,729
Tuolumne	Central Sierra	22,290	15,538	69.71%	21,844	6,307
Ventura	Pacific Coast	273,286	268,256	98.16%	267,820	exceeds 98%
Yolo	Connected Capital	72,088	66,402	92.11%	70,646	4,245
Yuba	Connected Capital	25,233	19,587	77.63%	24,728	5,141
By County Total:		12,941,948	12,323,230	95.22%	12,683,109	424,408
Aggregate State Total:		12,941,948	12,323,230	95.2%	12,683,109	359,880

Sources:

Broadband availability data collected by the California Public Utilities Commission (CPUC) and validated by CPUC Staff. The CPUC defines "broadband service" as Internet connectivity with download / upload speeds of at least 768 Kbps / 200 Kbps. Such service is considered "available" if the provider can provision new requests for service within 10 business days. Urban vs Rural defined by the 2010 Census urban/rural indicator by census block. Household data from the California Department of Finance, January 1, 2016 estimate.



**STATE of CALIFORNIA
Wireline Broadband Availability**

**Maximum Advertised Speeds
(as of December 31, 2015)**

Page 1 of 2

County	All Households (CA DOF 1/1/2016)	Served Households (Wireline broadband is available at speeds of at least 6 Mbps down AND 1.5 Mbps up)		Underserved Households (Wireline broadband is available, but at speeds lower than 6 Mbps down OR 1.5 Mbps up)		Unserved Households (Wireline broadband is either not present, or is slower than 768 Kbps down OR 200 Kbps up)	
		Number	Percent	Number	Percent	Number	Percent
California	12,941,948	12,323,230	95.2 %	325,955	2.5 %	292,764	2.3 %
Alameda	569,029	560,910	98.6 %	2,850	0.5 %	5,269	0.9 %
Alpine	493	258	52.3 %	107	21.7 %	128	26.0 %
Amador	14,349	12,124	84.5 %	1,194	8.3 %	1,031	7.2 %
Butte	88,666	78,330	88.3 %	4,680	5.3 %	5,656	6.4 %
Calaveras	18,906	12,977	68.6 %	3,415	18.1 %	2,514	13.3 %
Colusa	7,263	5,865	80.7 %	537	7.4 %	861	11.9 %
Contra Costa	392,848	385,252	98.1 %	3,086	0.8 %	4,510	1.1 %
Del Norte	9,744	9,099	93.4 %	6	0.1 %	639	6.6 %
El Dorado	69,637	53,265	76.5 %	10,184	14.6 %	6,188	8.9 %
Fresno	302,936	270,523	89.3 %	17,225	5.7 %	15,188	5.0 %
Glenn	10,019	6,370	63.6 %	1,814	18.1 %	1,834	18.3 %
Humboldt	55,986	43,696	78.0 %	4,016	7.2 %	8,274	14.8 %
Imperial	49,811	42,977	86.3 %	4,045	8.1 %	2,789	5.6 %
Inyo	8,010	6,385	79.7 %	332	4.1 %	1,293	16.1 %
Kern	264,953	246,986	93.2 %	6,463	2.4 %	11,503	4.3 %
Kings	42,346	35,016	82.7 %	3,712	8.8 %	3,618	8.5 %
Lake	26,537	22,116	83.3 %	1,807	6.8 %	2,614	9.9 %
Lassen	9,762	5,967	61.1 %	2,718	27.8 %	1,077	11.0 %
Los Angeles	3,308,022	3,294,439	99.6 %	6,409	0.2 %	7,175	0.2 %
Madera	44,322	39,950	90.1 %	1,115	2.5 %	3,257	7.3 %
Marin	103,127	100,250	97.2 %	1,806	1.8 %	1,071	1.0 %
Mariposa	7,871	5,340	67.8 %	1,154	14.7 %	1,377	17.5 %
Mendocino	34,226	23,006	67.2 %	2,310	6.8 %	8,909	26.0 %
Merced	79,530	66,079	83.1 %	7,145	9.0 %	6,306	7.9 %
Modoc	4,072	1,695	41.6 %	1,498	36.8 %	879	21.6 %

County	All Households (CA DOF 1/1/2016)	Served Households (Wireline broadband is available at speeds of at least 6 Mbps down AND 1.5 Mbps up)		Underserved Households (Wireline broadband is available, but at speeds lower than 6 Mbps down OR 1.5 Mbps up)		Unserved Households (Wireline broadband is either not present, or is slower than 768 Kbps down OR 200 Kbps up)	
		Number	Percent	Number	Percent	Number	Percent
Mono	5,879	1,108	18.8 %	3,338	56.8 %	1,433	24.4 %
Monterey	126,182	96,074	76.1 %	23,176	18.4 %	6,932	5.5 %
Napa	50,117	46,318	92.4 %	1,505	3.0 %	2,293	4.6 %

Sources:

Broadband availability data collected by the California Public Utilities Commission (CPUC) and validated by CPUC staff. The CPUC defines "broadband service" as Internet connectivity with download / upload speeds of at least 768 Kbps / 200 Kbps. Such service is considered "available" if the provider can provision new requests for service within 10 business days. Urban vs Rural defined by the 2010 Census urban/rural indicator by census block.

Household data from the California Department of Finance, January 1, 2016 estimate.





STATE of CALIFORNIA

Wireline Broadband Availability

Maximum Advertised Speeds
As of December 31, 2015

Page 2 of 2

County	All Households (HH) (CA DOF 1/1/2015)	Served Households (Wireline broadband is available at speeds of at least 6 Mbps down AND 1.5 Mbps up)		Underserved Households (Wireline broadband is available, but at speeds lower than 6 Mbps down OR 1.5 Mbps up)		Unserved Households (Wireline broadband is either not present, or is slower than 768 Kbps down OR 200 Kbps up)	
		HH	Percent	HH	Percent	HH	Percent
Nevada	40,167	28,804	71.7 %	7,193	17.9 %	4,170	10.4 %
Orange	1,024,810	985,238	96.1 %	25,419	2.5 %	14,153	1.4 %
Placer	139,235	125,368	90.0 %	7,370	5.3 %	6,497	4.7 %
Plumas	8,540	2,283	26.7 %	3,974	46.5 %	2,283	26.7 %
Riverside	713,205	692,600	97.1 %	7,489	1.1 %	13,116	1.8 %
Sacramento	526,915	511,723	97.1 %	9,125	1.7 %	6,067	1.2 %
San Benito	17,461	14,231	81.5 %	1,735	9.9 %	1,495	8.6 %
San Bernardino	631,012	596,559	94.5 %	16,871	2.7 %	17,581	2.8 %
San Diego	1,126,029	1,086,261	96.5 %	13,296	1.2 %	26,472	2.4 %
San Francisco	359,416	358,510	99.7 %	791	0.2 %	115	0.0 %

County	All Households (HH) (CA DOF 1/1/2015)	Served Households (Wireline broadband is available at speeds of at least 6 Mbps down AND 1.5 Mbps up)		Underserved Households (Wireline broadband is available, but at speeds lower than 6 Mbps down OR 1.5 Mbps up)		Unserved Households (Wireline broadband is either not present, or is slower than 768 Kbps down OR 200 Kbps up)	
		HH	Percent	HH	Percent	HH	Percent
San Joaquin	226,579	210,123	92.7 %	6,939	3.1 %	9,517	4.2 %
San Luis Obispo	103,964	92,942	89.4 %	7,563	7.3 %	3,459	3.3 %
San Mateo	260,940	257,433	98.7 %	1,990	0.8 %	1,518	0.6 %
Santa Barbara	145,757	136,865	93.9 %	5,664	3.9 %	3,227	2.2 %
Santa Clara	628,087	604,888	96.3 %	8,525	1.4 %	14,673	2.3 %
Santa Cruz	97,163	92,526	95.2 %	2,639	2.7 %	1,998	2.1 %
Shasta	70,426	54,965	78.0 %	11,872	16.9 %	3,589	5.1 %
Sierra	1,432	0	0.0 %	705	49.2 %	727	50.8 %
Siskiyou	19,351	14,532	75.1 %	2,036	10.5 %	2,784	14.4 %
Solano	147,821	140,918	95.3 %	2,099	1.4 %	4,804	3.2 %
Sonoma	192,101	184,802	96.2 %	2,861	1.5 %	4,438	2.3 %
Stanislaus	168,204	157,442	93.6 %	6,406	3.8 %	4,356	2.6 %
Sutter	31,504	28,581	90.7 %	1,670	5.3 %	1,253	4.0 %
Tehama	23,929	11,899	49.7 %	8,757	36.6 %	3,273	13.7 %
Trinity	5,796	1,435	24.8 %	254	4.4 %	4,107	70.9 %
Tulare	134,564	90,143	67.0 %	32,206	23.9 %	12,215	9.1 %
Tuolumne	22,290	15,538	69.7 %	3,897	17.5 %	2,855	12.8 %
Ventura	273,286	268,256	98.2 %	3,222	1.2 %	1,808	0.7 %
Yolo	72,088	66,402	92.1 %	3,018	4.2 %	2,669	3.7 %
Yuba	25,233	19,587	77.6 %	2,718	10.8 %	2,928	11.6 %

Sources:

Broadband availability data collected by the California Public Utilities Commission (CPUC) and validated by CPUC staff. The CPUC defines "broadband service" as Internet connectivity with download / upload speeds of at least 768 Kbps / 200 Kbps. Such service is considered "available" if the provider can provision new requests for service within 10 business days. Urban vs Rural defined by the 2010 Census urban/rural indicator by census block.

Household data from the California Department of Finance, January 1, 2016 estimate.