



Greenhorn Creek Canyon & Banner Lava Cap Road Broadband Project

Oasis Broadband

15695 Donner Pass Road
Truckee, CA 96160

555 S Auburn St H
Colfax, CA 95713

Contact person: Eric Bergerson - ericb@oasisbroadband.net - 530-820-1031 x105

8.0 Application Item 0

This project will not require any middle mile infrastructure to be built.

8.1 Application Item 1 – Project Summary (Distributed Publicly)

- *Company/Applicant's name.*

ExWire Inc, dba Oasis Broadband

- *CPCN/U-Number or WIR or pending CPCN/WIR application number.*

Our CPCN application has been submitted.

- *Contact person.*

Eric Bergerson - (530) 820-1031 x105 - ericb@Oasisbroadband.net

- *Named project location (Community/County).*

The Greenhorn Creek Canyon & Banner Lava Cap Road Broadband Project incorporates the area around these two major terrain features. The project area will be in a mostly unincorporated area of Nevada County to the east of Grass Valley and north of Rollins Reservoir.

- *Project type (Last-mile or Hybrid Last-mile/Middle-mile).*

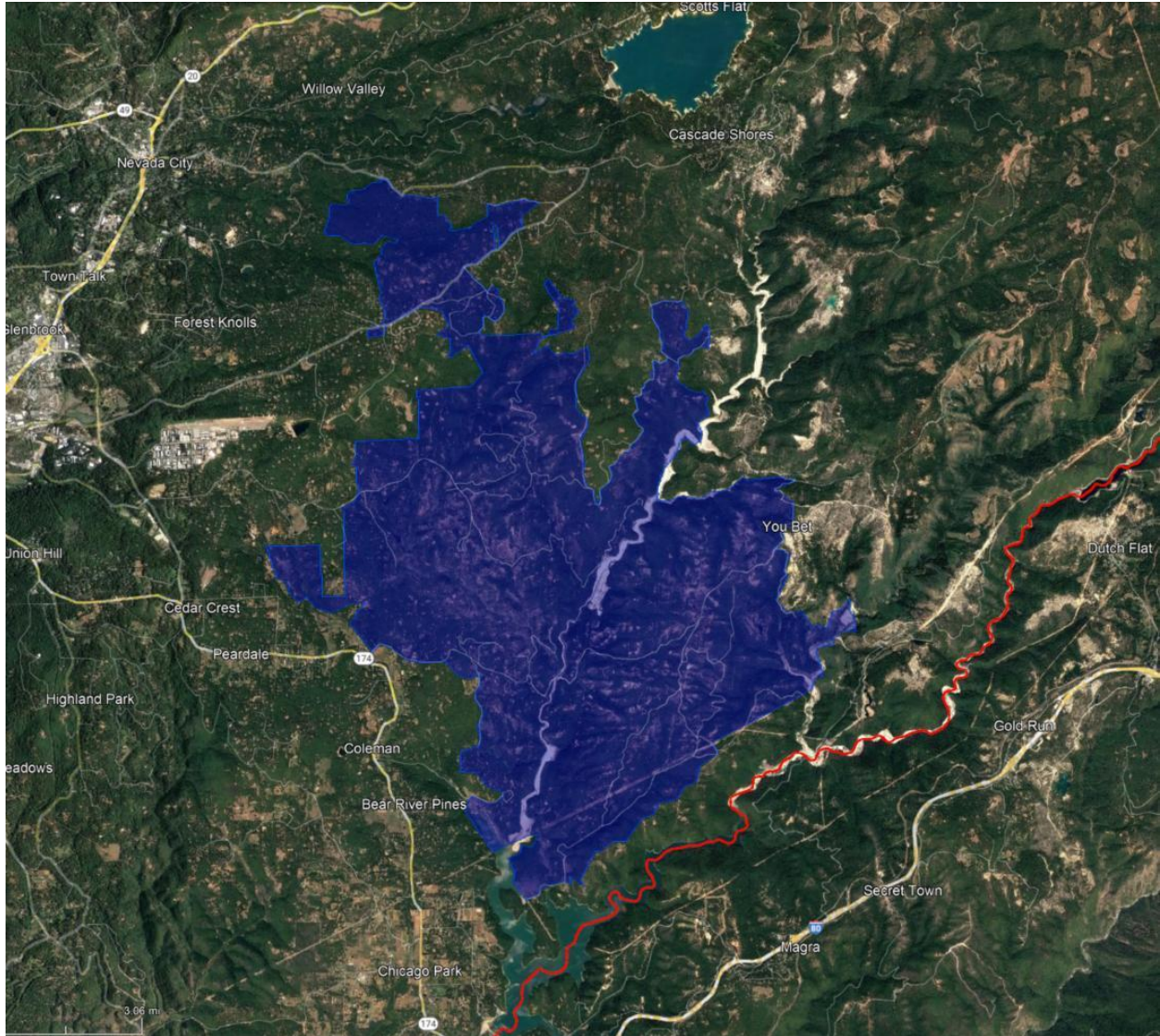
Last Mile

- *Amount of CASF grant funding requested and project cost.*

\$3,284,368 is the project cost and the amount of CASF funds we're requesting for this priority unserved area.

- *Map of the proposed project area.*

Provided below

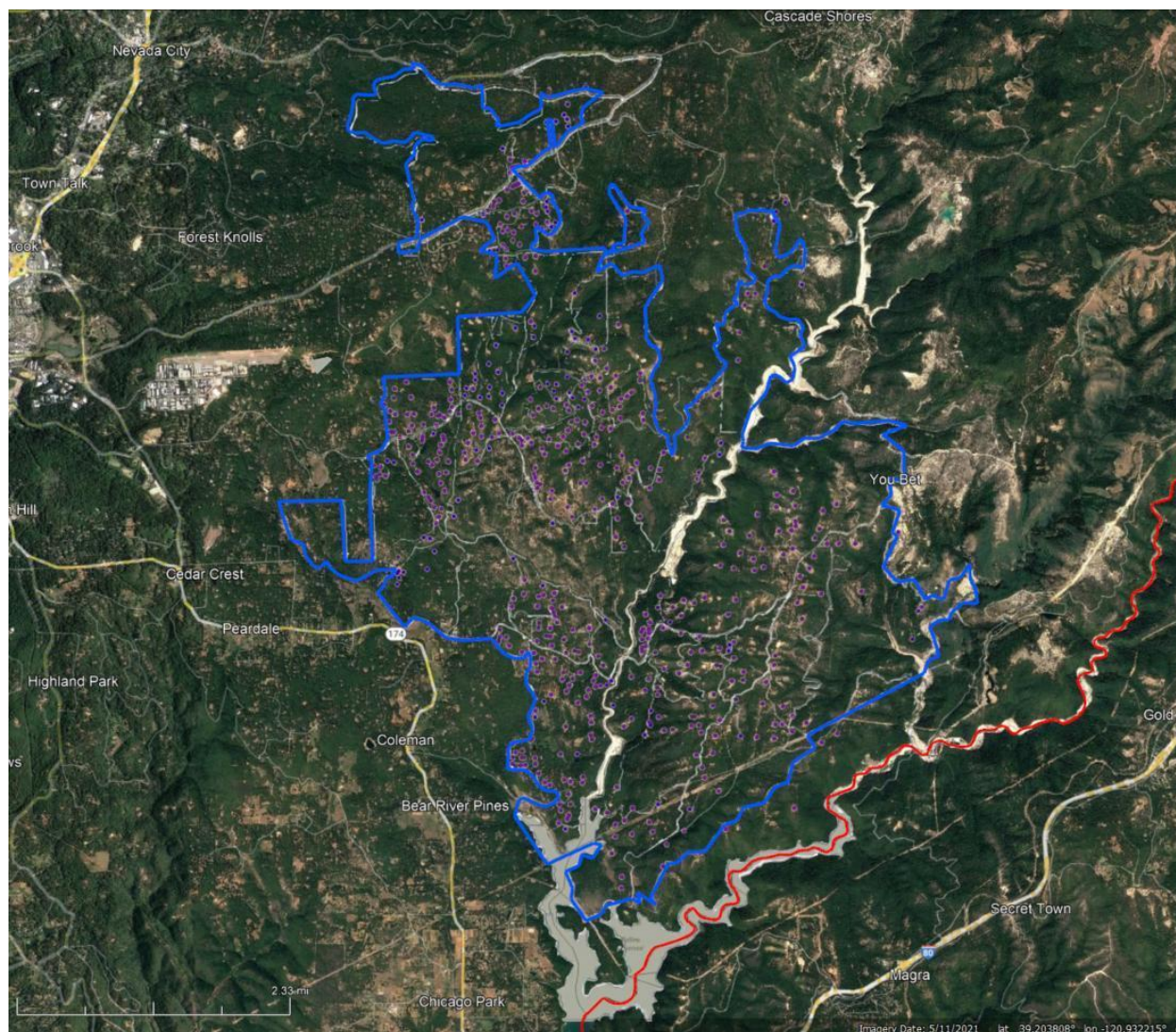


- *The number of serviceable locations the proposed project will serve.*

We estimate that the Greenhorn Creek Canyon & Banner Lava Cap Road Broadband Project will be technically capable of serving approximately 95% of the 1975 households and businesses in the grant area due to Tarana and new Cambium technology which have the ability to penetrate obstacles unlike most other fixed wireless technology which are limited to Line-Of-Sight (LOS) coverage.

- *If the project is requesting funding in an area with no internet connectivity, it must state the number of serviceable locations with no-internet connectivity and the number of other CASF-eligible serviceable locations.*

As indicated by the map image below, there are well over a hundred unserved and priority unserved households. (unserved and priority unserved color shifted for better contrast with Google Earth background)



- *The maximum mbps download and upload speed currently offered to serviceable locations in the project area.*

Generally this area is served by traditional satellite and older fixed wireless. Speeds range from 5 to 25Mb/sec with the faster speeds generally coming from geosynchronous satellites, which has the latency problems associated with that technology. The area is heavily under and unserved according to the California Broadband map as well as the speed test data from the Nevada county survey. As indicated by the map image, there are many unserved and priority unserved households. (unserved and priority unserved color shifted for better contrast against the Google Earth background)

- *Median Household Income of the project area.*

The project area encompasses nearly a hundred census blocks and part or all of five census block groups. According to the CA broadband map, the aggregate median household income of the five census block groups contained fully or partially within the grant area is \$90,570.

- *The number of businesses, anchor institutions and public safety locations in the project area that will receive new or improved service.*

There is very little development in the area other than single family homes in unincorporated areas. Google shows eleven businesses registered in the polygon. There are undoubtedly more small home based businesses that are not registered with traditional commercial services. The following anchor institutions appear on the CA broadband map

13933 Banner Mountain Lookout Rd, Nevada City, CA 95959

- *A description of the major infrastructure to be deployed: miles of planned fiber, Central Offices used, number of remote terminals/fiber huts/wireless towers to be built, and if an IRU is used.*

There are two specific products that have dramatically changed the wireless landscape in the last year. Tarana Wireless has come up with technology that reassembles radio waves that have been dispersed during transmission by obstacles or other radio sources, It does this using proprietary software plus an onboard supercomputer. This has resulted in the effective elimination of the effects of radio interference allowing customers to get speeds of 500 Megabits per second on the current generation of equipment and up to one gigabit on the already-in-production next generation. This technology works in existing frequency bands and eliminates the biggest challenge in congested areas - radio interference. The second incredible development has been the release of the 6 GHz frequency band by the FCC for the exclusive use of ISPs and telecommunications companies. The allocation of frequency is so large that from the very beginning end users will get 1 Gigabit per second to their home, which we are currently delivering on a test network with FCC permission. The FCC expects to release the equipment (two vendors make equipment currently for this band) from test mode to general use by the end of this year in time for use in grants. These two developments will dramatically shift our ability to provide cable-like speeds with cable-equivalent consistency to customers in the most remote locations in our region. This is the most exciting time to be a wireless Internet service provider in the last 20 years and the ability to exceed existing wireline speeds and reliability is nothing short of revolutionary. With the “to-the-home” capacities available today and the pace of technological development, we expect subsequent generations of this equipment to far outpace the demands of consumers for the foreseeable future — arguably several decades into the future. Wireless technology is now in a position to be considered a worthy alternative to fiber-based deployment on a speed and performance basis and superior to fiber from a cost/performance perspective. Beyond the low costs of wireless deployments and the future upgradability, wireless is superior when measuring the speed of deployment as well as the ease of repair and replacement after natural disasters, which given the frequent occurrence of violent

- *Description of proposed broadband project plan for which CASF funding is being requested, including the type of technology to be provided in the proposed service areas:*

We are intending to build a Fixed Wireless network that can service each home from multiple directions. We will use partially overlapping sectors providing most homes with multiple Access Point choices for a high connection success probability. This network will be fed by a fiber backhaul line into a main site.

- *Download speed capabilities of proposed facilities.*

500 Mbps upon deployment with 1 Gb/sec available shortly after with firmware/technology upgrades

- *Upload speed capabilities of proposed facilities.*

500 Mbps upon deployment with 1 Gb/sec available shortly after with firmware/technology upgrades.

- *The project description will provide enough construction detail to enable a preliminary indication of the need for a California Environmental Quality Act (CEQA) review and if proposed project areas contains any environmentally sensitive areas. For example, when trenching is required, the applicant will state and describe the manner in which the site is to be restored, post-trenching.*

There will be no trenching or any other construction significant enough to trigger any CEQA accommodation. The most substantial construction that will be undertaken is erecting five or six monopole towers that will not be taller than 100' and will be located on private property in extremely rural areas which are out of view of Public Areas. Last year a tower was proposed north of Truckee to service remote communities there and that tower was exempted from CEQA review because it wasn't higher than 100' and it was in an extremely rural area so consequently not visible from Public Areas. The towers for this project will be in a highly similar situation as the proposed Truckee tower that was exempt from CEQA. We don't see any reason these towers would trigger CEQA if the north Truckee tower didn't.

- *Identification of the leveraging of existing available facilities (e.g., interconnection in lieu of overbuilding existing facilities of another provider).*

We will pull AT&T or VAST fiber to the most advantageous location eliminating the need for middle mile fiber.

- *A statement of whether the applicant is disputing the Broadband Map depiction of served status.*

We are not disputing the CA broadband map.

- *A statement of whether the applicant is seeking Ministerial Review and, if so, information that the application meets all requirements for Ministerial Review.*

We are seeking Ministerial Review for the following reasons which are explained in greater detail in the main grant writeup.

- We will offer an ACP enabled low income plan for \$15/month.
- Our grant request is less than \$25,000,000
- We believe that our project qualifies as CEQA-exempt.
- Our cost per passing is less than \$4500.

- *An explanation of why any middle mile facilities in the proposed project are necessary for accessing the proposed last-mile infrastructure.*

This project does not propose any middle mile infrastructure.

- *A statement accepting the open access requirements for any middle mile facilities in the proposed project. Projects will interconnect with the statewide open-access middle mile network, where reasonable and feasible;¹⁸ if interconnection to the statewide middle mile network is not feasible or reasonable, a verifiable statement explaining why interconnection is not feasible or reasonable is also required.*

This project does not propose any middle mile infrastructure.