

CASF Application – Leavitt

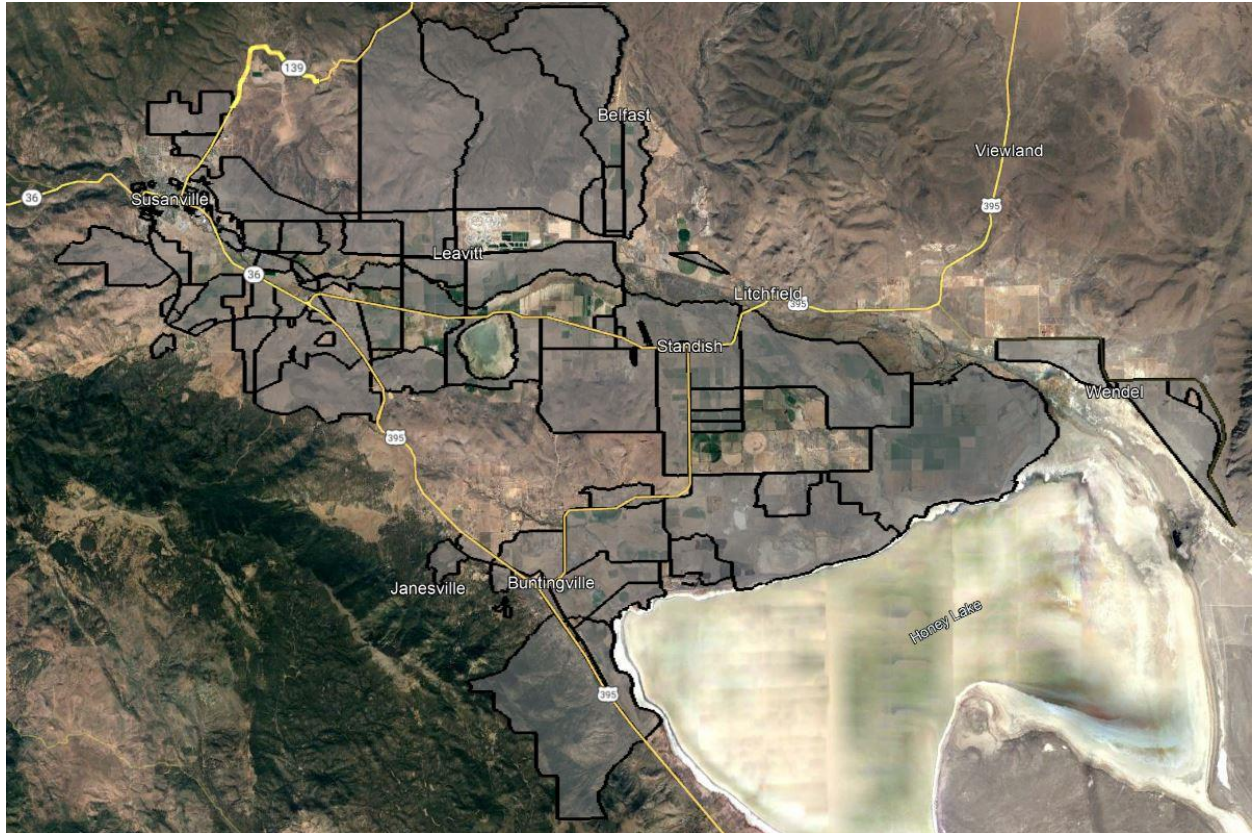
Project Summary

Applicant:	Digital Path, Inc. d/b/a DigitalPath, Inc. #1151
Contact:	Andrew Cardin Senior Vice President of Operations acardin@digitalpath.com
Project Title:	Leavitt
Location:	Susanville, Standish, Leavitt, Wendel, Buntingville, Janesville – Lassen County
Type:	hybrid last-mile/middle mile
Grant Funds Requested:	\$1,175,121

Project Area Map



California Interactive Broadband Map – Leavitt, Lassen County



Census Block Boundaries

The Leavitt CASF Project will provide service to 452 Priority Eligible locations and 266 Eligible locations. 718 total locations.

Census Blocks:

60350406001034	60350403023040	60350403041021	60350404001084
60350403021000	60350403031031	60350403052006	60350404001071
60350403023041	60350403041013	60350403023022	60350403033040
60350405001025	60350403041008	60350403042014	60350404001076
60350403021004	60350403021030	60350405002025	60350404001043
60350403021019	60350403031047	60350403042008	60350405001018
60350404002008	60350403051017	60350405002026	60350403023071
60350406001003	60350403022005	60350403022001	60350404001005
60350403031016	60350403033002	60350403051039	60350403031033
60350403021020	60350405002034	60350403041036	60350403031015
60350404001078	60350403053010	60350403023038	60350404001034
60350406001033	60350403033004	60350405002035	60350404001041
60350404001053	60350403021005	60350403042001	60350404001077
60350403023076	60350403021031	60350403042004	60350406001056
60350403042039	60350403022003	60350405001015	60350405001020
60350405001027	60350404001091	60350403041032	60350404001055
60350404001086	60350403031017	60350404001036	60350404001073
60350403023070	60350403023032	60350403051038	60350404001054
60350403021048	60350405002028	60350405001022	60350404001051
60350404001040	60350403023042	60350403032000	60350404001048
60350404001085	60350405001023	60350403023019	60350403021034
60350405002032	60350403032020	60350403031009	60350403033013
60350405001017	60350403021032	60350403031045	60350404001039
60350403031008	60350403021037	60350403031046	60350404001038
60350405002030	60350403023035	60350403033024	60350403031036
60350403021021	60350404001074	60350403032004	60350403031051
60350405001024	60350403021049	60350405001011	60350405001014
60350403022014	60350403023013	60350405001012	

Zip Codes:

96113, 96114, 96117, 96121, 96128, 96130, 96136

According to the data available through the California Interactive Broadband Map:

210 locations have access equal to or less than 10 Mbps Down / 1 Mbps Up and 508 locations have access at less than 25 Mbps Down / 3 Mbps Up. This project will make speeds available of 100 Mbps downstream and 20 Mbps upstream.

The median household income of the project area is \$69,498.

There are 19 Community Anchor Institutions identified within the project area. None of these locations are listed as eligible or priority eligible.

There is no major infrastructure proposed in this Project.

The major equipment associated with this project is:

- High-capacity access points, generators, licensed microwave links and 1 replacement tower.

Construction will take less than 18 months to complete.

The Leavitt Project is a hybrid last-mile/middle mile fixed wireless deployment utilizing 3 existing towers to deliver service to the households covered by this project, including upgrading 1 existing tower.

Once completed, locations covered in this Project will have access to download speeds of 100 Mbps and upload speeds of 20 Mbps. Additional service tiers will be available.

Digital Path, Inc. believes this project to be categorically exempt from CEQA requirements based on the use of existing facilities and local building requirements.

Digital Path, Inc. is not disputing the California Interactive Broadband Map depiction of served status for the locations in this application.

Digital Path, Inc. is not seeking Ministerial Review.

The Middle-Mile component of this project will use licensed microwave links to interconnect the tower sites with an existing fiber connection. The Middle-Mile licensed microwave links are an indispensable part of the project due to the remoteness of the area and lack of available middle-mile connections. DigitalPath, Inc. accepts the open access requirements associated with the middle-mile component of this Project. Once the statewide open-access middle mile network becomes available, it will be connected to.