

# Plumas-Sierra Telecommunications LaPorte Broadband Project Summary

## **Applicant:**

Plumas-Sierra Telecommunications  
U-Number: U-7218-C

## **Contact Person:**

Jeff Blagg  
Right-of-Way Engineer  
73233 State Route 70  
Portola, CA 96122  
530-832-6049  
jeff.blagg@psrec.com

Or

Corby Erwin  
Consultant  
73233 State Route 70  
Portola, CA 96122  
530-832-6034  
corby.erwin@psrec.com

## **Project Title:**

Plumas-Sierra Telecommunications LaPorte Broadband Project

## **Proposed Project Area Location:**

LaPorte Road and Greenhorn areas of Plumas County

## **Project Type:**

Last-mile

## **CASF Funding Requested:**

PST is requesting the full project cost of \$6,161,822 in grant funds.

## **Description of the Project:**

To leverage the current PST mid-mile fiber network for which Plumas-Sierra Telecommunications was awarded ARRA and CASF funds, PST is now applying for additional CASF funding to deploy further last-mile broadband networks to serve the LaPorte Road and Greenhorn areas of Plumas County.

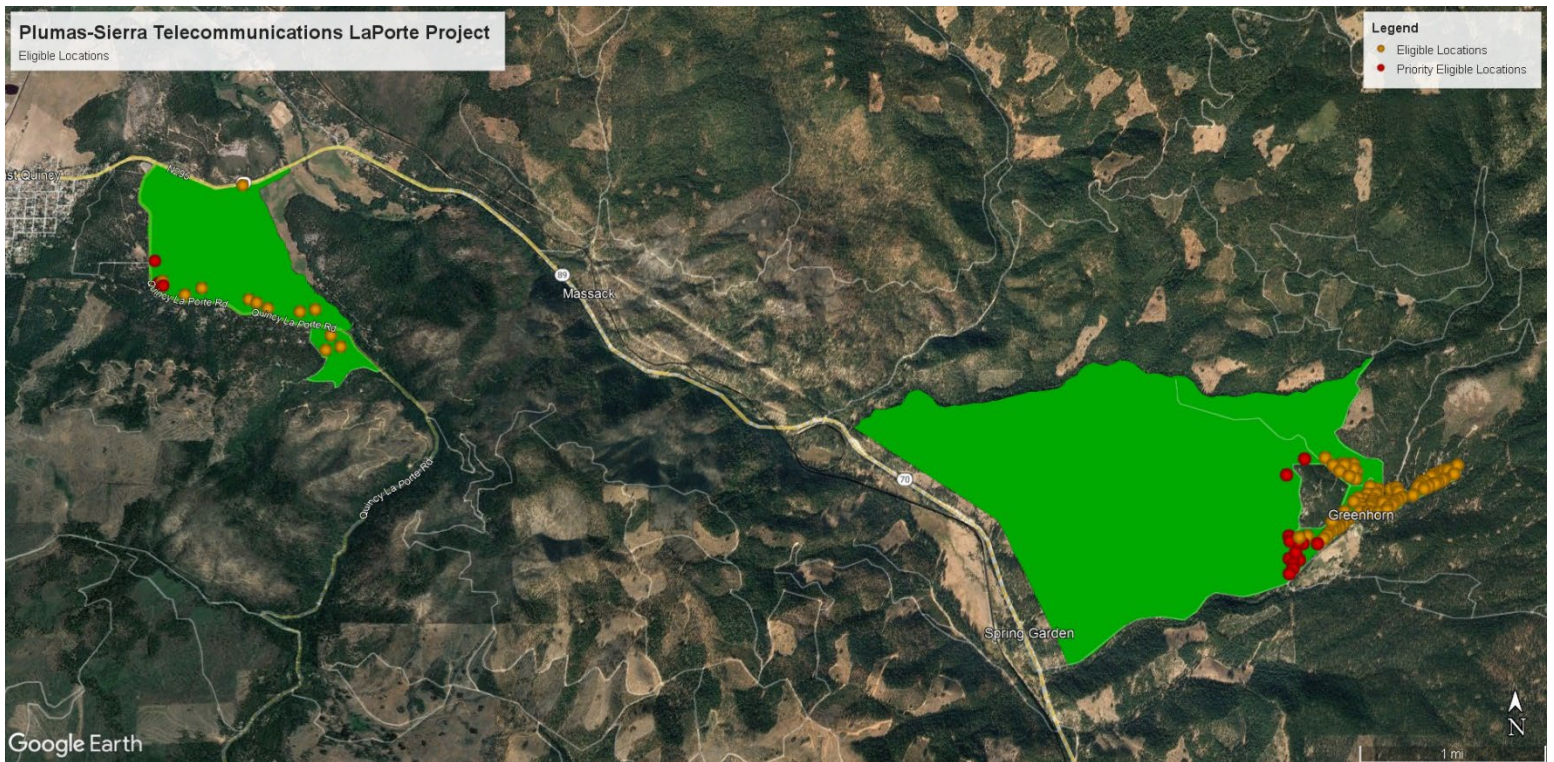
The last-mile network will use fiber optic wireline technology interconnected with PST’s mid-mile fiber network to offer service to 107 locations in these unserved area of Plumas County.

Service offerings will include minimum speeds of 100 Mbps down/ 20 Mbps up and maximum speeds of up to 1Gbps down/1Gbps up. PST’s service offerings will not have data caps.

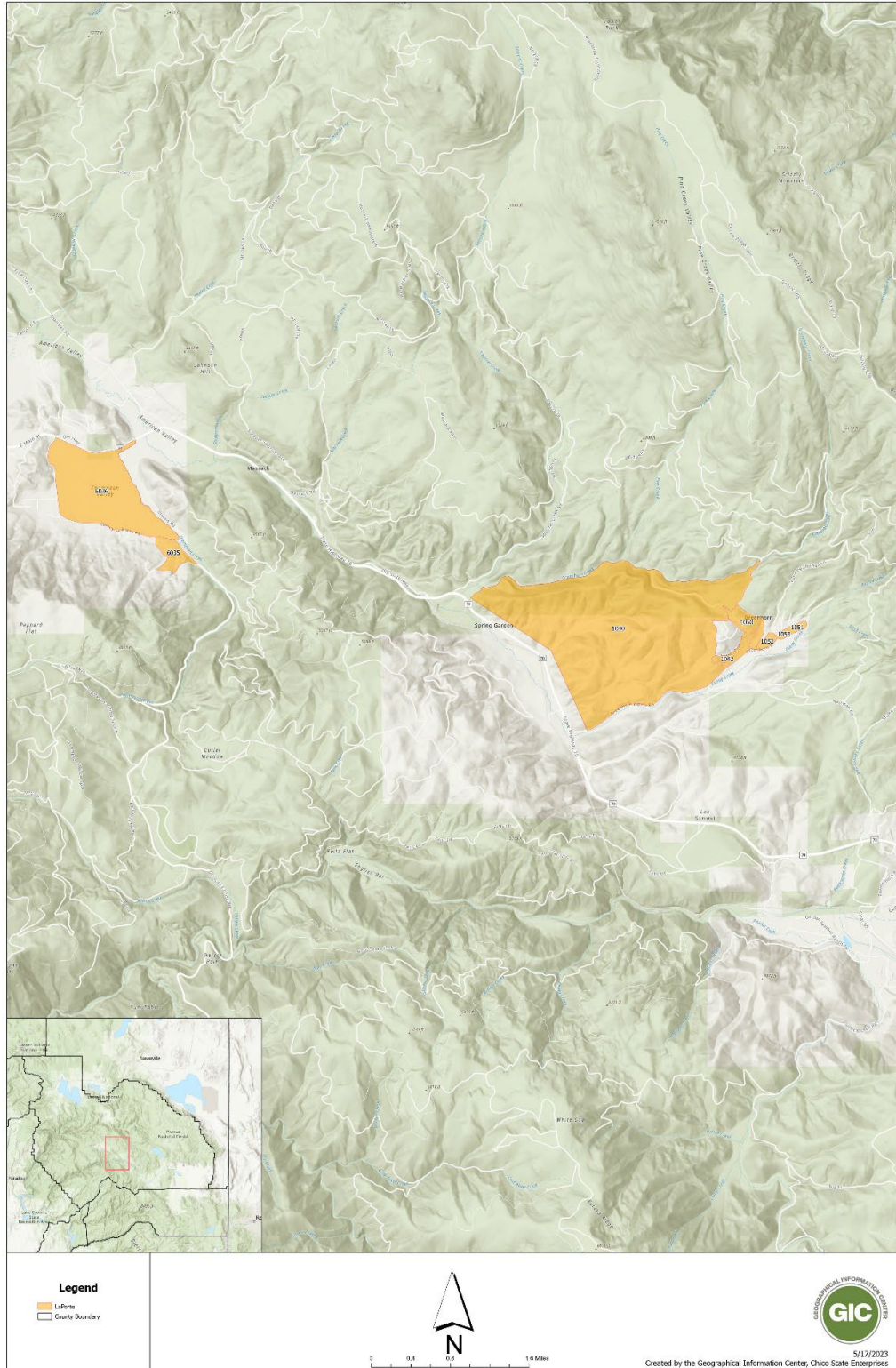
The use of fiber optics will allow PST to provide the households in this application with the most current technology, offering an improved quality of life that is not available to these residents now because of their current broadband isolation.

The COVID-19 Pandemic has highlighted the need for broadband services for working and learning from home. This project will provide much needed service in these rural areas of California.

**Maps of the proposed project areas follow:**



Plumas Sierra Telecom - CASF Plumas: LaPorte



**Serviceable Locations within project area:** 107, all of which are currently Unserved with speeds of less than 25 Mbps Down/ 3 Mbps Up. Many of these locations are in Priority Unserved areas with speeds less than 10 Mbps Down/ 1 Mbps Up.

**Census Blocks in Project Area:**

060630001006036

060630001006035

060630002021040

060630002021042

060630002021050

060630002021052

060630002021053

060630002021051

**Median Household Income:** \$60,289.50

**Anchor Institutions, Public Safety Locations and Businesses:**

The project area does not include any anchor institutions, public safety locations or businesses.

**Major Infrastructure and Equipment to be Deployed:**

- 27.4 Miles of Fiber Optic Cable
- 85 Optical Line Terminals
- 45 Handholes
- 107 Optical Network Terminals
- 2 Above-ground Cabinet
- 2 XGS-PON8 card
- 16 XGS-PON SFPs

**Aerial and Underground Installation:**

- 10.2 Miles of underground infrastructure
- 17.2 Miles of overhead infrastructure

**Cost of Major Infrastructure and Equipment to be Deployed:** \$649,072

**Estimated Construction Timeline:** 18 months

**Proposed Broadband Project Plan:**

The PST LaPorte Broadband Project plans to use fiber optic cable to provide download speeds of up to 1 Gbps and upload speeds of up to 1 Gbps with no data caps.

PST is leveraging its current mid-mile fiber network for which it was awarded ARRA and CASF funds, and existing infrastructure of its parent company, Plumas-Sierra Rural Electric Cooperative to deploy this additional last-mile broadband network to serve the LaPorte Road and Greenhorn areas of Plumas County.

Plumas-Sierra Telecommunications believes that this last-mile broadband project is categorically exempt from CEQA requirements because PST is using existing public utility easements considered previously disturbed. PST believes this project is exempt under CEQA Article 19, Sections 15301 b and 15303 d.

PST is not disputing the Broadband Map depiction of served status.

PST is not seeking Ministerial Review of this project.

The PST LaPorte Broadband Project proposes construction of only new last-mile broadband infrastructure. No funding is being requested for mid-mile infrastructure.