

Plumas-Sierra Telecommunications Calpine Project Summary

Applicant:

Plumas-Sierra Telecommunications

U-Number: U-7218-C

Contact Person:

Jeff Blagg

Right-of-Way Engineer

73233 State Route 70

Portola, CA 96122

530-832-6049

jeff.blagg@psrec.com

Or

Corby Erwin

Consultant

73233 State Route 70

Portola, CA 96122

530-832-6034

corby.erwin@psrec.com

Project Title:

PST Calpine Broadband Project

Proposed Project Area Location:

Calpine area of Sierra County

Project Type:

Last-mile

CASF Funding Requested:

PST is requesting the full project cost of \$3,430,996 in grant funds.

Description of the Project:

To leverage the current PST mid-mile fiber network for which Plumas-Sierra Telecommunications was awarded ARRA and CASF funds, PST is now applying for additional CASF funding to deploy further last-mile broadband networks to serve the Calpine area of Sierra County.

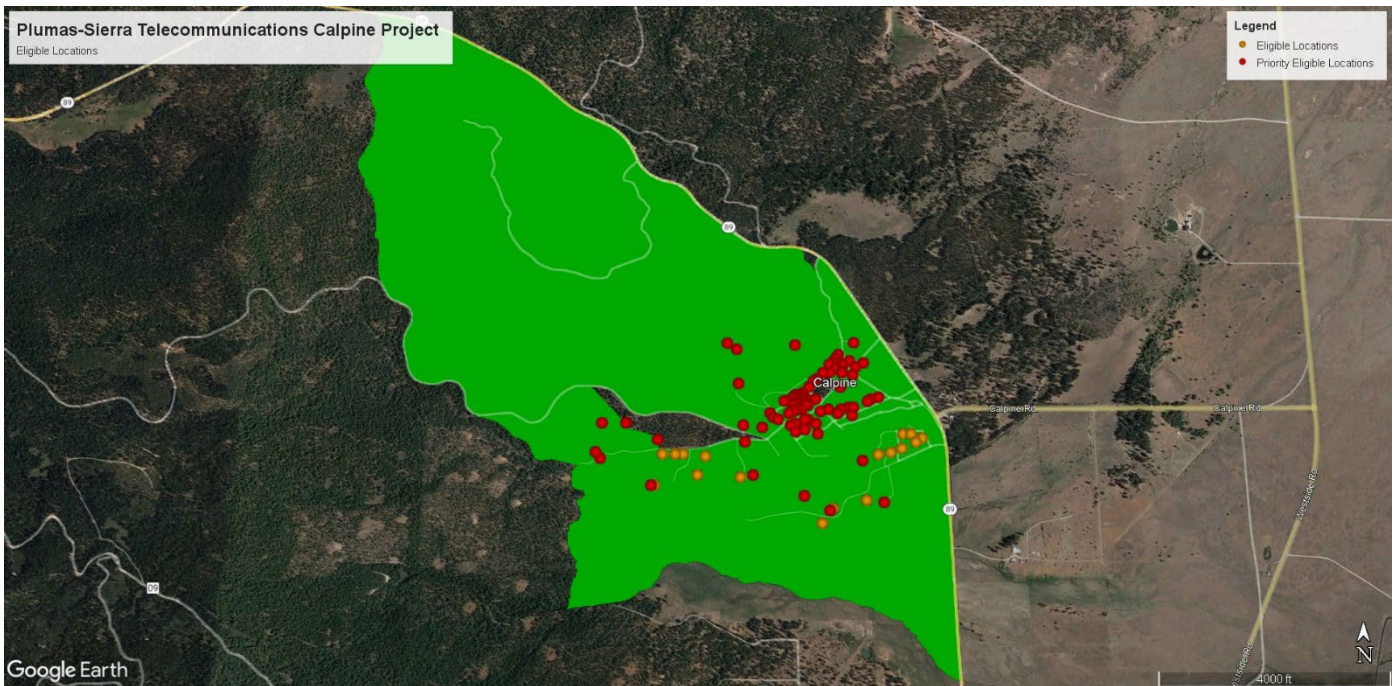
The last-mile network will use fiber optic wireline technology interconnected with PST’s mid-mile fiber network to offer service to 96 locations in this unserved area of Sierra County.

Service offerings will include minimum speeds of 100 Mbps down/ 20 Mbps up and maximum speeds of up to 1Gbps down/1Gbps up. PST’s service offerings will not have data caps.

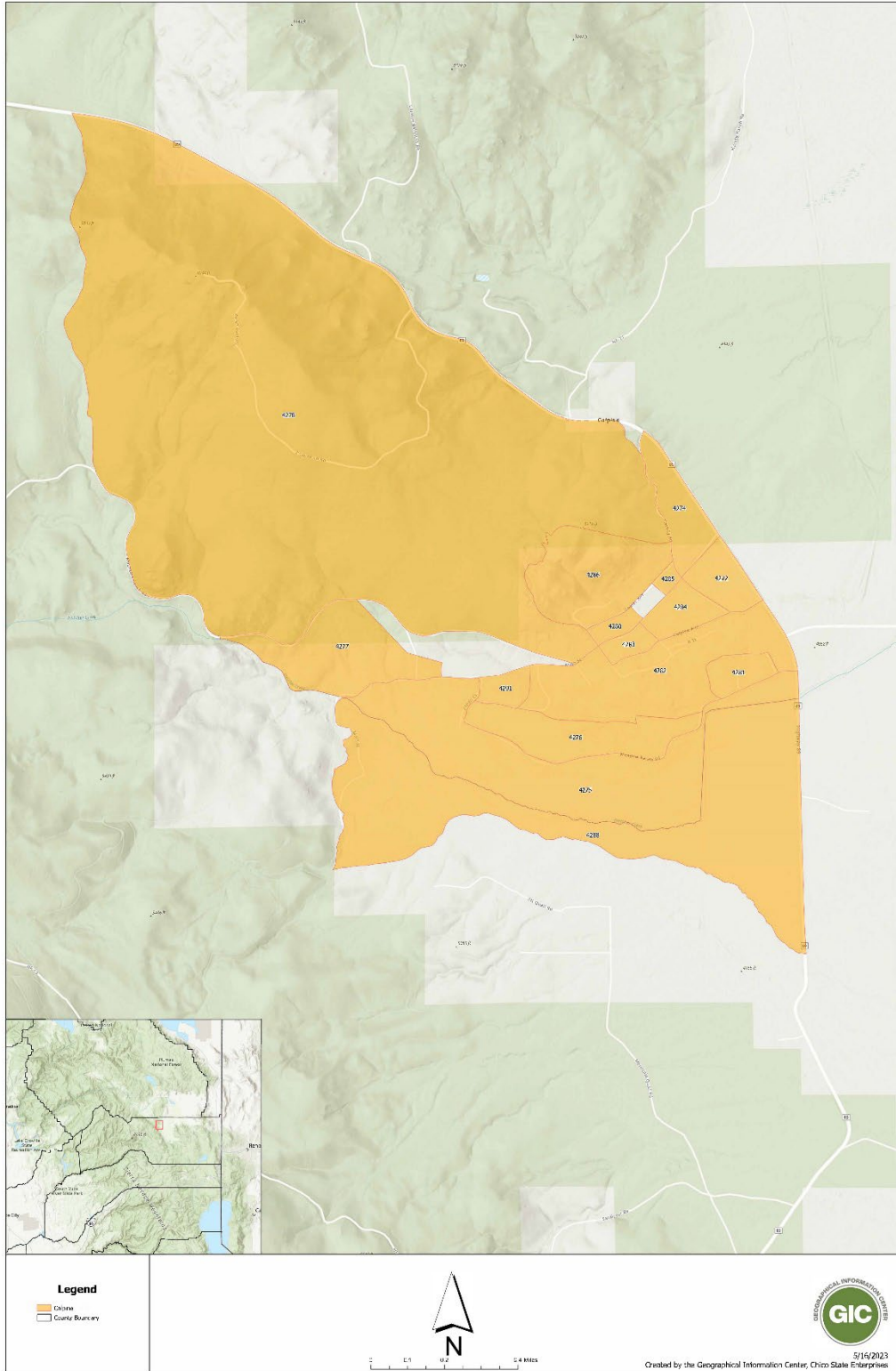
The use of fiber optics will allow PST to provide the households in this application with the most current technology, offering an improved quality of life that is not available to these residents now because of their current broadband isolation.

The COVID-19 Pandemic has highlighted the need for broadband services for working and learning from home. This project will provide much needed service in these rural areas of California.

Maps of the proposed project area follow:



Plumas Sierra Telecom - CASF Sierra: Calpine



Serviceable Locations within project area: 96, all of which are currently Unserved with speeds of less than 25 Mbps Down/ 3 Mbps Up. The majority of these locations are in Priority Unserved areas with speeds less than 10 Mbps Down/ 1 Mbps Up.

Census Blocks in Project Area:

060910100004283

060910100004280

060910100004284

060910100004285

060910100004274

060910100004272

060910100004286

060910100004278

060910100004275

060910100004277

060910100004276

060910100004282

060910100004281

060910100004291

060910100004288

Median Household Income: \$71,429

Anchor Institutions, Public Safety Locations and Businesses:

The project area does not include any anchor institutions, public safety locations or businesses.

Major Infrastructure and Equipment to be Deployed:

- 13.1 Miles of Fiber Optic Cable
- 25 Optical Line Terminals
- 90 Handholes
- 96 Optical Network Terminals
- 1 Above-ground Cabinet

- 1 XGS-PON8 card
- 8 XGS-PON SFPs

Aerial and Underground Installation:

- 7.8 Miles of underground infrastructure
- 5.3 Miles of overhead infrastructure

Cost of Major Infrastructure and Equipment to be Deployed: \$386,246

Estimated Construction Timeline: 24 months after environmental review and permit approvals.

Proposed Broadband Project Plan:

The PST Calpine Broadband Project plans to use fiber optic cable to provide download speeds of up to 1 Gbps and upload speeds of up to 1 Gbps with no data caps.

PST is leveraging its current mid-mile fiber network for which it was awarded ARRA and CASF funds, and existing infrastructure of its parent company, Plumas-Sierra Rural Electric Cooperative to deploy this additional last-mile broadband network to serve the Calpine area of Sierra County.

Plumas-Sierra Telecommunications believes that this last-mile broadband project will require CEQA and NEPA review with USDA/USFS.

PST is not disputing the Broadband Map depiction of served status.

PST is not seeking Ministerial Review of this project.

The PST Calpine Broadband Project proposes construction of only new last-mile broadband infrastructure. No funding is being requested for mid-mile infrastructure.