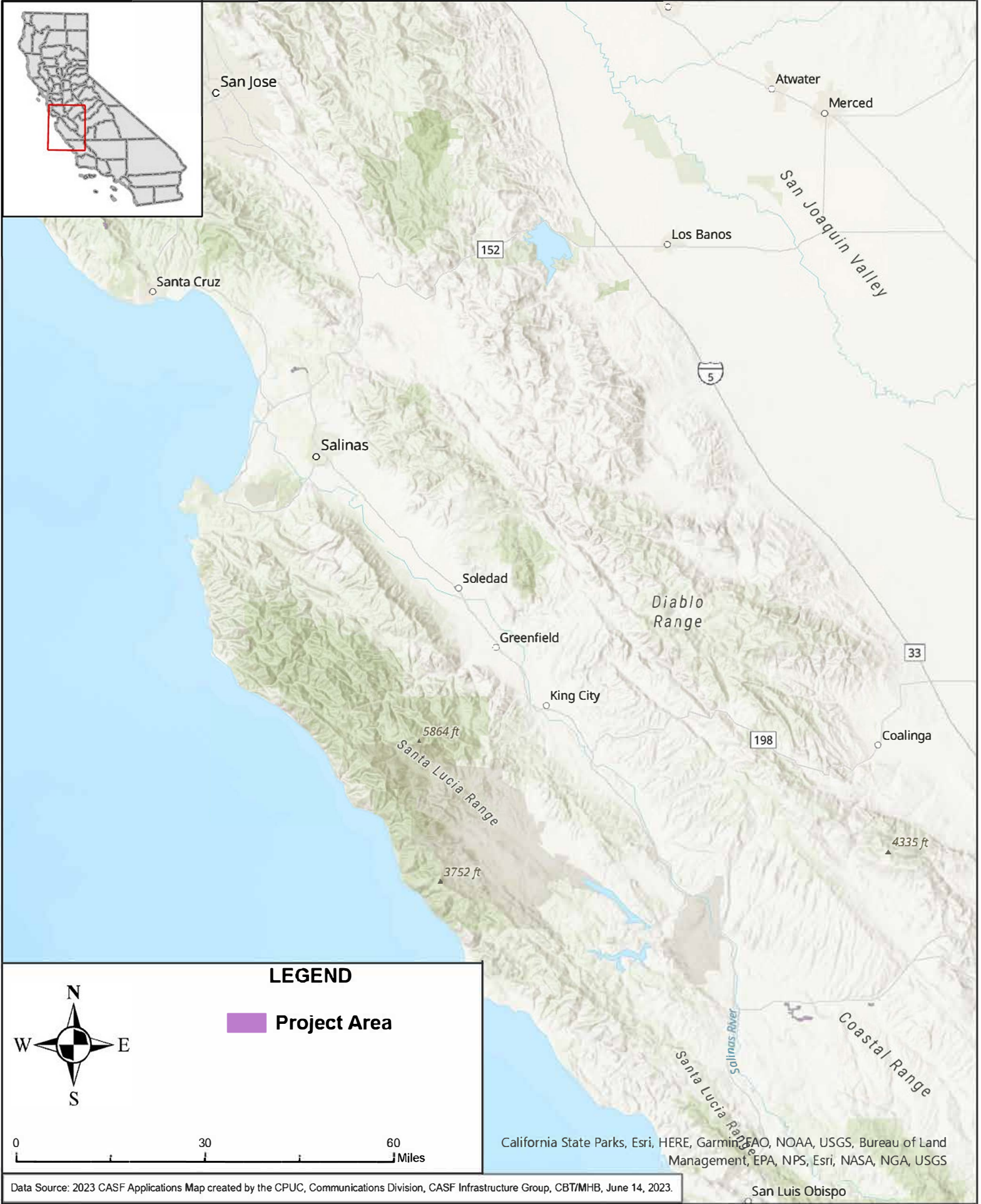




STATE OF CALIFORNIA

Surfnet Communications - Proposed Infrastructure Grant Application

Three County Fiber, Map 1 of 8 - March 18, 2024

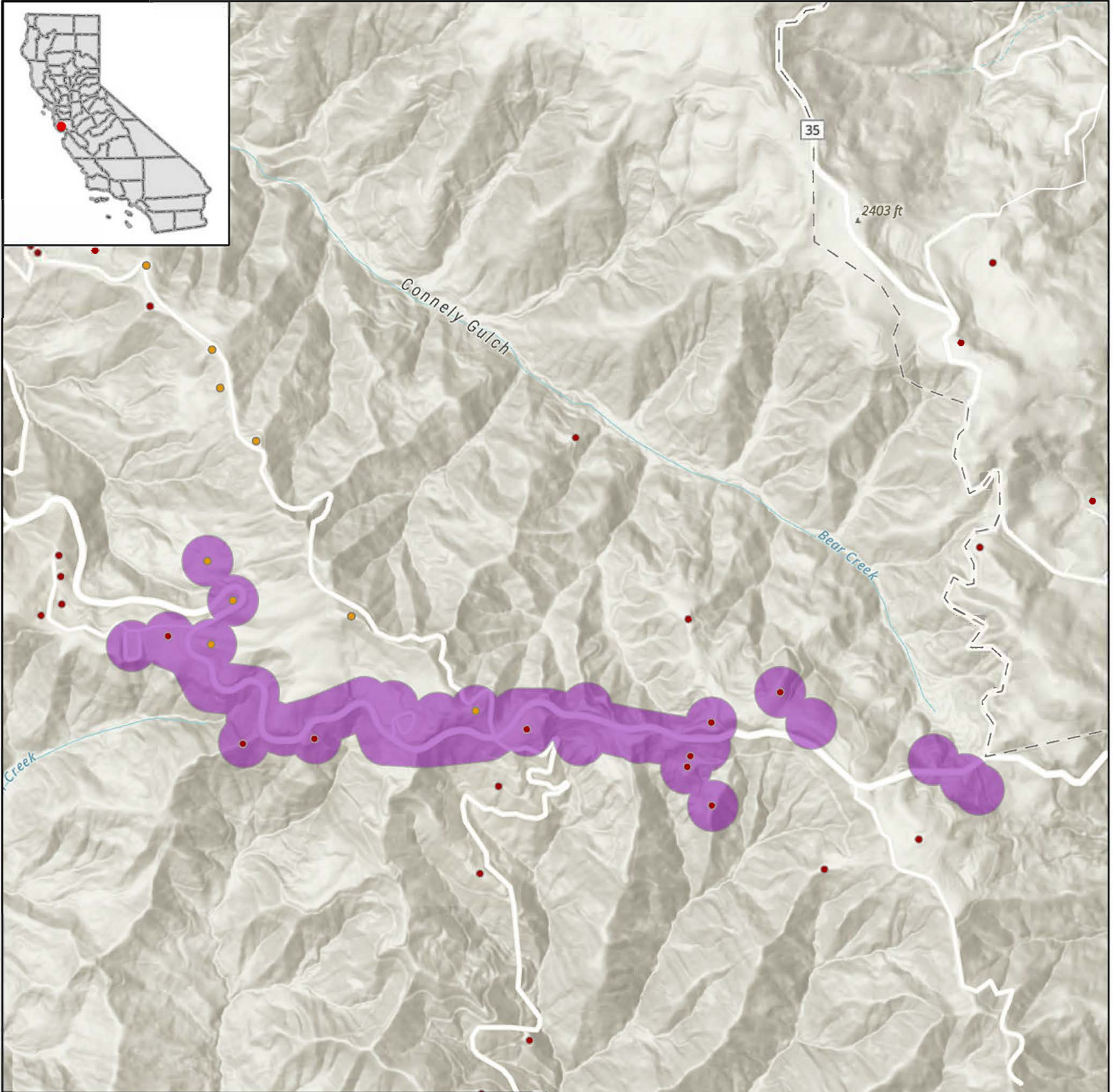




STATE OF CALIFORNIA

Surfnet Communications - Proposed Infrastructure Grant Application

Three County Fiber, Bear Creek, Map 2 of 8 - March 18, 2024



LEGEND

CASF Eligible Locations

- Eligible
- Priority Eligible
- Project Area

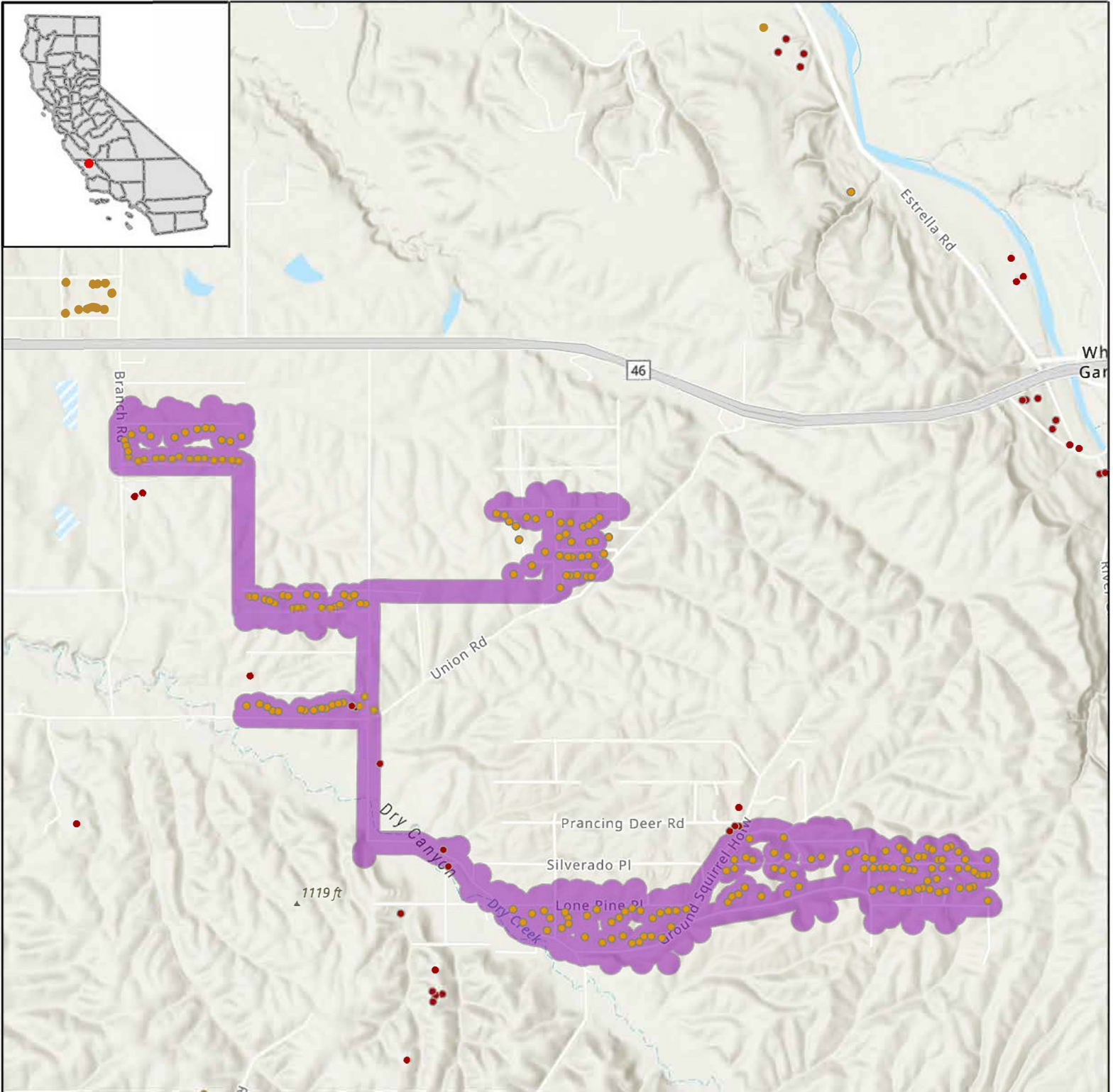
Esri, NASA, NGA, USGS, FEMA, County of Santa Clara, California State Parks, Esri, HERE, Garmin, SafeGraph, GeoTechnologies, Inc., METI/NASA, USGS, Bureau of Land Management, EPA, NPS, US Census Bureau, USDA



STATE OF CALIFORNIA

Surfnet Communications - Proposed Infrastructure Grant Application

Three County Fiber, Branch, Map 3 of 8 - March 18, 2024



LEGEND

CASF Eligible Locations

- Eligible
- Priority Eligible
- Project Area

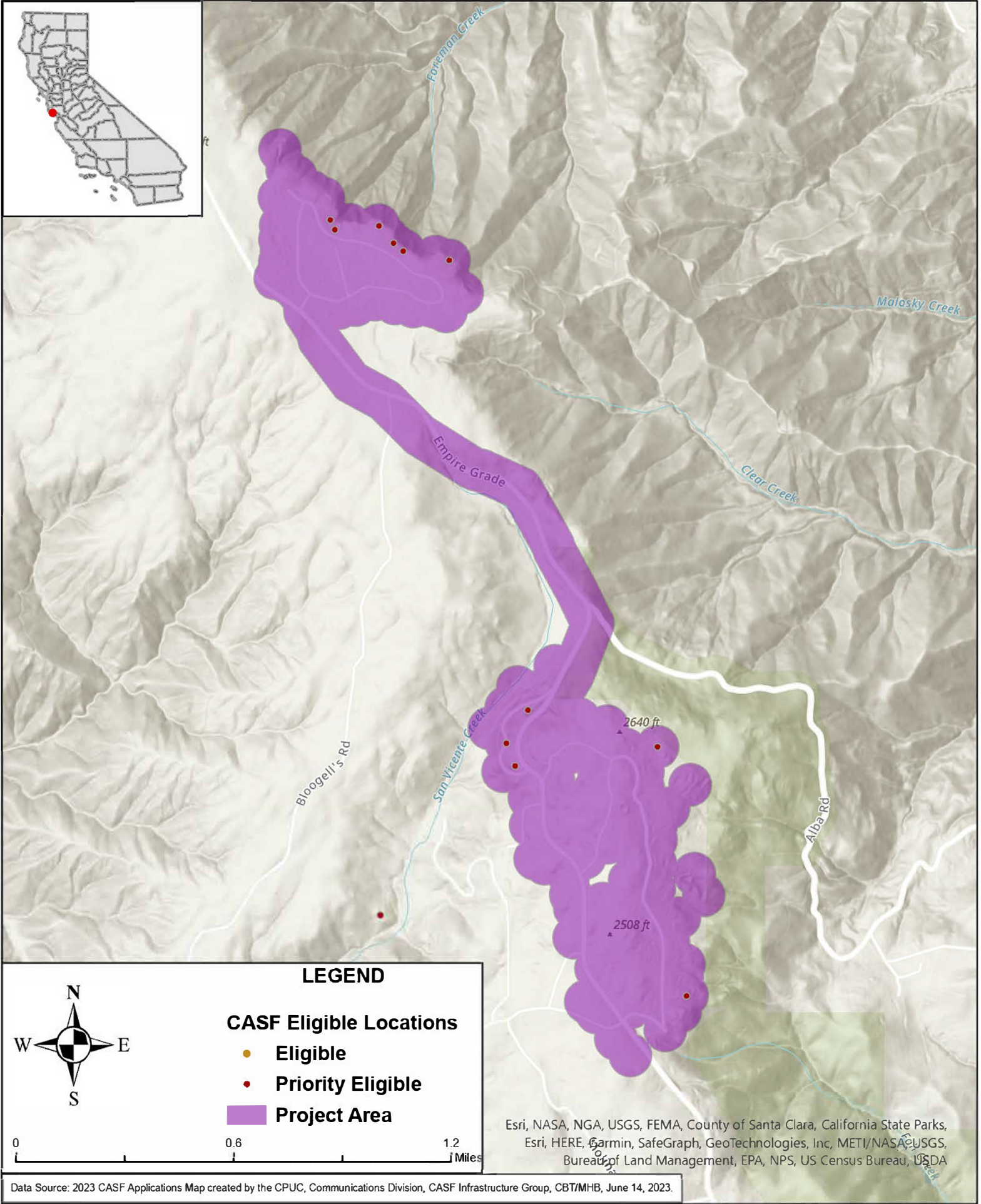
Esri, NASA, NGA, USGS, FEMA, California State Parks, Esri, HERE, Garmin, SafeGraph, GeoTechnologies, Inc, METI/NASA, USGS, Bureau of Land Management, EPA, NPS, USDA



STATE OF CALIFORNIA

Surfnet Communications - Proposed Infrastructure Grant Application

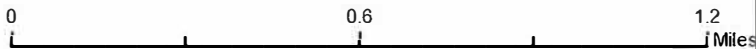
Three County Fiber, Empire Grade, Map 4 of 8 - March 18, 2024



LEGEND

CASF Eligible Locations

- Eligible
- Priority Eligible
- Project Area



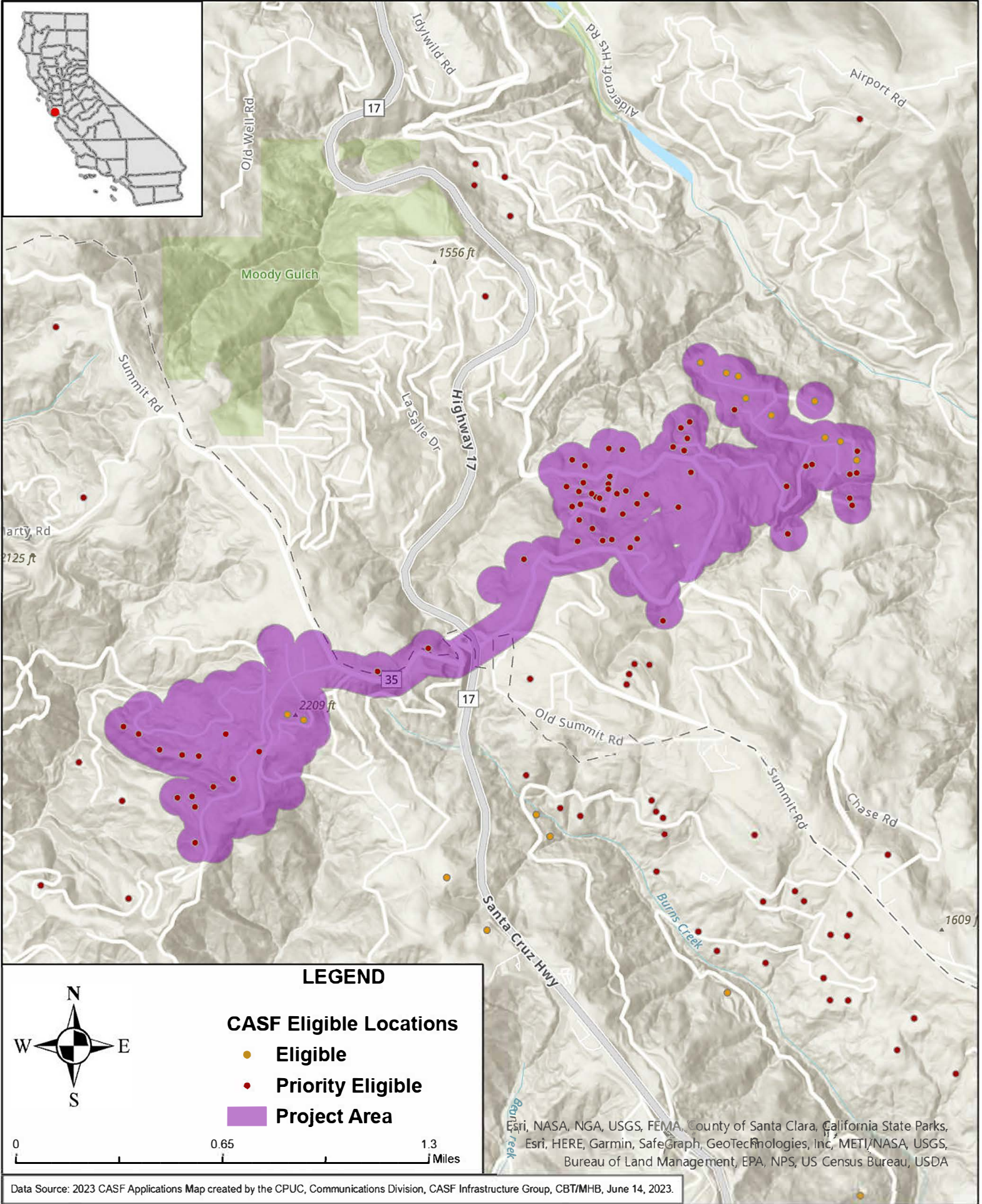
Esri, NASA, NGA, USGS, FEMA, County of Santa Clara, California State Parks, Esri, HERE, Garmin, SafeGraph, GeoTechnologies, Inc, METI/NASA, USGS, Bureau of Land Management, EPA, NPS, US Census Bureau, USDA



STATE OF CALIFORNIA

Surfnet Communications - Proposed Infrastructure Grant Application

Three County Fiber, Hutchinson, Map 5 of 8 - March 18, 2024

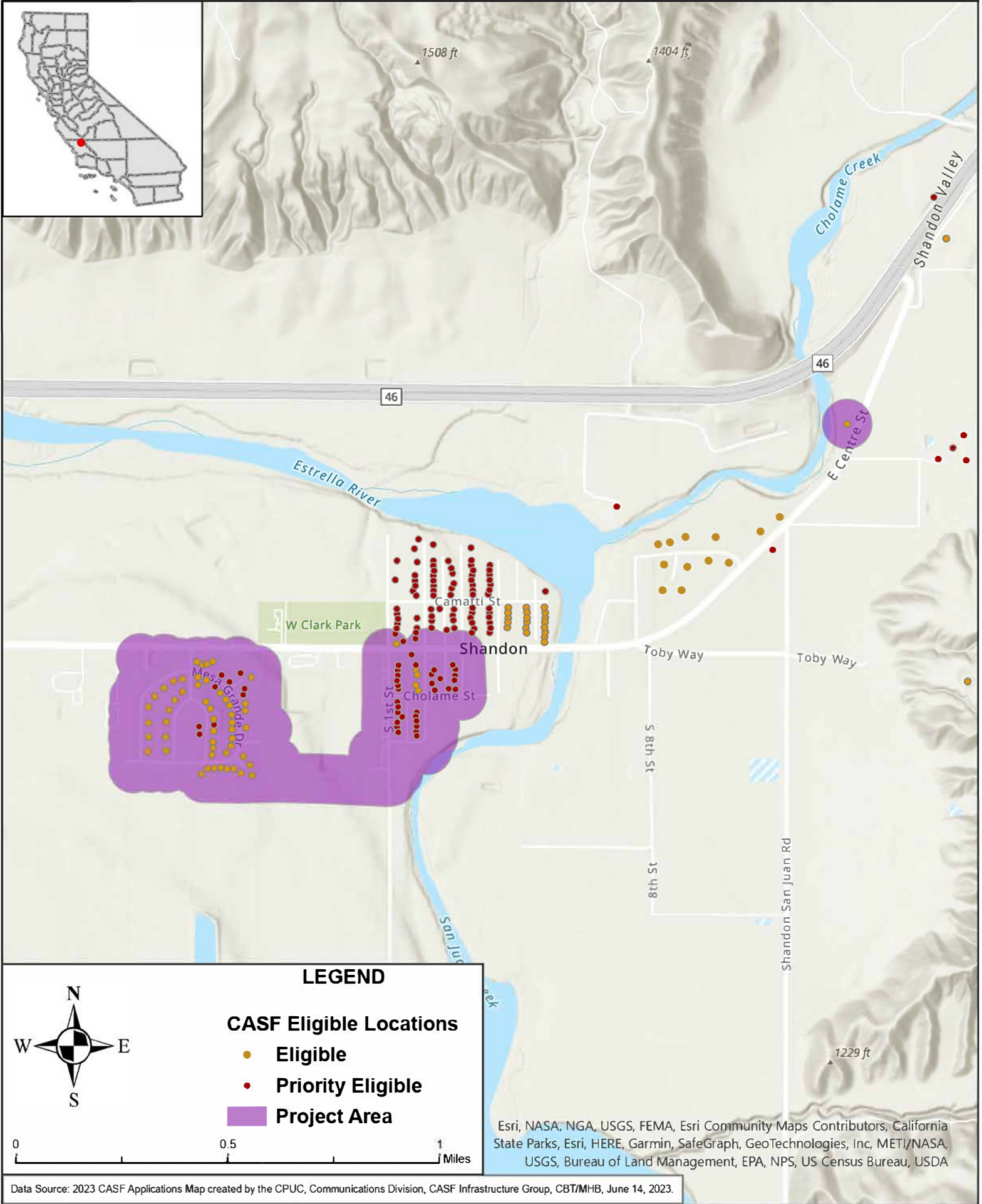




STATE OF CALIFORNIA

Surfnet Communications - Proposed Infrastructure Grant Application

Three County Fiber, Shandon, Map 6 of 8 - March 18, 2024



LEGEND

CASF Eligible Locations

- Eligible
- Priority Eligible
- Project Area



0 0.5 1 Miles

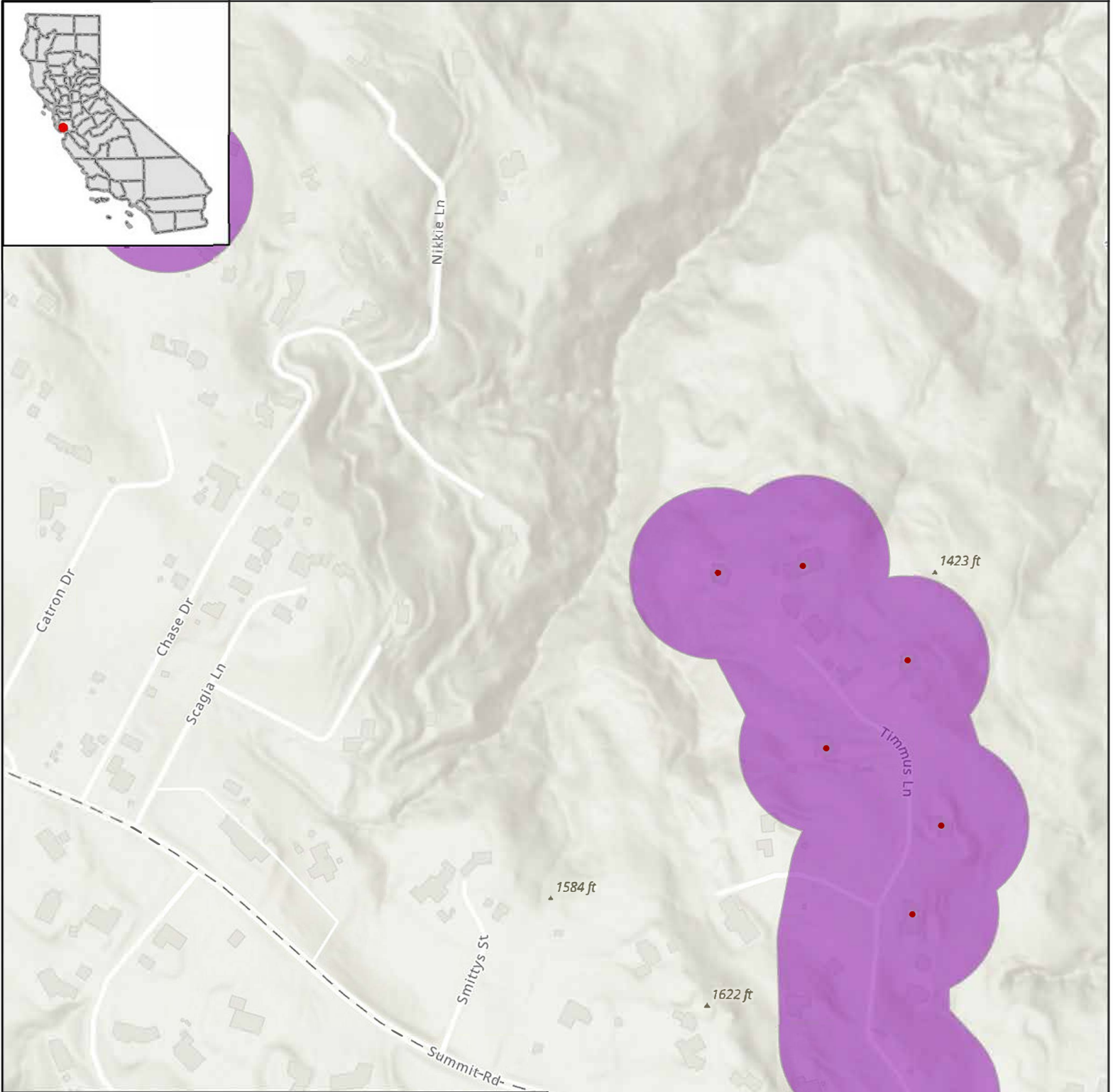
Esri, NASA, NGA, USGS, FEMA, Esri Community Maps Contributors, California State Parks, Esri, HERE, Garmin, SafeGraph, GeoTechnologies, Inc, METI/NASA, USGS, Bureau of Land Management, EPA, NPS, US Census Bureau, USDA



STATE OF CALIFORNIA

Surfnet Communications - Proposed Infrastructure Grant Application

Three County Fiber, Timmus, Map 7 of 8 - March 18, 2024



LEGEND

CASF Eligible Locations

- **Eligible**
- **Priority Eligible**
- Project Area**

0 0.15 0.3
Miles

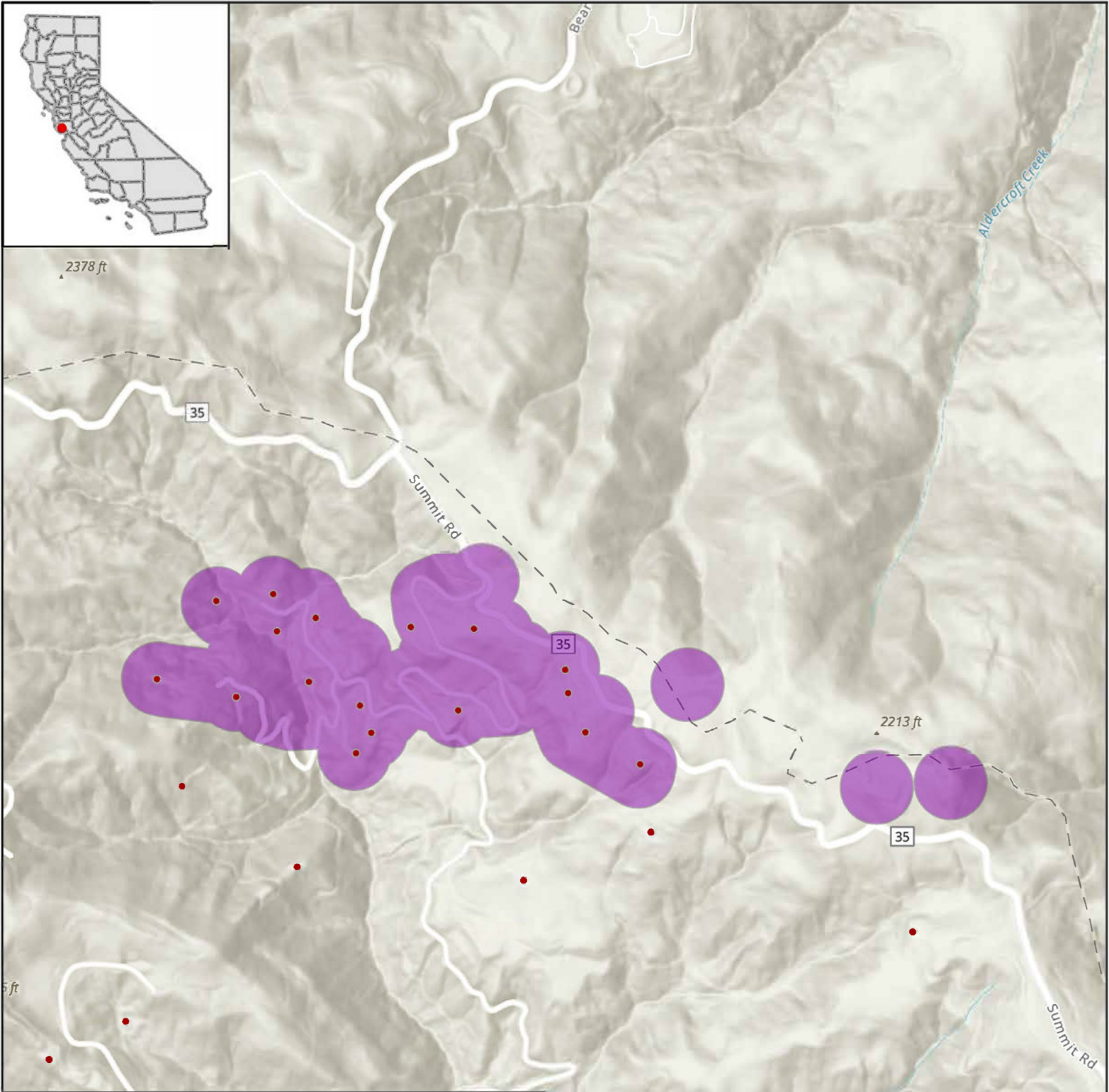
Esri Community Maps Contributors, City of San Jose, County of Santa Clara, Santa Cruz County, California State Parks, OpenStreetMap, Microsoft, Esri, HERE, Garmin, SafeGraph, GeoTechnologies, Inc, METI/NASA, USGS, Bureau of Land Management, EPA, NPS, US Census Bureau, USDA. Sources: Esri, Airbus DS, USGS, NGA, NASA, CGIAR, N Robinson, NCEAS, NLS, OS, NMA, Geodastystrelsen, Rijkswaterstaat, GSA, Geoland, FEMA, Intermap and the GIS user community



STATE OF CALIFORNIA

Surfnet Communications - Proposed Infrastructure Grant Application

Three County Fiber, Zayante, Map 8 of 8 - March 18, 2024



LEGEND

CASF Eligible Locations

- Eligible
- Priority Eligible
- Project Area

Esri Community Maps Contributors, County of Santa Clara, California State Parks, Esri, HERE, Garmin, SafeGraph, GeoTechnologies, Inc, METI/NASA, USGS, Bureau of Land Management, EPA, NPS, US Census Bureau, USDA, Esri, NASA, NGA, USGS, FEMA