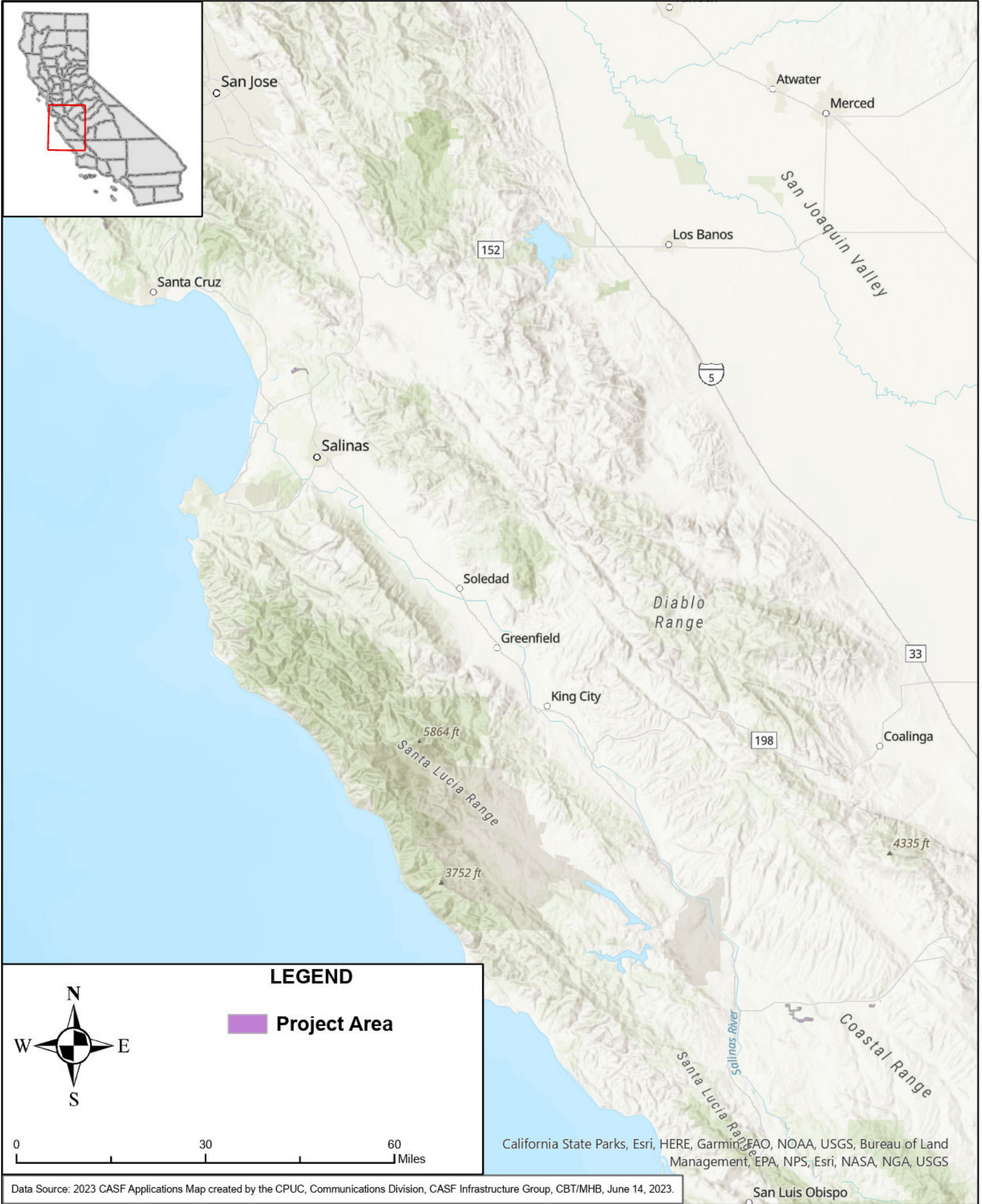




STATE OF CALIFORNIA

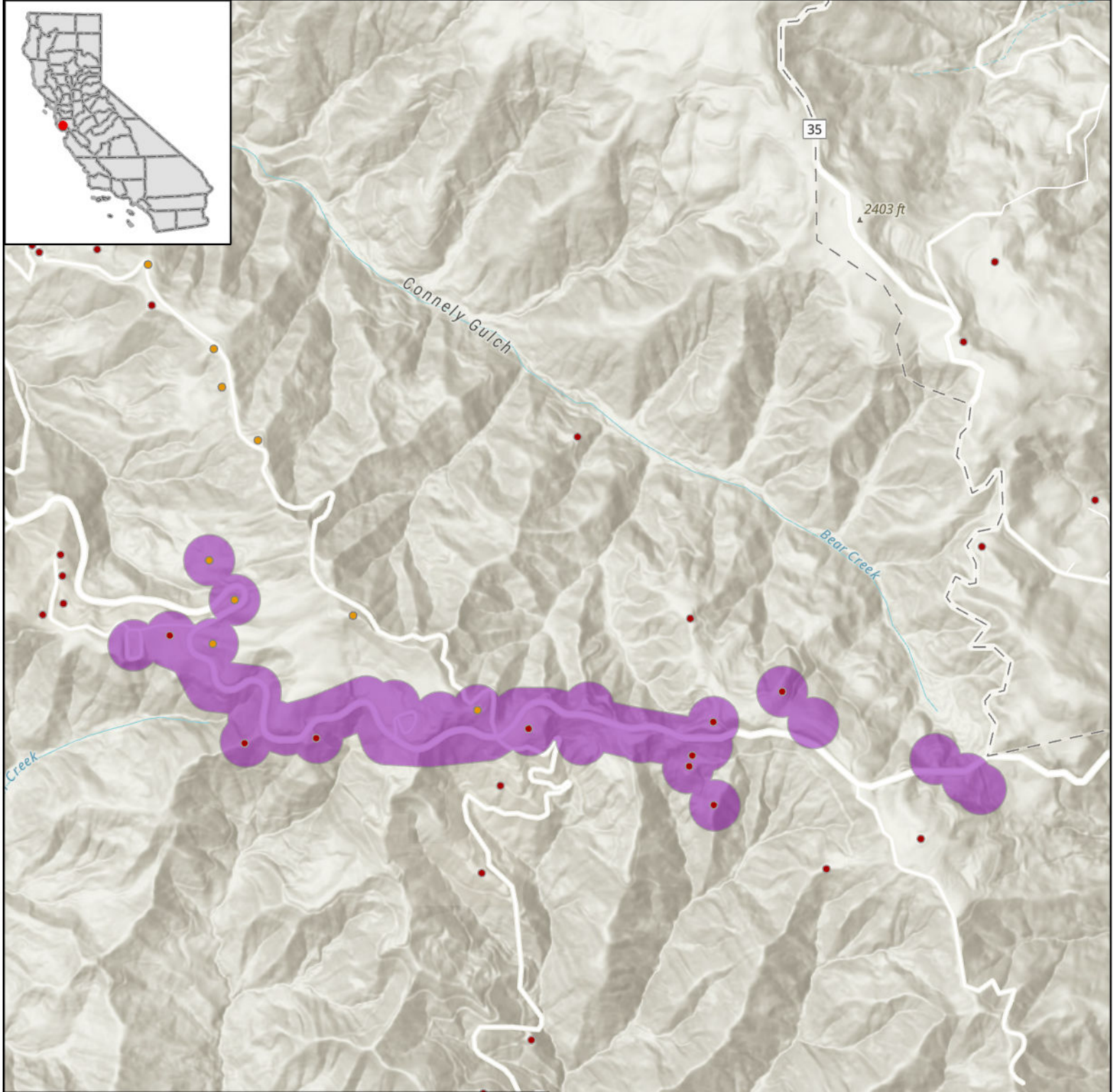
Surfnet Communications - Proposed Infrastructure Grant Application

Four County Fiber, Map 1 of 9 - June 1, 2023





STATE OF CALIFORNIA
Surfnet Communications - Proposed Infrastructure Grant Application
Four County Fiber, Bear Creek, Map 2 of 9 - June 1, 2023



LEGEND

CASF Eligible Locations

- Eligible
- Priority Eligible
- Project Area

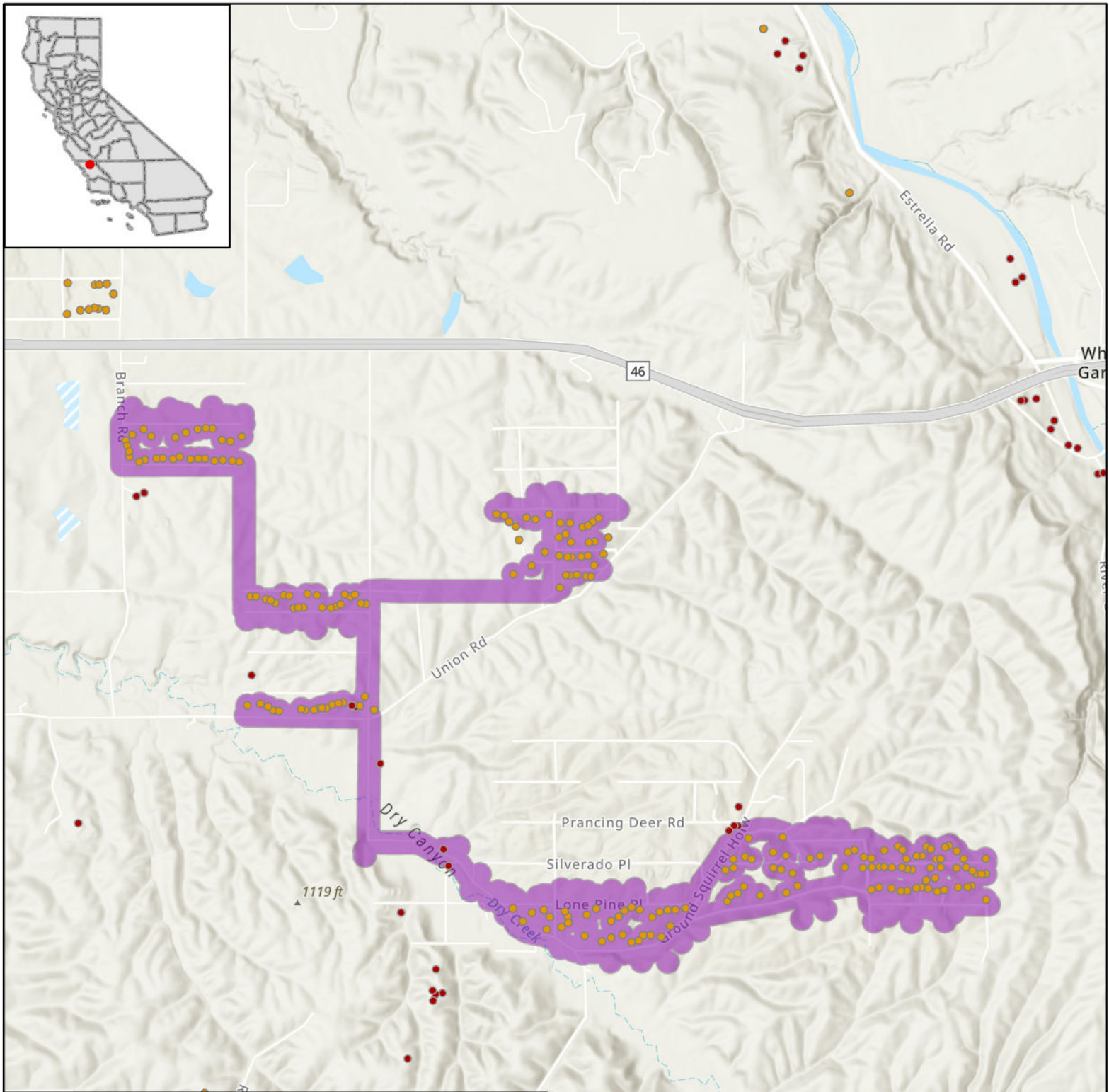
Esri, NASA, NGA, USGS, FEMA, County of Santa Clara, California State Parks, Esri, HERE, Garmin, SafeGraph, GeoTechnologies, Inc, METI/NASA, USGS, Bureau of Land Management, EPA, NPS, US Census Bureau, USDA



STATE OF CALIFORNIA

Surfnet Communications - Proposed Infrastructure Grant Application

Four County Fiber, Branch, Map 3 of 9 - June 1, 2023



LEGEND

CASF Eligible Locations

- Eligible
- Priority Eligible
- Project Area

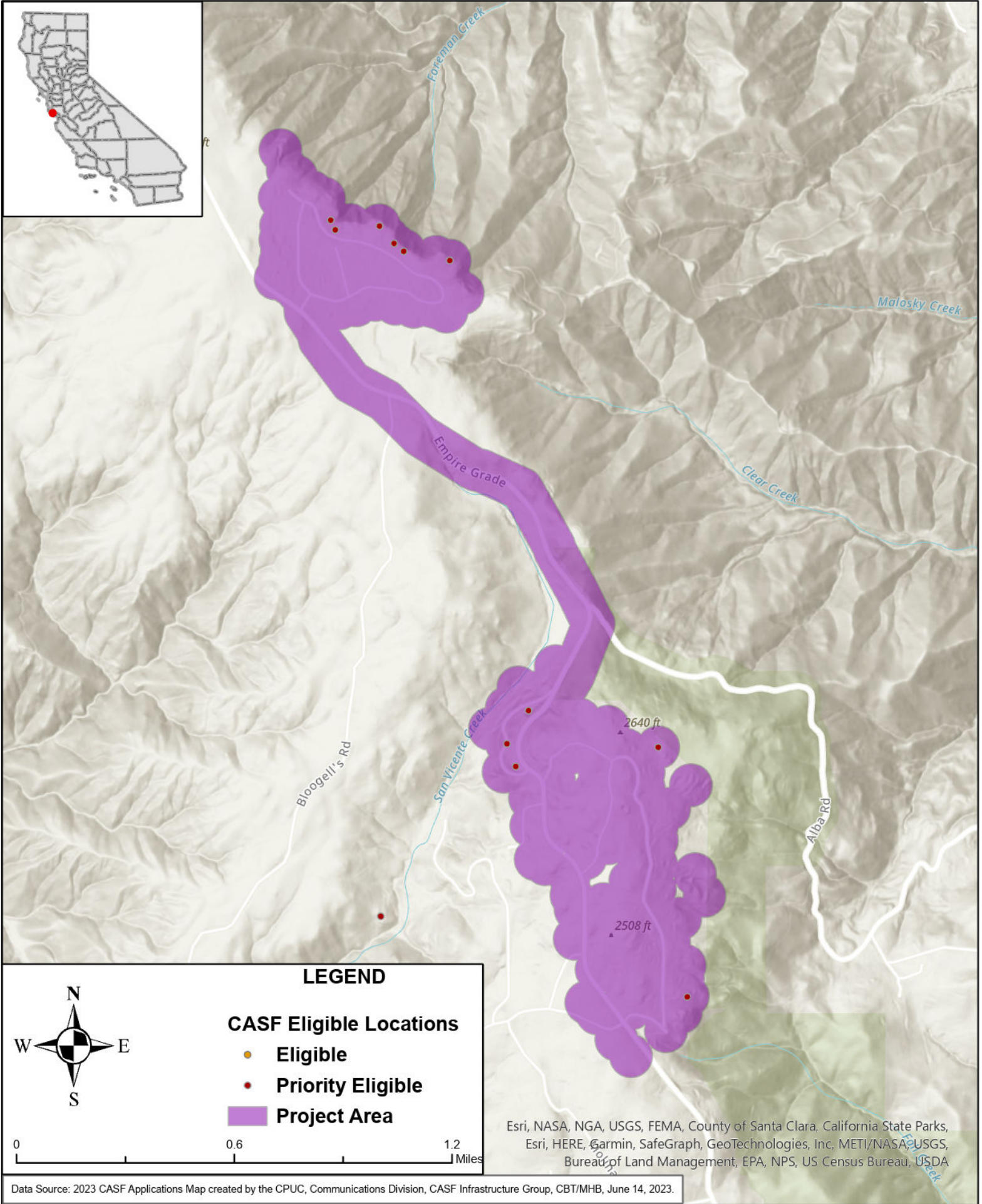
Esri, NASA, NGA, USGS, FEMA, California State Parks, Esri, HERE, Garmin, SafeGraph, GeoTechnologies, Inc, METI/NASA, USGS, Bureau of Land Management, EPA, NPS, USDA



STATE OF CALIFORNIA

Surfnet Communications - Proposed Infrastructure Grant Application

Four County Fiber, Empire Grade, Map 4 of 9 - June 1, 2023



LEGEND

- CASF Eligible Locations**
- Eligible
 - Priority Eligible
 - Project Area

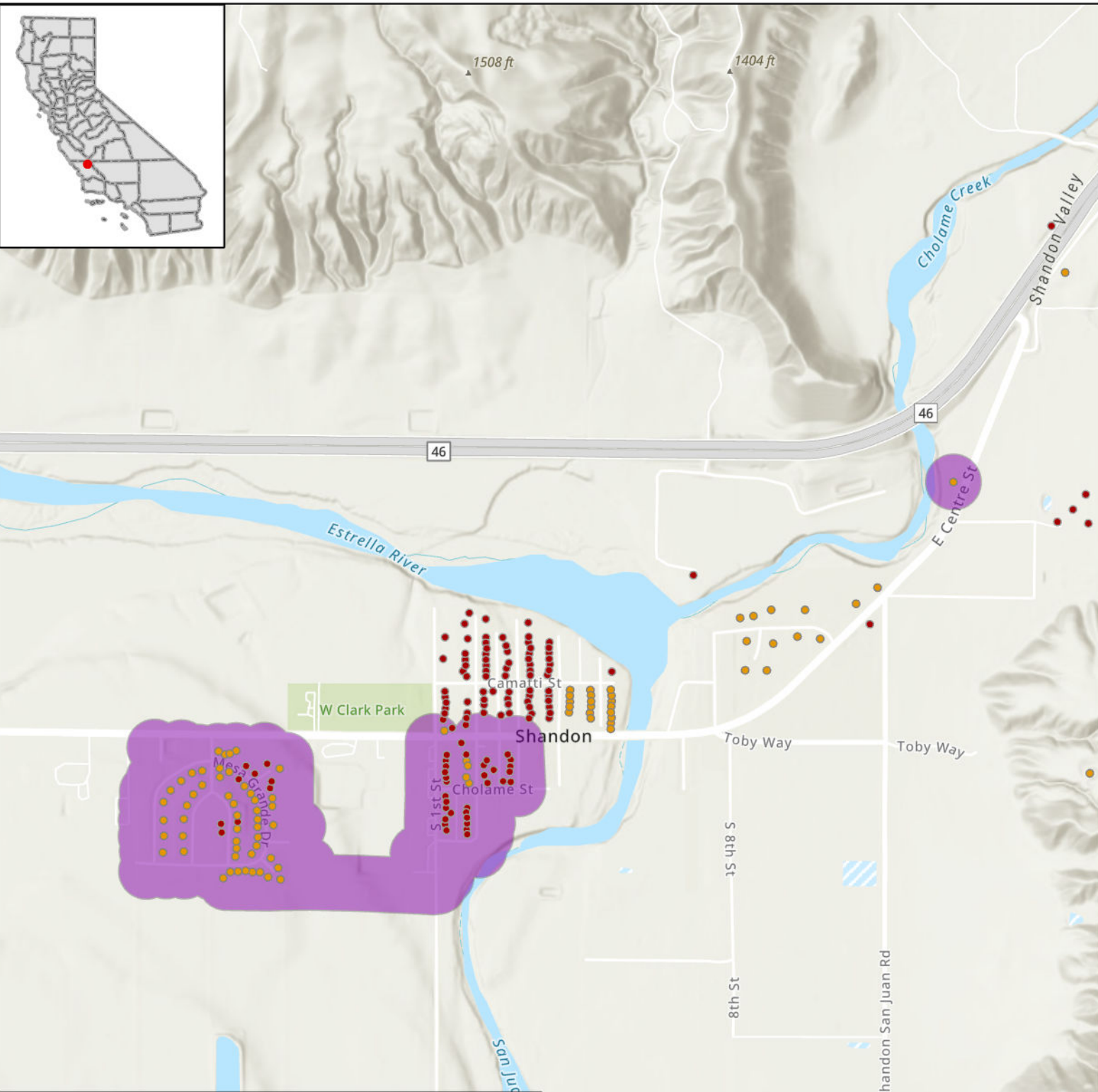
Esri, NASA, NGA, USGS, FEMA, County of Santa Clara, California State Parks, Esri, HERE, Garmin, SafeGraph, GeoTechnologies, Inc, METI/NASA, USGS, Bureau of Land Management, EPA, NPS, US Census Bureau, USDA



STATE OF CALIFORNIA

Surfnet Communications - Proposed Infrastructure Grant Application

Four County Fiber, Shandon, Map 6 of 9 - June 1, 2023



LEGEND

CASF Eligible Locations

- Eligible
- Priority Eligible
- Project Area

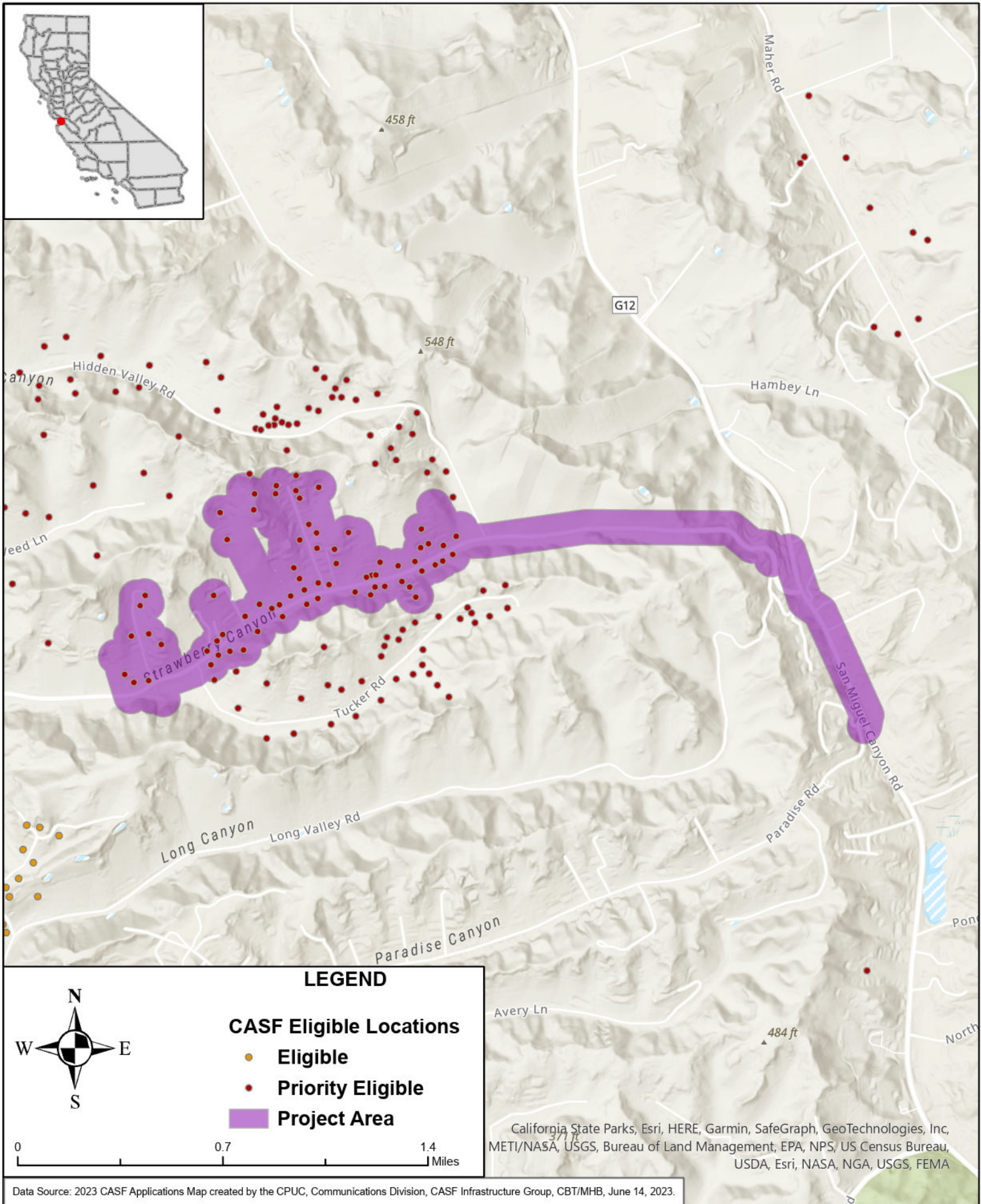
Esri, NASA, NGA, USGS, FEMA, Esri Community Maps Contributors, California State Parks, Esri, HERE, Garmin, SafeGraph, GeoTechnologies, Inc, METI/NASA, USGS, Bureau of Land Management, EPA, NPS, US Census Bureau, USDA



STATE OF CALIFORNIA

Surfnet Communications - Proposed Infrastructure Grant Application

Four County Fiber, Strawberry, Map 7 of 9 - June 1, 2023



LEGEND

- CASF Eligible Locations**
- Eligible
 - Priority Eligible
 - Project Area

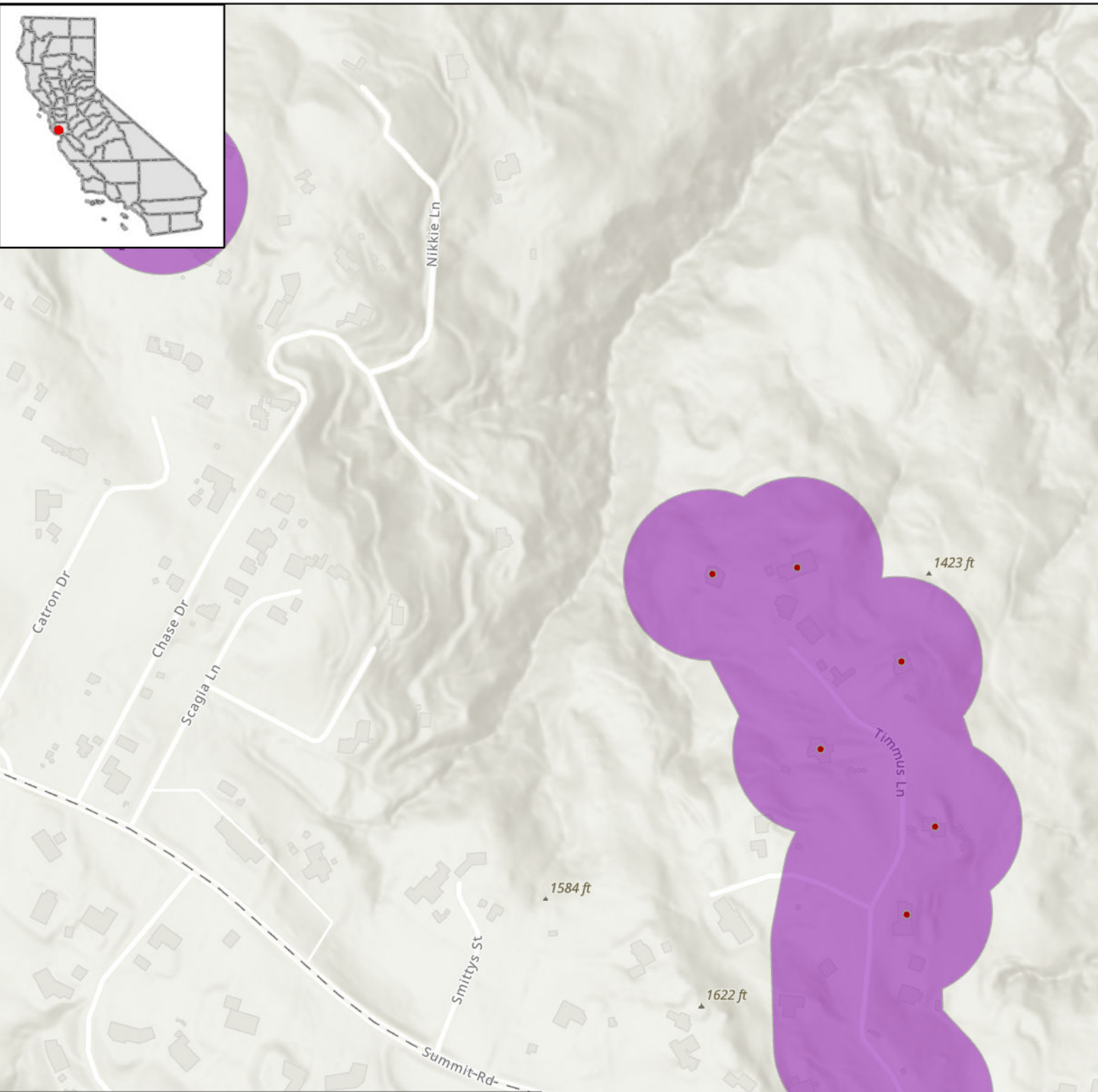


0 0.7 1.4
Miles

California State Parks, Esri, HERE, Garmin, SafeGraph, GeoTechnologies, Inc, METI/NASA, USGS, Bureau of Land Management, EPA, NPS, US Census Bureau, USDA, Esri, NASA, NGA, USGS, FEMA

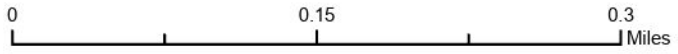


STATE OF CALIFORNIA
Surfnet Communications - Proposed Infrastructure Grant Application
Four County Fiber, Timmus, Map 8 of 9 - June 1, 2023



LEGEND

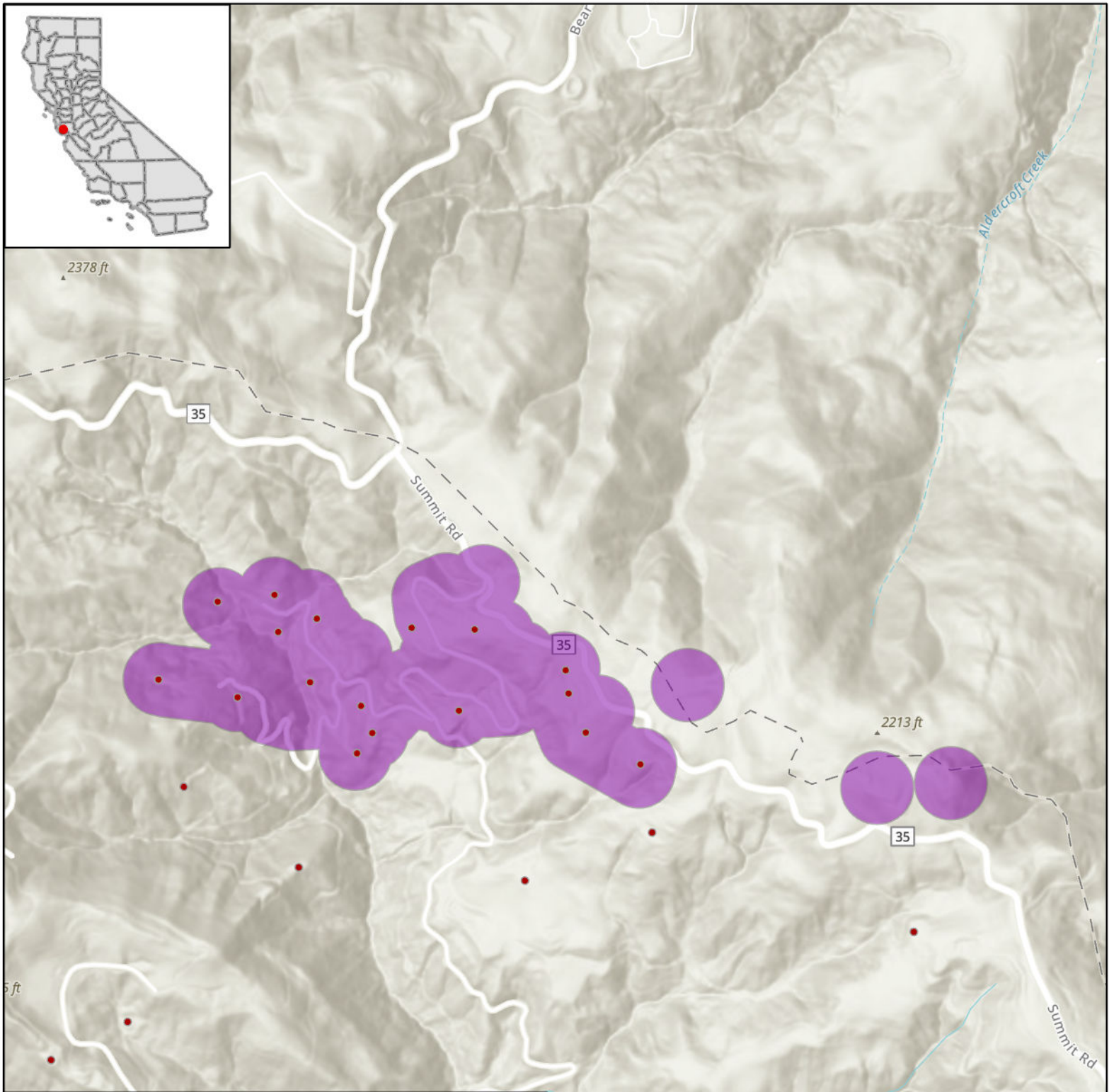
- CASF Eligible Locations**
- **Eligible**
 - **Priority Eligible**
 - Project Area**



Esri Community Maps Contributors, City of San Jose, County of Santa Clara, Santa Cruz County, California State Parks, © OpenStreetMap, Microsoft, Esri, HERE, Garmin, SafeGraph, GeoTechnologies, Inc, METI/NASA, USGS, Bureau of Land Management, EPA, NPS, US Census Bureau, USDA, Sources: Esri, Airbus DS, USGS, NGA, NASA, CGIAR, N Robinson, NCEAS, NLS, OS, NMA, Geodatastyrelsen, Rijkswaterstaat, GSA, Geoland, FEMA, Intermap and the GIS user community



STATE OF CALIFORNIA
Surfnet Communications - Proposed Infrastructure Grant Application
Four County Fiber, Zayante, Map 9 of 9 - June 1, 2023



LEGEND

CASF Eligible Locations

- Eligible
- Priority Eligible
- Project Area

Esri Community Maps Contributors, County of Santa Clara, California State Parks, Esri, HERE, Garmin, SafeGraph, GeoTechnologies, Inc, METI/NASA, USGS, Bureau of Land Management, EPA, NPS, US Census Bureau, USDA, Esri, NASA, NGA, USGS, FEMA