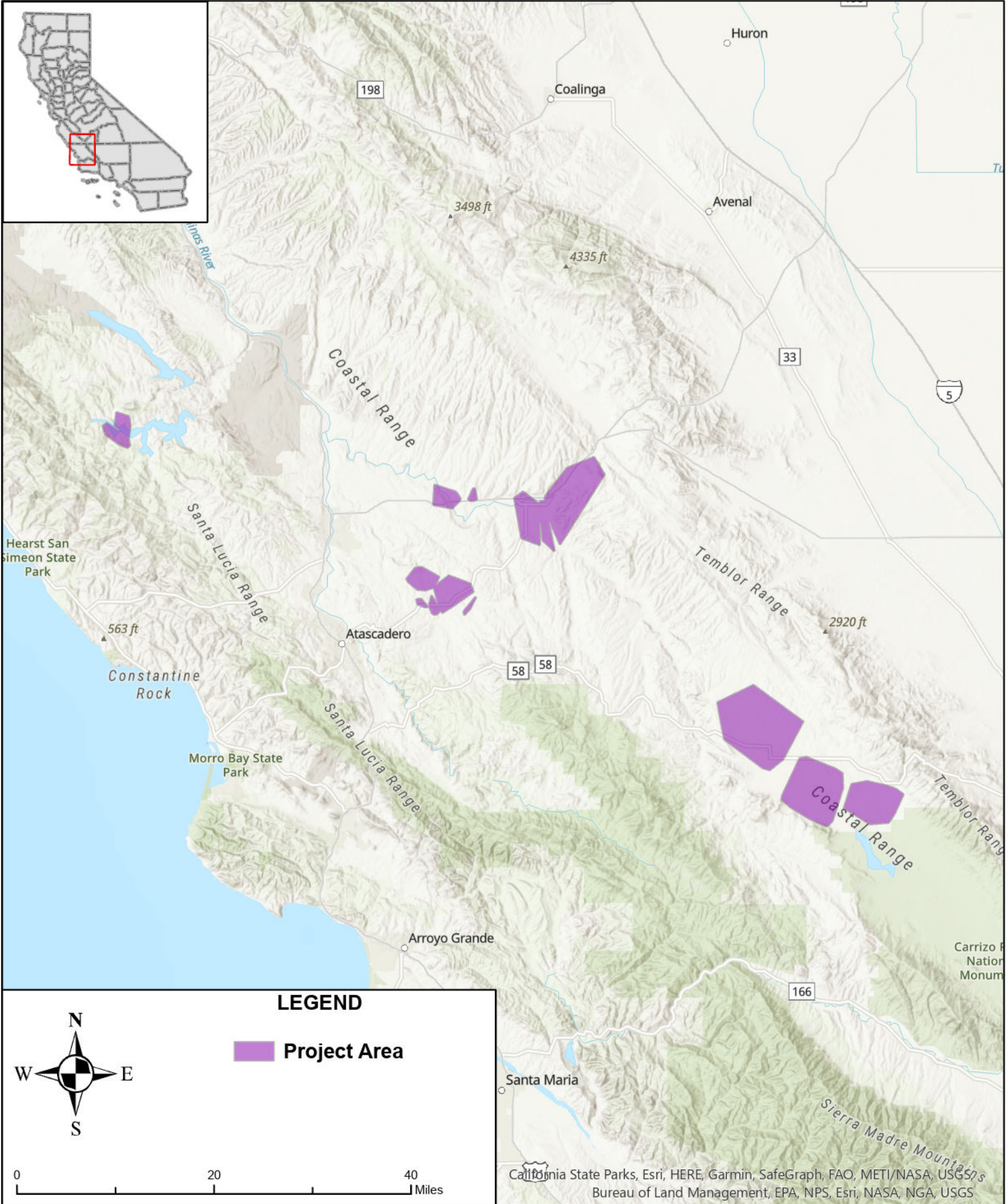




STATE OF CALIFORNIA

RanchWifi - Proposed Infrastructure Grant Application

Connect SLO County, Map 1 of 6 - June 1, 2023



LEGEND

 Project Area



0 20 40 Miles

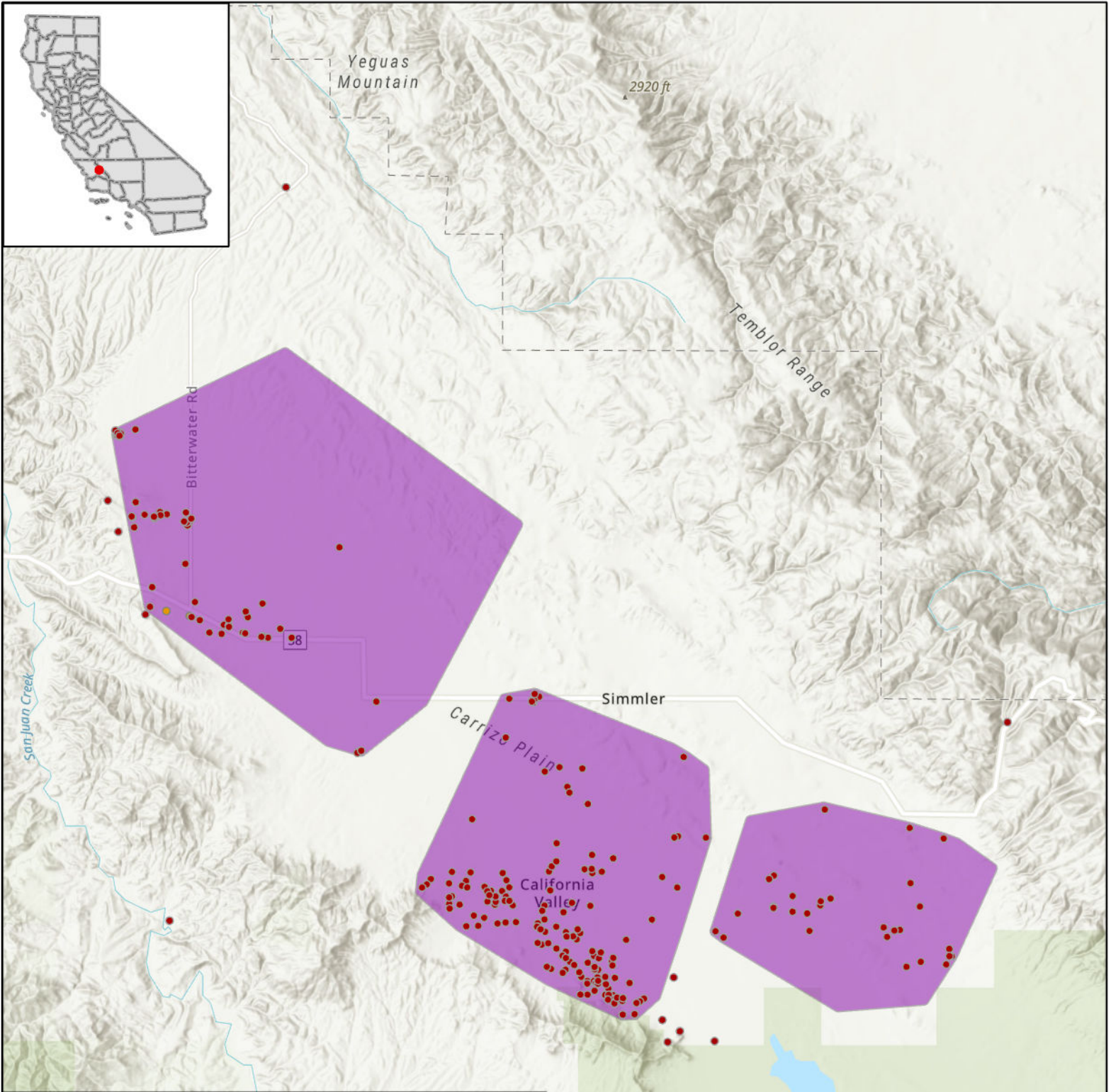
California State Parks, Esri, HERE, Garmin, SafeGraph, FAO, METI/NASA, USGS, Bureau of Land Management, EPA, NPS, Esri, NASA, NGA, USGS



STATE OF CALIFORNIA

RanchWifi - Proposed Infrastructure Grant Application

Connect SLO County, CA Valley, Map 2 of 6 - June 1, 2023



LEGEND

CASF Eligible Locations

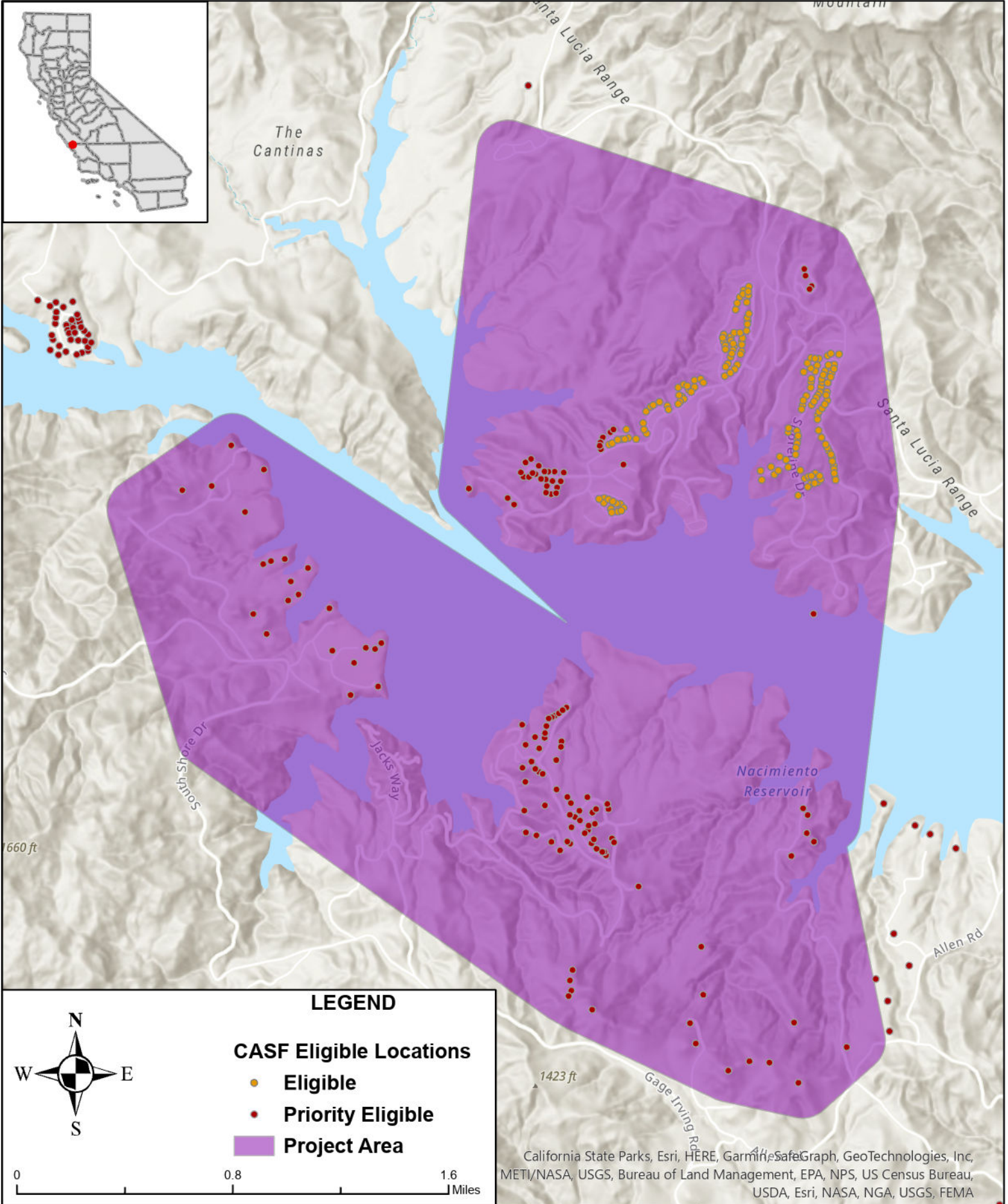
- Eligible
- Priority Eligible
- Project Area

0 5 10 Miles

Esri, NASA, NGA, USGS, FEMA, California State Parks, Esri, HERE, Garmin, SafeGraph, METI/NASA, USGS, Bureau of Land Management, EPA, NPS, USDA



STATE OF CALIFORNIA
RanchWifi - Proposed Infrastructure Grant Application
Connect SLO County, Cal Shasta-Oak Shores, Map 3 of 6 - June 1, 2023

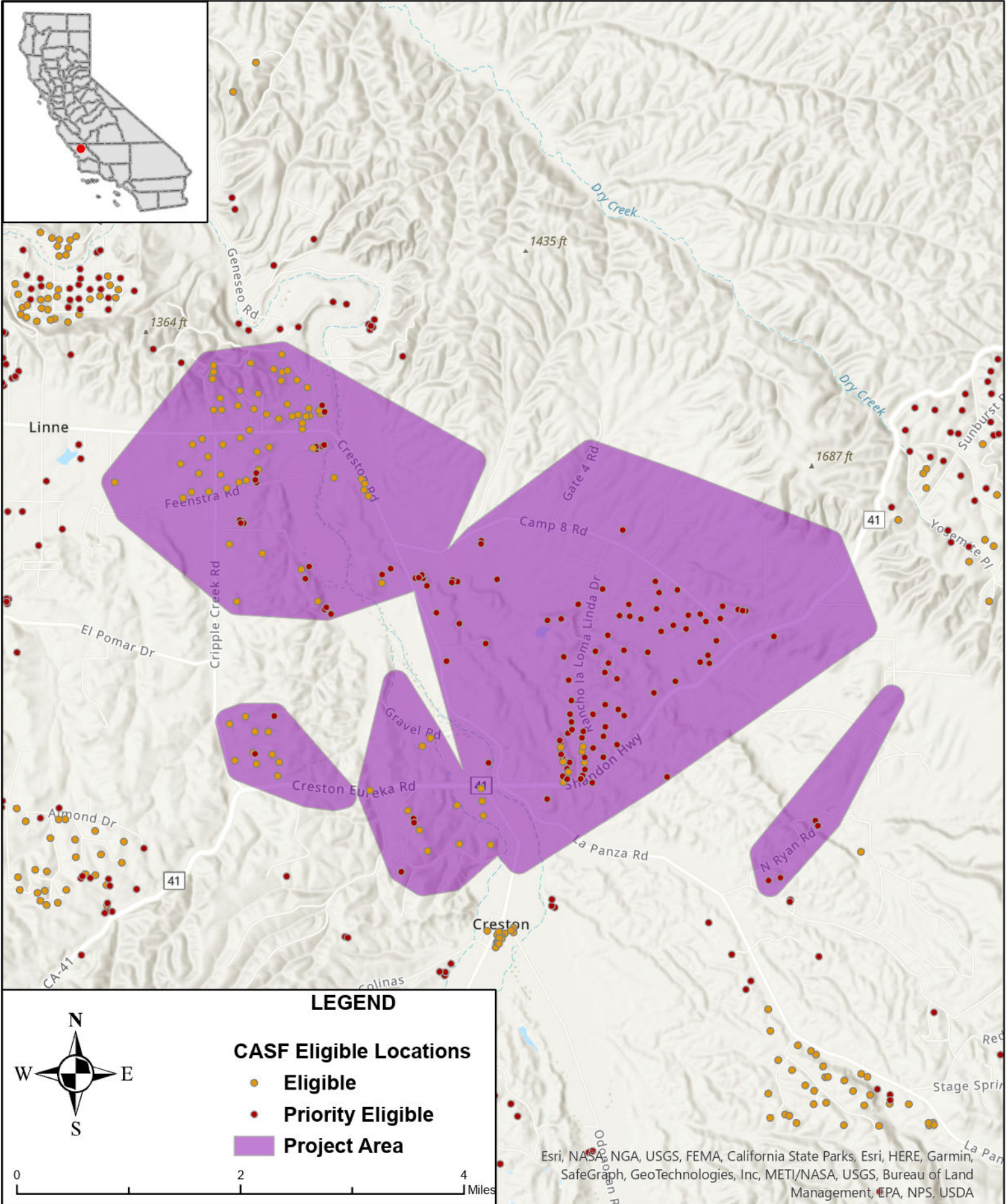




STATE OF CALIFORNIA

RanchWifi - Proposed Infrastructure Grant Application

Connect SLO County, Creston, Map 4 of 6 - June 1, 2023



LEGEND

CASF Eligible Locations

- Eligible
- Priority Eligible
- Project Area

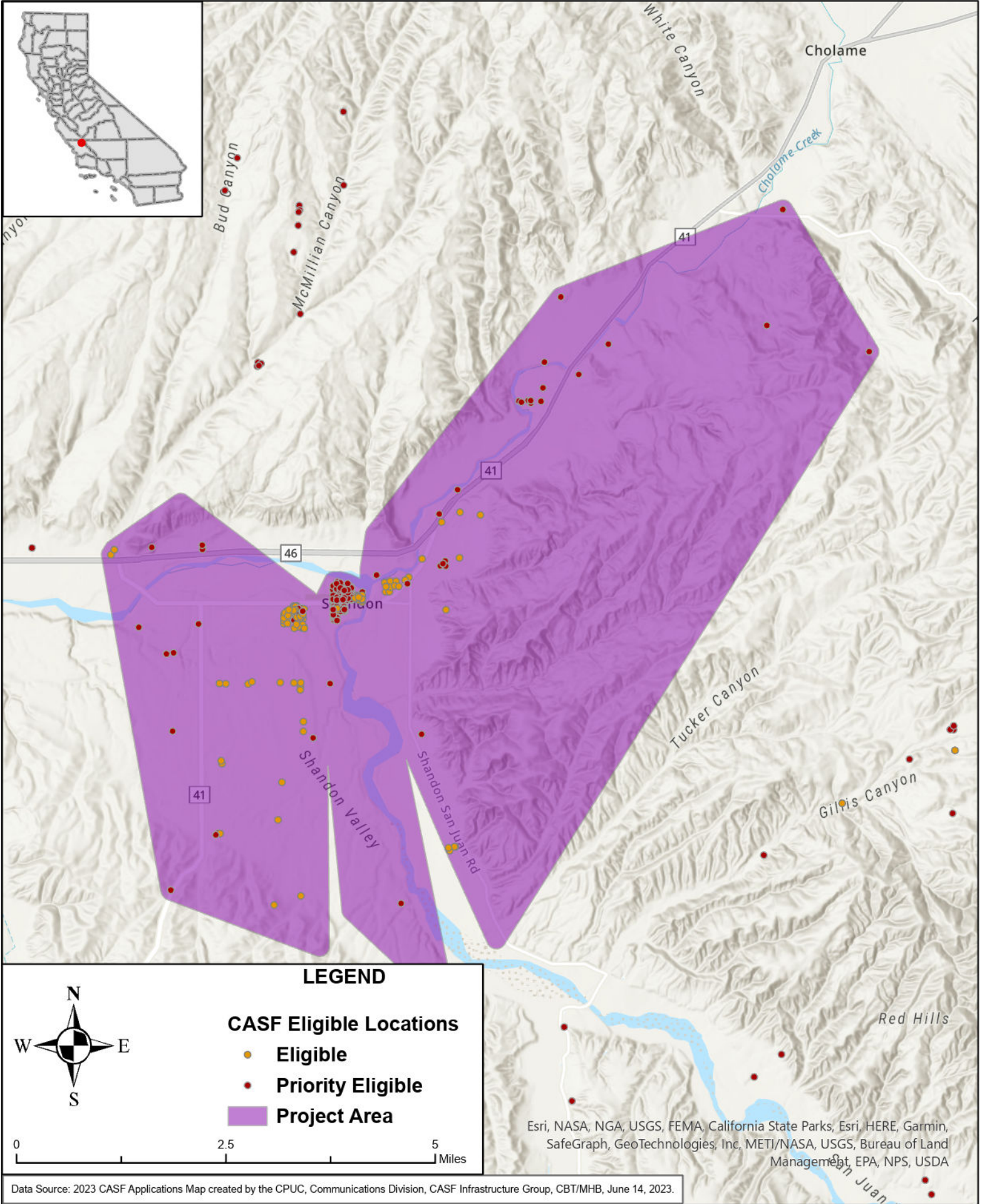
Esri, NASA, NGA, USGS, FEMA, California State Parks, Esri, HERE, Garmin, SafeGraph, GeoTechnologies, Inc, METI/NASA, USGS, Bureau of Land Management, EPA, NPS, USDA



STATE OF CALIFORNIA

RanchWifi - Proposed Infrastructure Grant Application

Connect SLO County, Shandon, Map 5 of 6 - June 1, 2023



LEGEND

CASF Eligible Locations

- Eligible
- Priority Eligible
- Project Area



0 2.5 5 Miles

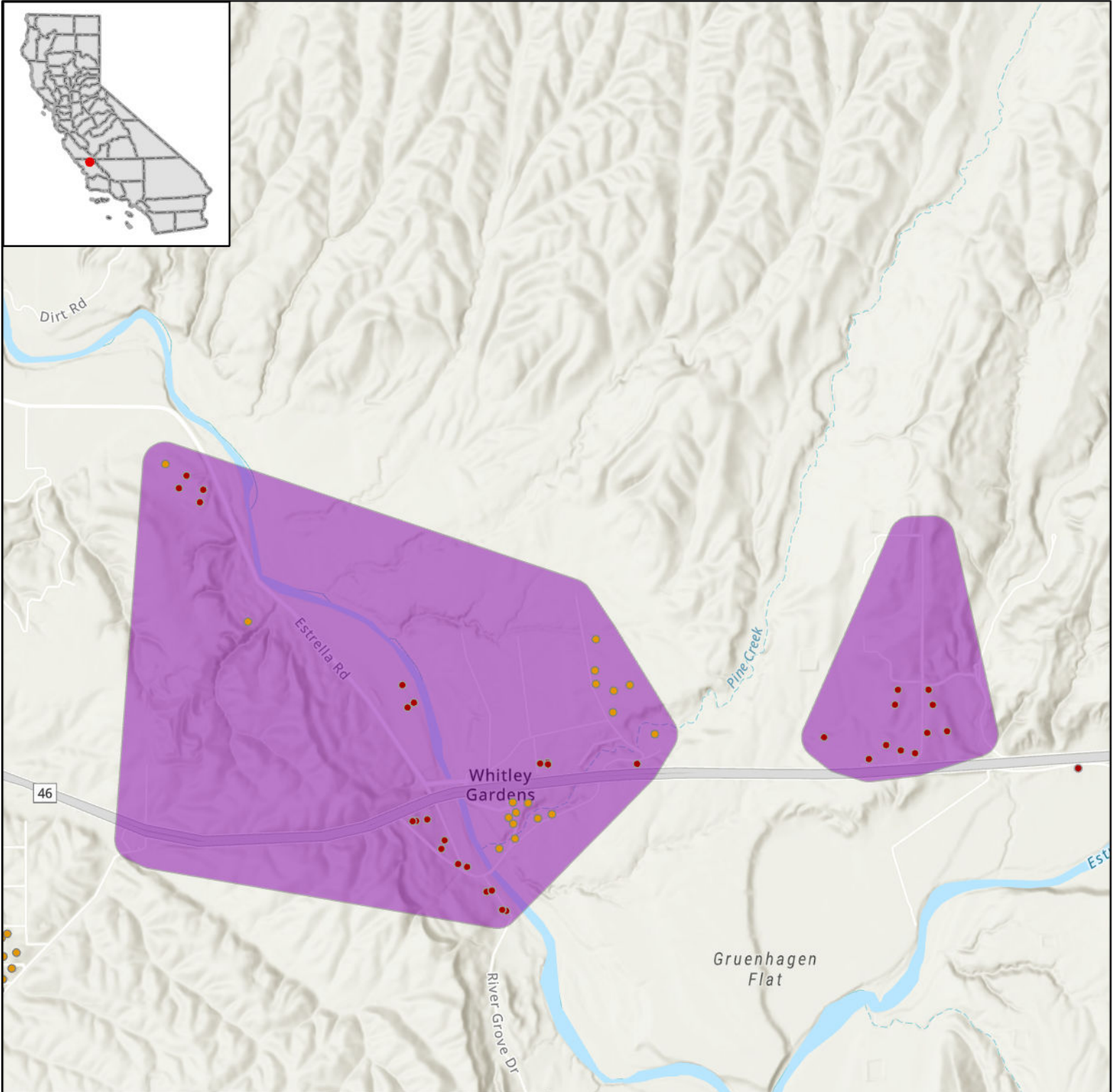
Esri, NASA, NGA, USGS, FEMA, California State Parks, Esri, HERE, Garmin, SafeGraph, GeoTechnologies, Inc, METI/NASA, USGS, Bureau of Land Management, EPA, NPS, USDA



STATE OF CALIFORNIA

RanchWifi - Proposed Infrastructure Grant Application

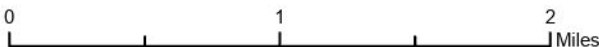
Connect SLO County, Whitley Gardens, Map 6 of 6 - June 1, 2023



LEGEND

CASF Eligible Locations

- Eligible
- Priority Eligible
- Project Area



1332 ft
 ▲ Esri, NASA, NGA, USGS, FEMA, California State Parks, Esri, HERE, Garmin, SafeGraph, GeoTechnologies, Inc, METI/NASA, USGS, Bureau of Land Management, EPA, NPS, USDA