



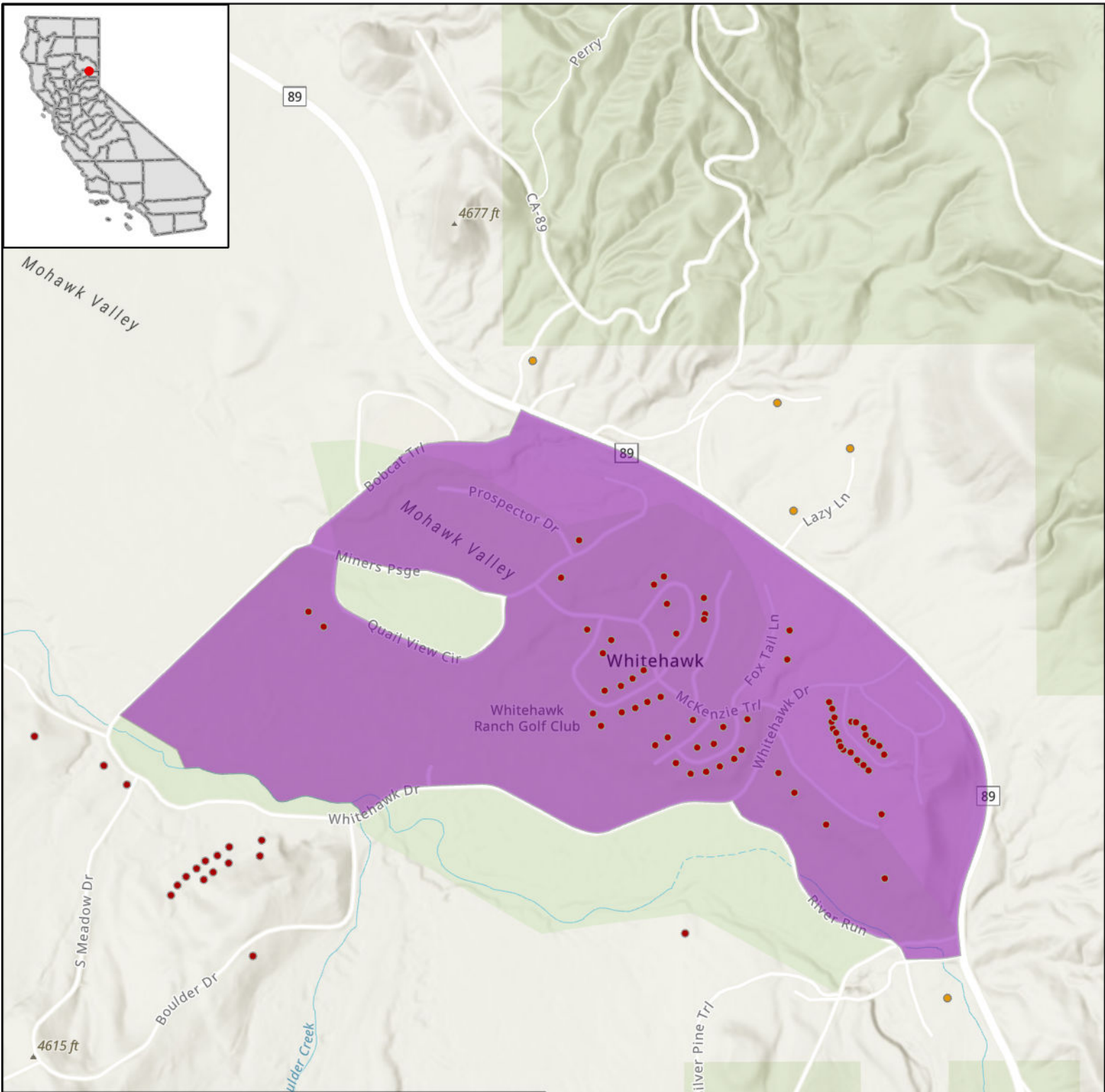
# STATE OF CALIFORNIA

## Plumas-Sierra Telecommunications - Proposed Infrastructure Grant Application

### Whitehawk - June 1, 2023



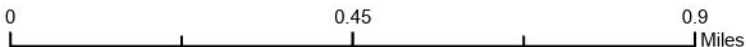
Mohawk Valley



#### LEGEND

#### CASF Eligible Locations

- Eligible
- Priority Eligible
- Project Area



Esri, NASA, NGA, USGS, FEMA, Esri Community Maps Contributors, California State Parks, Esri, HERE, Garmin, SafeGraph, GeoTechnologies, Inc., METI/NASA, USGS, Bureau of Land Management, EPA, NPS, US Census Bureau, USDA