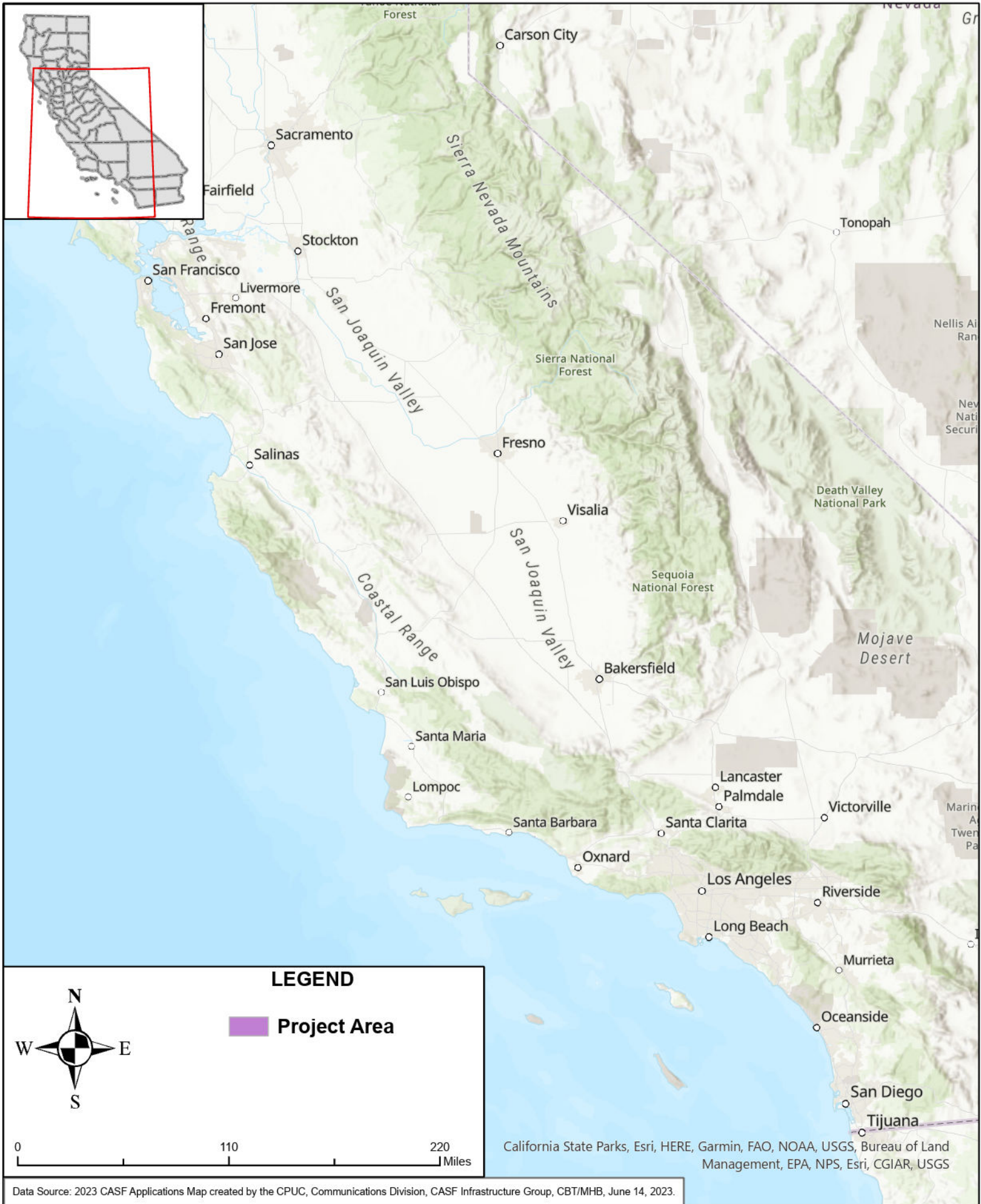





STATE OF CALIFORNIA



Kwikbit Internet - Proposed Infrastructure Grant Application

Mobile Home Park 1, Map 1 of 13 - June 1, 2023



LEGEND

 **Project Area**

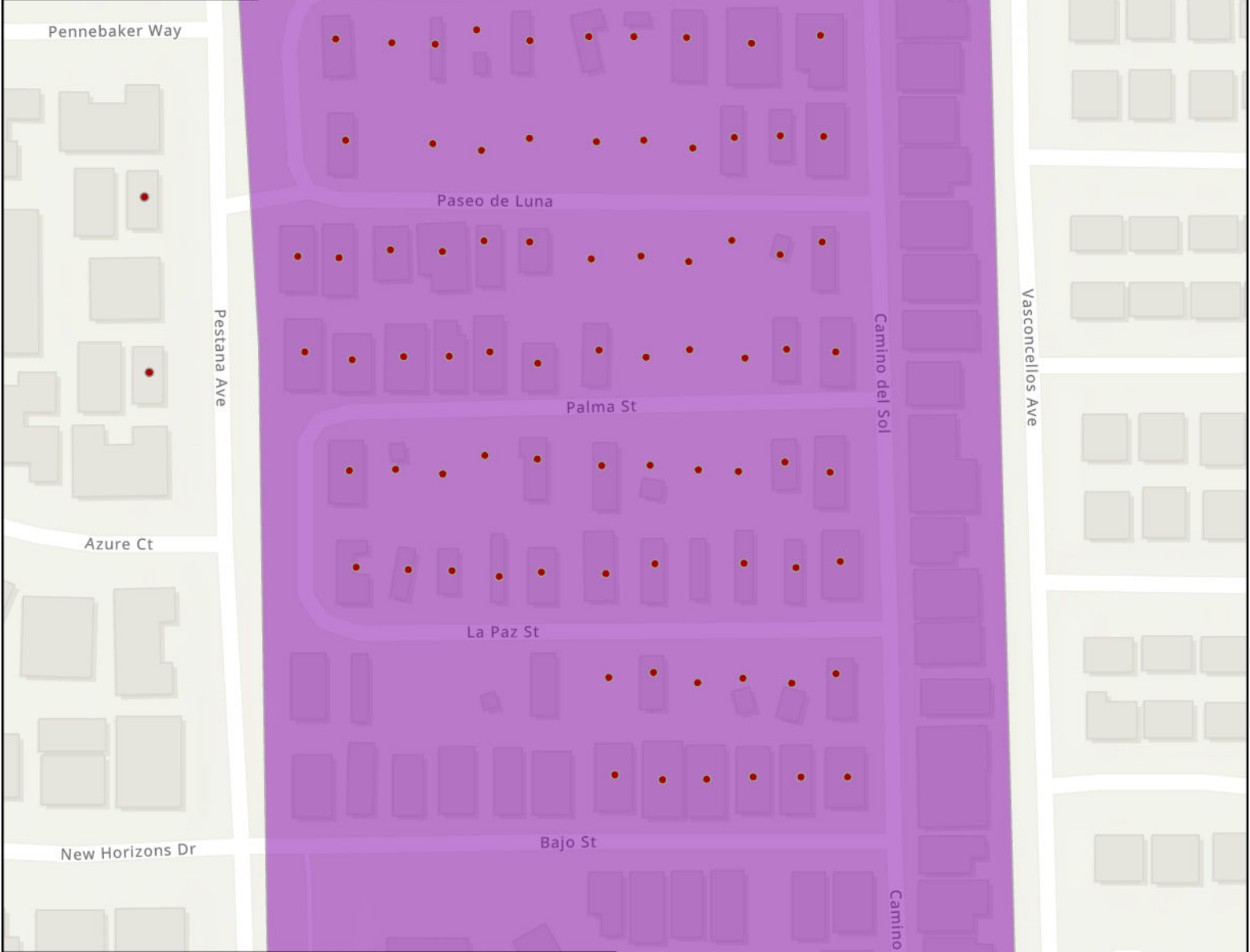
California State Parks, Esri, HERE, Garmin, FAO, NOAA, USGS, Bureau of Land Management, EPA, NPS, Esri, CGIAR, USGS



STATE OF CALIFORNIA

Kwikbit Internet - Proposed Infrastructure Grant Application

Mobile Home Park 1, Almond Blossom Estates, Map 2 of 13 - June 1, 2023



LEGEND

CASF Eligible Locations

- **Eligible**
- **Priority Eligible**
- Project Area**

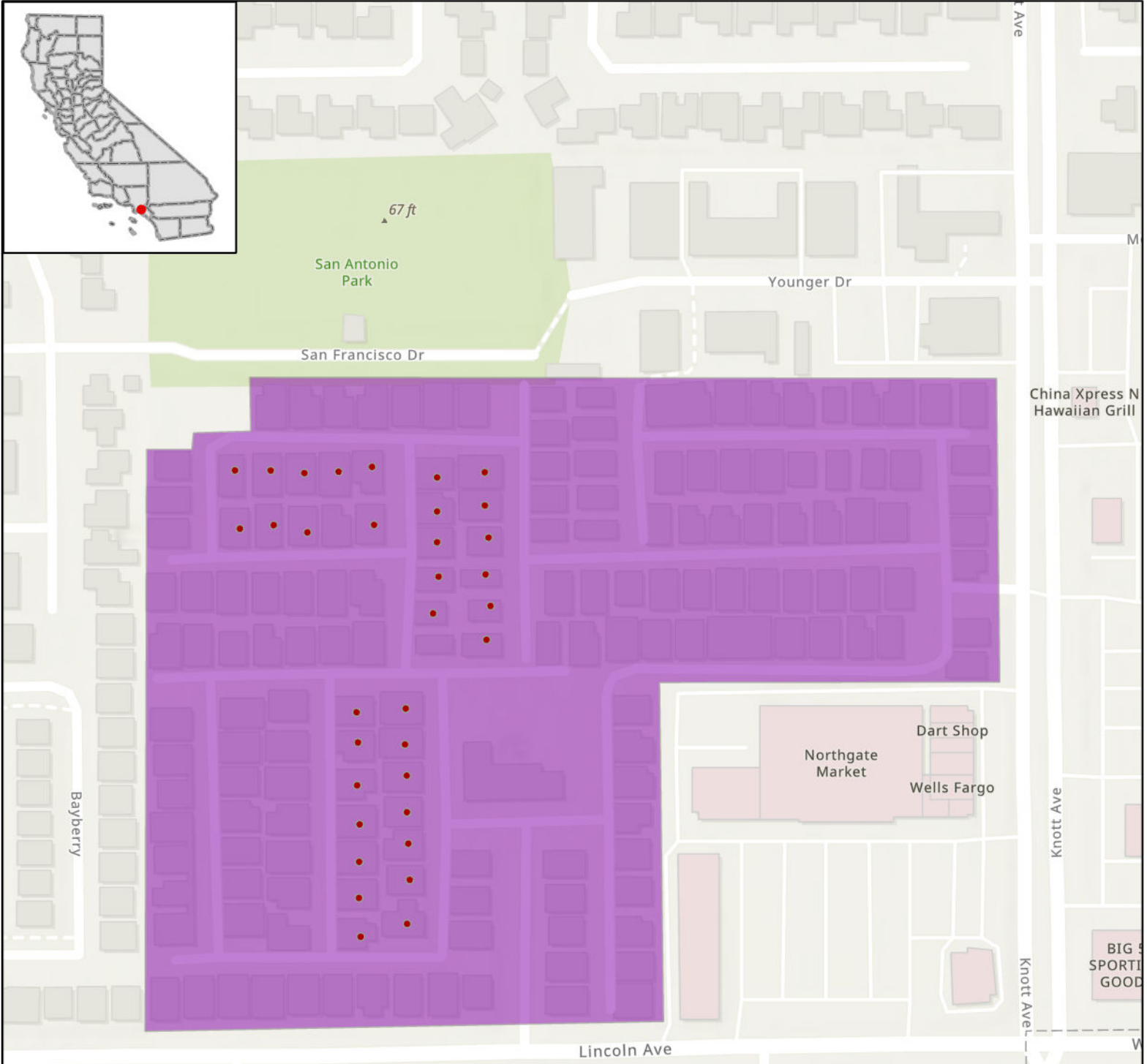
Esri Community Maps Contributors, San Joaquin County GIS/Planning, San Joaquin County Public Works, California State Parks, © OpenStreetMap, Microsoft, Esri, HERE, Garmin, SafeGraph, GeoTechnologies, Inc, METI/NASA, USGS, Bureau of Land Management, EPA, NPS, US Census Bureau, USDA, Sources: Esri, Airbus DS, USGS, NGA, NASA, CGIAR, N Robinson, NCEAS, NLS, OS, NMA, Geodatastyrelsen, Rijkswaterstaat, GSA, Geoland, FEMA, Intermap and the GIS user community



STATE OF CALIFORNIA

Kwikbit Internet - Proposed Infrastructure Grant Application

Mobile Home Park 1, Buena Villa, Map 3 of 13 - June 1, 2023



LEGEND

CASF Eligible Locations

- Eligible
- Priority Eligible
- Project Area

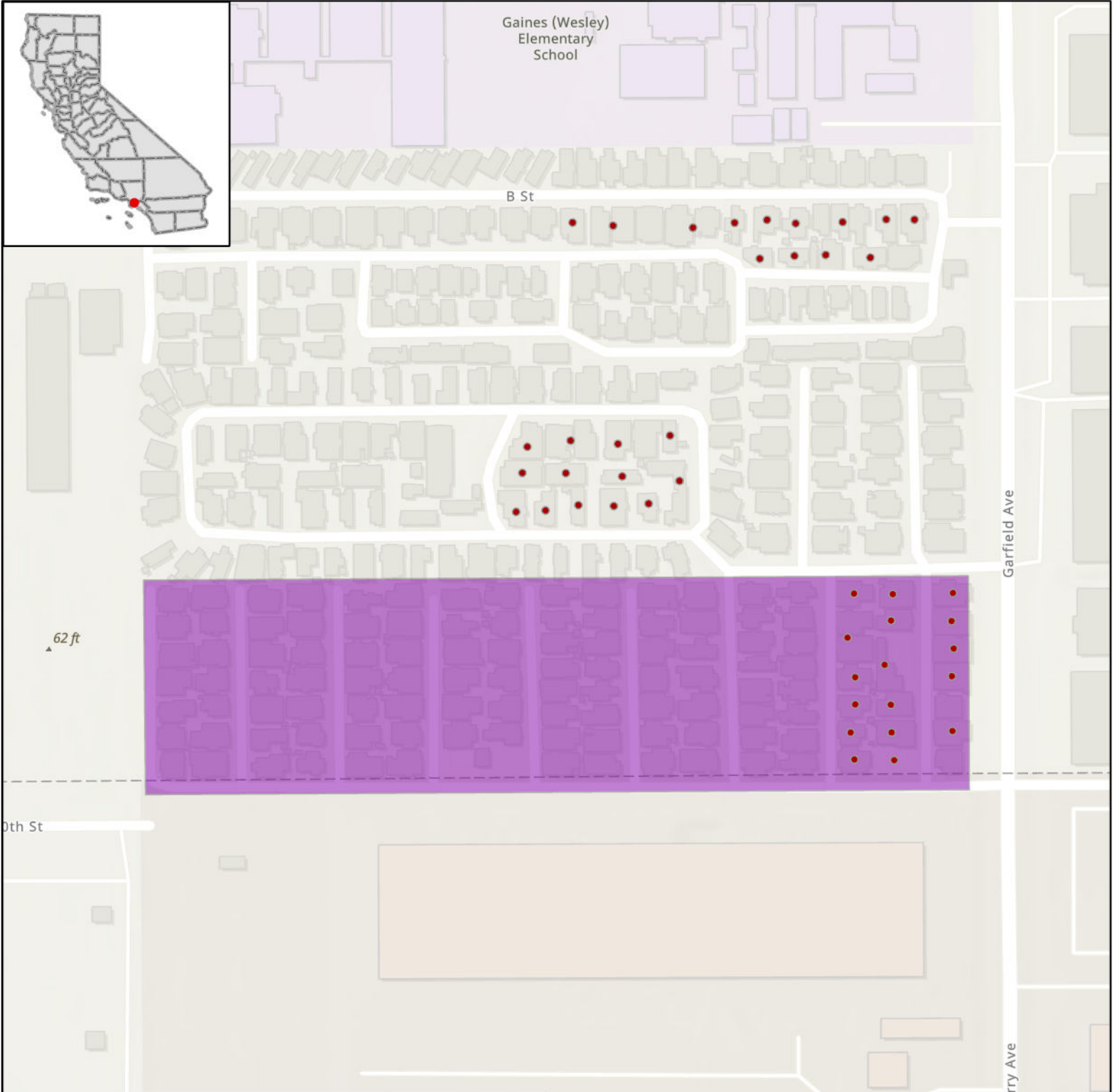
Sources: Esri, Airbus DS, USGS, NGA, NASA, CGIAR, N Robinson, NCEAS, NLS, OS, NMA, Geodatastyrelsen, Rijkswaterstaat, GSA, Geoland, FEMA, Intermap and the GIS user community, Esri Community Maps Contributors, City of Anaheim, County of Los Angeles, California State Parks, © OpenStreetMap, Microsoft, Esri, HERE, Garmin, SafeGraph, GeoTechnologies, Inc, METI/NASA, USGS, Bureau of Land Management, EPA, NPS, US Census Bureau, USDA



STATE OF CALIFORNIA

Kwikbit Internet - Proposed Infrastructure Grant Application

Mobile Home Park 1, Cherryfield Village, Map 4 of 13 - June 1, 2023



LEGEND

CASF Eligible Locations

- Eligible
- Priority Eligible
- Project Area

0 0.09 0.17 Miles

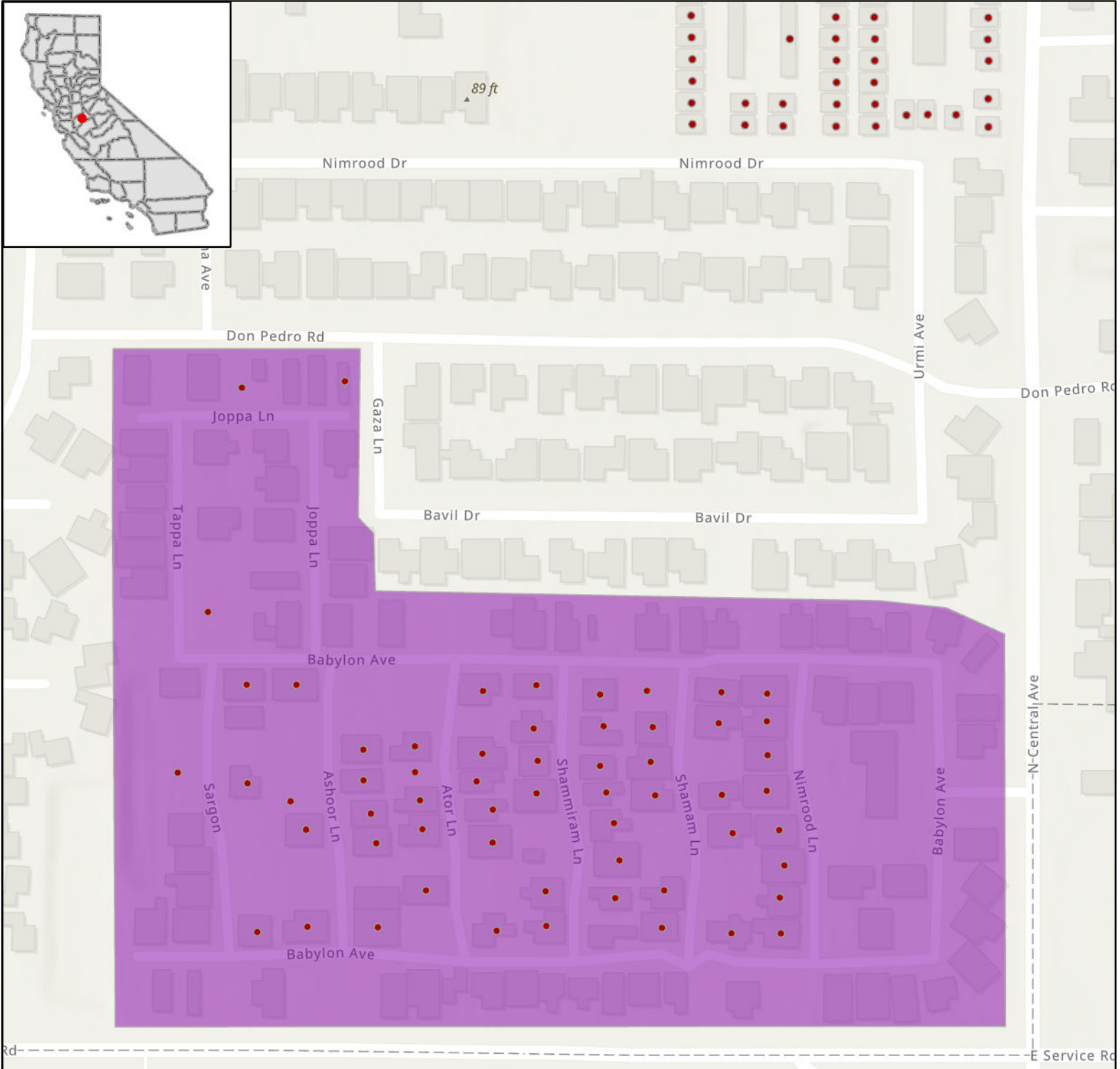
Sources: Esri, Airbus DS, USGS, NGA, NASA, CGIAR, N Robinson, NCEAS, NLS, OS, NMA, Geodastystyrelsen, Rijkswaterstaat, GSA, Geoland, FEMA, Intermap and the GIS user community, Esri Community Maps Contributors, City of Long Beach, County of Los Angeles, California State Parks, © OpenStreetMap, Microsoft, Esri, HERE, Garmin, SafeGraph, GeoTechnologies, Inc, METI/NASA, USGS, Bureau of Land Management, EPA, NPS, US Census Bureau, USDA



STATE OF CALIFORNIA

Kwikbit Internet - Proposed Infrastructure Grant Application

Mobile Home Park 1, Colony Park, Map 5 of 13 - June 1, 2023



LEGEND

CASF Eligible Locations

- Eligible
- Priority Eligible
- Project Area

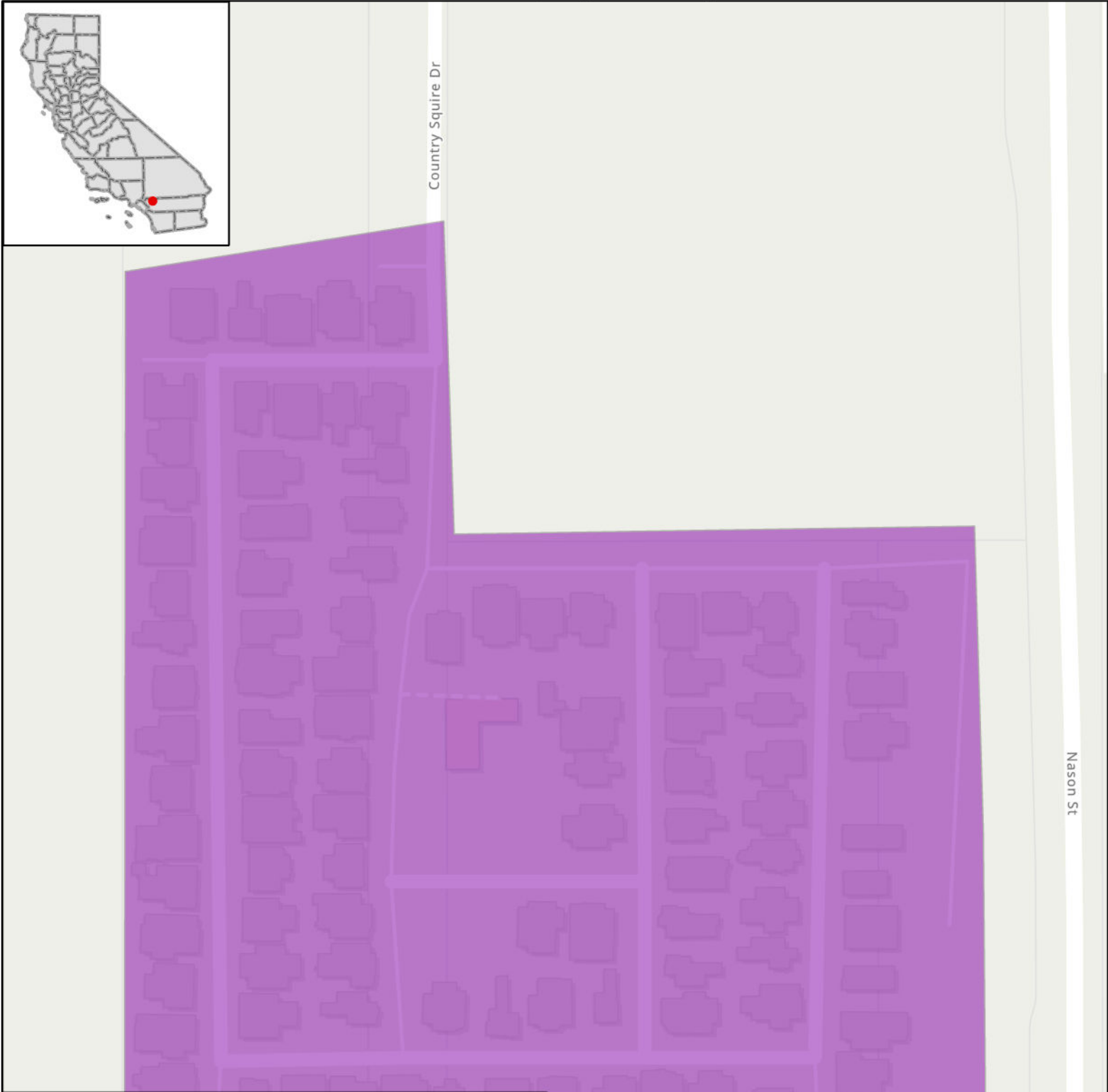


0 0.09 0.17 Miles

Esri Community Maps Contributors, Merced County Association of Gov, San Joaquin County GIS/Planning, San Joaquin County Public Works, California State Parks, © OpenStreetMap, Microsoft, Esri, HERE, Garmin, SafeGraph, GeoTechnologies, Inc, METI/NASA, USGS, Bureau of Land Management, EPA, NPS, US Census Bureau, USDA, Sources: Esri, Airbus DS, USGS, NGA, NASA, CGIAR, N Robinson, NCEAS, NLS, OS, NMA, Geodatastyrelsen, Rijkswaterstaat, GSA, Geoland, FEMA, Intermap and the GIS user community



STATE OF CALIFORNIA
Kwikbit Internet - Proposed Infrastructure Grant Application
Mobile Home Park 1, Country Squires, Map 6 of 13 - June 1, 2023



LEGEND

CASF Eligible Locations

- **Eligible**
- **Priority Eligible**
- Project Area**

0 0.06 0.11
 |-----|-----|-----|
 Miles

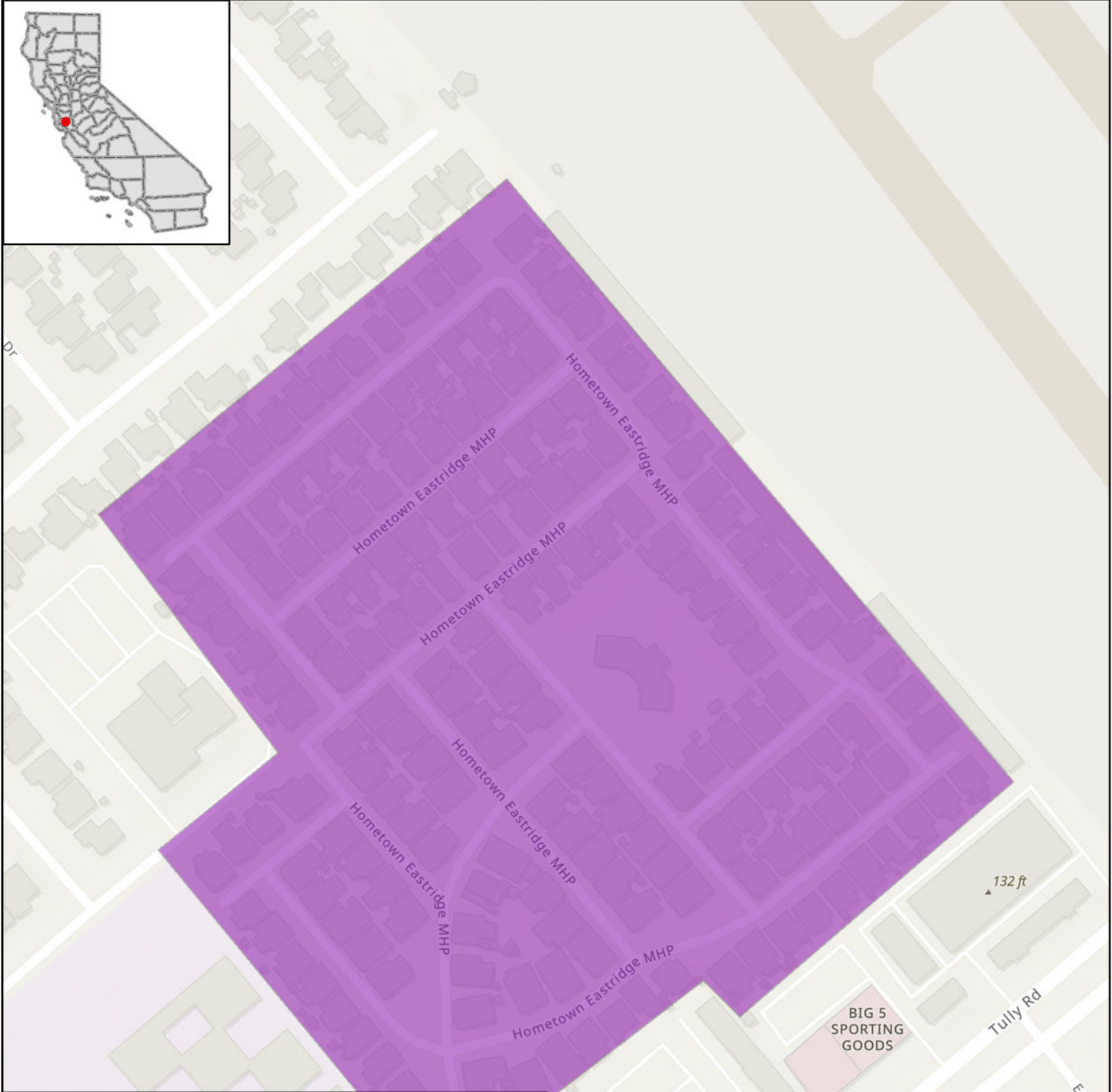
Sources: Esri, Airbus DS, USGS, NGA, NASA, CGIAR, N Robinson, NCEAS, NLS, OS, NMA, Geodatastore.nl, Rijkswaterstaat, GSA, Geoland, FEMA, Intermap and the GIS user community, Esri Community Maps Contributors, Loma Linda University, UC Riverside, City of Moreno Valley, County of Riverside, County of San Bernardino, California State Parks, © OpenStreetMap, Microsoft, Esri, HERE, Garmin, SafeGraph, GeoTechnologies, Inc, METI/NASA, USGS, Bureau of Land Management, EPA, NPS, US Census Bureau, USDA



STATE OF CALIFORNIA

Kwikbit Internet - Proposed Infrastructure Grant Application

Mobile Home Park 1, Eastridge Estates, Map 7 of 13 - June 1, 2023



LEGEND

CASF Eligible Locations

- Eligible
- Priority Eligible
- Project Area

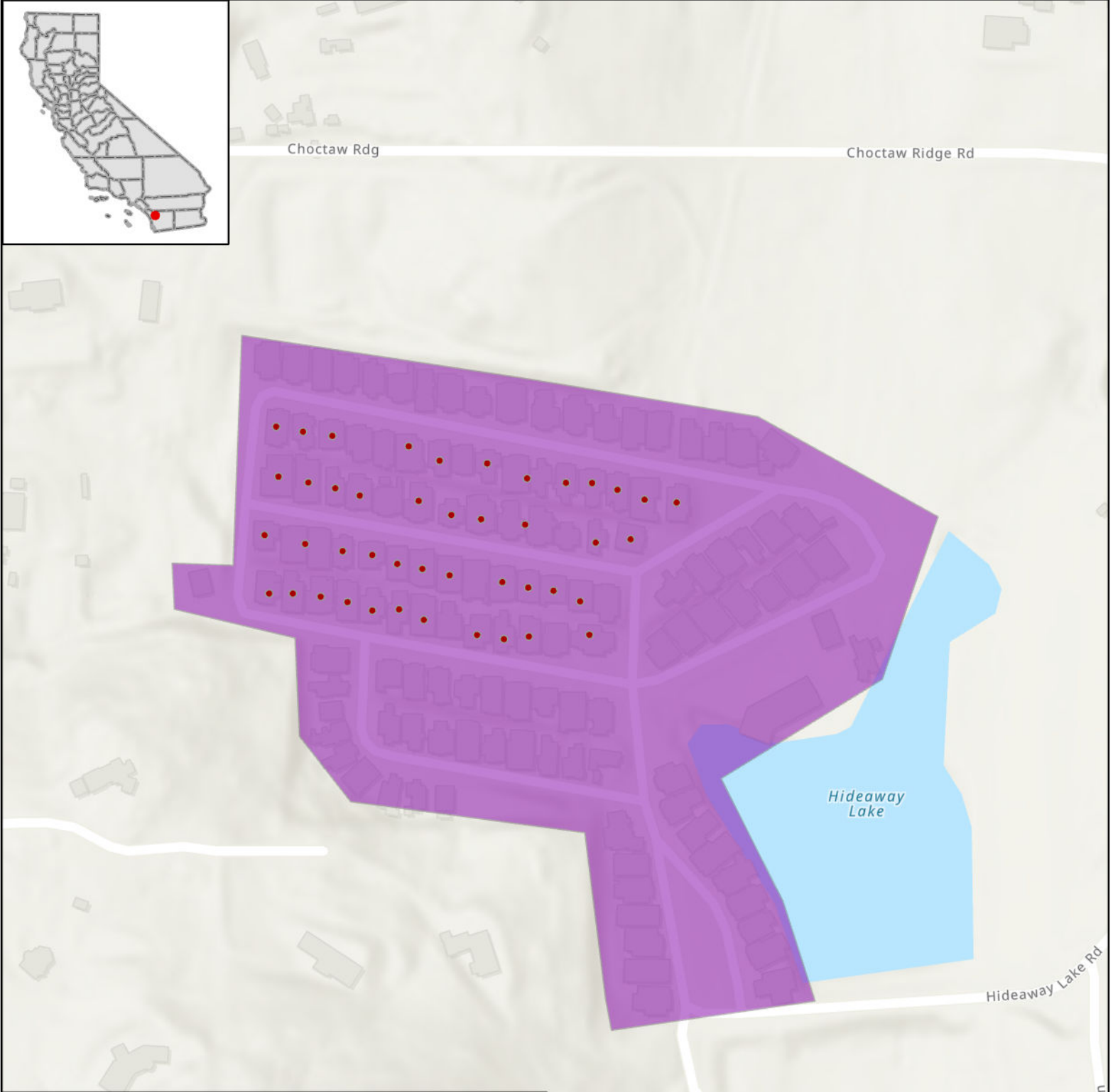
Sources: Esri, Airbus DS, USGS, NGA, NASA, CGIAR, N Robinson, NCEAS, NLS, OS, NMA, Geodatastyrelsen, Rijkswaterstaat, GSA, Geoland, FEMA, Intermap and the GIS user community, Esri Community Maps Contributors, City of San Jose, County of Santa Clara, California State Parks, © OpenStreetMap, Microsoft, Esri, HERE, Garmin, SafeGraph, GeoTechnologies, Inc, METI/NASA, USGS, Bureau of Land Management, EPA, NPS, US Census Bureau, USDA



STATE OF CALIFORNIA

Kwikbit Internet - Proposed Infrastructure Grant Application

Mobile Home Park 1, HideAway Lake Estates, Map 8 of 13 - June 1, 2023



LEGEND

CASF Eligible Locations

- Eligible
- Priority Eligible
- Project Area

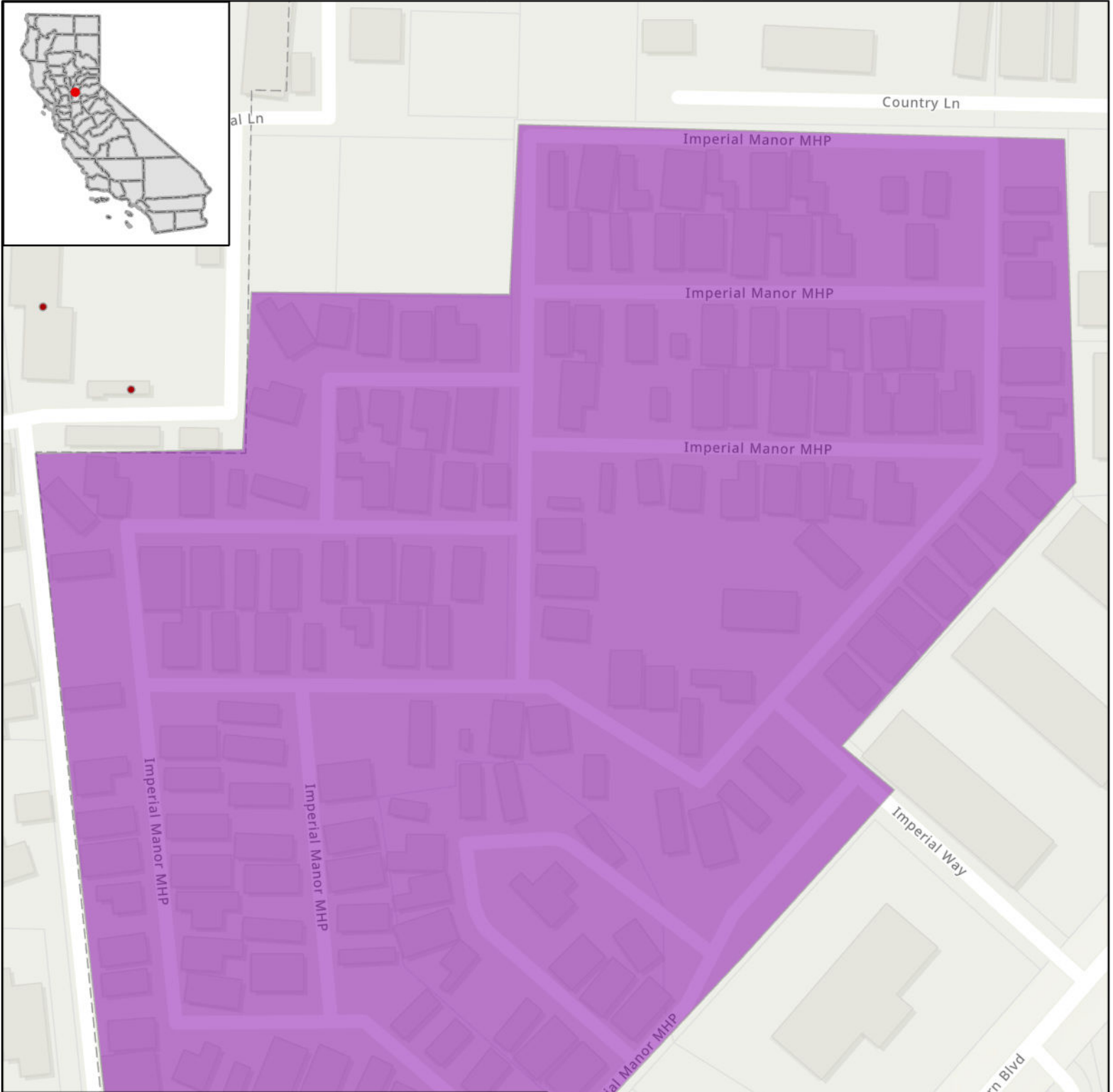
Esri Community Maps Contributors, SanGIS, California State Parks, © OpenStreetMap, Microsoft, Esri, HERE, Garmin, SafeGraph, GeoTechnologies, Inc, METI/NASA, USGS, Bureau of Land Management, EPA, NPS, US Census Bureau, USDA, Sources: Esri, Airbus DS, USGS, NGA, NASA, CGIAR, N Robinson, NCEAS, NLS, OS, NMA, Geodatastyrelsen, Rijkswaterstaat, GSA, Geoland, FEMA, Intermap and the GIS user community



STATE OF CALIFORNIA

Kwikbit Internet - Proposed Infrastructure Grant Application

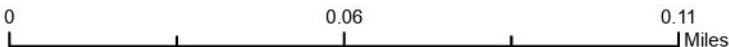
Mobile Home Park 1, Imperial Manor, Map 9 of 13 - June 1, 2023



LEGEND

CASF Eligible Locations

- Eligible
- Priority Eligible
- Project Area



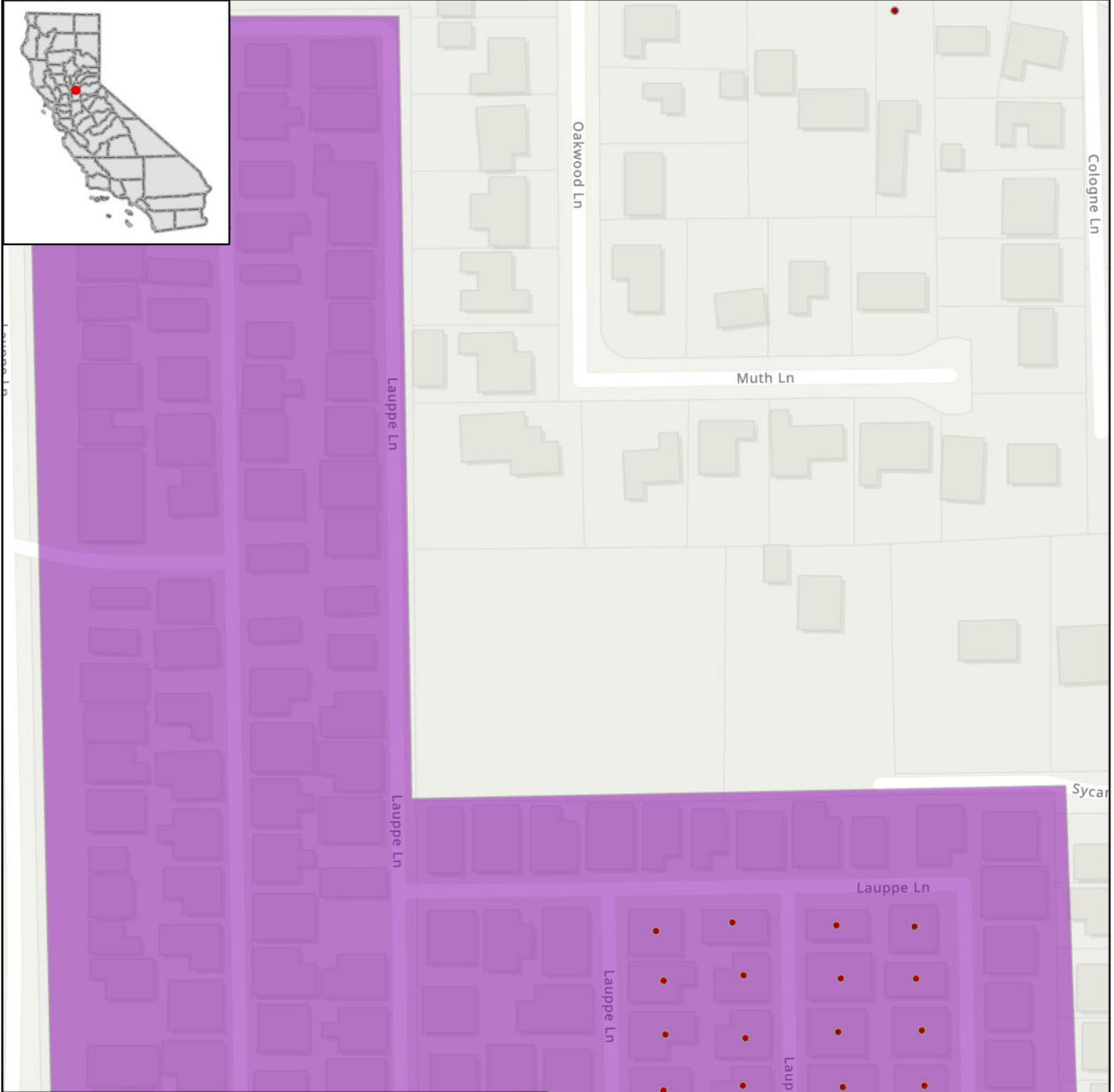
Sources: Esri, Airbus DS, USGS, NGA, NASA, CGIAR, N Robinson, NCEAS, NLS, OS, NMA, Geodastystyrelsen, Rijkswaterstaat, GSA, Geoland, FEMA, Intermap and the GIS user community, Esri Community Maps Contributors, County of Sacramento, California State Parks, © OpenStreetMap, Microsoft, Esri, HERE, Garmin, SafeGraph, GeoTechnologies, Inc, METI/NASA, USGS, Bureau of Land Management, EPA, NPS, US Census Bureau, USDA



STATE OF CALIFORNIA

Kwikbit Internet - Proposed Infrastructure Grant Application

Mobile Home Park 1, Oak Grove Estates, Map 10 of 13 - June 1, 2023



LEGEND

CASF Eligible Locations

- **Eligible**
- **Priority Eligible**
- Project Area**

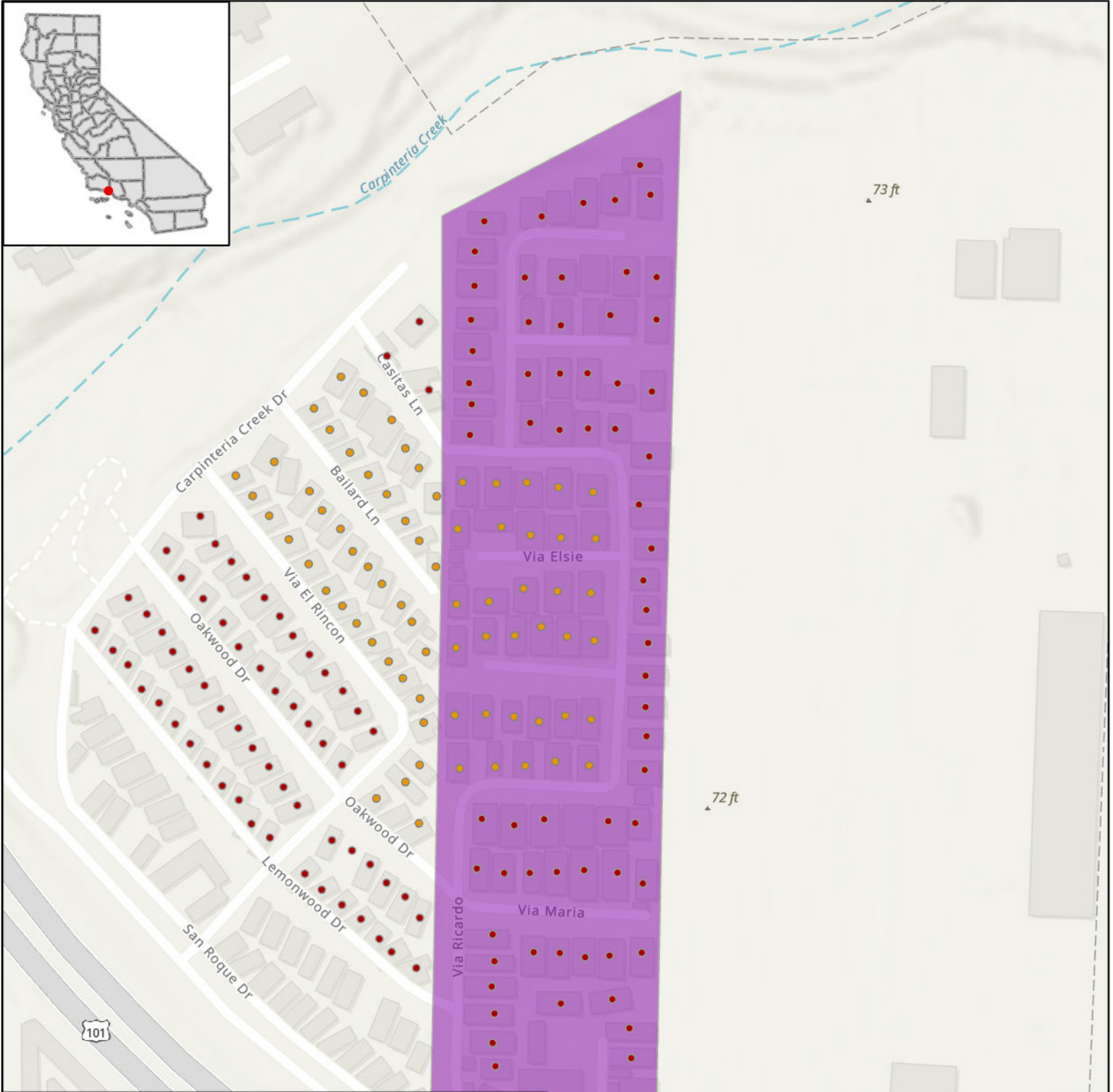
Sources: Esri, Airbus DS, USGS, NGA, NASA, CGIAR, N Robinson, NCEAS, NLS, OS, NMA, Geodatastyrelsen, Rijkswaterstaat, GSA, Geoland, FEMA, Intermap and the GIS user community, Esri Community Maps Contributors, County of Sacramento, California State Parks, © OpenStreetMap, Microsoft, Esri, HERE, Garmin, SafeGraph, GeoTechnologies, Inc. METI/NASA, USGS, Bureau of Land Management, EPA, NPS, US Census Bureau, USDA



STATE OF CALIFORNIA

Kwikbit Internet - Proposed Infrastructure Grant Application

Mobile Home Park 1, Rancho Granada, Map 11 of 13 - June 1, 2023



LEGEND

CASF Eligible Locations

- Eligible
- Priority Eligible
- Project Area

0 0.09 0.17 Miles

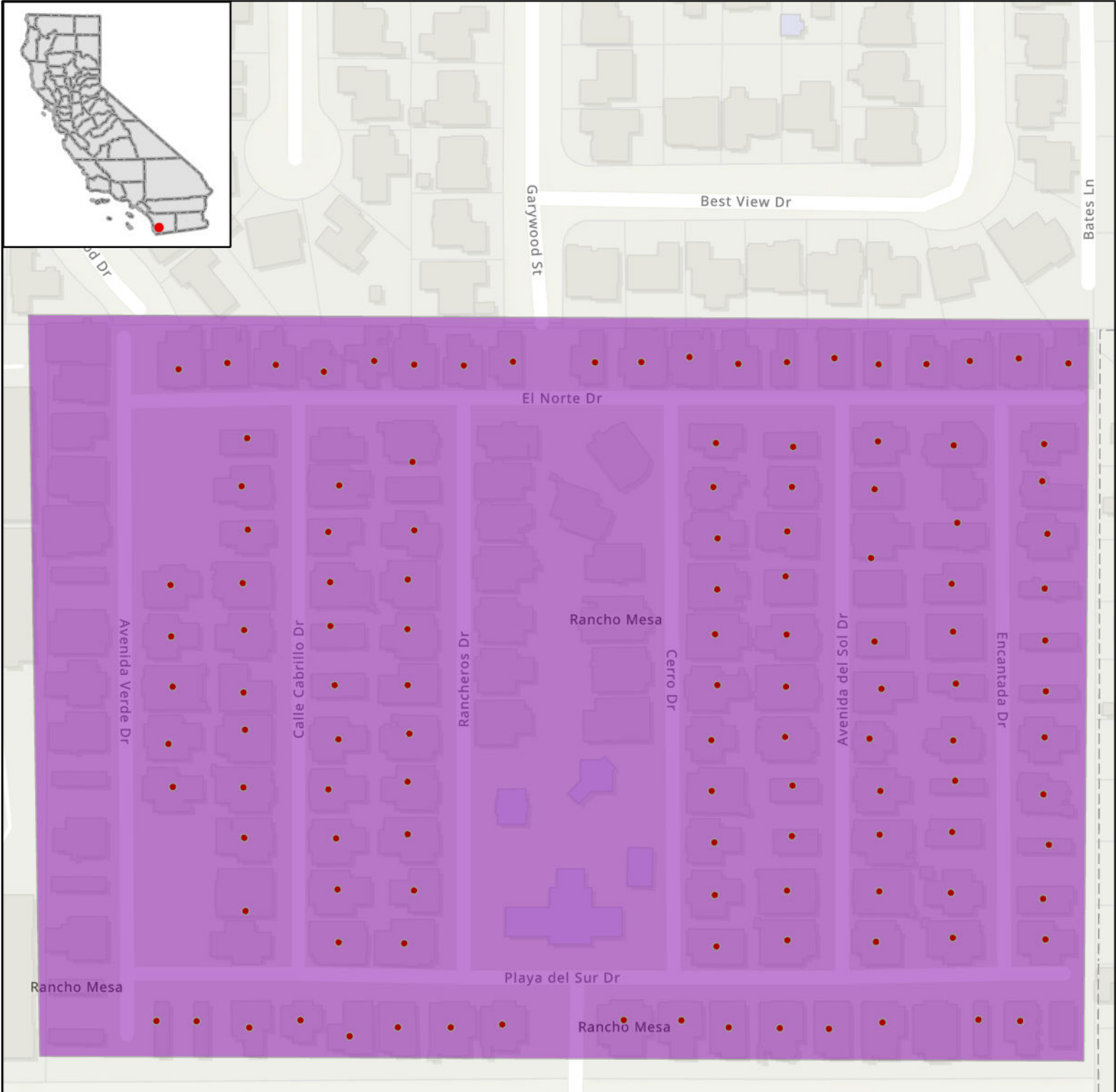
Esri Community Maps Contributors, California State Parks, © OpenStreetMap, Microsoft, Esri, HERE, Garmin, SafeGraph, GeoTechnologies, Inc, METI/NASA, USGS, Bureau of Land Management, EPA, NPS, US Census Bureau, USDA, Sources: Esri, Airbus DS, USGS, NGA, NASA, CGIAR, N Robinson, NCEAS, NLS, OS, NMA, Geodatastyrelsen, Rijkswaterstaat, GSA, Geoland, FEMA, Intermap and the GIS user community



STATE OF CALIFORNIA

Kwikbit Internet - Proposed Infrastructure Grant Application


Mobile Home Park 1, Rancho Mesa, Map 12 of 13 - June 1, 2023



LEGEND

CASF Eligible Locations

- Eligible
- Priority Eligible
- Project Area



0 0.06 0.11

Miles

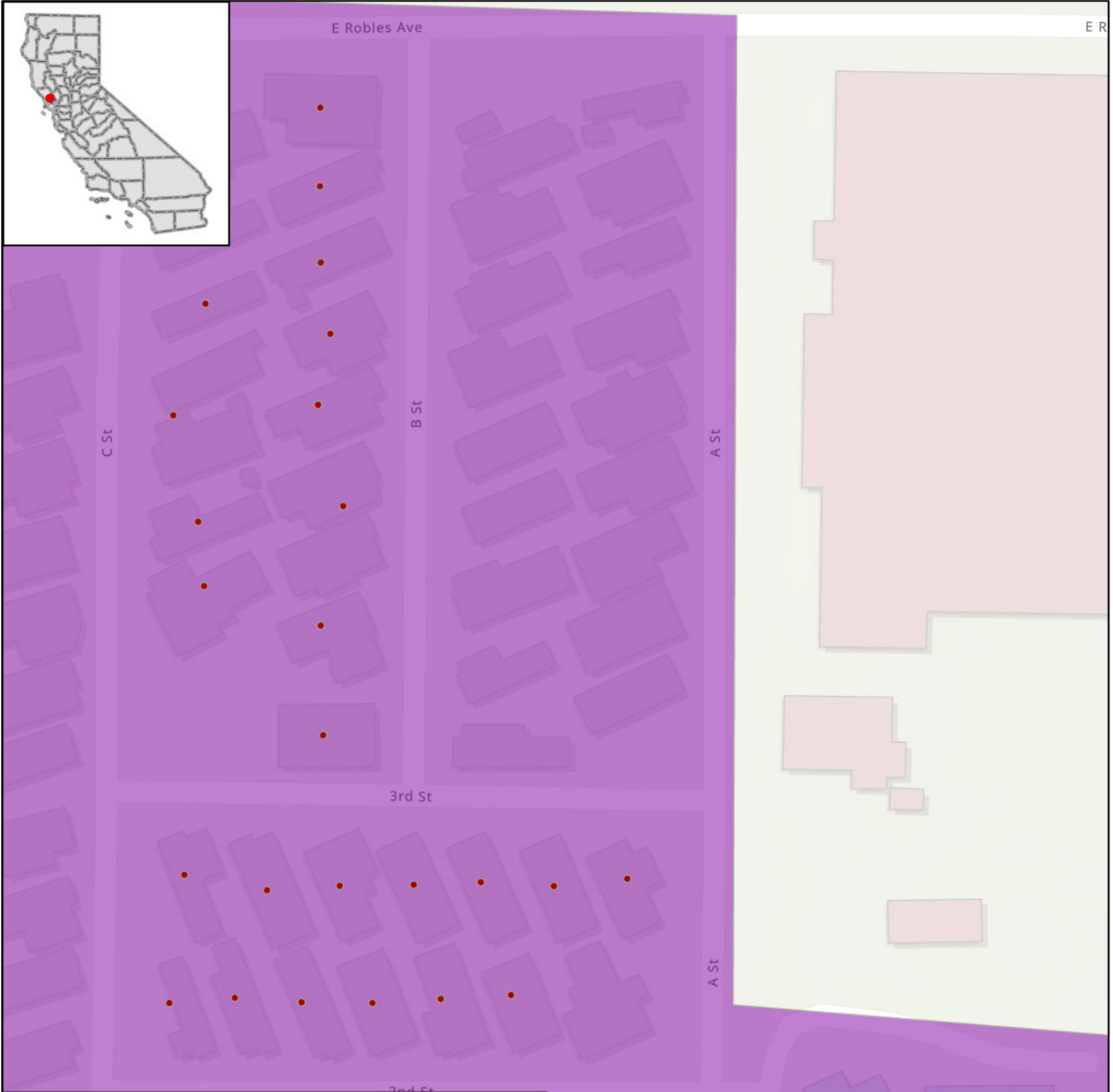
Esri Community Maps Contributors, City of El Cajon, SanGIS, California State Parks, © OpenStreetMap, Microsoft, Esri, HERE, Garmin, SafeGraph, GeoTechnologies, Inc, METI/NASA, USGS, Bureau of Land Management, EPA, NPS, US Census Bureau, USDA, Sources: Esri, Airbus DS, USGS, NGA, NASA, CGIAR, N Robinson, NCEAS, NLS, OS, NMA, Geodatastyrelsen, Rijkswaterstaat, GSA, Geoland, FEMA, Intermap and the GIS user community



STATE OF CALIFORNIA

Kwikbit Internet - Proposed Infrastructure Grant Application

Mobile Home Park 1, Rancho Santa Rosa, Map 13 of 13 - June 1, 2023



LEGEND

CASF Eligible Locations

- Eligible
- Priority Eligible
- Project Area

0 0.03 0.05
Miles

Esri Community Maps Contributors, City of Santa Rosa, Sonoma County, California State Parks, ©OpenStreetMap, Microsoft, Esri, HERE, Garmin, SafeGraph, GeoTechnologies, Inc, METI/NASA, USGS, Bureau of Land Management, EPA, NPS, US Census Bureau, USDA, Sources: Esri, Airbus DS, USGS, NGA, NASA, CGIAR, N Robinson, NCEAS, NLS, OS, NMA, Geodatastyrelsen, Rijkswaterstaat, GSA, Geoland, FEMA, Intermap and the GIS user community