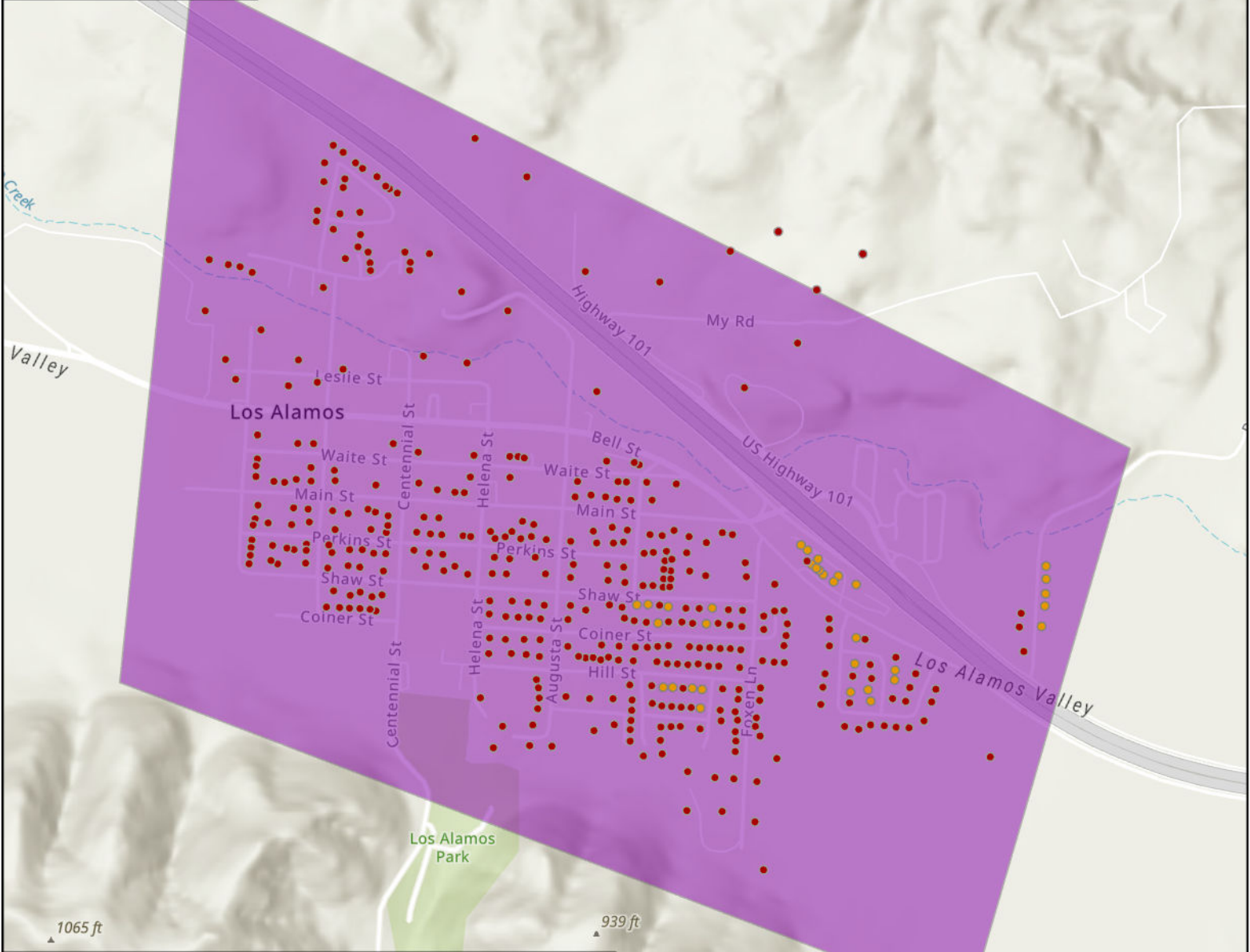




# STATE OF CALIFORNIA

## Frontier - Proposed Infrastructure Grant Application

### Santa Barbara - June 1, 2023



**LEGEND**

- Eligible
- Priority Eligible
- Project Area

Esri, NASA, NGA, USGS, FEMA, Esri Community Maps Contributors, California State Parks, Esri, HERE, Garmin, SafeGraph, GeoTechnologies, Inc, METI/NASA, USGS, Bureau of Land Management, EPA, NPS, US Census Bureau, USDA