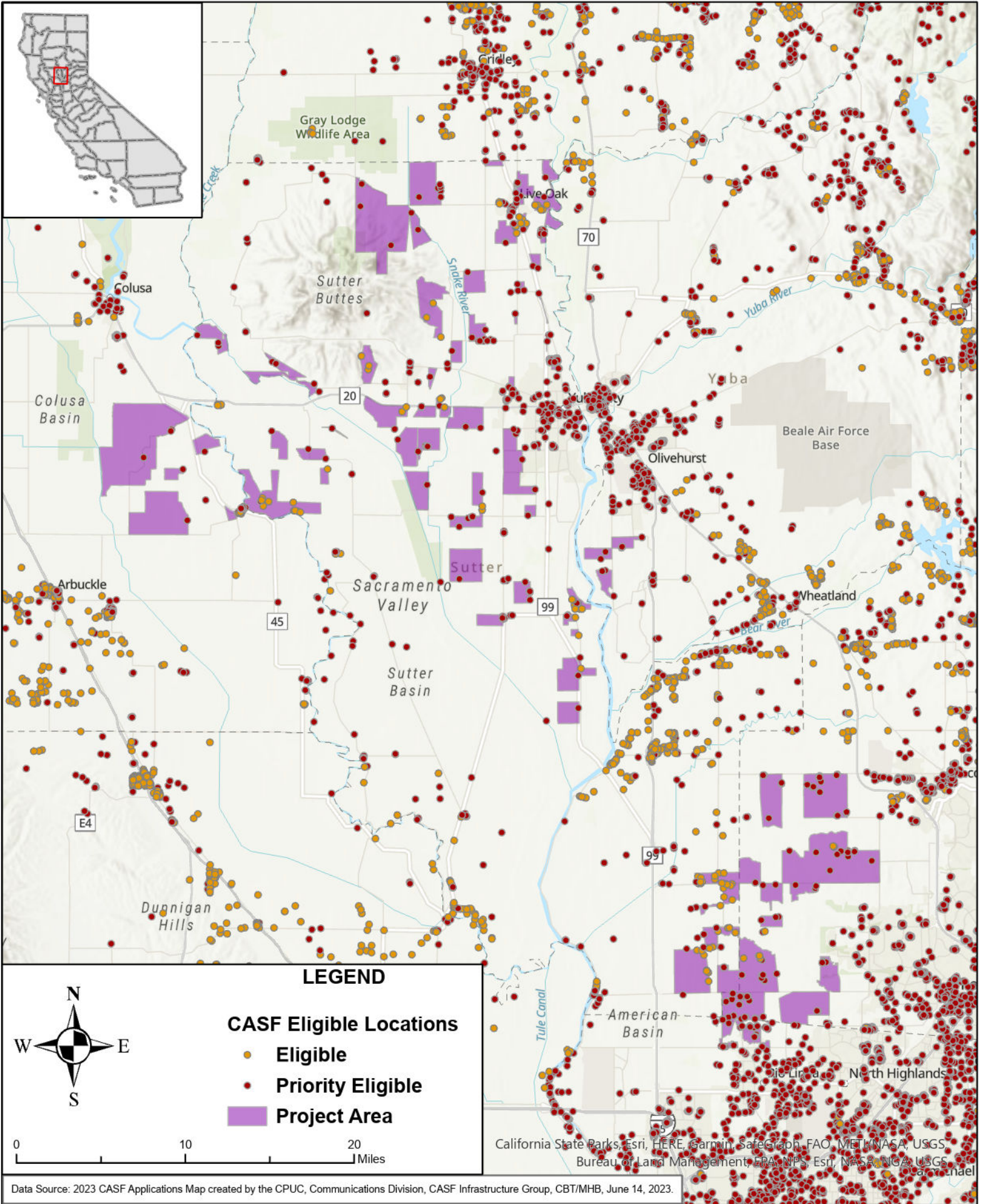




# STATE OF CALIFORNIA

## Digital Path - Proposed Infrastructure Grant Application

### Sutter Bypass - June 1, 2023



#### LEGEND

#### CASF Eligible Locations

- Eligible
- Priority Eligible
- Project Area



0 10 20 Miles

California State Parks, Esri, HERE, Garmin, SafeGraph, FAO, METI/NASA, USGS, Bureau of Land Management, EPA/NPS, Esri, NASA/NGA, USGS, and other data sources.