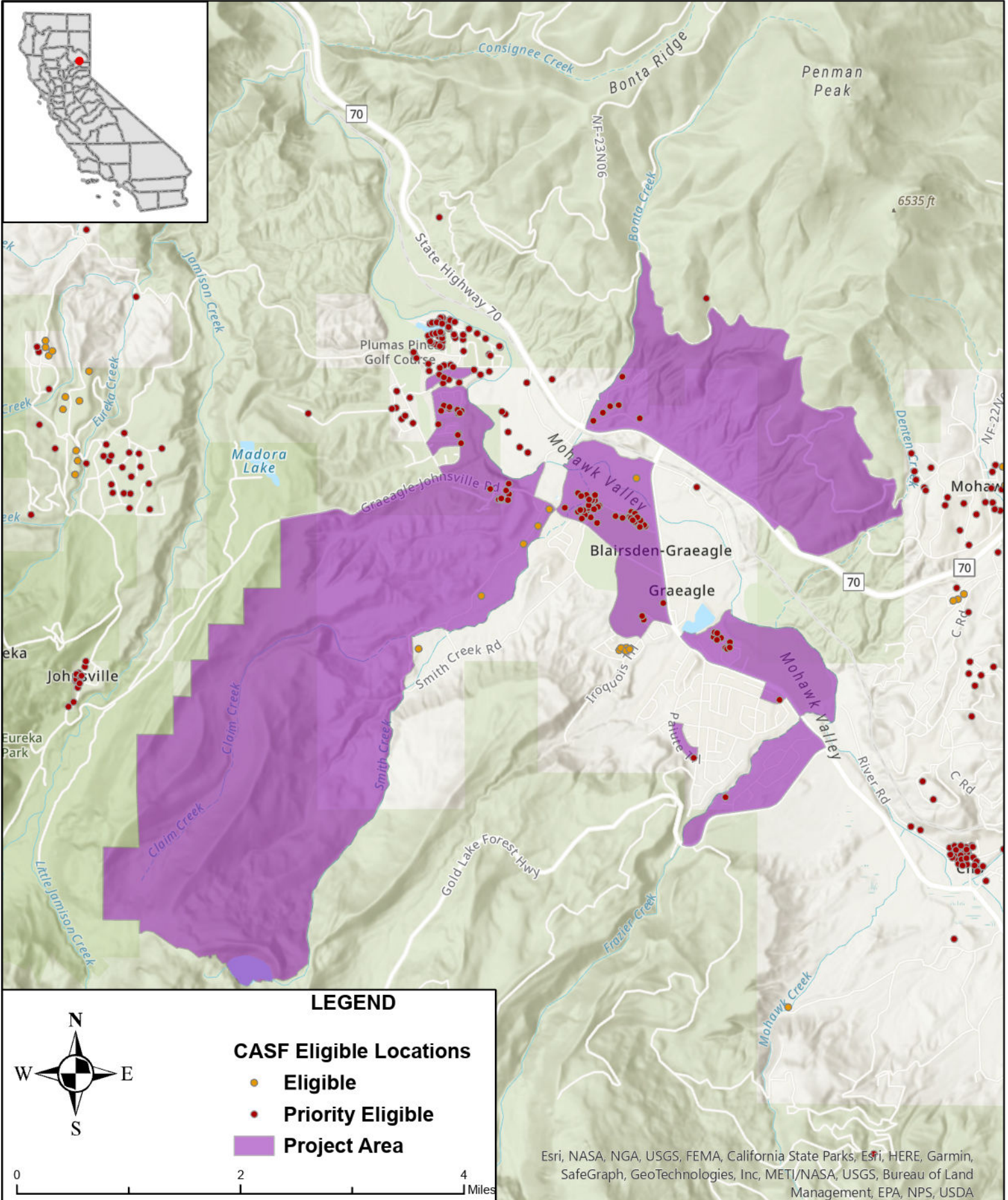




# STATE OF CALIFORNIA

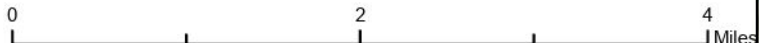
## Digital Path - Proposed Infrastructure Grant Application

### Mohawk - June 1, 2023



#### LEGEND

- CASF Eligible Locations**
- Eligible
  - Priority Eligible
  - Project Area



Esri, NASA, NGA, USGS, FEMA, California State Parks, Esri, HERE, Garmin, SafeGraph, GeoTechnologies, Inc, METI/NASA, USGS, Bureau of Land Management, EPA, NPS, USDA