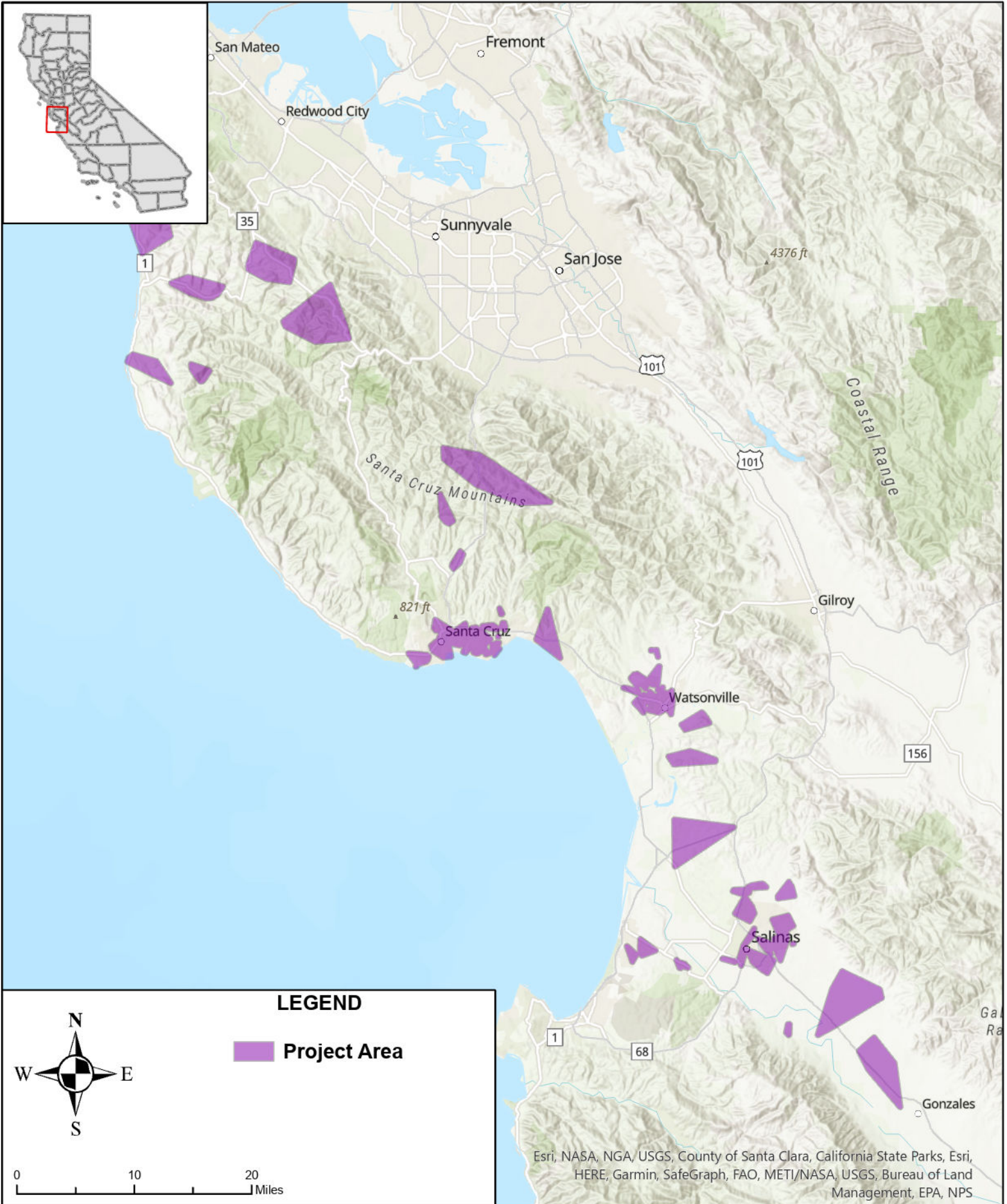




# STATE OF CALIFORNIA

## Cruzio Media - Proposed Infrastructure Grant Application

### Summits to the Sea, Map 1 of 13 - June 1, 2023

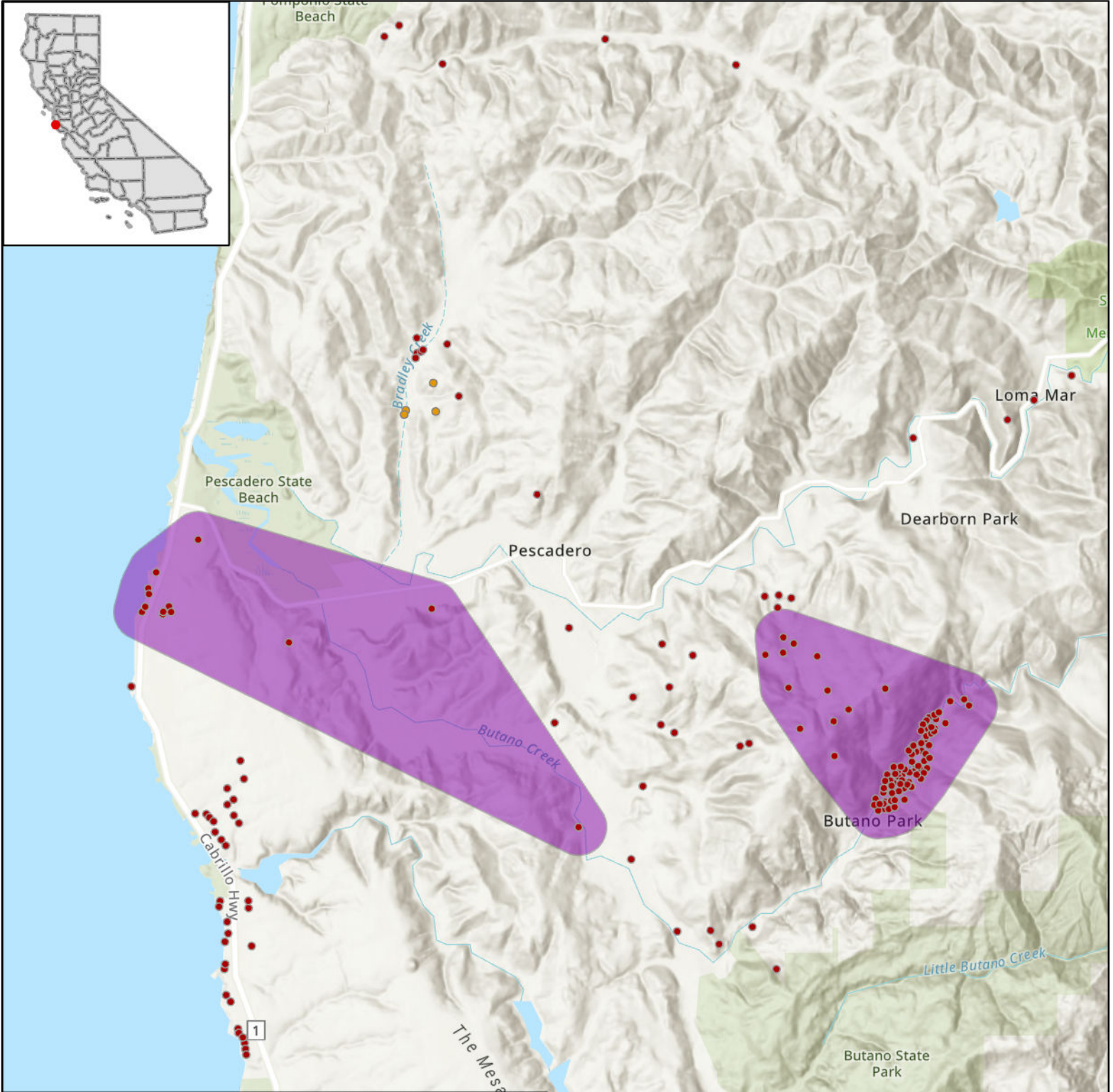




# STATE OF CALIFORNIA

## Cruzio Media - Proposed Infrastructure Grant Application

### Summits to the Sea, Butano Park, Map 2 of 13 - June 1, 2023



**LEGEND**

- Eligible
- Priority Eligible
- Project Area

0 2 4 Miles

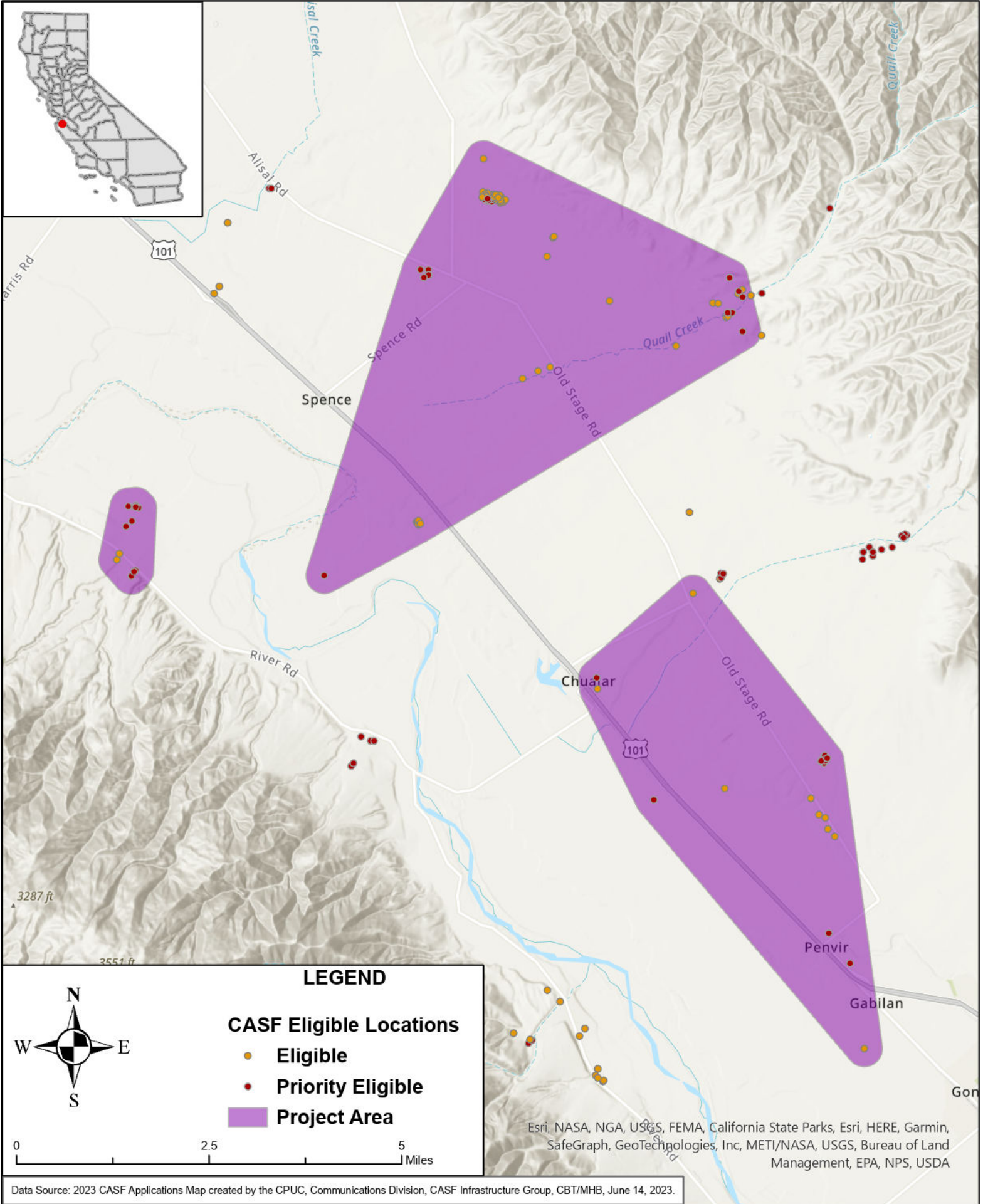
Esri, NASA, NGA, USGS, FEMA, California State Parks, Esri, HERE, Garmin, SafeGraph, GeoTechnologies, Inc, METI/NASA, USGS, Bureau of Land Management, EPA, NPS, USDA



# STATE OF CALIFORNIA

## Cruzio Media - Proposed Infrastructure Grant Application

### Summits to the Sea, Chualar, Map 3 of 13 - June 1, 2023



#### LEGEND

- CASF Eligible Locations**
- Eligible
  - Priority Eligible
  - Project Area

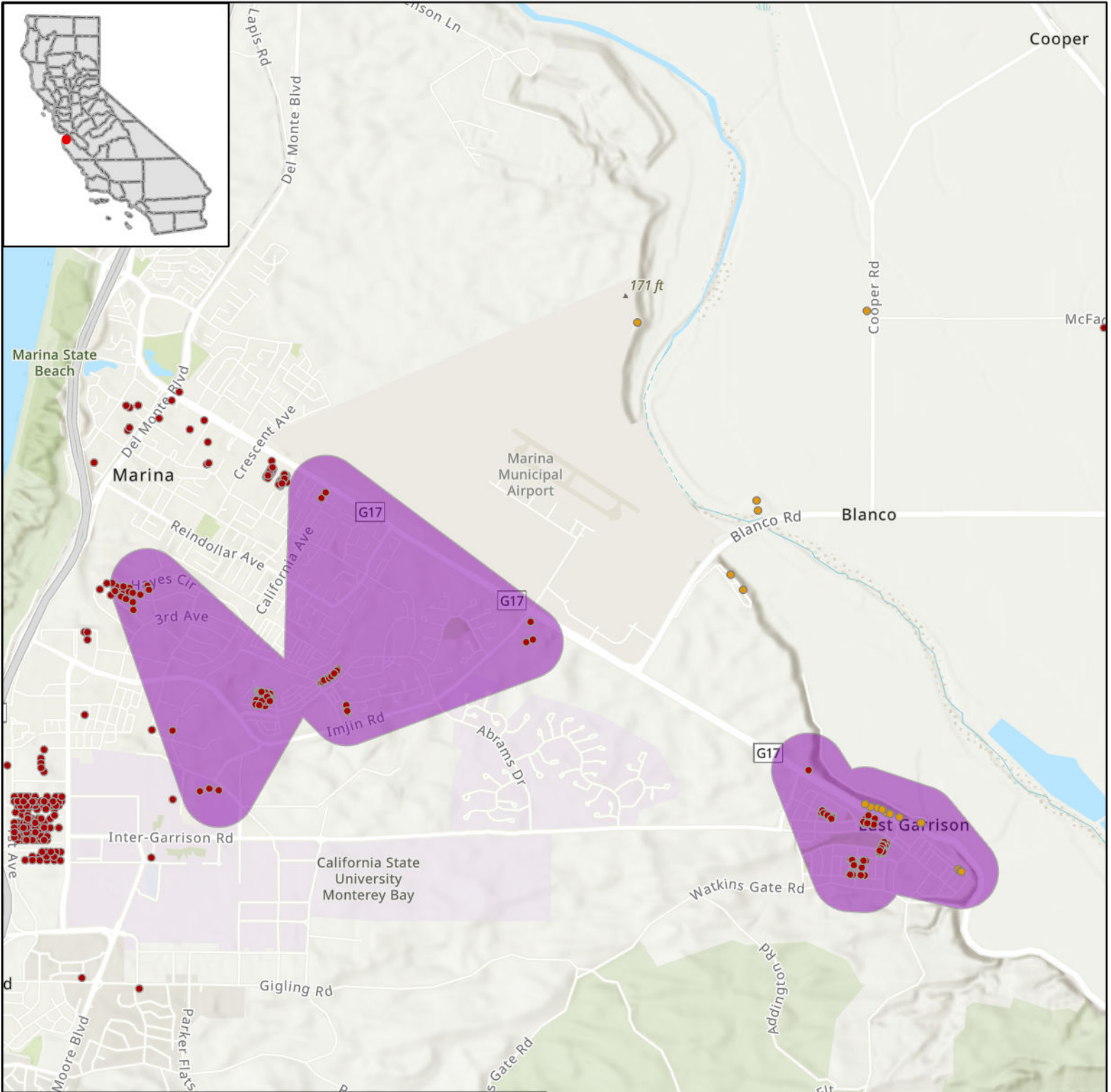
Esri, NASA, NGA, USGS, FEMA, California State Parks, Esri, HERE, Garmin, SafeGraph, GeoTechnologies, Inc, METI/NASA, USGS, Bureau of Land Management, EPA, NPS, USDA



# STATE OF CALIFORNIA

## Cruzio Media - Proposed Infrastructure Grant Application

### Summits to the Sea, East Garrison, Map 4 of 13 - June 1, 2023



**LEGEND**

**CASF Eligible Locations**

- Eligible
- Priority Eligible
- Project Area

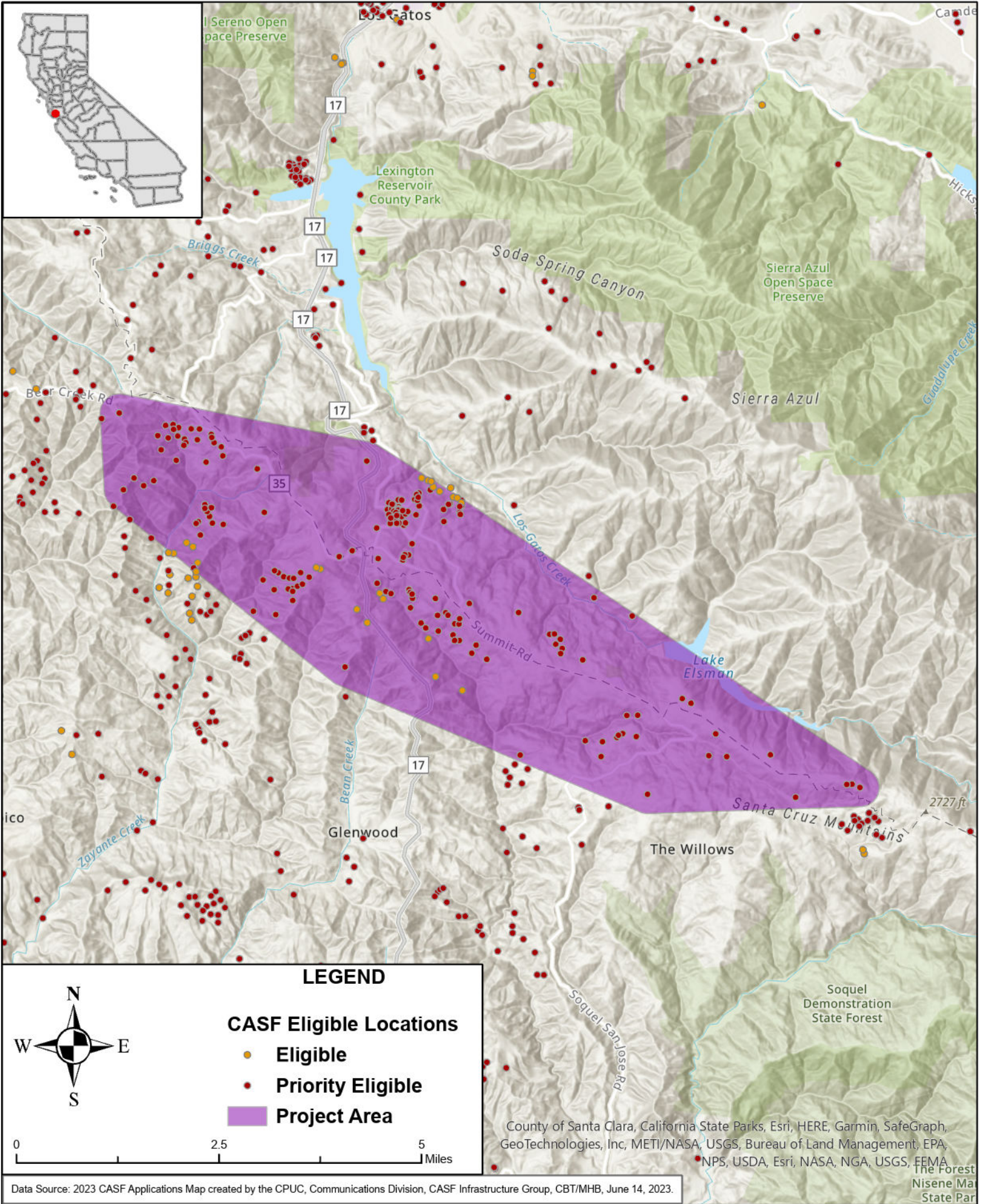
Esri, NASA, NGA, USGS, FEMA, CSU Monterey Bay, California State Parks, Esri, HERE, Garmin, SafeGraph, GeoTechnologies, Inc, METI/NASA, USGS, Bureau of Land Management, EPA, NPS, USDA



# STATE OF CALIFORNIA

## Cruzio Media - Proposed Infrastructure Grant Application

### Summits to the Sea, Lake Elsman, Map 5 of 13 - June 1, 2023



#### LEGEND

#### CASF Eligible Locations

- Eligible
- Priority Eligible
- Project Area



0 2.5 5 Miles

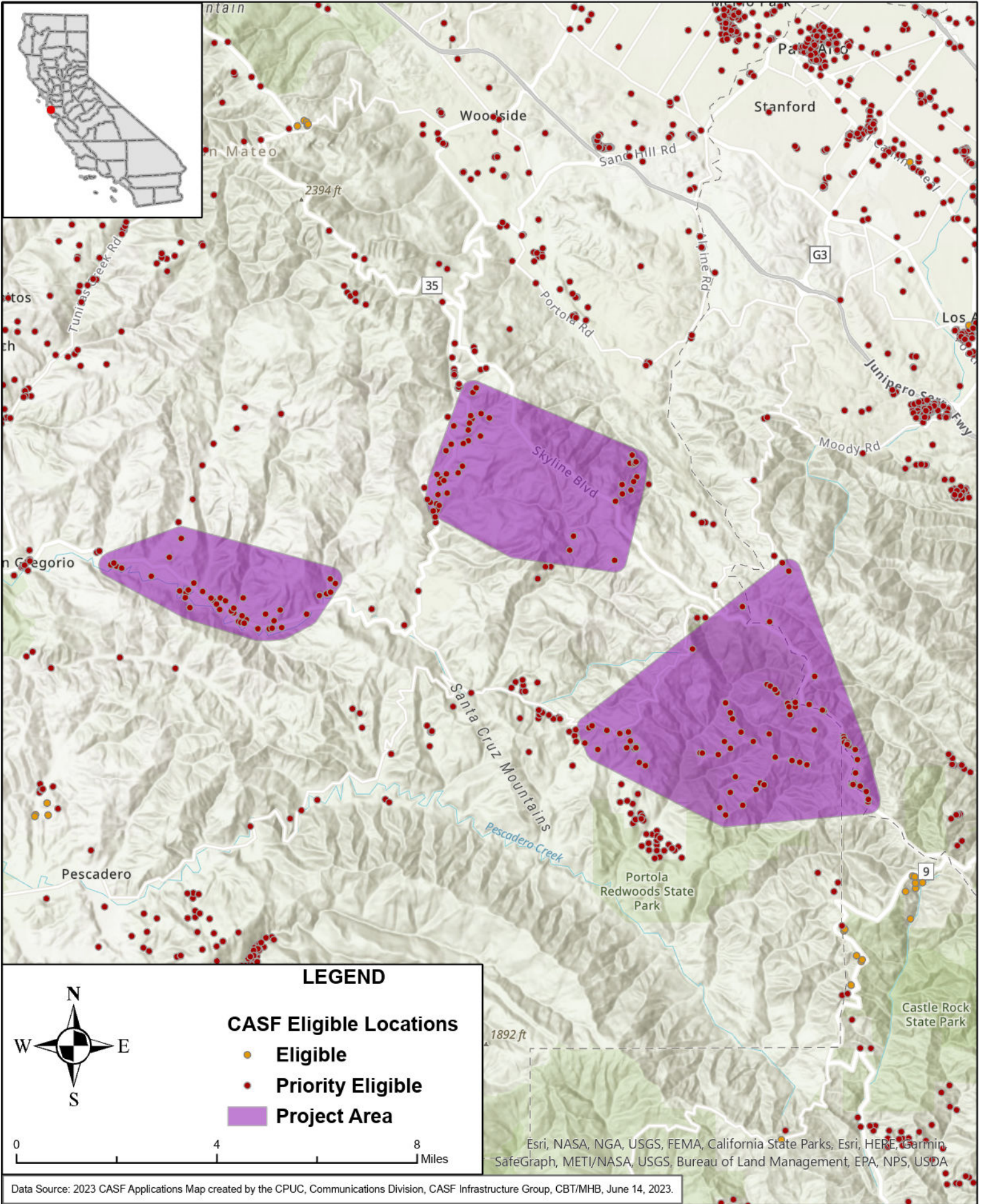
County of Santa Clara, California State Parks, Esri, HERE, Garmin, SafeGraph, GeoTechnologies, Inc, METI/NASA, USGS, Bureau of Land Management, EPA, NPS, USDA, Esri, NASA, NGA, USGS, FEMA



# STATE OF CALIFORNIA

## Cruzio Media - Proposed Infrastructure Grant Application

### Summits to the Sea, Langley Hill, Map 6 of 13 - June 1, 2023

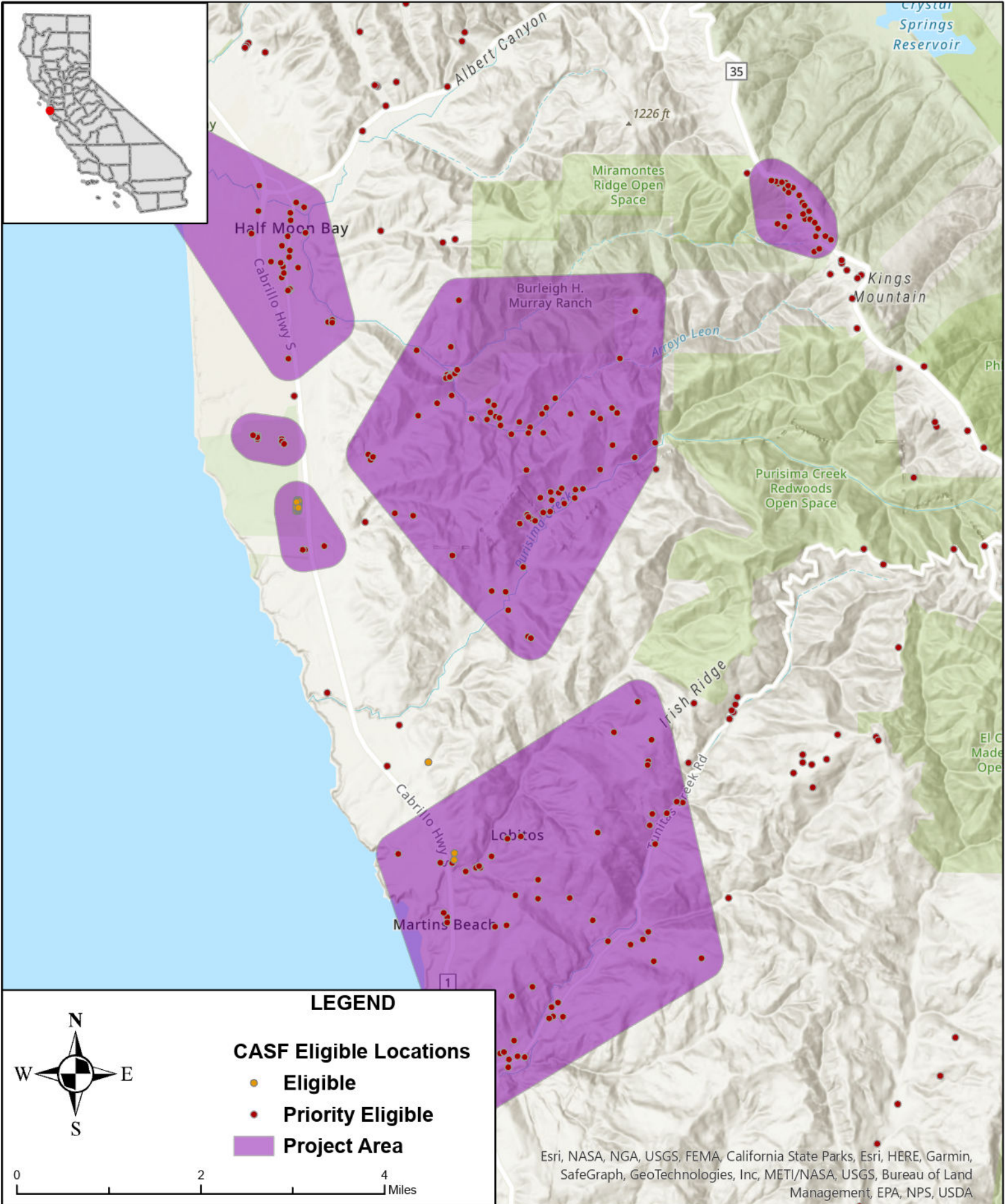




# STATE OF CALIFORNIA

## Cruzio Media - Proposed Infrastructure Grant Application

### Summits to the Sea, Martins Beach, Map 7 of 13 - June 1, 2023

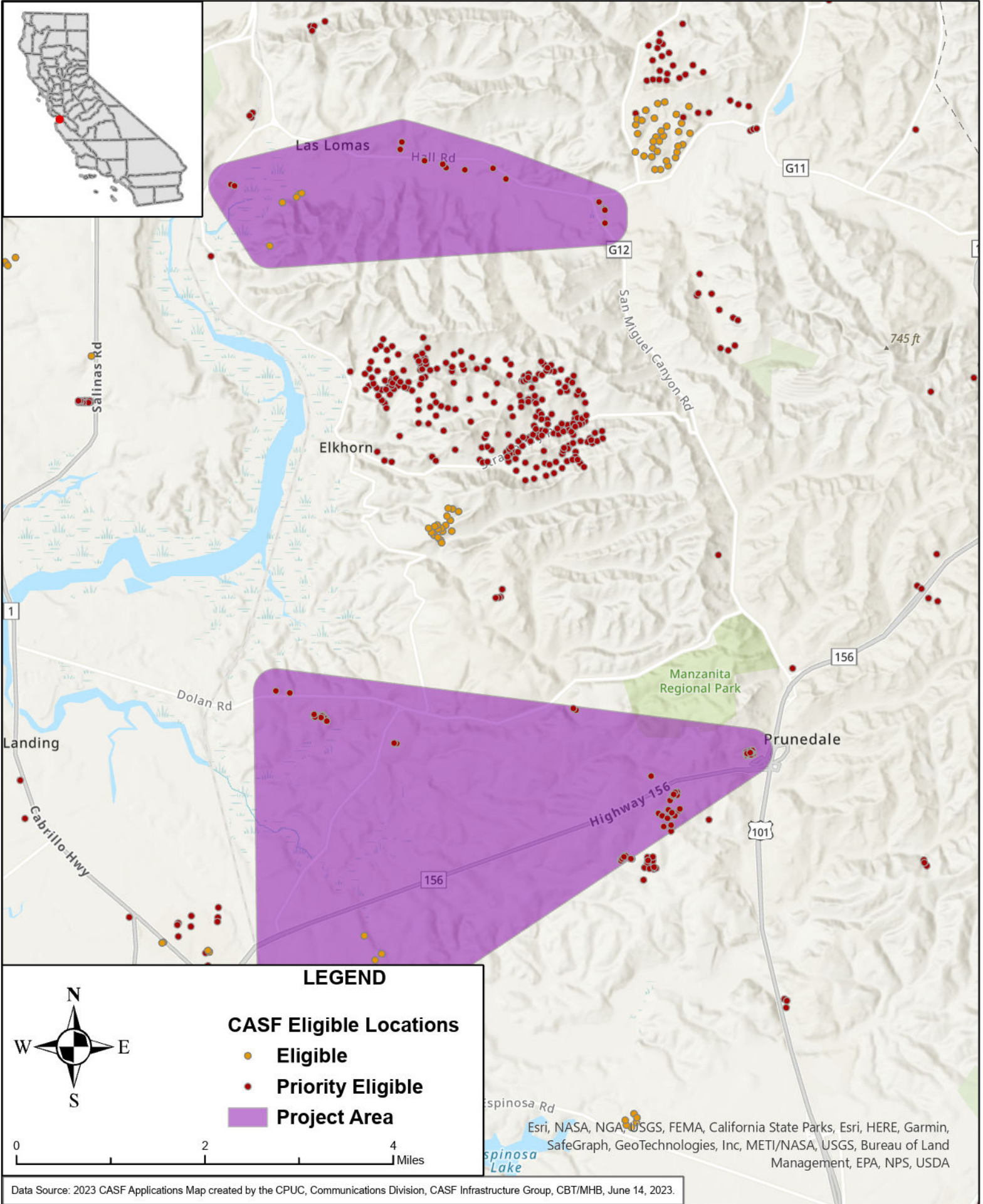




# STATE OF CALIFORNIA

## Cruzio Media - Proposed Infrastructure Grant Application

### Summits to the Sea, Prunedale, Map 8 of 13 - June 1, 2023



**LEGEND**

- Eligible
- Priority Eligible
- Project Area

0 2 4 Miles

Esri, NASA, NGA, USGS, FEMA, California State Parks, Esri, HERE, Garmin, SafeGraph, GeoTechnologies, Inc, METI/NASA, USGS, Bureau of Land Management, EPA, NPS, USDA

Data Source: 2023 CASF Applications Map created by the CPUC, Communications Division, CASF Infrastructure Group, CBT/MHB, June 14, 2023.

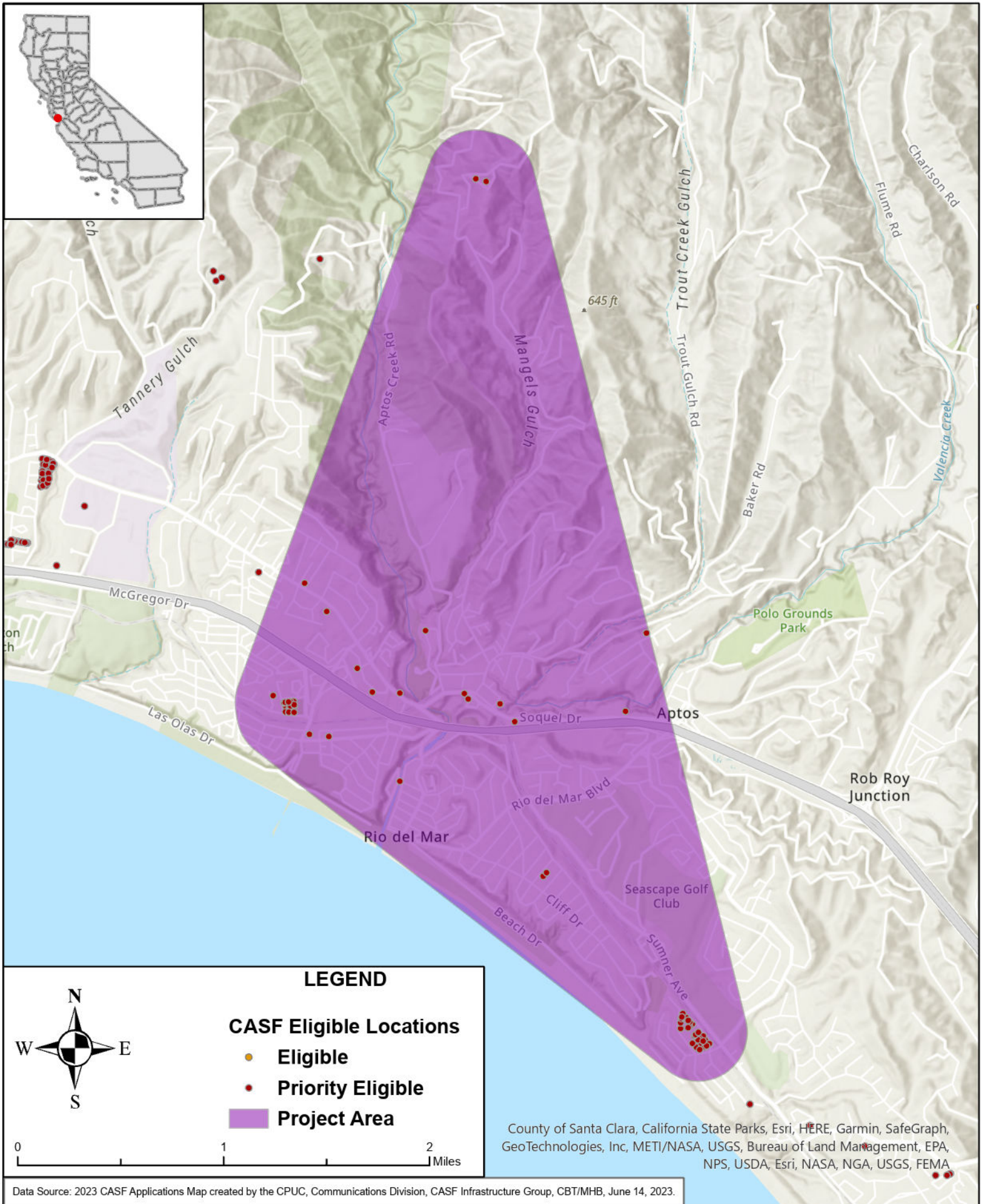




# STATE OF CALIFORNIA

## Cruzio Media - Proposed Infrastructure Grant Application

### Summits to the Sea, Rio del Mar, Map 9 of 13 - June 1, 2023



**LEGEND**

**CASF Eligible Locations**

- Eligible
- Priority Eligible
- Project Area

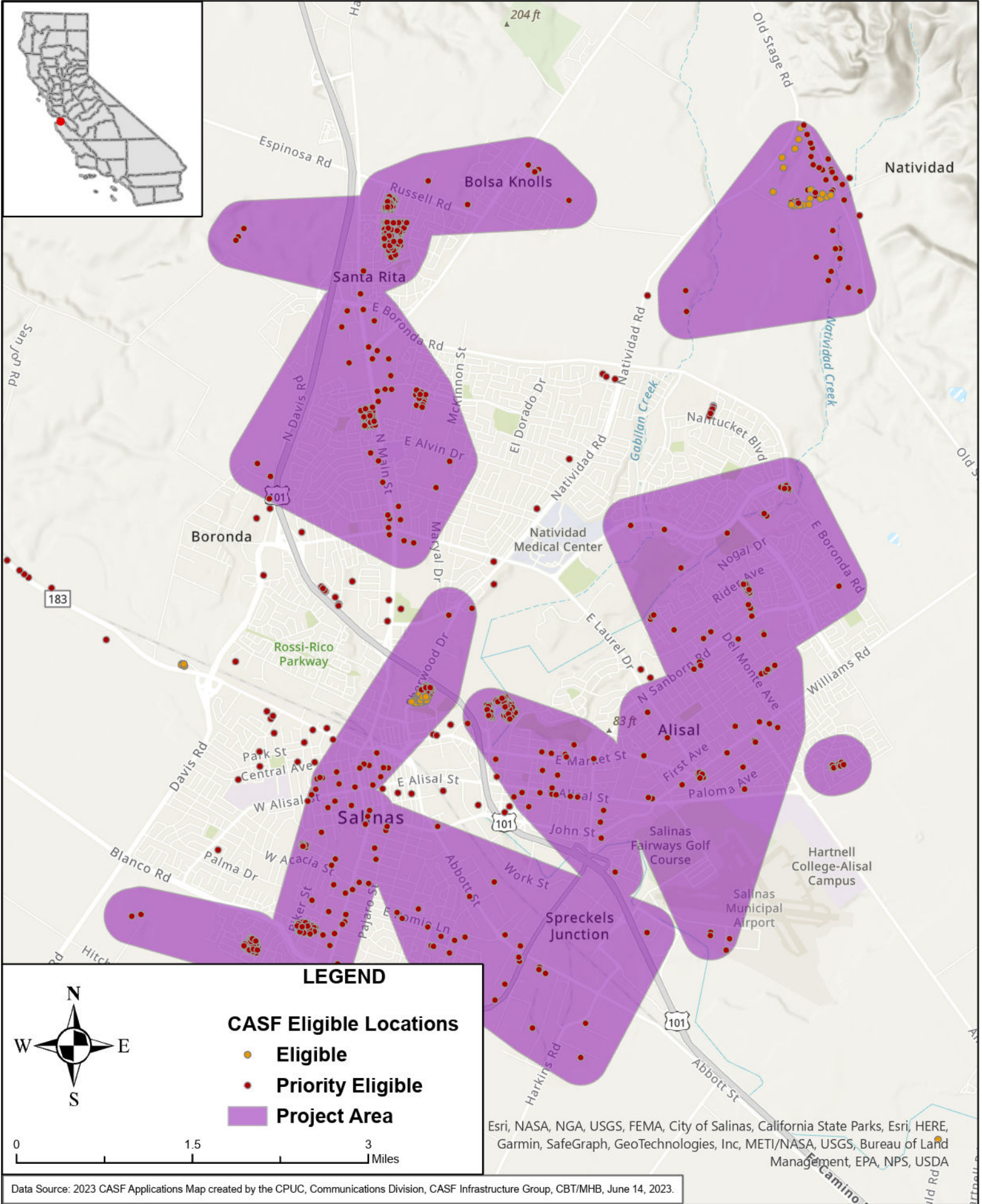
County of Santa Clara, California State Parks, Esri, HERE, Garmin, SafeGraph, GeoTechnologies, Inc, METI/NASA, USGS, Bureau of Land Management, EPA, NPS, USDA, Esri, NASA, NGA, USGS, FEMA



# STATE OF CALIFORNIA

## Cruzio Media - Proposed Infrastructure Grant Application

### Summits to the Sea, Salinas, Map 10 of 13 - June 1, 2023

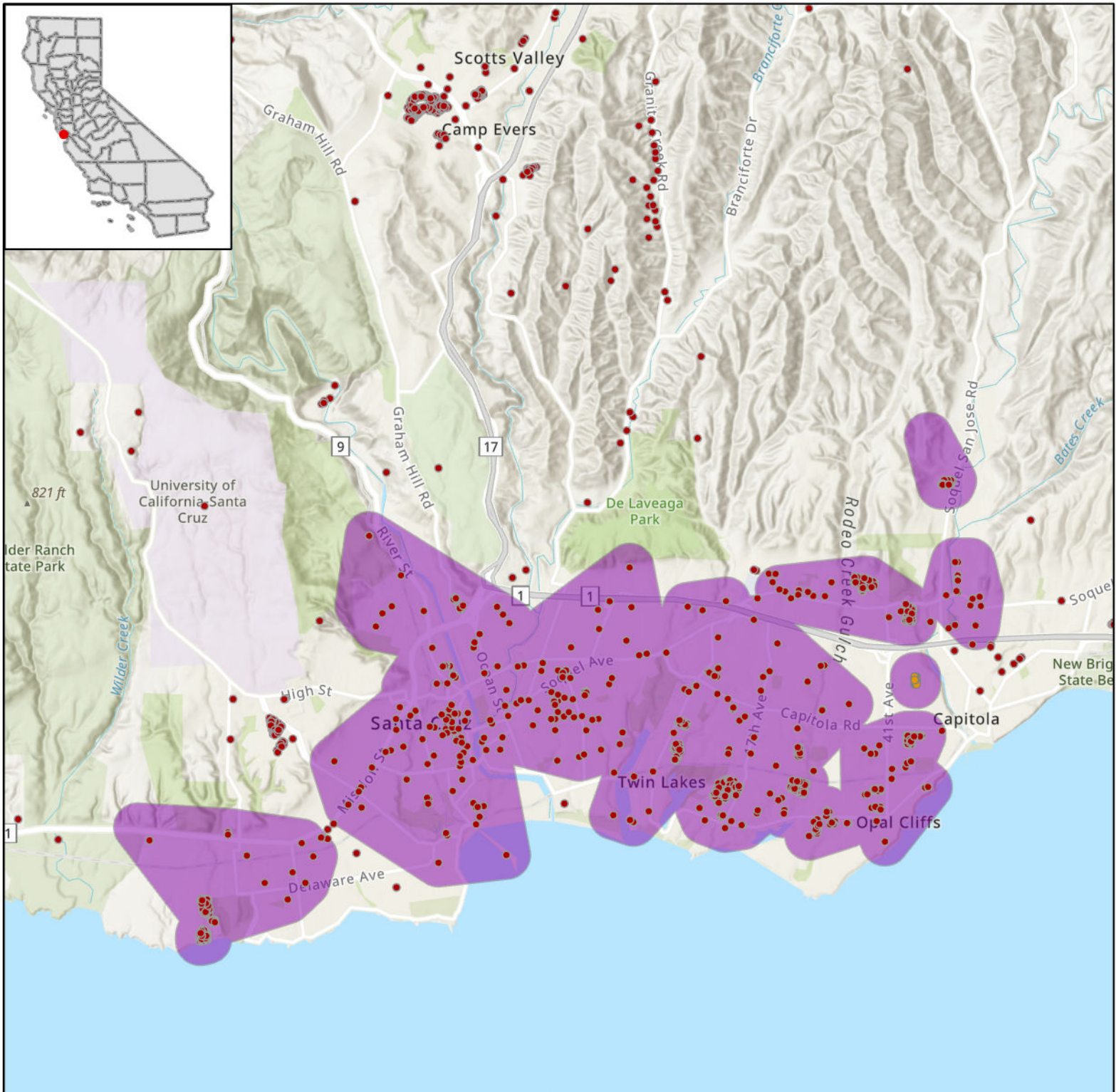




# STATE OF CALIFORNIA

## Cruzio Media - Proposed Infrastructure Grant Application

### Summits to the Sea, Santa Cruz, Map 11 of 13 - June 1, 2023



**LEGEND**

**CASF Eligible Locations**

- Eligible
- Priority Eligible
- Project Area

0                      2                      4  
Miles

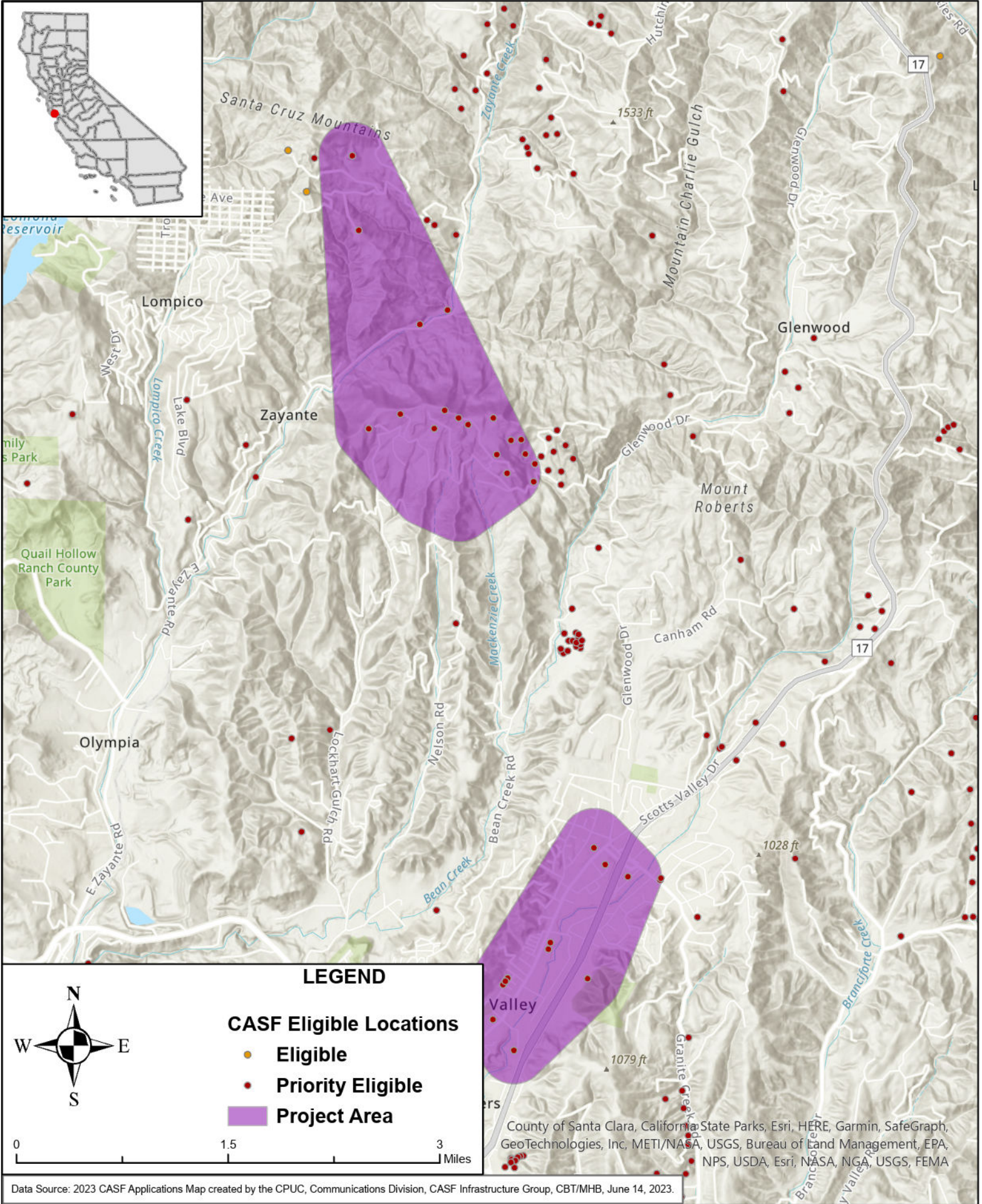
County of Santa Clara, California State Parks, Esri, HERE, Garmin, SafeGraph, GeoTechnologies, Inc, METI/NASA, USGS, Bureau of Land Management, EPA, NPS, USDA, Esri, NASA, NGA, USGS, FEMA



# STATE OF CALIFORNIA

## Cruzio Media - Proposed Infrastructure Grant Application

### Summits to the Sea, Scotts Valley, Map 12 of 13 - June 1, 2023

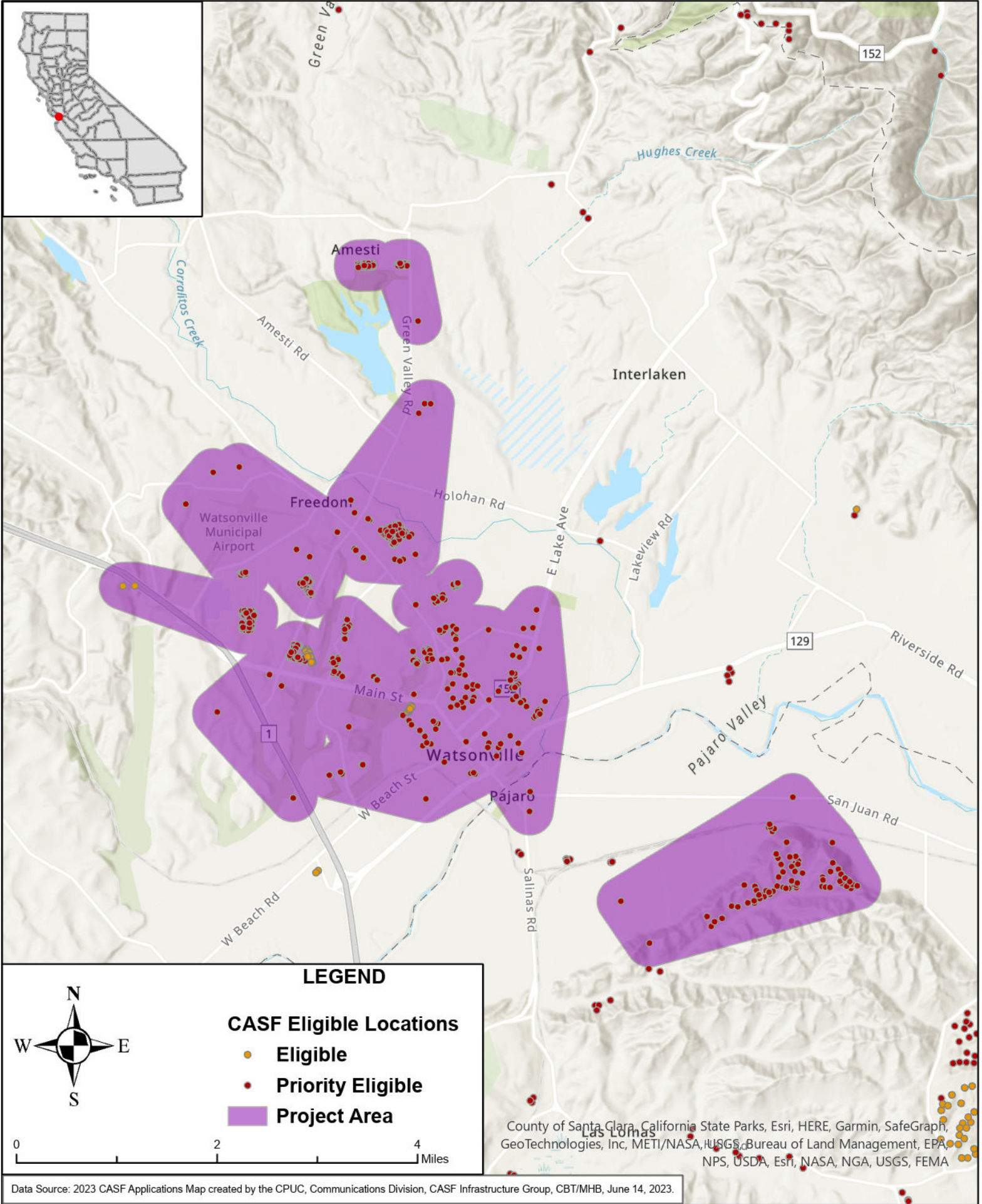




# STATE OF CALIFORNIA

## Cruzio Media - Proposed Infrastructure Grant Application

### Summits to the Sea, Watsonville, Map 13 of 13 - June 1, 2023



#### LEGEND

#### CASF Eligible Locations

- Eligible
- Priority Eligible
- Project Area



0 2 4 Miles

County of Santa Clara, California State Parks, Esri, HERE, Garmin, SafeGraph, GeoTechnologies, Inc, METI/NASA, USGS, Bureau of Land Management, EPA, NPS, USDA, Esri, NASA, NGA, USGS, FEMA